

SEC. 35, 26, & 27, T. 21 S., R. 12 W., W. M.

FILED  
 Date: 3/6/2001 By: JP  
 This survey consists of: 5 SHEETS  
 Map: ST. HWY. 101-006A  
 Narrative: \_\_\_\_\_  
 Corner Rpt: \_\_\_\_\_

DOUGLAS COUNTY  
 SURVEYOR

**SURVEY NARRATIVE**

THE PURPOSE OF THIS SURVEY WAS TO MONUMENT THE NEW RIGHT OF WAY FOR AN OREGON DEPARTMENT OF TRANSPORTATION (ODOT) PROJECT CALLED "SMITH RIVER BRIDGE, STAGE 1 SECTION" LOCATED ON THE OREGON COAST HIGHWAY IN DOUGLAS COUNTY. THE SURVEY WAS PERFORMED BY AN ODOT SURVEY CREW NOVEMBER 28 & 29, 2000. THE ORIGINAL FIELD NOTES ARE ARCHIVED IN SALEM AS BOOK NO. 3741.

THE ORIGINAL HORIZONTAL CONTROL AND RECOVERY MAP FOR THIS PROJECT ARE ON FILE AT THE DOUGLAS COUNTY SURVEYOR'S OFFICE AS MAP NO. M112-48, A-B. CONTROL POINTS NOS. 2 AND 3 WERE RECOVERED AND USED AS THE BASIS OF BEARING FOR THE MONUMENTATION SURVEY. THE NETWORK OPTION WAS USED TO REFERENCE THE NEW RIGHT OF WAY AND CONTROLLING CENTERLINE PER OREGON REVISED STATUTE 209.155 (2)(B). USING POINTS NOS. 2 AND 3 A NEW NETWORK WAS ESTABLISHED THROUGHOUT THE PROJECT LIMITS. THE CENTERLINE SHOWN HERE IS BASED ON ODOT RIGHT OF WAY DRAWING NO. 10B-9-14 (PART 1 OF 2). ALSO REFER TO ODOT R/W FILE NO. 6383 FOR DEED DESCRIPTIONS OF PURCHASED RIGHT OF WAY.

COORDINATES ON THIS DRAWING UTILIZE A LOCAL DATUM PLANE (LDP) WHICH IS RELATIVE TO THE OREGON COORDINATE SYSTEM OF 1983, SOUTH ZONE, WITH RESPECT TO THE LOCAL LATITUDE AND GROUND ELEVATION. THE LDP COORDINATES DEFINE TRUE GROUND DISTANCES. TO CONVERT THE LDP COORDINATES TO THE OREGON COORDINATE SYSTEM OF 1983, SOUTH ZONE, MULTIPLY THE LDP COORDINATES BY 0.99993913.

A LEICA TCA1800 TOTAL STATION (SERIAL NO. 418939) WAS USED FOR THIS SURVEY. IT HAS A STANDARD ANGULAR ERROR OF +/- ONE SECOND AND A STANDARD DISTANCE ERROR OF +/- 2 MM, +/- 2 PPM.

THE LEAST SQUARES ADJUSTMENT OF THE NETWORK PRODUCED:  
 (1) ANGULAR RESIDUALS (THE AMOUNT THE FIELD OBSERVED ANGLES WERE CHANGED DUE TO THE ADJUSTMENT), 100% BEING WITHIN 3 SECONDS.  
 (2) DISTANCE RESIDUALS (THE AMOUNT THE FIELD OBSERVED DISTANCES WERE CHANGED DUE TO THE ADJUSTMENT), 100% BEING WITHIN 2 MM.

THERE IS A 95% PROBABILITY THE FINAL POSITIONS OF THE CONTROL POINTS ARE WITHIN THE ERROR ELLIPSES AS SHOWN ON THE "CONFIDENCE LEVEL LIMITS" TABLE.

**NETWORK OBSERVATIONS**

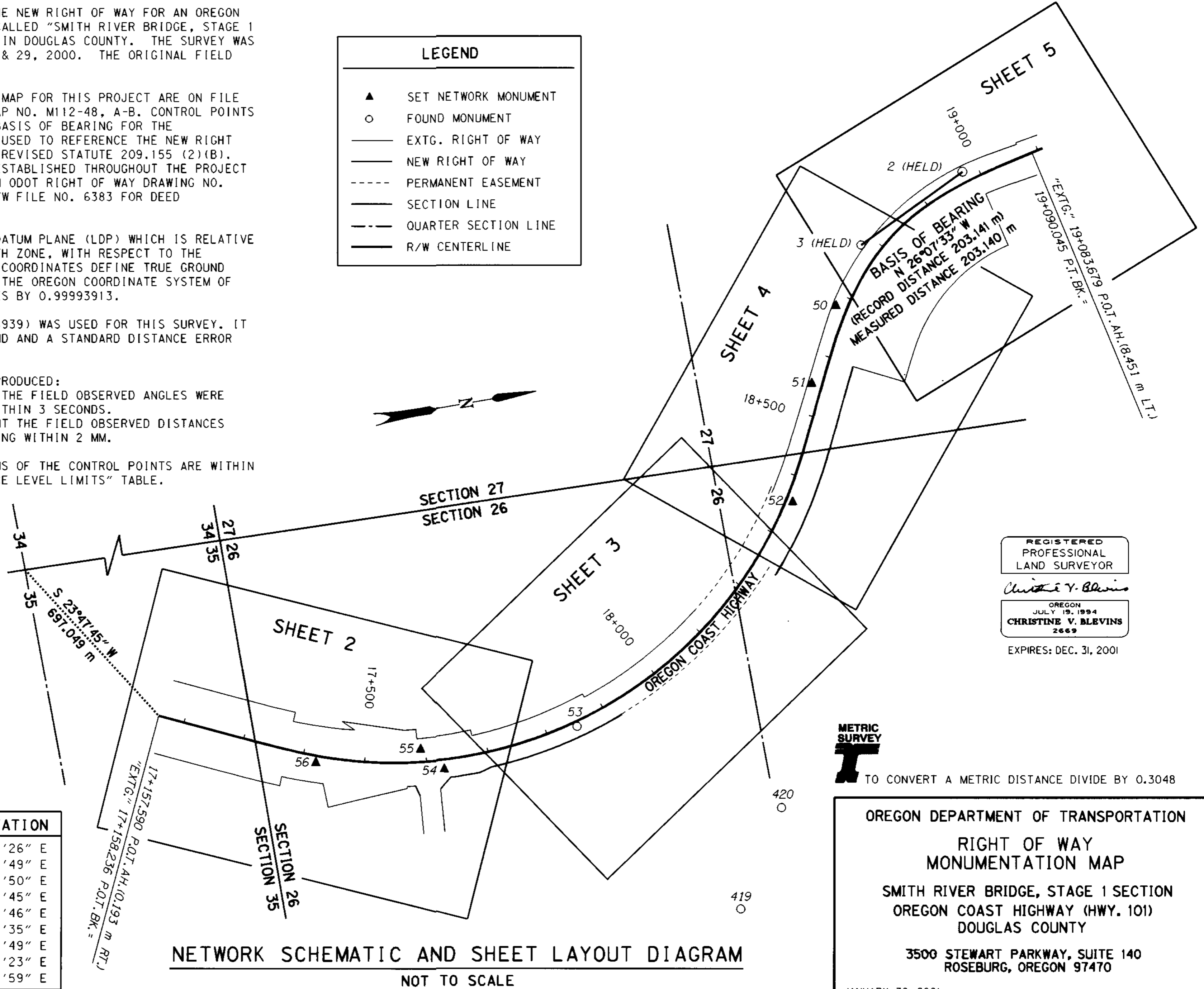
AT	TO
3	2, 50, 51
50	3, 51, 52
51	3, 50, 52, 53
52	50, 51, 53, 54
53	51, 52, 419, 54, 55, 51, 420
54	52, 53, 55, 56
55	53, 420, 54, 56
56	53, 54, 55
419	53, 420
420	55, 53, 419

**CONFIDENCE LEVEL LIMITS**

POINT	SEMI MAJOR	SEMI MINOR	ORIENTATION
50	0.003 m	0.001 m	N 32°27'26" E
51	0.006 m	0.001 m	N 29°24'49" E
52	0.011 m	0.001 m	N 24°14'50" E
53	0.026 m	0.002 m	N 41°25'45" E
54	0.032 m	0.003 m	N 50°11'46" E
419	0.032 m	0.005 m	N 18°22'35" E
55	0.032 m	0.003 m	N 53°07'49" E
420	0.027 m	0.006 m	N 16°20'23" E
56	0.036 m	0.004 m	N 59°05'59" E

**LEGEND**

- ▲ SET NETWORK MONUMENT
- FOUND MONUMENT
- EXTG. RIGHT OF WAY
- NEW RIGHT OF WAY
- - - PERMANENT EASEMENT
- SECTION LINE
- - - QUARTER SECTION LINE
- R/W CENTERLINE



REGISTERED  
 PROFESSIONAL  
 LAND SURVEYOR  
 Christine V. Blevins  
 OREGON  
 JULY 19, 1994  
 CHRISTINE V. BLEVINS  
 2669  
 EXPIRES: DEC. 31, 2001

**METRIC SURVEY**  
 TO CONVERT A METRIC DISTANCE DIVIDE BY 0.3048

OREGON DEPARTMENT OF TRANSPORTATION  
**RIGHT OF WAY  
 MONUMENTATION MAP**  
 SMITH RIVER BRIDGE, STAGE 1 SECTION  
 OREGON COAST HIGHWAY (HWY. 101)  
 DOUGLAS COUNTY  
 3500 STEWART PARKWAY, SUITE 140  
 ROSEBURG, OREGON 97470  
 JANUARY 30, 2001  
 KEY #05358

**NETWORK SCHEMATIC AND SHEET LAYOUT DIAGRAM**  
 NOT TO SCALE