

SEC. 35, 26, & 27, T. 21 S., R. 12 W., W. M.

FILED  
 Date: 3/6/2001 By: JP  
 This survey consists of: 5 SHEETS  
 Map: ST. HWY. 101-006A  
 Narrative: \_\_\_\_\_  
 Corner Rpt: \_\_\_\_\_

DOUGLAS COUNTY  
 SURVEYOR

**SURVEY NARRATIVE**

THE PURPOSE OF THIS SURVEY WAS TO MONUMENT THE NEW RIGHT OF WAY FOR AN OREGON DEPARTMENT OF TRANSPORTATION (ODOT) PROJECT CALLED "SMITH RIVER BRIDGE, STAGE 1 SECTION" LOCATED ON THE OREGON COAST HIGHWAY IN DOUGLAS COUNTY. THE SURVEY WAS PERFORMED BY AN ODOT SURVEY CREW NOVEMBER 28 & 29, 2000. THE ORIGINAL FIELD NOTES ARE ARCHIVED IN SALEM AS BOOK NO. 3741.

THE ORIGINAL HORIZONTAL CONTROL AND RECOVERY MAP FOR THIS PROJECT ARE ON FILE AT THE DOUGLAS COUNTY SURVEYOR'S OFFICE AS MAP NO. M112-48, A-B. CONTROL POINTS NOS. 2 AND 3 WERE RECOVERED AND USED AS THE BASIS OF BEARING FOR THE MONUMENTATION SURVEY. THE NETWORK OPTION WAS USED TO REFERENCE THE NEW RIGHT OF WAY AND CONTROLLING CENTERLINE PER OREGON REVISED STATUTE 209.155 (2)(B). USING POINTS NOS. 2 AND 3 A NEW NETWORK WAS ESTABLISHED THROUGHOUT THE PROJECT LIMITS. THE CENTERLINE SHOWN HERE IS BASED ON ODOT RIGHT OF WAY DRAWING NO. 10B-9-14 (PART 1 OF 2). ALSO REFER TO ODOT R/W FILE NO. 6383 FOR DEED DESCRIPTIONS OF PURCHASED RIGHT OF WAY.

COORDINATES ON THIS DRAWING UTILIZE A LOCAL DATUM PLANE (LDP) WHICH IS RELATIVE TO THE OREGON COORDINATE SYSTEM OF 1983, SOUTH ZONE, WITH RESPECT TO THE LOCAL LATITUDE AND GROUND ELEVATION. THE LDP COORDINATES DEFINE TRUE GROUND DISTANCES. TO CONVERT THE LDP COORDINATES TO THE OREGON COORDINATE SYSTEM OF 1983, SOUTH ZONE, MULTIPLY THE LDP COORDINATES BY 0.99993913.

A LEICA TCA1800 TOTAL STATION (SERIAL NO. 418939) WAS USED FOR THIS SURVEY. IT HAS A STANDARD ANGULAR ERROR OF +/- ONE SECOND AND A STANDARD DISTANCE ERROR OF +/- 2 MM, +/- 2 PPM.

THE LEAST SQUARES ADJUSTMENT OF THE NETWORK PRODUCED:

- (1) ANGULAR RESIDUALS (THE AMOUNT THE FIELD OBSERVED ANGLES WERE CHANGED DUE TO THE ADJUSTMENT), 100% BEING WITHIN 3 SECONDS.
- (2) DISTANCE RESIDUALS (THE AMOUNT THE FIELD OBSERVED DISTANCES WERE CHANGED DUE TO THE ADJUSTMENT), 100% BEING WITHIN 2 MM.

THERE IS A 95% PROBABILITY THE FINAL POSITIONS OF THE CONTROL POINTS ARE WITHIN THE ERROR ELLIPSES AS SHOWN ON THE "CONFIDENCE LEVEL LIMITS" TABLE.

**NETWORK OBSERVATIONS**

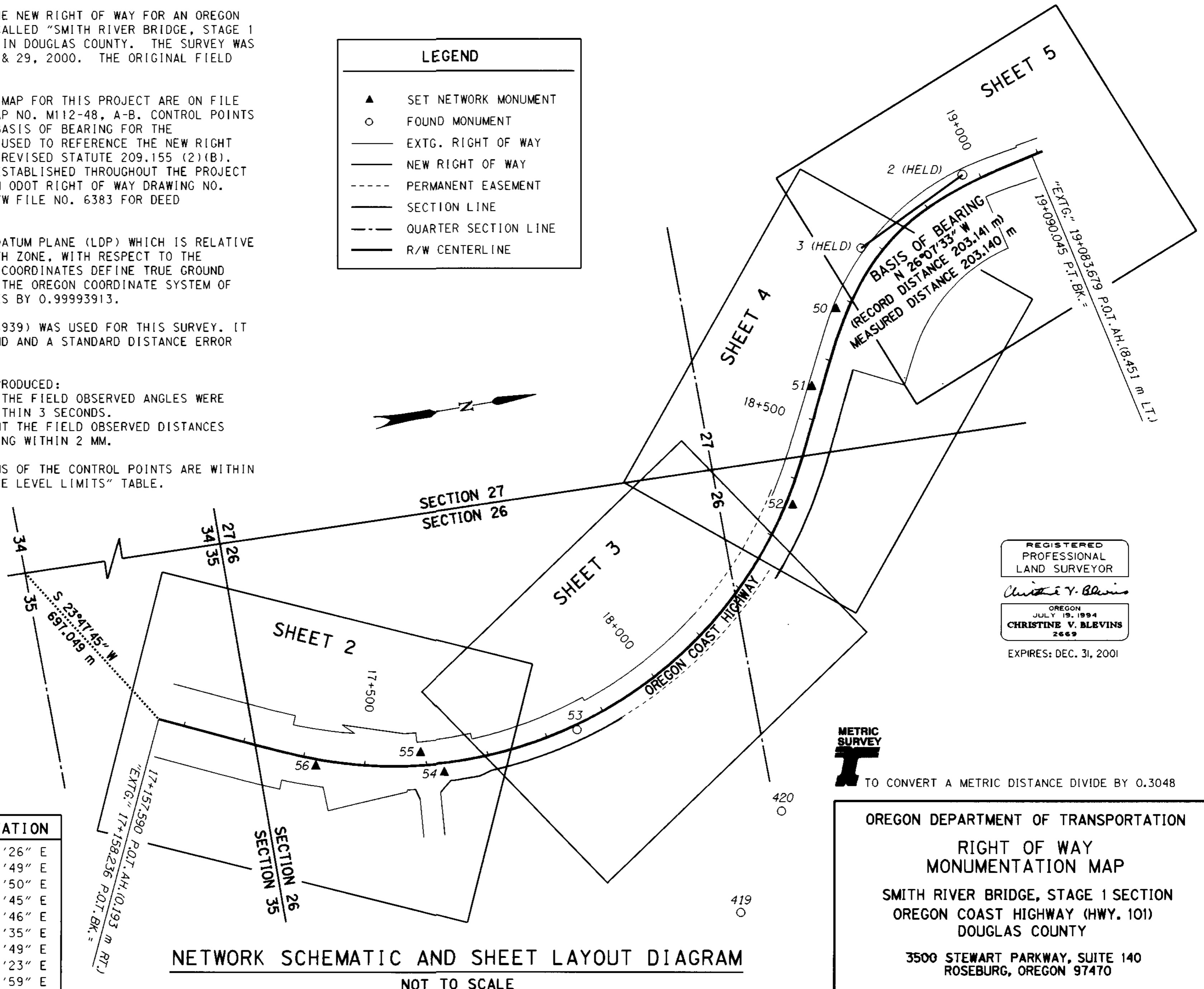
AT	TO
3	2, 50, 51
50	3, 51, 52
51	3, 50, 52, 53
52	50, 51, 53, 54
53	51, 52, 419, 54, 55, 51, 420
54	52, 53, 55, 56
55	53, 420, 54, 56
56	53, 54, 55
419	53, 420
420	55, 53, 419

**CONFIDENCE LEVEL LIMITS**

POINT	SEMI MAJOR	SEMI MINOR	ORIENTATION
50	0.003 m	0.001 m	N 32°27'26" E
51	0.006 m	0.001 m	N 29°24'49" E
52	0.011 m	0.001 m	N 24°14'50" E
53	0.026 m	0.002 m	N 41°25'45" E
54	0.032 m	0.003 m	N 50°11'46" E
419	0.032 m	0.005 m	N 18°22'35" E
55	0.032 m	0.003 m	N 53°07'49" E
420	0.027 m	0.006 m	N 16°20'23" E
56	0.036 m	0.004 m	N 59°05'59" E

**LEGEND**

- ▲ SET NETWORK MONUMENT
- FOUND MONUMENT
- EXTG. RIGHT OF WAY
- NEW RIGHT OF WAY
- - - PERMANENT EASEMENT
- SECTION LINE
- - - QUARTER SECTION LINE
- R/W CENTERLINE



REGISTERED  
 PROFESSIONAL  
 LAND SURVEYOR  
 Christine V. Blevins  
 OREGON  
 JULY 19, 1994  
 CHRISTINE V. BLEVINS  
 2669  
 EXPIRES: DEC. 31, 2001



TO CONVERT A METRIC DISTANCE DIVIDE BY 0.3048

OREGON DEPARTMENT OF TRANSPORTATION  
 RIGHT OF WAY  
 MONUMENTATION MAP  
 SMITH RIVER BRIDGE, STAGE 1 SECTION  
 OREGON COAST HIGHWAY (HWY. 101)  
 DOUGLAS COUNTY  
 3500 STEWART PARKWAY, SUITE 140  
 ROSEBURG, OREGON 97470

JANUARY 30, 2001  
 KEY #05358

SHEET 1 OF 5

NW 1/4 SEC. 35 AND SW 1/4 SEC. 26, T. 21 S., R. 12 W., W. M.

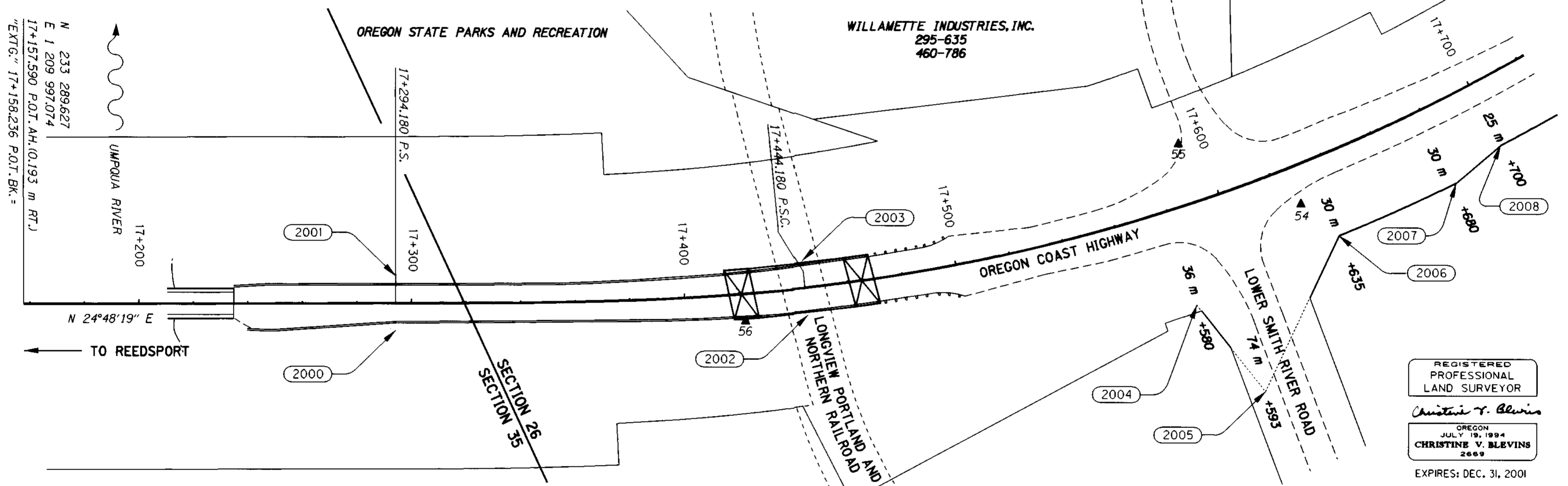
FILED

Date: 3/6/2001 By: JP  
 This survey consists of: 5 SHEETS  
 Map: St. Hwy. 101-006B  
 Narrative: \_\_\_\_\_  
 Corner Rpt: \_\_\_\_\_

DOUGLAS COUNTY  
 SURVEYOR

NETWORK POINT COORDINATE TABLE

POINT ID	LDP NORTHING	LDP EASTING	DESCRIPTION
54	233729.954	1210160.169	SET 16 mm X 762 mm IRON REBAR WITH A 38 mm BRASS CAP STAMPED "O.D.O.T. CONTROL 54" 50 mm BELOW SURFACE, STABILIZED WITH 300 mm DIAMETER X 300 mm DEEP CONC.
55	233698.377	1210121.272	SET 16 mm X 762 mm IRON REBAR WITH A 38 mm BRASS CAP STAMPED "O.D.O.T. CONTROL 55" FLUSH WITH SURFACE, STABILIZED WITH 300 mm DIAMETER X 300 mm DEEP CONC.
56	233527.484	1210113.602	SET 16 mm X 762 mm IRON REBAR WITH A 38 mm BRASS CAP STAMPED "O.D.O.T. CONTROL 56" 50 mm BELOW SURFACE, STABILIZED WITH 300 mm DIAMETER X 300 mm DEEP CONC.

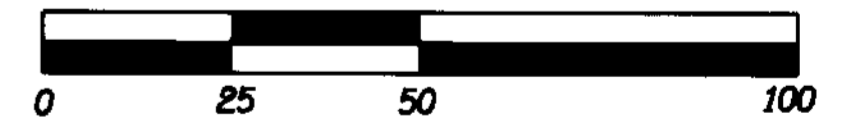


R/W POINT LIST (NO MONUMENTS SET)

POINT ID	LDP NORTHING	LDP EASTING	STATION	OFFSET	DESCRIPTION
2000	233409.420	1210063.456	17+294.180 P.S.	10.000 m RT.	REFERENCE POINT
2001	233417.810	1210045.302	17+294.180 P.S.	10.000 m LT.	REFERENCE POINT
2002	233548.729	1210121.751	17+444.180 P.S.C.	10.000 m RT.	REFERENCE POINT
2003	233555.086	1210102.787	17+444.180 P.S.C.	10.000 m LT.	REFERENCE POINT
2004	233679.614	1210178.148	17+580.000	36.000 m RT.	FALSE CALL
2005	233689.178	1210217.514	17+593.000	74.000 m RT.	FALSE CALL
2006	233737.549	1210177.069	17+635.000	30.000 m RT.	RIGHT OF WAY POINT
2007	233784.508	1210177.634	17+680.000	30.000 m RT.	RIGHT OF WAY POINT
2008	233805.120	1210171.901	17+700.000	25.000 m RT.	RIGHT OF WAY POINT

LEGEND	
	SET NETWORK MONUMENT
	EDGE OF PAVEMENT
	CONCRETE BARRIER
	GUARDRAIL
	EXTG. RIGHT OF WAY
	FALSE CALL LINE
	NEW RIGHT OF WAY
	PERMANENT EASEMENT
	SECTION LINE
	RIGHT OF WAY POINT NO.

SCALE 1:1000 METERS



TO CONVERT A METRIC DISTANCE DIVIDE BY 0.3048

OREGON DEPARTMENT OF TRANSPORTATION  
 RIGHT OF WAY  
 MONUMENTATION MAP  
 SMITH RIVER BRIDGE, STAGE 1 SECTION  
 OREGON COAST HIGHWAY (HWY. 101)  
 DOUGLAS COUNTY  
 3500 STEWART PARKWAY, SUITE 140  
 ROSEBURG, OREGON 97470

JANUARY 30, 2001  
 KEY #05358

SHEET 2 OF 5

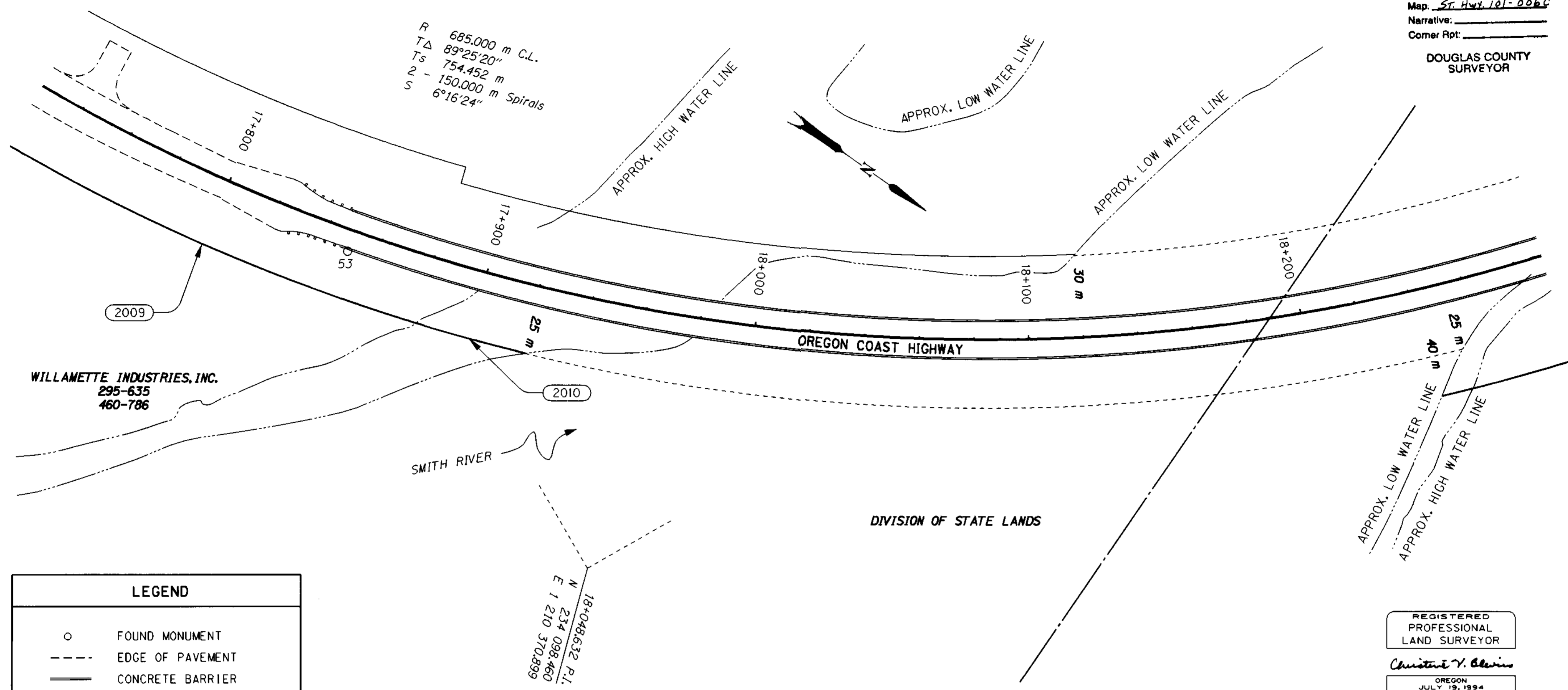
SW 1/4 SEC. 26, T. 21 S., R. 12 W., W. M.

FILED

Date: 3/6/2001 By: JP  
 This survey consists of: 5 SHEETS  
 Map: ST. HWY. 101-006C  
 Narrative: \_\_\_\_\_  
 Corner Rpt: \_\_\_\_\_

DOUGLAS COUNTY SURVEYOR

R 685.000 m C.L.  
 TΔ 89°25'20"  
 Ts 754.452 m  
 2 - 150.000 m Spirals  
 S 6°16'24"



WILLAMETTE INDUSTRIES, INC.  
 295-635  
 460-786

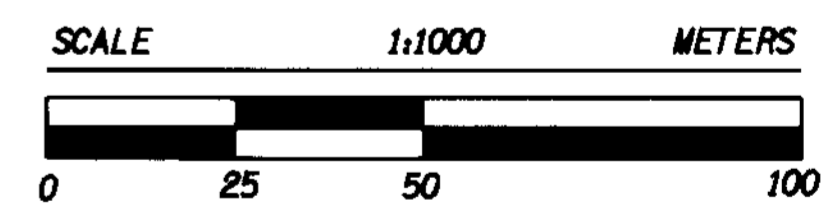
18+048.632 P.I.  
 N 234 098.460  
 E 1 210 370.899

LEGEND	
○	FOUND MONUMENT
---	EDGE OF PAVEMENT
====	CONCRETE BARRIER
++++	GUARDRAIL
-----	EDGE OF RIVER
----	EXTG. RIGHT OF WAY
—	NEW RIGHT OF WAY
----	PERMANENT EASEMENT
----	QUARTER SECTION LINE
○	RIGHT OF WAY POINT NO.

R/W POINT LIST (NO MONUMENTS SET)

POINT ID	LDP NORTHING	LDP EASTING	STATION	OFFSET	DESCRIPTION
2009	233907.895	1210159.195	17+800.000	25.000 m RT.	RIGHT OF WAY POINT
2010	234007.729	1210131.673	17+900.000	25.000 m RT.	RIGHT OF WAY POINT

REGISTERED PROFESSIONAL LAND SURVEYOR  
 Christine V. Blevins  
 OREGON JULY 19, 1994  
 CHRISTINE V. BLEVINS 2669  
 EXPIRES: DEC. 31, 2001



TO CONVERT A METRIC DISTANCE DIVIDE BY 0.3048

NETWORK POINT COORDINATE TABLE

POINT ID	LDP NORTHING	LDP EASTING	DESCRIPTION
53	233953.143	1210130.894	FOUND 80 mm BRASS DISK SET IN CONC. BY ODOT CONSTRUCTION CREW. STAMPED "OREGON DEPARTMENT OF TRANSPORTATION CREW 3811 CONTROL POINT" SET IN CONC. FLUSH WITH SURFACE. WE STAMPED "53" ON THE DISK AT THIS TIME.
419	234163.719	1210468.073	FOUND 80 mm BRASS DISK SET IN CONC. BY ODOT CONSTRUCTION CREW. STAMPED "OREGON DEPARTMENT OF TRANSPORTATION CREW 3811 CONTROL POINT 419" FLUSH WITH SURFACE IN GOOD CONDITION. (SEE SHEET 1 FOR LOCATION)
420	234256.985	1210317.313	FOUND 80 mm BRASS DISK SET IN CONC. BY ODOT CONSTRUCTION CREW. STAMPED "OREGON DEPARTMENT OF TRANSPORTATION CREW 3811 CONTROL POINT 420" FLUSH WITH SURFACE IN GOOD CONDITION. (SEE SHEET 1 FOR LOCATION)

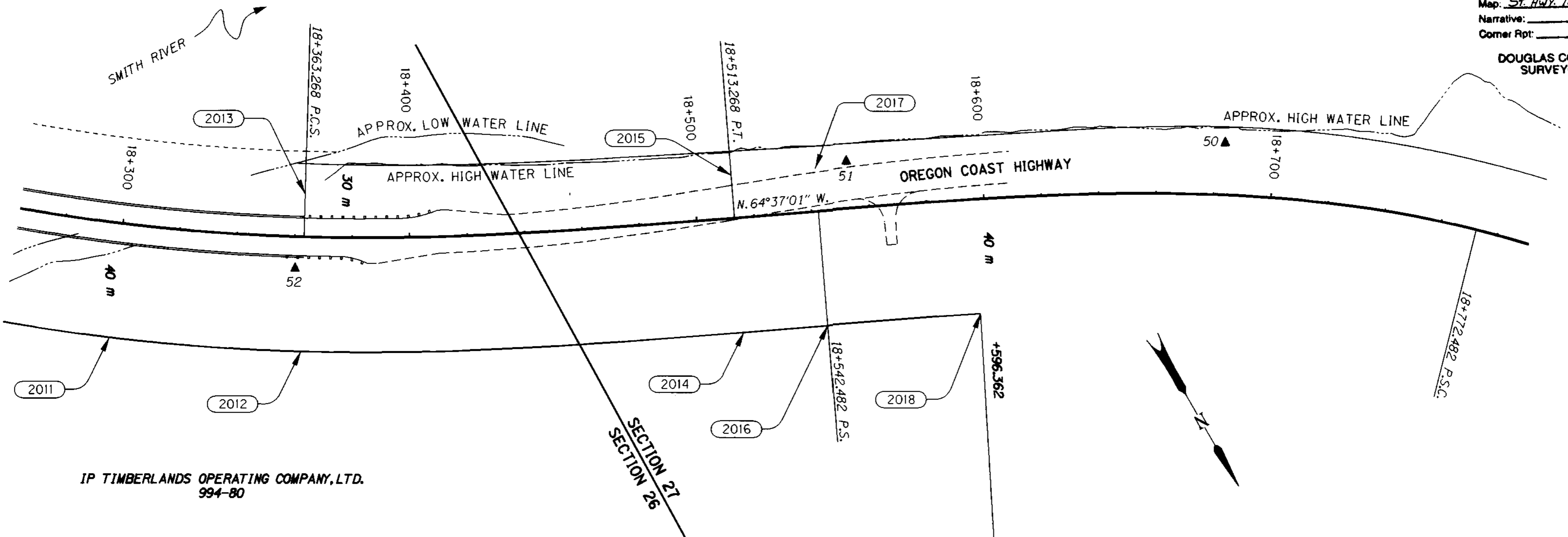
OREGON DEPARTMENT OF TRANSPORTATION  
 RIGHT OF WAY MONUMENTATION MAP  
 SMITH RIVER BRIDGE, STAGE 1 SECTION  
 OREGON COAST HIGHWAY (HWY. 101)  
 DOUGLAS COUNTY  
 3500 STEWART PARKWAY, SUITE 140  
 ROSEBURG, OREGON 97470

JANUARY 30, 2001  
 KEY #05358

SHEET 3 OF 5

NW 1/4 SEC. 26 AND NE 1/4 SEC. 27, T. 21 S., R. 12 W., W. M.

FILED  
 Date: 3/6/2001 By: JP  
 This survey consists of: 5 SHEETS  
 Map: ST. HWY. 101-006D  
 Narrative:  
 Corner Rpt:  
 DOUGLAS COUNTY SURVEYOR



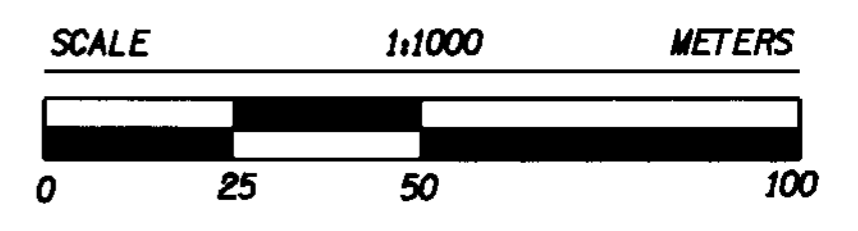
IP TIMBERLANDS OPERATING COMPANY, LTD.  
 994-80

R/W POINT LIST (NO MONUMENTS SET)

POINT ID	LDP NORTHING	LDP EASTING	STATION	OFFSET	DESCRIPTION
2011	234349.029	1209898.582	18+300.000	40.000 m RT.	RIGHT OF WAY POINT
2012	234386.753	1209843.285	18+363.268 P.C.S.	40.000 m RT.	RIGHT OF WAY POINT
2013	234339.936	1209814.420	18+363.268 P.C.S.	15.000 m LT.	REFERENCE POINT
2014	234458.008	1209706.427	18+513.268 P.T.	40.000 m RT.	RIGHT OF WAY POINT
2015	234408.317	1209682.850	18+513.268 P.T.	15.000 m LT.	REFERENCE POINT
2016	234470.531	1209680.033	18+542.482 P.S.	40.000 m RT.	RIGHT OF WAY POINT
2017	234420.840	1209656.457	18+542.482 P.S.	15.000 m LT.	REFERENCE POINT
2018	234493.604	1209632.144	18+596.362	40.000 m RT.	RIGHT OF WAY POINT

LEGEND	
▲	SET NETWORK MONUMENT
---	EDGE OF PAVEMENT
—	CONCRETE BARRIER
—+—+—+—	GUARDRAIL
---	EDGE OF RIVER
---	EXTG. RIGHT OF WAY
---	NEW RIGHT OF WAY
---	PERMANENT EASEMENT
—	SECTION LINE
○	RIGHT OF WAY POINT NO.

REGISTERED PROFESSIONAL LAND SURVEYOR  
 Christine V. Blevins  
 OREGON JULY 19, 1994  
 CHRISTINE V. BLEVINS 2669  
 EXPIRES: DEC. 31, 2001



TO CONVERT A METRIC DISTANCE DIVIDE BY 0.3048

NETWORK POINT COORDINATE TABLE

POINT ID	LDP NORTHING	LDP EASTING	DESCRIPTION
50	234484.104	1209528.033	SET 16 mm X 762 mm IRON REBAR WITH A 38 mm BRASS CAP STAMPED "O.D.O.T. CONTROL 50" 100 mm BELOW SURFACE STABILIZED WITH 300 mm DIAMETER X 300 mm DEEP CONC.
51	234423.673	1209645.783	SET 16 mm X 762 mm IRON REBAR WITH A 38 mm BRASS CAP STAMPED "O.D.O.T. CONTROL 51" 200 mm BELOW SURFACE STABILIZED WITH 300 mm DIAMETER X 300 mm DEEP CONC.
52	234360.241	1209830.193	SET 16 mm X 762 mm IRON REBAR WITH A 38 mm BRASS CAP STAMPED "O.D.O.T. CONTROL 52" 100 mm BELOW SURFACE STABILIZED WITH 300 mm DIAMETER X 300 mm DEEP CONC.

OREGON DEPARTMENT OF TRANSPORTATION  
 RIGHT OF WAY MONUMENTATION MAP  
 SMITH RIVER BRIDGE, STAGE 1 SECTION  
 OREGON COAST HIGHWAY (HWY. 101)  
 DOUGLAS COUNTY  
 3500 STEWART PARKWAY, SUITE 140  
 ROSEBURG, OREGON 97470  
 JANUARY 30, 2001  
 KEY #05358  
 SHEET 4 OF 5

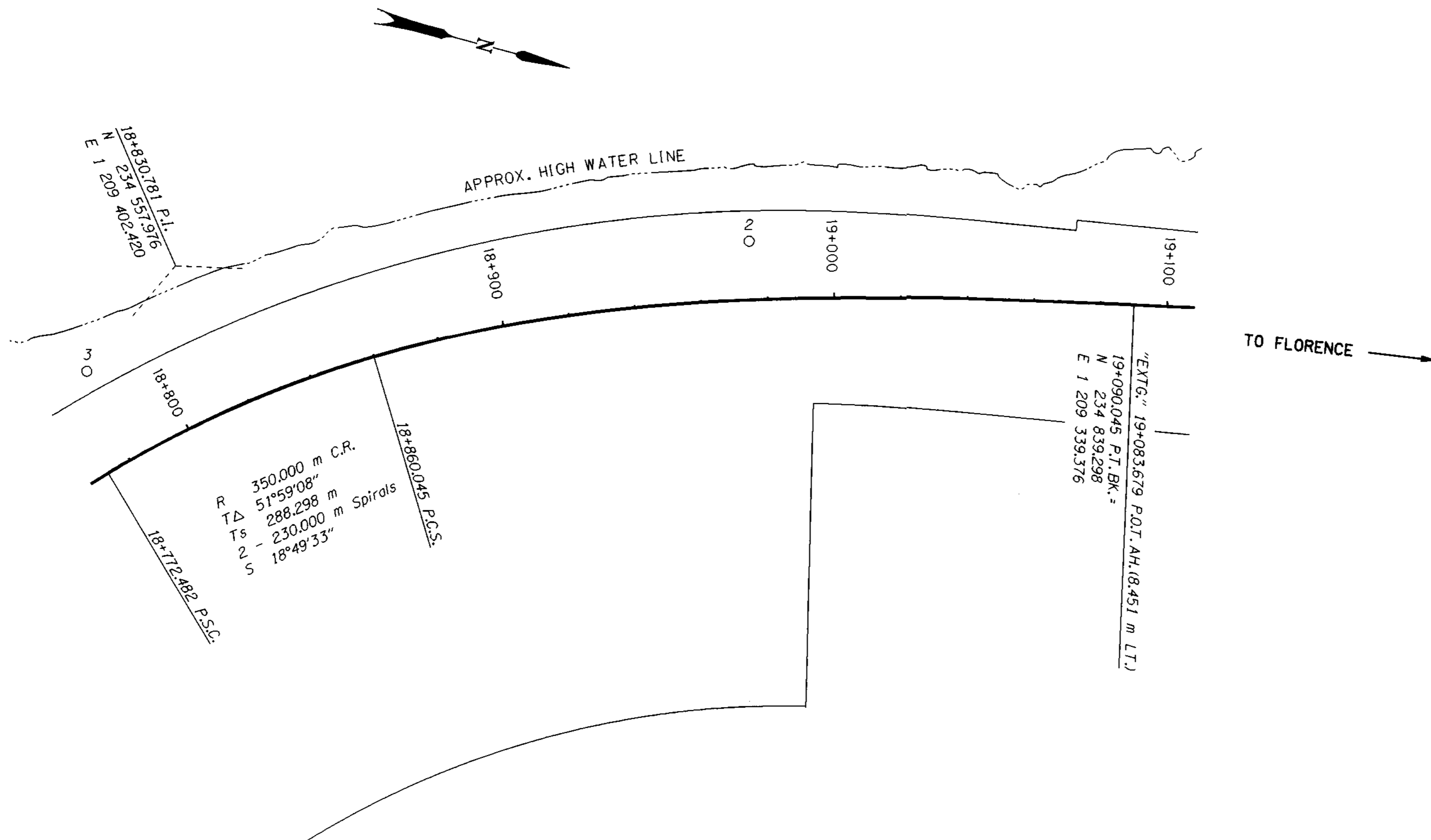
NE 1/4 SEC. 27, T. 21 S., R. 12 W., W. M.

FILED

Date: 3/6/2001 By: JP  
 This survey consists of: 5 SHEETS  
 Map: ST. HWY. 101-006E  
 Narrative: \_\_\_\_\_  
 Corner Rpt: \_\_\_\_\_

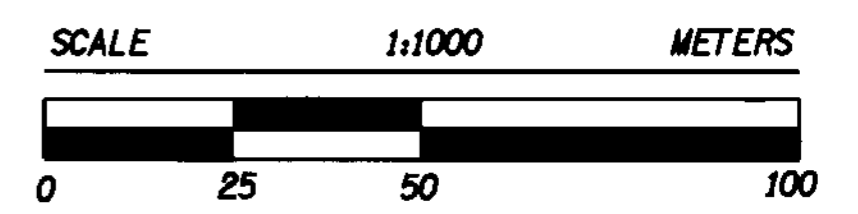
DOUGLAS COUNTY  
SURVEYOR

LEGEND	
○	FOUND MONUMENT
—	EXTG. RIGHT OF WAY
- - -	EDGE OF RIVER



TO FLORENCE →

REGISTERED  
PROFESSIONAL  
LAND SURVEYOR  
  
*Christine V. Blevins*  
  
OREGON  
JULY 19, 1994  
CHRISTINE V. BLEVINS  
2669  
  
EXPIRES: DEC. 31, 2001



TO CONVERT A METRIC DISTANCE DIVIDE BY 0.3048

NETWORK POINT COORDINATE TABLE

POINT ID	LDP NORTHING	LDP EASTING	DESCRIPTION
2	234722.688	1209350.623	FOUND 1 1/2" ALUM. CAP STAMPED "OREGON STATE HWY. DIV. SR-2 1990" FLUSH WITH SURFACE IN GOOD CONDITION.
3	234540.302	1209440.075	FOUND 1 1/2" ALUM. CAP STAMPED "OREGON STATE HWY. DIV. SR-3 1990" FLUSH WITH SURFACE IN GOOD CONDITION.

OREGON DEPARTMENT OF TRANSPORTATION  
 RIGHT OF WAY  
 MONUMENTATION MAP  
 SMITH RIVER BRIDGE, STAGE 1 SECTION  
 OREGON COAST HIGHWAY (HWY. 101)  
 DOUGLAS COUNTY  
 3500 STEWART PARKWAY, SUITE 140  
 ROSEBURG, OREGON 97470  
 JANUARY 30, 2001  
 KEY #05358