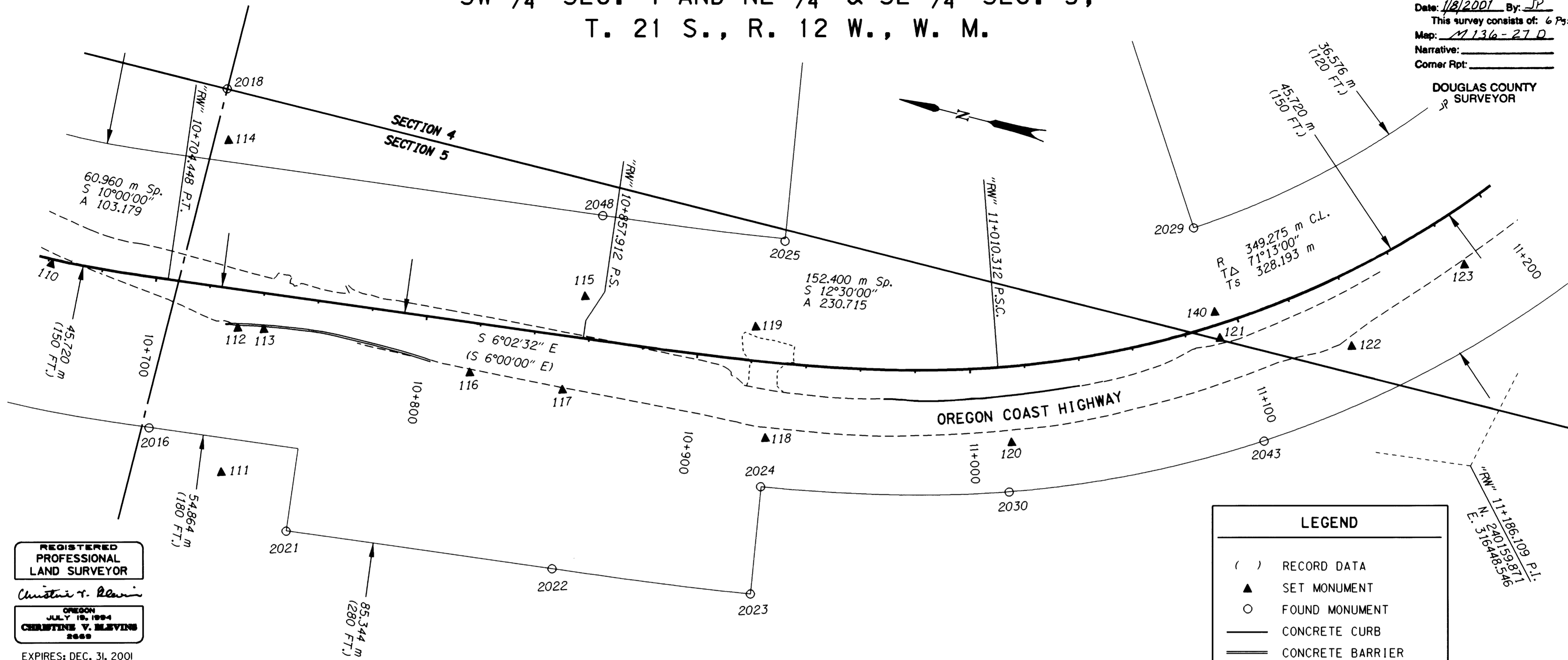


SW 1/4 SEC. 4 AND NE 1/4 & SE 1/4 SEC. 5,  
T. 21 S., R. 12 W., W. M.

FILED  
Date: 1/8/2001 By: JP  
This survey consists of: 6 Pgs.  
Map: M136-27 D  
Narrative:  
Corner Rpt:

DOUGLAS COUNTY  
SURVEYOR



REGISTERED  
PROFESSIONAL  
LAND SURVEYOR

Christine V. Blavin

OREGON  
JULY 19, 1994  
CHRISTINE V. BLEVINS  
2689

EXPIRES: DEC. 31, 2001

**LEGEND**

- ( ) RECORD DATA
- ▲ SET MONUMENT
- FOUND MONUMENT
- CONCRETE CURB
- CONCRETE BARRIER
- - - EDGE OF PAVEMENT
- - - - EDGE OF GRAVEL
- EXTG. RIGHT OF WAY
- SECTION LINE
- - - QUARTER SECTION LINE

SCALE 1:1000 METERS



1 METER = 3937 U.S. FEET / 1200  
TO CONVERT A METRIC DISTANCE DIVIDE BY 0.30480061

POINT ID	LDP NORTHING	LDP EASTING	DESCRIPTION
111	240602.732	316334.209	SET 457 mm LONG WOOD HUB AND TACK, FLUSH WITH SURFACE.
112	240609.852	316387.053	SET 16 mm X 762 mm IRON REBAR WITH A 38 mm ALUM. CAP STAMPED "ODOT HORIZ. CONTROL 112" FLUSH WITH SURFACE.
113	240600.490	316388.845	SET 16 mm X 762 mm IRON REBAR WITH A 38 mm ALUM. CAP STAMPED "ODOT HORIZ. CONTROL 113" FLUSH WITH SURFACE.
114	240630.008	316452.997	SET 16 mm X 762 mm IRON REBAR WITH A 38 mm ALUM. CAP STAMPED "ODOT HORIZ. CONTROL 114" FLUSH WITH SURFACE.
115	240489.456	316429.522	SET 16 mm X 762 mm IRON REBAR WITH A 38 mm ALUM. CAP STAMPED "ODOT HORIZ. CONTROL 115" FLUSH WITH ASPHALT CONC. SURFACE OF OLD ROAD BED.
116	240523.532	316391.927	SET 16 mm X 762 mm IRON REBAR WITH A 38 mm BRASS CAP STAMPED "ODOT CONTROL 116" FLUSH WITH SURFACE.
117	240489.072	316394.116	SET 16 mm X 507 mm IRON REBAR WITH A 38 mm BRASS CAP STAMPED "ODOT CONTROL 117" FLUSH WITH SURFACE.
118	240412.811	316395.239	SET 16 mm X 762 mm IRON REBAR WITH A 38 mm BRASS CAP STAMPED "ODOT CONTROL 118" 30 mm ABOVE SURFACE STABILIZED WITH CONC. APPROXIMATELY 300 mm DEEP.
119	240426.193	316433.981	SET 16 mm X 762 mm IRON REBAR WITH A 38 mm ALUM. CAP STAMPED "ODOT HORIZ. CONTROL 119" FLUSH WITH SURFACE.
120	240325.036	316415.928	SET 16 mm X 762 mm IRON REBAR WITH A 38 mm BRASS CAP STAMPED "ODOT CONTROL 120" FLUSH WITH SURFACE.
121	240260.462	316471.808	SET 16 mm X 587 mm IRON REBAR WITH A 38 mm ALUM. CAP STAMPED "ODOT HORIZ. CONTROL 121" FLUSH WITH SURFACE.
122	240212.938	316480.766	SET 16 mm X 762 mm IRON REBAR WITH A 38 mm BRASS CAP STAMPED "ODOT CONTROL 122" FLUSH WITH SURFACE STABILIZED WITH CONC. APPROXIMATELY 300 mm DEEP.
123	240180.268	316519.886	SET 16 mm X 762 mm IRON REBAR WITH A 38 mm BRASS CAP STAMPED "ODOT CONTROL 123" FLUSH WITH SURFACE BEHIND GUARDRAIL.

NOTE: SEE SHEET 3 OF 6 FOR REMAINING MONUMENT DESCRIPTIONS

OREGON DEPARTMENT OF TRANSPORTATION  
HORIZONTAL CONTROL, RECOVERY,  
AND RETRACEMENT MAP  
ELBOW CREEK SLIDE  
OREGON COAST HIGHWAY (HWY. 101)  
DOUGLAS COUNTY  
3500 STEWART PARKWAY, SUITE 140  
ROSEBURG, OREGON 97470

JANUARY 2, 2001  
PROJECT KEY #10846

MAP FILE M136-27 D

MAP FILE M136-27 D