

COUNTY SURVEYORS FILE DATA
DO NOT REMOVE FROM OFFICE

NW 1/4 SEC. 4 AND NE 1/4 SEC. 5,
T. 21 S., R. 12 W., W. M.

FILED
Date: 1/2/2001 By: JP
This survey consists of: 6 P.S.
Map: M136-27 B
Narrative: _____
Corner Rpt: _____

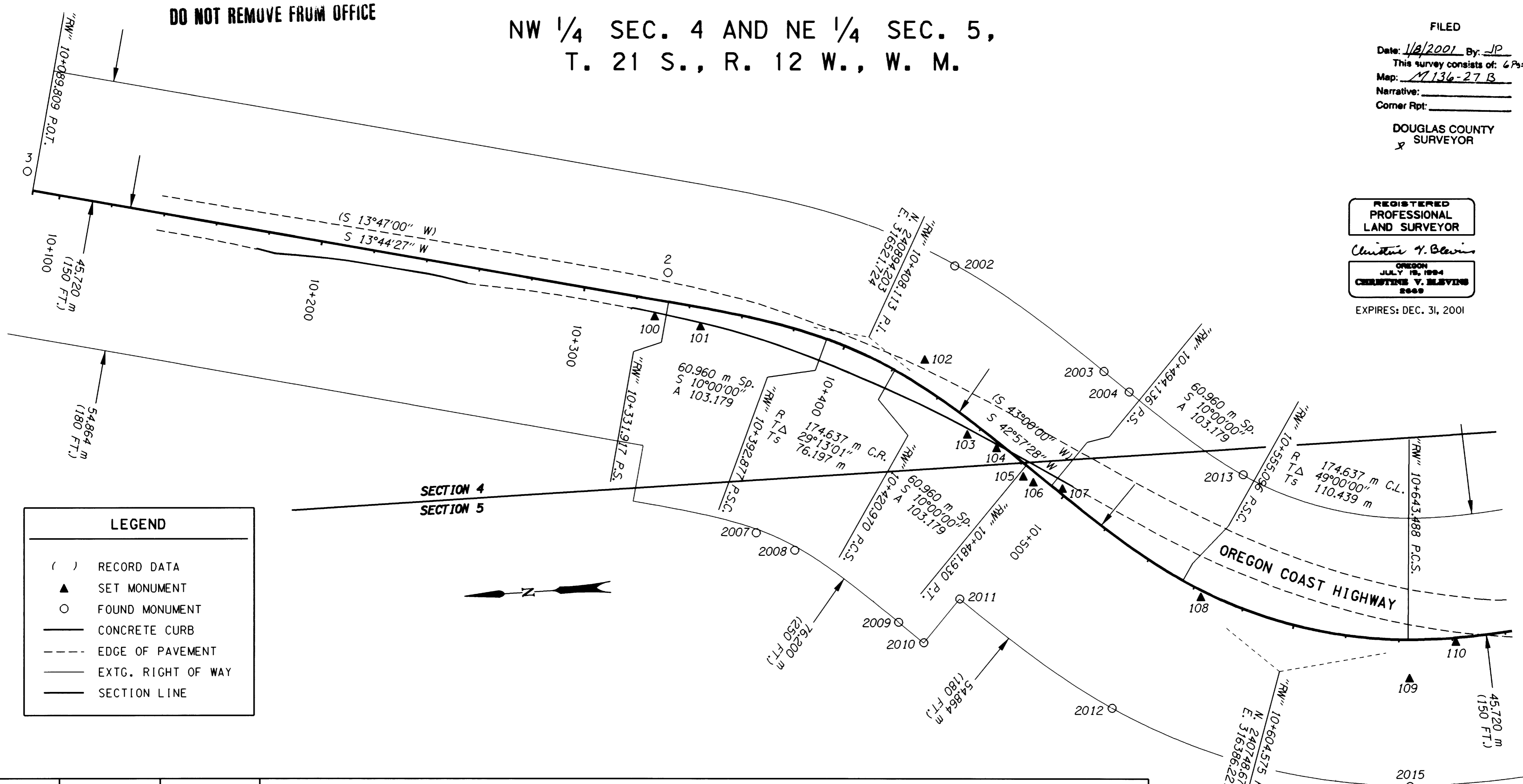
DOUGLAS COUNTY
SURVEYOR

REGISTERED
PROFESSIONAL
LAND SURVEYOR

Christine V. Blevins

OREGON
JULY 18, 1994
CHRISTINE V. BLEVINS
2000

EXPIRES: DEC. 31, 2001



LEGEND

- () RECORD DATA
- ▲ SET MONUMENT
- FOUND MONUMENT
- CONCRETE CURB
- - - EDGE OF PAVEMENT
- EXTG. RIGHT OF WAY
- SECTION LINE

POINT ID	LDP NORTHING	LDP EASTING	DESCRIPTION
2	240967.691	316550.923	FOUND 13 mm SQUARE IRON ROD WITH A 38 mm ALUM. CAP STAMPED "ODOT HORIZ. CONTROL 2" FLUSH WITH SURFACE IN GOOD CONDITION. ORANGE CARSONITE POST FOUND NEARBY. (REF. DOUGLAS COUNTY SURVEY *M129-38)
3	241204.948	316604.762	FOUND 13 mm SQUARE IRON ROD WITH A 38 mm ALUM. CAP STAMPED "ODOT HORIZ. CONTROL 3" FLUSH WITH SURFACE IN GOOD CONDITION. ORANGE CARSONITE WITNESS POST FOUND NEARBY. (REF. DOUGLAS COUNTY SURVEY *M129-38)
100	240973.724	316534.916	SET 16 mm X 762 mm IRON REBAR WITH A 38 mm BRASS CAP STAMPED "ODOT CONTROL 100" FLUSH WITH SURFACE.
101	240956.862	316530.020	SET 16 mm X 762 mm IRON REBAR WITH A 38 mm BRASS CAP STAMPED "ODOT CONTROL 101" FLUSH WITH SURFACE.
102	240873.820	316512.039	SET 16 mm X 762 mm IRON REBAR WITH A 38 mm ALUM. CAP STAMPED "ODOT HORIZ. CONTROL 102" FLUSH WITH SURFACE.
103	240859.685	316482.985	SET 16 mm X 762 mm IRON REBAR WITH A 38 mm BRASS CAP STAMPED "ODOT CONTROL 103" FLUSH WITH SURFACE.
104	240849.140	316477.152	SET 16 mm X 762 mm IRON REBAR WITH A 38 mm BRASS CAP STAMPED "ODOT CONTROL 104" FLUSH WITH SURFACE.
105	240839.804	316465.901	SET 16 mm X 762 mm IRON REBAR WITH A 38 mm BRASS CAP STAMPED "ODOT CONTROL 105" FLUSH WITH SURFACE.
106	240836.166	316463.447	SET 16 mm X 762 mm IRON REBAR WITH A 38 mm BRASS CAP STAMPED "ODOT CONTROL 106" FLUSH WITH SURFACE.
107	240825.425	316460.349	SET 16 mm X 762 mm IRON REBAR WITH A 38 mm BRASS CAP STAMPED "ODOT CONTROL 107" FLUSH WITH SURFACE.
108	240776.200	316416.237	SET 16 mm X 762 mm IRON REBAR WITH A 38 mm BRASS CAP STAMPED "ODOT CONTROL 108" FLUSH WITH SURFACE IN OLD ASPHALT CONC. ROAD BED.

SCALE 1:1000 METERS

METRIC SURVEY

1 METER = 3937 U.S. FEET / 1200
TO CONVERT A METRIC DISTANCE DIVIDE BY 0.30480061

OREGON DEPARTMENT OF TRANSPORTATION
HORIZONTAL CONTROL, RECOVERY,
AND RETRACEMENT MAP
ELBOW CREEK SLIDE
OREGON COAST HIGHWAY (HWY. 101)
DOUGLAS COUNTY
3500 STEWART PARKWAY, SUITE 140
ROSEBURG, OREGON 97470
JANUARY 2, 2001
PROJECT KEY *10846
SHEET 2 OF 6