

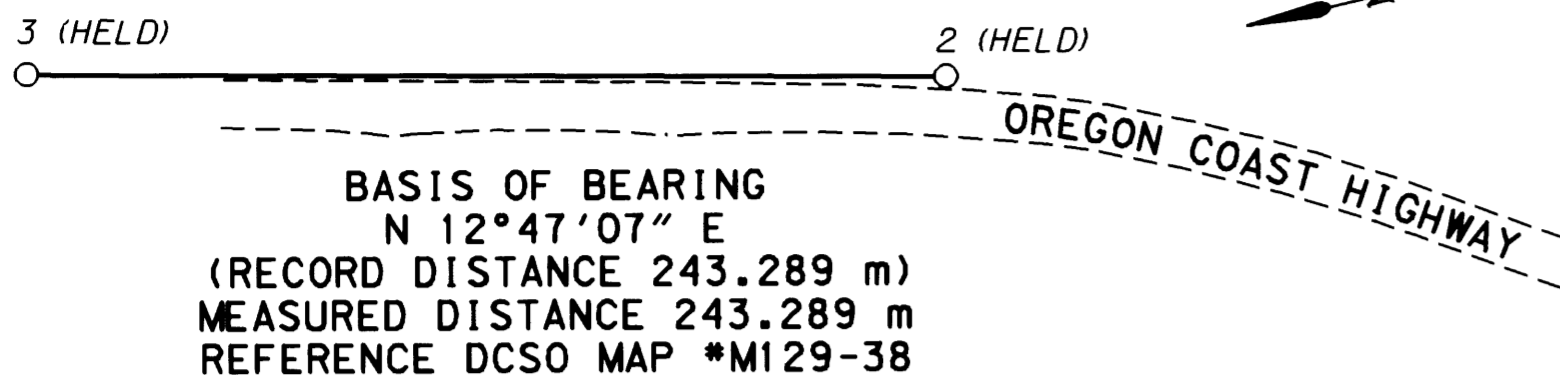
SEC. 4 & 5, T. 21 S., R. 12 W., W. M.

FILED
Date: 1/8/2001 By: JP
This survey consists of: 6 Pgs.
Map: 1136-27A
Narrative:
Corner Rpt:

DOUGLAS COUNTY
SURVEYOR

BASIS OF BEARING

(FROM SHEET 2 OF 6)



RETRACEMENT NARRATIVE

RETRACEMENT OF THE RIGHT-OF-WAY CENTERLINE AND BOUNDARY FOR THIS MAP ARE BASED ON ALIGNMENT DATA FOUND IN ODOT R/W DRG. NO. 7B-15-16 AND LOCATED R/W PINS FOUND DURING THE SURVEY. A TANGENT LINE WAS CREATED USING POINTS CALCULATED FROM A SPLIT OF THE DIFFERENCE BETWEEN RECORD OFFSETS OF R/W BOUNDARY POINTS 2036 AND 2037 (ENGLISH STA. 380+00) AND POINTS 2039 AND 2041 (ENGLISH STA. 385+00). THIS TANGENT LINE WAS THEN PROJECTED BACKWARD, RETRACING RECORD ALIGNMENT AND CURVE DATA TO THE BEGINNING OF THE PROJECT. STATIONING WAS OBTAINED BY CONVERTING ENGLISH STATION 375+47.33 P.T. TO METRIC. FOR THE PURPOSES OF THIS SURVEY THE PROPERTIES ADJACENT TO THE HIGHWAY CORRIDOR WERE NOT RETRACED.

CONFIDENCE LEVEL LIMITS

POINT	SEMI MAJOR	SEMI MINOR	ORIENTATION
100	0.003 m	0.002 m	S 61°24'10" E
101	0.003 m	0.002 m	S 70°04'03" E
102	0.003 m	0.001 m	S 69°57'51" E
103	0.003 m	0.001 m	S 61°38'23" E
104	0.003 m	0.001 m	S 61°22'46" E
107	0.004 m	0.001 m	S 59°21'17" E
109	0.007 m	0.001 m	S 58°11'02" E
110	0.008 m	0.001 m	S 61°62'28" E
105	0.004 m	0.002 m	S 61°17'12" E
106	0.004 m	0.002 m	S 61°00'00" E
108	0.006 m	0.001 m	S 56°33'24" E
112	0.009 m	0.001 m	S 66°23'04" E
113	0.009 m	0.001 m	S 67°12'53" E
116	0.011 m	0.001 m	S 71°30'31" E
117	0.012 m	0.001 m	S 73°14'42" E
118	0.014 m	0.002 m	S 75°57'06" E
115	0.012 m	0.002 m	S 77°31'07" E
120	0.016 m	0.002 m	S 80°09'30" E
111	0.010 m	0.002 m	S 60°02'08" E
114	0.008 m	0.002 m	S 75°05'06" E
119	0.013 m	0.002 m	S 79°53'40" E
122	0.019 m	0.003 m	S 87°46'12" E
121	0.018 m	0.003 m	S 86°24'29" E
123	0.020 m	0.003 m	N 88°29'03" E
140	0.018 m	0.003 m	S 87°13'43" E
124	0.022 m	0.005 m	N 81°21'03" E
125	0.023 m	0.005 m	N 79°38'50" E
126	0.023 m	0.006 m	N 75°50'09" E
128	0.028 m	0.009 m	N 59°06'18" E
129	0.029 m	0.010 m	N 55°51'38" E
127	0.025 m	0.008 m	N 65°24'27" E
130	0.028 m	0.010 m	N 54°10'14" E
131	0.032 m	0.011 m	N 48°43'32" E
132	0.033 m	0.011 m	N 46°29'23" E
138	0.035 m	0.012 m	N 42°52'27" E
139	0.036 m	0.012 m	N 41°51'12" E
133	0.033 m	0.011 m	N 49°34'30" E
135	0.036 m	0.011 m	N 46°20'29" E
137	0.032 m	0.012 m	N 40°48'00" E
136	0.033 m	0.012 m	N 43°37'22" E
134	0.035 m	0.011 m	N 47°54'08" E

NETWORK OBSERVATIONS

AT	TO
3	2, 100, 101, 102
2	3, 102, 103, 104, 107, 109, 110
100	3, 102
101	3, 102
102	3, 2, 100, 101, 103, 104, 107, 109, 3, 105, 106, 108
103	2, 102, 107, 109, 110
104	2, 102, 109, 110
105	102, 110, 112
106	102, 110, 112
107	2, 102, 109, 110, 112
108	102, 109, 110, 112, 113, 116, 117, 118
109	2, 102, 103, 104, 107, 108, 115
110	2, 103, 104, 105, 106, 107, 108, 112, 113, 2, 116, 117, 115, 118, 2, 120
112	105, 106, 107, 108, 110, 111, 114, 115, 105, 116, 117, 119, 120
111	112, 113
113	108, 110, 111, 114, 115, 116, 117, 119, 120
114	112, 113, 116
116	108, 110, 112, 113, 114, 115, 117, 119, 120
115	109, 110, 112, 113, 116, 117, 118, 120
117	108, 110, 112, 113, 116, 115, 119, 120
119	112, 113, 116, 117, 118
118	115, 119, 120, 122
120	110, 112, 113, 116, 115, 117, 118, 121, 122, 110, 123, 140
121	120, 122, 123,
140	120, 122, 123
122	118, 119, 120, 121, 140, 123, 124, 125, 126
123	120, 121, 122, 124, 125, 126, 140
124	122, 123, 125, 126
125	122, 123, 124, 126, 128, 129, 122, 123, 124, 127, 128, 129
127	126, 128,
128	125, 126, 127, 129, 130, 131, 132, 138, 139
130	128, 129
129	125, 126, 128, 130, 131, 132, 138, 139
131	126, 128, 129, 132, 133, 139, 126, 125
132	126, 129, 131, 133, 138, 139, 128
138	128, 129, 132, 135, 137
139	128, 129, 131, 132, 136, 137
136	139, 137
137	139, 138, 136
133	131, 132, 134
134	133, 135
135	138, 134

SURVEY NARRATIVE

THE PURPOSE OF THIS METRIC SURVEY WAS TO ESTABLISH HORIZONTAL CONTROL FOR AN OREGON DEPARTMENT OF TRANSPORTATION PROJECT CALLED "ELBOW CR. SLIDE" ON THE OREGON COAST HIGHWAY (HWY 101) FROM MILE POINT 204.8 TO MILE POINT 205.6. THE CONTROL NETWORK WAS CONDUCTED BY AN OREGON DEPARTMENT OF TRANSPORTATION (ODOT) SURVEY CREW BASED IN ROSEBURG FROM JULY 11 TO JULY 19, 2000. THE ORIGINAL FIELD NOTES ARE ARCHIVED IN SALEM AS BOOK #3735.

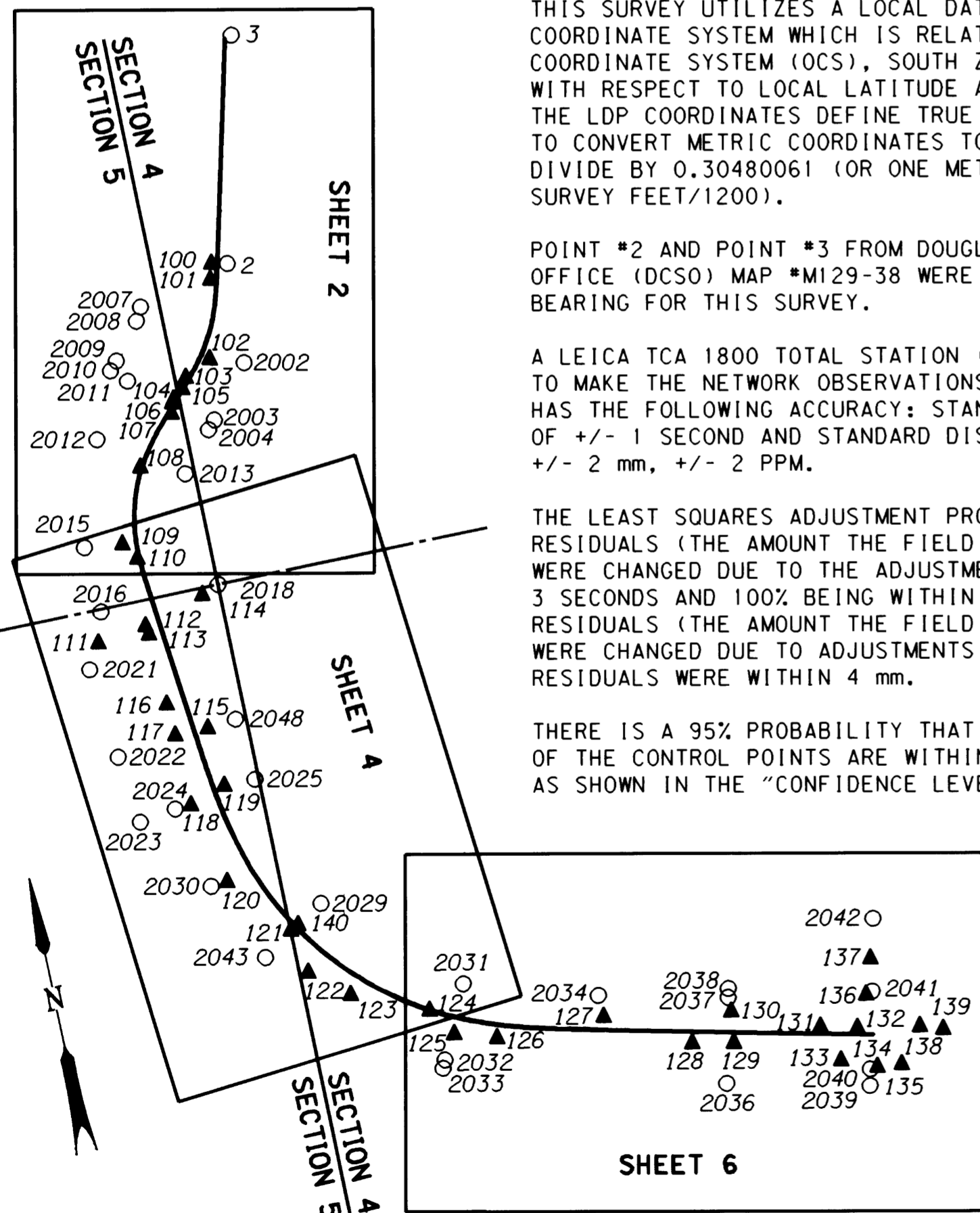
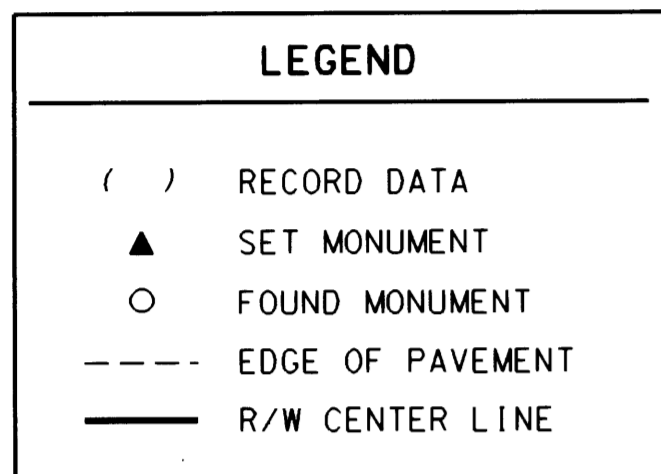
THIS SURVEY UTILIZES A LOCAL DATUM PLANE (LDP) COORDINATE SYSTEM WHICH IS RELATIVE TO THE OREGON COORDINATE SYSTEM (OCS), SOUTH ZONE, 1927 DATUM, WITH RESPECT TO LOCAL LATITUDE AND GROUND ELEVATIONS. THE LDP COORDINATES DEFINE TRUE GROUND DISTANCES. TO CONVERT METRIC COORDINATES TO ENGLISH COORDINATES, DIVIDE BY 0.30480061 (OR ONE METER = 3937 U.S. SURVEY FEET/1200).

POINT #2 AND POINT #3 FROM DOUGLAS COUNTY SURVEYORS OFFICE (DCSO) MAP #M129-38 WERE USED AS BASIS OF BEARING FOR THIS SURVEY.

A LEICA TCA 1800 TOTAL STATION (S/N 418939) WAS USED TO MAKE THE NETWORK OBSERVATIONS. THE LEICA TCA1800 HAS THE FOLLOWING ACCURACY: STANDARD ANGULAR ERROR OF +/- 1 SECOND AND STANDARD DISTANCE ERROR OF +/- 2 mm, +/- 2 PPM.

THE LEAST SQUARES ADJUSTMENT PRODUCED: ANGULAR RESIDUALS (THE AMOUNT THE FIELD OBSERVED ANGLES WERE CHANGED DUE TO THE ADJUSTMENT) 80% BEING WITHIN 3 SECONDS AND 100% BEING WITHIN 9 SECONDS. DISTANCE RESIDUALS (THE AMOUNT THE FIELD OBSERVED DISTANCES WERE CHANGED DUE TO ADJUSTMENTS) WHERE 100% OF THE RESIDUALS WERE WITHIN 4 mm.

THERE IS A 95% PROBABILITY THAT THE FINAL POSITIONS OF THE CONTROL POINTS ARE WITHIN THE ERROR ELLIPSES AS SHOWN IN THE "CONFIDENCE LEVEL LIMITS" TABLE.



REGISTERED
PROFESSIONAL
LAND SURVEYOR
Christine V. Blawie
OREGON
JULY 19, 1994
CHRISTINE V. BLAWIE
2000
EXPIRES: DEC. 31, 2001



1 METER = 3937 U.S. FEET / 1200
TO CONVERT A METRIC DISTANCE DIVIDE BY 0.30480061

OREGON DEPARTMENT OF TRANSPORTATION
HORIZONTAL CONTROL, RECOVERY,
AND RETRACEMENT MAP
ELBOW CREEK SLIDE
OREGON COAST HIGHWAY (HWY. 101)
DOUGLAS COUNTY
3500 STEWART PARKWAY, SUITE 140
ROSEBURG, OREGON 97470

JANUARY 2, 2001
PROJECT KEY #10846

SHEET 1 OF 6

COUNTY SURVEYORS FILE DATA
DO NOT REMOVE FROM OFFICE

NW 1/4 SEC. 4 AND NE 1/4 SEC. 5,
T. 21 S., R. 12 W., W. M.

FILED
Date: 1/2/2001 By: JP
This survey consists of: 6 P.S.
Map: M136-27 B
Narrative: _____
Corner Rpt: _____

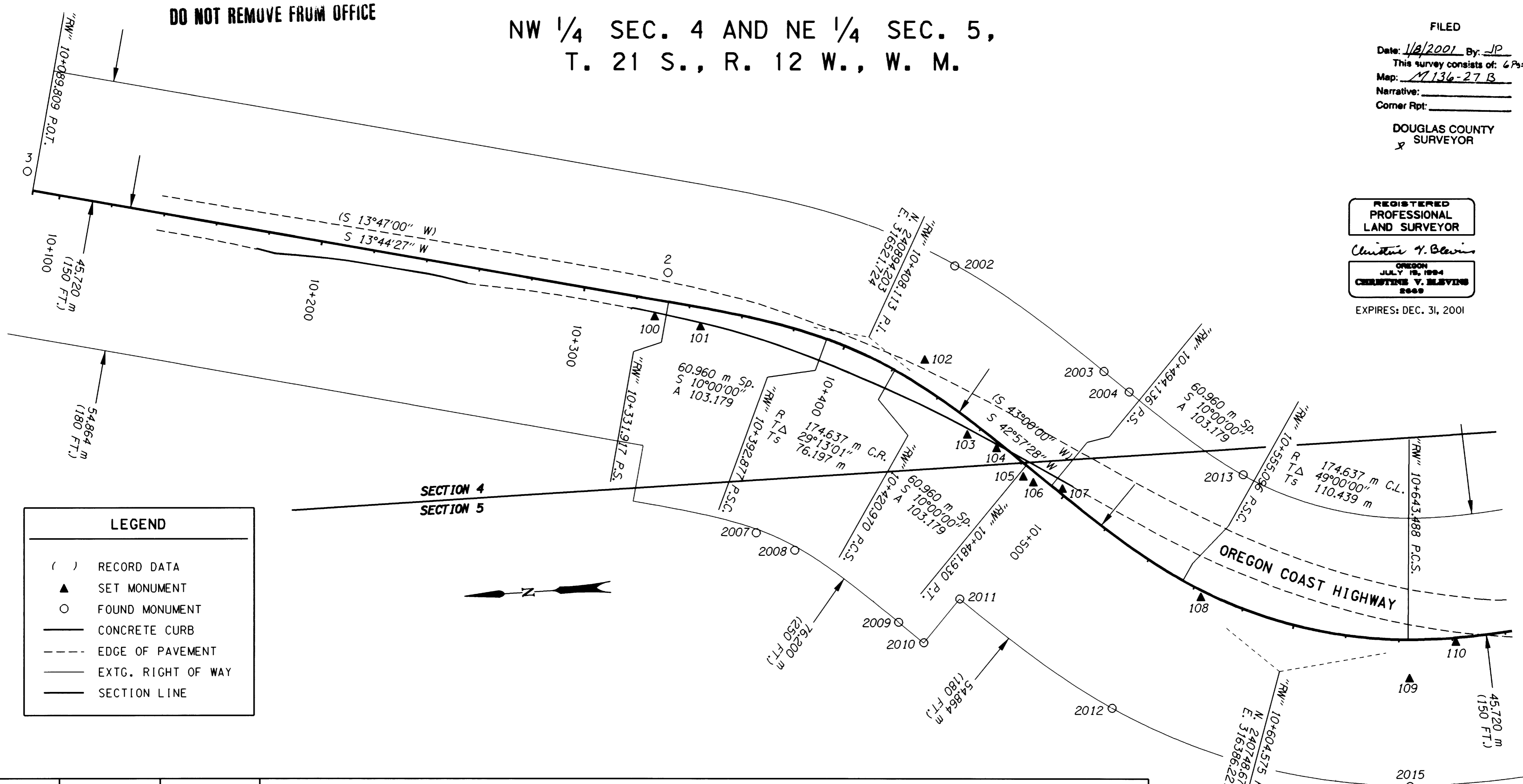
DOUGLAS COUNTY
SURVEYOR
X

REGISTERED
PROFESSIONAL
LAND SURVEYOR

Christine V. Blevins

OREGON
JULY 18, 1994
CHRISTINE V. BLEVINS
2000

EXPIRES: DEC. 31, 2001



LEGEND

- () RECORD DATA
- ▲ SET MONUMENT
- FOUND MONUMENT
- CONCRETE CURB
- - - EDGE OF PAVEMENT
- EXTG. RIGHT OF WAY
- SECTION LINE

POINT ID	LDP NORTHING	LDP EASTING	DESCRIPTION
2	240967.691	316550.923	FOUND 13 mm SQUARE IRON ROD WITH A 38 mm ALUM. CAP STAMPED "ODOT HORIZ. CONTROL 2" FLUSH WITH SURFACE IN GOOD CONDITION. ORANGE CARSONITE POST FOUND NEARBY. (REF. DOUGLAS COUNTY SURVEY *M129-38)
3	241204.948	316604.762	FOUND 13 mm SQUARE IRON ROD WITH A 38 mm ALUM. CAP STAMPED "ODOT HORIZ. CONTROL 3" FLUSH WITH SURFACE IN GOOD CONDITION. ORANGE CARSONITE WITNESS POST FOUND NEARBY. (REF. DOUGLAS COUNTY SURVEY *M129-38)
100	240973.724	316534.916	SET 16 mm X 762 mm IRON REBAR WITH A 38 mm BRASS CAP STAMPED "ODOT CONTROL 100" FLUSH WITH SURFACE.
101	240956.862	316530.020	SET 16 mm X 762 mm IRON REBAR WITH A 38 mm BRASS CAP STAMPED "ODOT CONTROL 101" FLUSH WITH SURFACE.
102	240873.820	316512.039	SET 16 mm X 762 mm IRON REBAR WITH A 38 mm ALUM. CAP STAMPED "ODOT HORIZ. CONTROL 102" FLUSH WITH SURFACE.
103	240859.685	316482.985	SET 16 mm X 762 mm IRON REBAR WITH A 38 mm BRASS CAP STAMPED "ODOT CONTROL 103" FLUSH WITH SURFACE.
104	240849.140	316477.152	SET 16 mm X 762 mm IRON REBAR WITH A 38 mm BRASS CAP STAMPED "ODOT CONTROL 104" FLUSH WITH SURFACE.
105	240839.804	316465.901	SET 16 mm X 762 mm IRON REBAR WITH A 38 mm BRASS CAP STAMPED "ODOT CONTROL 105" FLUSH WITH SURFACE.
106	240836.166	316463.447	SET 16 mm X 762 mm IRON REBAR WITH A 38 mm BRASS CAP STAMPED "ODOT CONTROL 106" FLUSH WITH SURFACE.
107	240825.425	316460.349	SET 16 mm X 762 mm IRON REBAR WITH A 38 mm BRASS CAP STAMPED "ODOT CONTROL 107" FLUSH WITH SURFACE.
108	240776.200	316416.237	SET 16 mm X 762 mm IRON REBAR WITH A 38 mm BRASS CAP STAMPED "ODOT CONTROL 108" FLUSH WITH SURFACE IN OLD ASPHALT CONC. ROAD BED.

METRIC SURVEY

SCALE 1:1000 METERS

0 25 50 100

1 METER = 3937 U.S. FEET / 1200
TO CONVERT A METRIC DISTANCE DIVIDE BY 0.30480061

OREGON DEPARTMENT OF TRANSPORTATION
HORIZONTAL CONTROL, RECOVERY,
AND RETRACEMENT MAP
ELBOW CREEK SLIDE
OREGON COAST HIGHWAY (HWY. 101)
DOUGLAS COUNTY
3500 STEWART PARKWAY, SUITE 140
ROSEBURG, OREGON 97470

MAP FILE M136-27B

MAP FILE M136-27B

DO NOT REMOVE FROM OFFICE

FILED
 Date: 1/8/2001 By: JP
 This survey consists of: 6 Pgs.
 Map: M136-27C
 Narrative: _____
 Corner Rpt: _____
 DOUGLAS COUNTY
 SURVEYOR
 JP

POINT ID	LDP NORTHING	LDP EASTING	STATION	OFFSET	DESCRIPTION
109	240700.059	316380.724			SET 16 mm X 762 mm IRON REBAR WITH A 38 mm BRASS CAP STAMPED "ODOT CONTROL 109" 150 mm BELOW SURFACE STABILIZED WITH CONC. APPROXIMATELY 300 mm DEEP.
110	240681.794	316393.301			SET 16 mm X 762 mm IRON REBAR WITH A 38 mm BRASS CAP STAMPED "ODOT CONTROL 110" FLUSH WITH SURFACE.
2002	240860.310	316546.491	10+421.281	45.384 LT.	FOUND 5/8" IRON ROD 200 mm ABOVE SURFACE IN FAIR CONDITION. 4" X 4" WOOD WITNESS POST NEARBY. (R/W STATION 341+89.45 P.C.S., 150 LT.)
2003	240807.045	316503.152	10+482.177	45.803 LT.	FOUND 5/8" IRON REBAR 100 mm BELOW SURFACE IN GOOD CONDITION. WITNESS POST NEARBY. (R/W STATION 343+89.45 P.T., 150 FT. LT.)
2004	240798.110	316494.874	10+494.357	45.833 LT.	FOUND 5/8" IRON REBAR FLUSH WITH SURFACE IN GOOD CONDITION. WITNESS POST NEARBY. (R/W STATION 344+29.50 P.S., 150 FT. LT.)
2007	240941.077	316450.986	10+393.139	77.460 RT.	FOUND 5/8" IRON ROD 200 mm ABOVE SURFACE IN GOOD CONDITION. 4" X 4" WOOD POST NEARBY. (R/W STATION 340+97.28 P.S.C., 250 FT. RT.)
2008	240927.117	316443.477	10+421.644	77.397 RT.	FOUND 5/8" IRON ROD 70 mm ABOVE SURFACE IN GOOD CONDITION. 4" X 4" WOOD WITNESS POST NEARBY. (R/W STATION 341+89.45 P.C.S., 250 FT. RT.)
2009	240890.033	316413.908	10+482.257	76.064 RT.	FOUND 5/8" IRON REBAR 100 mm BELOW SURFACE IN GOOD CONDITION. WITNESS POST NEARBY. (R/W STATION 343+89.45 P.T., 250 FT. RT.)
2010	240881.115	316405.618	10+494.433	76.054 RT.	FOUND 5/8" IRON REBAR 150 mm ABOVE SURFACE IN FAIR CONDITION. WITNESS POST NEARBY. (R/W STATION 344+29.50 P.S., 250 FT. RT.)
2011	240866.584	316421.191	10+494.455	54.754 RT.	FOUND 5/8" IRON REBAR 50 mm BELOW SURFACE IN GOOD CONDITION. WITNESS POST NEARBY. (R/W STATION 344+29.50 P.S., 180 FT. RT.)
2012	240812.202	316376.504	10+555.311	54.821 RT.	FOUND 5/8" IRON REBAR 100 mm BELOW SURFACE IN GOOD CONDITION. WITNESS POST NEARBY. (R/W STATION 346+29.50 P.S.C., 180 FT. RT.)
2013	240757.446	316461.065	10+555.399	45.921 LT.	FOUND 5/8" IRON REBAR 300 mm BELOW SURFACE IN FAIR CONDITION. (R/W STATION 346+29.50 P.S.C., 150 FT. LT.)
2015	240702.531	316339.906	10+644.202	55.131 RT.	FOUND 5/8" IRON REBAR 180 mm BELOW SURFACE IN GOOD CONDITION. (R/W STATION 349+19.50 P.C.S., 180 FT. RT.)

REMAINING MONUMENT DESCRIPTIONS FROM SHEET 4 OF 6

POINT ID	LDP NORTHING	LDP EASTING	STATION	OFFSET	DESCRIPTION
140	240264.684	316480.627			SET 16 mm X 762 mm IRON REBAR WITH A 38 mm BRASS CAP STAMPED "ODOT CONTROL 140" FLUSH WITH SURFACE.
2016	240632.319	316343.225	10+705.197	55.006 RT.	FOUND 5/8" IRON REBAR FLUSH WITH SURFACE IN GOOD CONDITION. WITNESS POST NEARBY. (R/W STATION 351+19.50 P.T., 180 FT. RT.)
2018	240635.084	316470.954			FOUND 2 3/8" IRON PIPE WITH A 3 1/4" BRASS DISK STAMPED "DEPT. OF THE INTERIOR LAND MANAGEMENT, UNLAWFUL TO DISTURB T2IS R12W 1981 1/4 S4 S5 " 100 mm ABOVE SURFACE IN GOOD CONDITION.
2021	240574.324	316318.746	10+760.293	85.454 RT.	FOUND 5/8" IRON ROD 100 mm BELOW SURFACE IN GOOD CONDITION. WITNESS POST LAYING BESIDE MONUMENT. (R/W STATION 353+00.00 P.O.S., 280 FT. RT.)
2022	240476.547	316329.186	10+858.624	85.364 RT.	FOUND 5/8" IRON REBAR FLUSH WITH SURFACE IN GOOD CONDITION. WITNESS POST NEARBY. (R/W STATION 356+23.00 P.S., 280 FT. RT.)
2023	240403.921	316338.063	10+927.874	85.343 RT.	FOUND 5/8" IRON REBAR FLUSH WITH SURFACE IN GOOD CONDITION. WITNESS POST NEARBY. (R/W STATION 358+50.00 P.O.S., 280 FT. RT.)
2024	240409.991	316377.242	10+927.790	45.696 RT.	FOUND 5/8" IRON REBAR 100 mm ABOVE SURFACE IN GOOD CONDITION. WITNESS POST NEARBY. (R/W STATION 358+50.00 P.O.S., 150 FT. RT.)
2025	240423.496	316466.763	10+927.943	44.837 LT.	FOUND 5/8" IRON ROD FLUSH WITH SURFACE IN FAIR CONDITION. WITNESS POST NEARBY. (R/W STATION 358+50.00 P.O.S., 150 FT. LT.)
2029	240279.696	316508.280	11+095.283	36.539 LT.	FOUND 5/8" IRON ROD 160 mm ABOVE SURFACE IN GOOD CONDITION. WITNESS POST LAYING BESIDE MONUMENT. (R/W STATION 364+00.00, 120 FT. LT.)
2030	240321.382	316397.774	11+010.905	45.765 RT.	FOUND 5/8" IRON ROD 60 mm BELOW SURFACE, BENT TO THE EAST IN POOR CONDITION. TIED WHERE ROD ENTERS GROUND. (R/W STATION 361+23.00 P.S.C., 150 FT. RT.)
2043	240235.448	316438.814	11+095.303	45.822 RT.	FOUND 5/8" IRON ROD 60 mm BELOW SURFACE IN GOOD CONDITION. WITNESS POST NEARBY. (R/W STATION 364+00.00, 150 FT. RT.)
2048	240490.417	316459.497	10+858.550	45.684 LT.	FOUND 5/8" IRON REBAR 100 mm BELOW SURFACE IN GOOD CONDITION. WITNESS POST NEARBY. (R/W STATION 356+23.00 P.S., 150 FT. LT.)

REGISTERED
 PROFESSIONAL
 LAND SURVEYOR
Christine V. Blavin
 OREGON
 JULY 19, 1994
 CHRISTINE V. BLAVIN
 2649
 EXPIRES: DEC. 31, 2001



1 METER = 3937 U.S. FEET / 1200
 TO CONVERT A METRIC DISTANCE DIVIDE BY 0.30480061

OREGON DEPARTMENT OF TRANSPORTATION
 HORIZONTAL CONTROL, RECOVERY,
 AND RETRACEMENT MAP
 ELBOW CREEK SLIDE
 OREGON COAST HIGHWAY (HWY. 101)
 DOUGLAS COUNTY
 3500 STEWART PARKWAY, SUITE 140
 ROSEBURG, OREGON 97470

JANUARY 2, 2001
 PROJECT KEY *10846

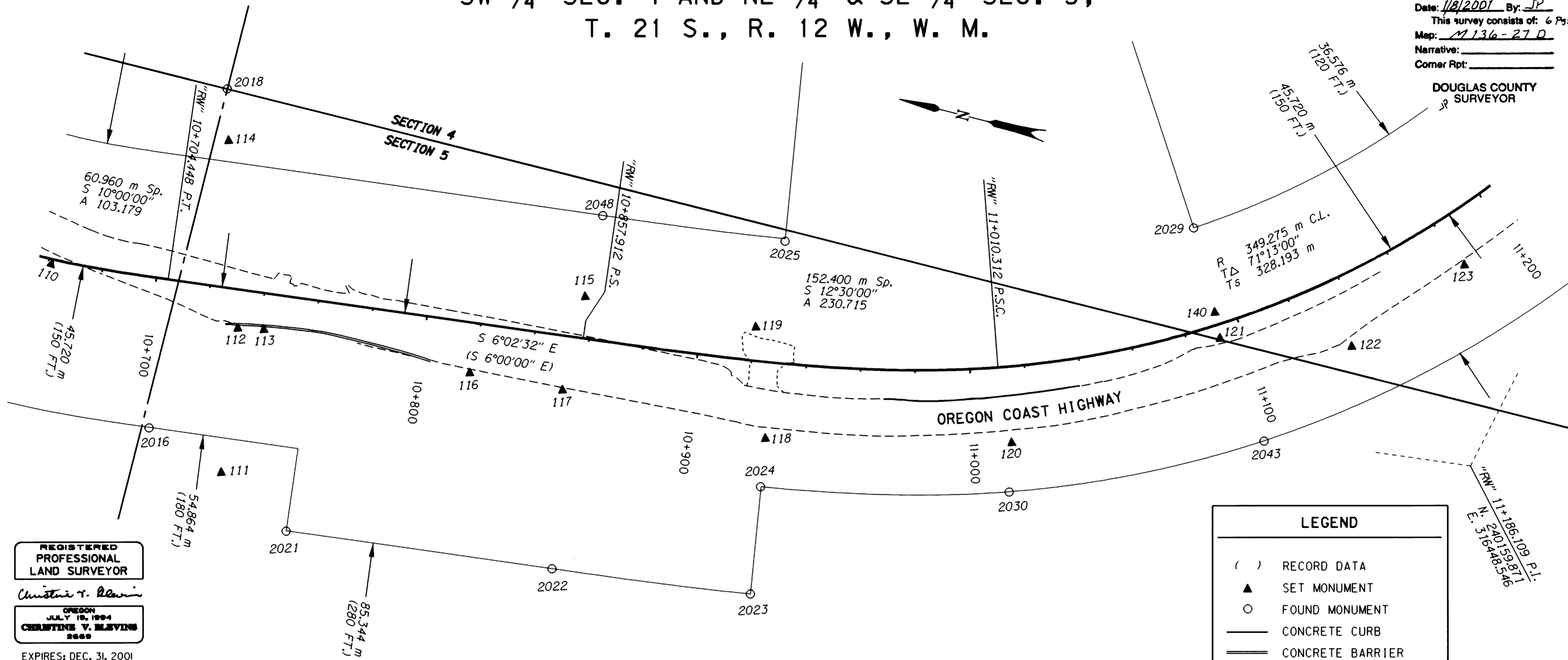
MAP FILE M136-27C

MAP FILE M136-27C

SW 1/4 SEC. 4 AND NE 1/4 & SE 1/4 SEC. 5,
T. 21 S., R. 12 W., W. M.

FILED
Date: 1/8/2001 By: JP
This survey consists of: 6 Pgs.
Map: M136-27 D
Narrative:
Corner Rpt:

DOUGLAS COUNTY
SURVEYOR



REGISTERED
PROFESSIONAL
LAND SURVEYOR

Christine V. Blavin

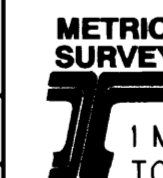
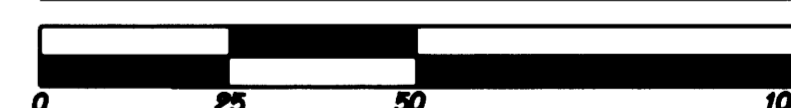
OREGON
JULY 19, 1994
CHRISTINE V. BLEVINS
2689

EXPIRES: DEC. 31, 2001

LEGEND

- () RECORD DATA
- ▲ SET MONUMENT
- FOUND MONUMENT
- CONCRETE CURB
- CONCRETE BARRIER
- - - EDGE OF PAVEMENT
- - - - EDGE OF GRAVEL
- EXTG. RIGHT OF WAY
- SECTION LINE
- - - QUARTER SECTION LINE

SCALE 1:1000 METERS



1 METER = 3937 U.S. FEET / 1200
TO CONVERT A METRIC DISTANCE DIVIDE BY 0.30480061

POINT ID	LDP NORTHING	LDP EASTING	DESCRIPTION
111	240602.732	316334.209	SET 457 mm LONG WOOD HUB AND TACK, FLUSH WITH SURFACE.
112	240609.852	316387.053	SET 16 mm X 762 mm IRON REBAR WITH A 38 mm ALUM. CAP STAMPED "ODOT HORIZ. CONTROL 112" FLUSH WITH SURFACE.
113	240600.490	316388.845	SET 16 mm X 762 mm IRON REBAR WITH A 38 mm ALUM. CAP STAMPED "ODOT HORIZ. CONTROL 113" FLUSH WITH SURFACE.
114	240630.008	316452.997	SET 16 mm X 762 mm IRON REBAR WITH A 38 mm ALUM. CAP STAMPED "ODOT HORIZ. CONTROL 114" FLUSH WITH SURFACE.
115	240489.456	316429.522	SET 16 mm X 762 mm IRON REBAR WITH A 38 mm ALUM. CAP STAMPED "ODOT HORIZ. CONTROL 115" FLUSH WITH ASPHALT CONC. SURFACE OF OLD ROAD BED.
116	240523.532	316391.927	SET 16 mm X 762 mm IRON REBAR WITH A 38 mm BRASS CAP STAMPED "ODOT CONTROL 116" FLUSH WITH SURFACE.
117	240489.072	316394.116	SET 16 mm X 507 mm IRON REBAR WITH A 38 mm BRASS CAP STAMPED "ODOT CONTROL 117" FLUSH WITH SURFACE.
118	240412.811	316395.239	SET 16 mm X 762 mm IRON REBAR WITH A 38 mm BRASS CAP STAMPED "ODOT CONTROL 118" 30 mm ABOVE SURFACE STABILIZED WITH CONC. APPROXIMATELY 300 mm DEEP.
119	240426.193	316433.981	SET 16 mm X 762 mm IRON REBAR WITH A 38 mm ALUM. CAP STAMPED "ODOT HORIZ. CONTROL 119" FLUSH WITH SURFACE.
120	240325.036	316415.928	SET 16 mm X 762 mm IRON REBAR WITH A 38 mm BRASS CAP STAMPED "ODOT CONTROL 120" FLUSH WITH SURFACE.
121	240260.462	316471.808	SET 16 mm X 587 mm IRON REBAR WITH A 38 mm ALUM. CAP STAMPED "ODOT HORIZ. CONTROL 121" FLUSH WITH SURFACE.
122	240212.938	316480.766	SET 16 mm X 762 mm IRON REBAR WITH A 38 mm BRASS CAP STAMPED "ODOT CONTROL 122" FLUSH WITH SURFACE STABILIZED WITH CONC. APPROXIMATELY 300 mm DEEP.
123	240180.268	316519.886	SET 16 mm X 762 mm IRON REBAR WITH A 38 mm BRASS CAP STAMPED "ODOT CONTROL 123" FLUSH WITH SURFACE BEHIND GUARDRAIL.

NOTE: SEE SHEET 3 OF 6 FOR REMAINING MONUMENT DESCRIPTIONS

OREGON DEPARTMENT OF TRANSPORTATION
HORIZONTAL CONTROL, RECOVERY,
AND RETRACEMENT MAP
ELBOW CREEK SLIDE
OREGON COAST HIGHWAY (HWY. 101)
DOUGLAS COUNTY
3500 STEWART PARKWAY, SUITE 140
ROSEBURG, OREGON 97470

JANUARY 2, 2001
PROJECT KEY #10846

SHEET 4 OF 6

MAP FILE M136-27 D

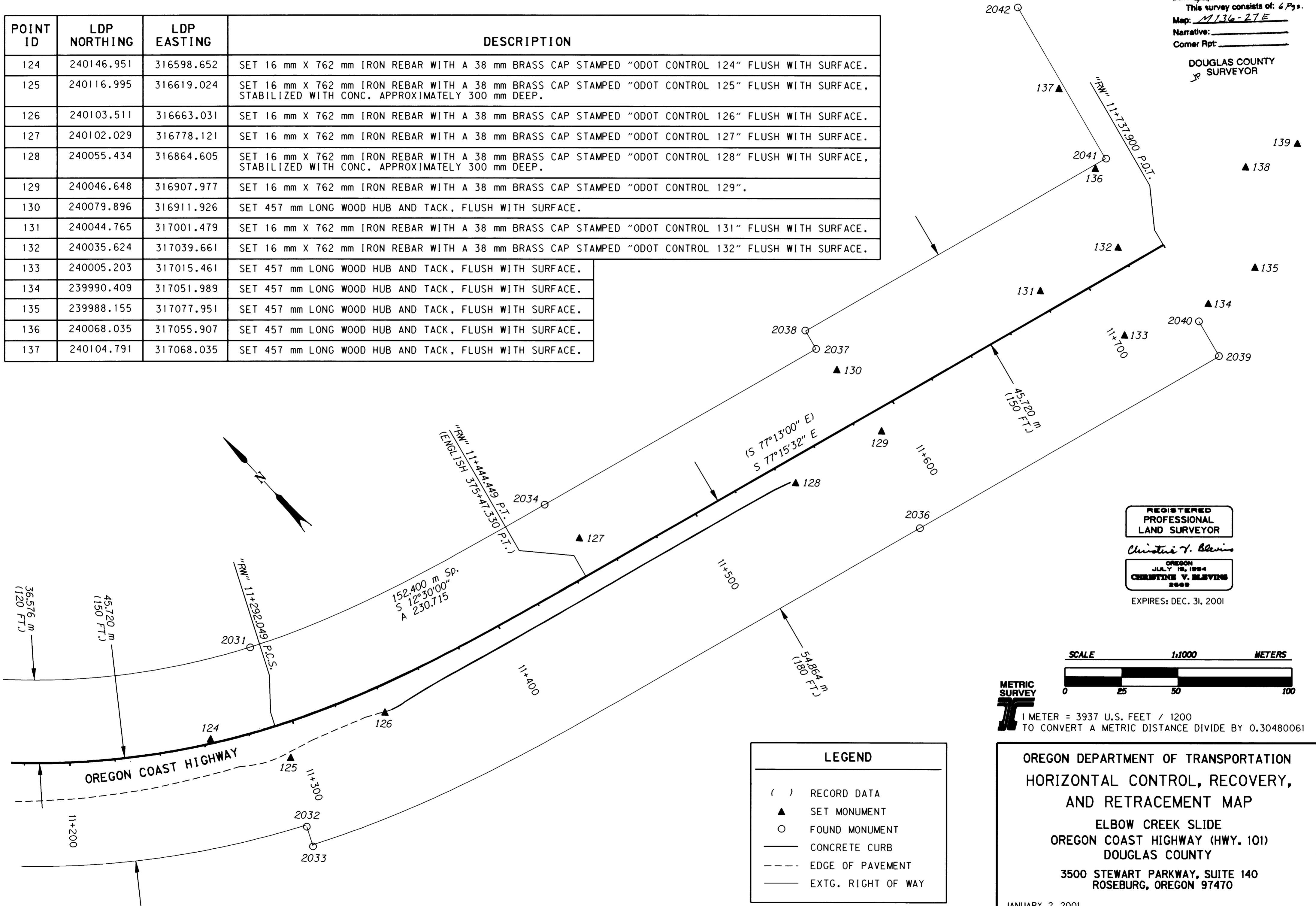
MAP FILE M136-27 D

SW 1/4 SEC. 4, T. 21 S., R. 12 W., W. M.

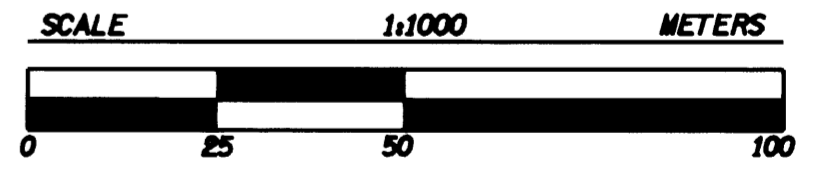
FILED
Date: 1/9/2001 By: JP
This survey consists of: 6 Pgs.
Map: M136-27E
Narrative: _____
Corner Rpt: _____

DOUGLAS COUNTY
SURVEYOR

POINT ID	LDP NORTHING	LDP EASTING	DESCRIPTION
124	240146.951	316598.652	SET 16 mm X 762 mm IRON REBAR WITH A 38 mm BRASS CAP STAMPED "ODOT CONTROL 124" FLUSH WITH SURFACE.
125	240116.995	316619.024	SET 16 mm X 762 mm IRON REBAR WITH A 38 mm BRASS CAP STAMPED "ODOT CONTROL 125" FLUSH WITH SURFACE, STABILIZED WITH CONC. APPROXIMATELY 300 mm DEEP.
126	240103.511	316663.031	SET 16 mm X 762 mm IRON REBAR WITH A 38 mm BRASS CAP STAMPED "ODOT CONTROL 126" FLUSH WITH SURFACE.
127	240102.029	316778.121	SET 16 mm X 762 mm IRON REBAR WITH A 38 mm BRASS CAP STAMPED "ODOT CONTROL 127" FLUSH WITH SURFACE.
128	240055.434	316864.605	SET 16 mm X 762 mm IRON REBAR WITH A 38 mm BRASS CAP STAMPED "ODOT CONTROL 128" FLUSH WITH SURFACE, STABILIZED WITH CONC. APPROXIMATELY 300 mm DEEP.
129	240046.648	316907.977	SET 16 mm X 762 mm IRON REBAR WITH A 38 mm BRASS CAP STAMPED "ODOT CONTROL 129".
130	240079.896	316911.926	SET 457 mm LONG WOOD HUB AND TACK, FLUSH WITH SURFACE.
131	240044.765	317001.479	SET 16 mm X 762 mm IRON REBAR WITH A 38 mm BRASS CAP STAMPED "ODOT CONTROL 131" FLUSH WITH SURFACE.
132	240035.624	317039.661	SET 16 mm X 762 mm IRON REBAR WITH A 38 mm BRASS CAP STAMPED "ODOT CONTROL 132" FLUSH WITH SURFACE.
133	240005.203	317015.461	SET 457 mm LONG WOOD HUB AND TACK, FLUSH WITH SURFACE.
134	239990.409	317051.989	SET 457 mm LONG WOOD HUB AND TACK, FLUSH WITH SURFACE.
135	239988.155	317077.951	SET 457 mm LONG WOOD HUB AND TACK, FLUSH WITH SURFACE.
136	240068.035	317055.907	SET 457 mm LONG WOOD HUB AND TACK, FLUSH WITH SURFACE.
137	240104.791	317068.035	SET 457 mm LONG WOOD HUB AND TACK, FLUSH WITH SURFACE.



REGISTERED
PROFESSIONAL
LAND SURVEYOR
Christine V. Blevins
OREGON
JULY 19, 1994
CHRISTINE V. BLEVINS
2669
EXPIRES: DEC. 31, 2001



METRIC SURVEY
1 METER = 3937 U.S. FEET / 1200
TO CONVERT A METRIC DISTANCE DIVIDE BY 0.30480061

LEGEND

()	RECORD DATA
▲	SET MONUMENT
○	FOUND MONUMENT
—	CONCRETE CURB
- - -	EDGE OF PAVEMENT
—	EXTG. RIGHT OF WAY

OREGON DEPARTMENT OF TRANSPORTATION
HORIZONTAL CONTROL, RECOVERY,
AND RETRACEMENT MAP
ELBOW CREEK SLIDE
OREGON COAST HIGHWAY (HWY. 101)
DOUGLAS COUNTY
3500 STEWART PARKWAY, SUITE 140
ROSEBURG, OREGON 97470
JANUARY 2, 2001
PROJECT KEY *10846
SHEET 5 OF 6

**COUNTY SURVEYORS FILE DATA
DO NOT REMOVE FROM OFFICE**

FILED
Date: 1/8/2001 By: JP
This survey consists of: 6 Pgs.
Map: M136-27 F
Narrative: _____
Corner Rpt: _____

DOUGLAS COUNTY
SURVEYOR
ⓧ

POINT ID	LDP NORTHING	LDP EASTING	STATION	OFFSET	DESCRIPTION
138	240023.572	317104.990			SET 16 mm X 762 mm IRON REBAR WITH A 38 mm ALUM. CAP STAMPED "ODOT HORIZ. CONTROL 138" SET FLUSH IN PAVEMENT.
139	240015.732	317128.794			SET RAILROAD SPIKE FLUSH WITH PAVEMENT, STAMPED "139".
2031	240164.703	316638.723	11+292.067	36.478 LT.	FOUND 1/2" IRON REBAR FLUSH WITH SURFACE IN GOOD CONDITION. WITNESS POST NEARBY. (R/W STATION 370+47.33 P.C.S., 120 FT. LT.)
2032	240089.679	316603.409	11+292.108	46.441 RT.	FOUND 1/2" IRON REBAR FLUSH WITH SURFACE IN GOOD CONDITION. WITNESS POST NEARBY. (R/W STATION 370+47.33 P.C.S., 150 FT. RT.)
2033	240081.386	316599.520	11+292.122	55.601 RT.	FOUND 1/2" IRON REBAR 60 mm ABOVE SURFACE IN GOOD CONDITION. WITNESS POST NEARBY. (R/W STATION 370+47.33 P.C.S., 180 FT. RT.)
2034	240123.113	316776.747	11+444.482	36.530 LT.	FOUND 1/2" IRON REBAR FLUSH WITH SURFACE IN GOOD CONDITION. WITNESS POST NEARBY. (EQUATION STATION 375+47.33 P.T. AH.= "CONSTR" 375+53.22 P.O.T. BK., 120 FT. LT.)
2036	240003.540	316891.155	11+582.444	54.866 RT.	FOUND 1/2" IRON REBAR 50 mm BELOW SURFACE IN GOOD CONDITION. WITNESS POST NEARBY. (R/W STATION 380+00 P.O.T., 180 FT. RT.)
2037	240092.738	316911.302	11+582.423	36.578 LT.	FOUND 1/2" IRON REBAR 50 mm BELOW SURFACE IN GOOD CONDITION. WITNESS POST NEARBY. (R/W STATION 380+00 P.O.T., 120 FT. LT.)
2038	240101.986	316913.289	11+582.321	46.037 LT.	FOUND 1/2" IRON REBAR 50 mm ABOVE SURFACE IN GOOD CONDITION. WITNESS POST NEARBY. (R/W STATION 380+00 P.O.T., 150 FT. LT.)
2039	239970.092	317039.634	11+734.644	54.745 RT.	FOUND 1/2" IRON REBAR 400 mm ABOVE SURFACE IN POOR CONDITION. TIED WHERE ROD ENTERS GROUND. ROD IS LOOSE AND BENT. WITNESS POST NEARBY. (R/W STATION 385+00 P.O.T., 180 FT. RT.)
2040	239987.341	317043.538	11+734.647	37.060 RT.	FOUND 1/2" IRON REBAR 300 mm ABOVE SURFACE IN POOR CONDITION. REBAR ROD IS VERY LOOSE IN GROUND. TIED WHERE REBAR ENTERS GROUND. WITNESS POST IS DOWN BESIDE MONUMENT. (R/W STATION 385+00 P.O.T., 120 FT. RT.)
2041	240067.885	317062.215	11+735.101	45.620 LT.	FOUND 1/2" IRON REBAR 130 mm ABOVE SURFACE IN FAIR CONDITION. (R/W STATION 385+00 P.O.T., 150 FT. LT.)
2042	240143.314	317078.918	11+734.757	122.876 LT.	FOUND 1/2" IRON REBAR 250 mm BELOW SURFACE IN GOOD CONDITION. WITNESS POST NEARBY. (R/W STATION 385+00 P.O.T., 400 FT. LT.)

REGISTERED
PROFESSIONAL
LAND SURVEYOR

Christine V. Blavin

OREGON
JULY 19, 1994
CHRISTINE V. BLAVIN
2049

EXPIRES: DEC. 31, 2001



1 METER = 3937 U.S. FEET / 1200
TO CONVERT A METRIC DISTANCE DIVIDE BY 0.30480061

OREGON DEPARTMENT OF TRANSPORTATION
HORIZONTAL CONTROL, RECOVERY,
AND RETRACEMENT MAP
ELBOW CREEK SLIDE
OREGON COAST HIGHWAY (HWY. 101)
DOUGLAS COUNTY
3500 STEWART PARKWAY, SUITE 140
ROSEBURG, OREGON 97470

JANUARY 2, 2001
PROJECT KEY #10846

SHEET 6 OF 6

ST. HWY. 101-005F

MAP FILE M136-27F

MAP FILE M136-27F