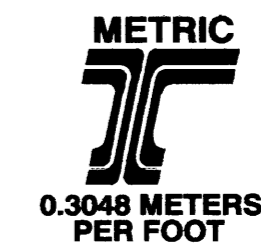


COUNTY SURVEYORS FILE DATA
DO NOT REMOVE FROM OFFICE

A PORTION OF THE EAST HALF OF SECTION 13 T.22 S., R.13 W. W.M. DOUGLAS COUNTY, OR.

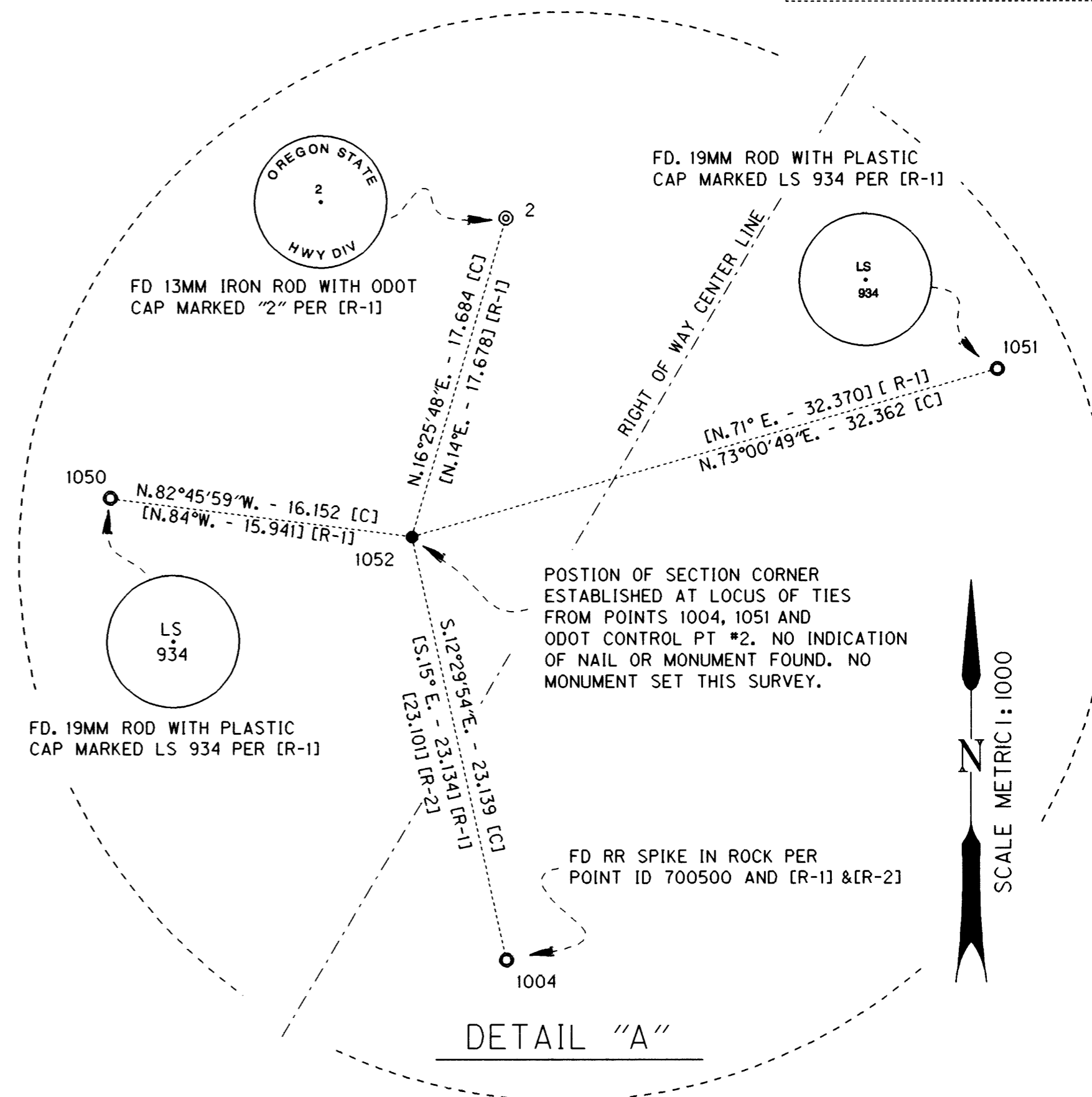


FILED
Date: 11-8-1999 By: JP
This survey consists of: 3 SHEETS
Map: M133-47B
Narrative: _____
Corner Rpt: _____
DOUGLAS COUNTY
SURVEYOR

MAP FILE M133-47B

MINUS OFFSETS INDICATE LEFT AND POSITIVES ARE RIGHT OF CENTERLINE
COORDINATE NOTE: ALL COORDINATES SHOWN HEREON ARE LOCAL DATUM PLANE GROUND VALUES WITH NO CONVERSION TO GRID

POINT	STATION	OFFSET	NORTHING	EASTING	DESCRIPTION
2	6+774.508	12.019	228914.0585	1202988.5517	13 MM SQ. IRON ROD WITH ALUMINUM ODOT CONTROL CAP
3	7+204.509	-7.413	228534.4449	1202785.6437	13 MM SQ. IRON ROD WITH ALUMINUM ODOT CONTROL CAP
6	7+417.696	18.607	228356.0682	1202662.5488	13 MM SQ. IRON ROD WITH ALUMINUM ODOT CONTROL CAP
7	7+689.257	19.203	228082.1964	1202628.7688	13 MM SQ. IRON ROD WITH ALUMINUM ODOT CONTROL CAP (DAMAGED)
501	6+732.425	0.000	228944.1004	1203020.3781	COMPUTED CENTERLINE POSITION PER ODOT R/W MAP
502	7+254.155	0.000	228495.5480	1202753.9148	COMPUTED CENTERLINE POSITION PER ODOT R/W MAP
503	7+406.555	0.000	228360.4036	1202683.9224	COMPUTED CENTERLINE POSITION PER ODOT R/W MAP
504	7+470.118	0.000	228299.5246	1202665.8410	COMPUTED CENTERLINE POSITION PER ODOT R/W MAP
505	7+622.518	0.000	228148.0843	1202650.7165	COMPUTED CENTERLINE POSITION PER ODOT R/W MAP
506	7+725.760	0.000	228044.9309	1202646.4457	COMPUTED CENTERLINE POSITION PER ODOT R/W MAP
1000	6+732.722	45.673	228967.1722	1202980.9592	FD. 16 MM IRON ROD AT POINT INDICATED ON SHEET 3
	6+732.425PT	45.720			RECORD STATION AND OFFSET PER [R-4]
1001	6+732.713	-45.742	228920.4910	1203059.5570	FD. 16 MM IRON ROD AT POINT INDICATED ON SHEET 3
	6+732.425PT	-45.720			RECORD STATION AND OFFSET PER [R-4]
1002	7+193.280	45.720	228571.2350	1202745.6980	FD. 16 MM IRON ROD AT POINT INDICATED ON SHEET 3
1004	6+808.510	-8.187	228874.5055	1202988.5575	FD. RR SPIKE IN ROCK AT POINT INDICATED HEREON
1018	7+528.953	18.291	228243.3999	1202638.4486	FD. 78 MM DISK DCSO 101-8 CONTROL POINT TIED BUT NOT USED
1050	6+798.080	22.471	228899.1303	1202967.5269	FD. 19 MM ROD WITH CAP LS 934 AT POINT INDICATED HEREON
1051	6+768.094	-14.538	228906.0092	1203014.6600	FD. 19 MM ROD WITH CAP LS 934 AT POINT INDICATED HEREON
1052	6+791.645	7.656	228897.0966	1202983.5499	POSITION OF SECTION CORNER FROM [R-1] & [R-2] AS SHOWN HEREON
1053	7+406.495	-91.442	228328.1068	1202769.4712	FD. 16 MM IRON ROD AT POINT INDICATED ON SHEET 3
	7+406.555PS	-91.440			RECORD STATION AND OFFSET PER [R-3]
1054	7+437.079	-45.713	228318.3566	1202717.9165	FD. 16 MM IRON ROD AT POINT INDICATED ON SHEET 3
	7+437.120	-45.720			RECORD STATION AND OFFSET PER [R-3]
1055	7+470.043	-45.724	228289.7948	1202710.5181	FD. 16 MM IRON ROD AT POINT INDICATED ON SHEET 3
	7+470.118PC	-45.720			RECORD STATION AND OFFSET PER [R-3]
1056	7+406.507	45.699	228376.6156	1202641.1959	FD. 16 MM IRON ROD AT POINT INDICATED ON SHEET 3
	4+406.555PS	45.720			RECORD STATION AND OFFSET PER [R-3]
3000	7+193.280	-97.536	228498.0698	1202868.8610	SET 16 MM IRON ROD AND ODOT R/W CAP AS SHOWN ON SHEET. 3
3001	7+254.240	-97.536	228445.6600	1202837.7269	SET 16 MM IRON ROD AND ODOT R/W CAP AS SHOWN ON SHEET. 3
3002	7+274.662	-121.920	228415.9696	1202848.4757	SET 16 MM IRON ROD AND ODOT R/W CAP AS SHOWN ON SHEET. 3
3003	7+391.400	-121.920	228327.6282	1202802.0749	SET 16 MM IRON ROD AND ODOT R/W CAP AS SHOWN ON SHEET. 3
3004	7+406.555	-97.536	228325.9072	1202775.1543	SET 16 MM IRON ROD AND ODOT R/W CAP AS SHOWN ON SHEET. 3
3005	7+437.120	-97.536	228303.4288	1202767.5428	SET 16 MM IRON ROD AND ODOT R/W CAP AS SHOWN ON SHEET. 3
3006	7+345.680	-124.968	228358.9708	1202820.0816	SET 16 MM IRON ROD AND ODOT R/W CAP AS SHOWN ON SHEET. 3
3007	7+193.280	-45.720	228524.5338	1202824.3127	COMPUTED POINT AS SHOWN NOTHING SET



- LEGEND**
- [C] INDICATES COMPUTED DATA
 - [R] INDICATES RECORD DATA
 - [M] MEASURED THIS SURVEY
 - [] EMBRACES RECORD DATA
 - COMPUTED POINT ONLY
 - ▲ SET CONTROL POINT
 - ⊙ FOUND MONUMENT NOTED IN LIST
 - SET R/W MONUMENT NOTED IN LIST
 - [R-1] CS M 128-75
 - [R-2] CS 58-152
 - [R-3] ODOT 7B-7-12
 - [R-4] ODOT 7B-7-13

REGISTERED PROFESSIONAL LAND SURVEYOR
Edward K. Hall
OREGON
JANUARY 16, 1996
EDWARD K. HALL
2741
EXPIRES
30 JUNE 2001

REVISED 19 OCT 1999

OREGON DEPARTMENT OF TRANSPORTATION
R/W MONUMENTATION AND CONTROL MAP
WINCHESTER HILL
SLIDE REPAIR PROJECT
O.D.O.T. CREW 3811 COQUILLE
307 HWY. 42E COQUILLE, OR. 97423
O.D.O.T. KEY NO. 08936 1 OCT 1999 SHEET 2 OF 3

ST. HWY. 101-004B

MAP FILE M133-47B