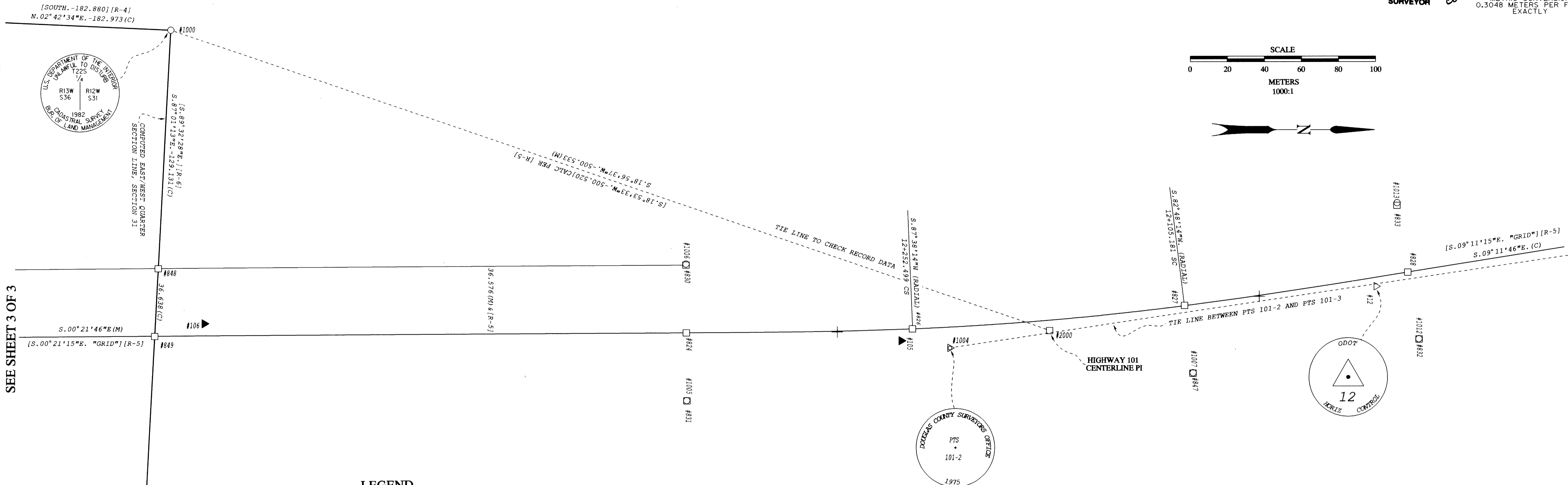
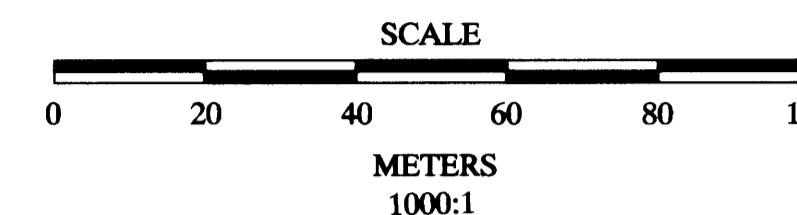


SE 1/4, Sec. 36, T.22 S., R.13 W., W.M.
W 1/2, Sec. 31, T.22 S., R.12 W., W.M.

FILED
Date: 4/13/1998 By: JP
This survey consists of: 3 SHEETS
Map: M124-778
Narrative:
Corner Ppt:
J.C. DOUGLAS COUNTY SURVEYOR



SEE SHEET 3 OF 3

SEE SHEET 1 OF 3

LEGEND

- (C) INDICATES COMPUTED DATA
- (R) INDICATES RECORD DATA
- (M) MEASURED THIS SURVEY
- [] EMBRACES RECORD DATA
- ▲ SET CONTROL POINT
- △ FOUND DCSO MONUMENT USED AS CONTROL POINT
- COMPUTED POINT AS DESCRIBED
- △ FOUND ODOT CONTROL POSITION AS DESCRIBED
- RIGHT-OF-WAY
- - - EDGE OF PAVEMENT
- FOUND MONUMENT NOTED IN LIST

CENTERLINE TABLE

POINT	STATION	BEARING	DISTANCE	RADIUS	DELTA	LENGTH	SPIRAL L	SPIRAL A	SPIRAL CHORD	REMARKS
		S.09°11'46"E.								TANGENT INTO CURVE
#828	11+983.261	PS					121.920	02°00'00"	S.08°31'46"E. -121.913	FIELD MEASURED CURVE MATCHES RECORD CURVE PER [R-5] ODOT 7B-11-17. THIS IS A 1° CURVE WITH A TOTAL TAN OF 195.872 METERS AND TOTAL DELTA OF 08°50'00".
#827	12+105.181	SC		1746.375	04°50'00"	147.319				
#826	12+252.499	CS					121.920	02°00'00"	S.01°01'46"E. -121.913	
#824	12+374.419	PT	S.00°21'46"E.	286.179						INTERSECTION WITH E/W 1/4 SEC LINE
#848	12+660.598	POT	S.00°21'46"E.	754.043						INTERSECTION WITH COUNTY LINE
#841	13+414.641	POT								

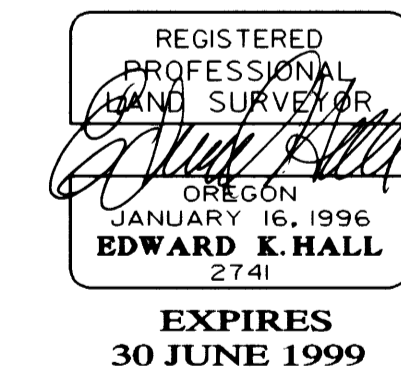
LOCAL DATUM PLANE COORDINATE TABLE FOR SHEET No.2

POINT No.	STATION	OFFSET*	NORTHING	EASTING	POINT DESCRIPTION
12	12+001.264	-4.846	223993.710	1203042.250	Fd 16mm Rod & Cap
800			222938.314	1202884.207	CALC POINT
811			222937.744	1202896.386	CALC POINT
819			222854.860	1203161.858	CALC POINT
820			222854.212	1203147.388	CALC POINT
824	12+374.419	0.000	223621.490	1203067.136	12+374.419 ST
826	12+252.499	0.000	223743.384	1203064.946	12+252.499 CS
827	12+105.181	0.000	223890.146	1203052.675	12+105.181 SC
828	11+983.261	0.000	224010.711	1203034.593	11+983.261 TS
830	12+374.419	36.576	223621.258	1203030.561	R/W POINT (CALC)
831	12+374.419	-36.576	223621.722	1203103.712	R/W POINT (CALC)
832	11+983.261	-36.576	224016.557	1203070.699	R/W POINT (CALC)
833	11+983.261	36.576	224004.866	1202998.487	R/W POINT (CALC)
847	12+105.181	-36.576	223894.728	1203088.963	CALC POINT
848	12+658.462	36.576	223337.221	1203032.360	CALC POINT
849	12+660.598	0.000	223335.317	1203068.949	CALC POINT
1000			223343.934	1202903.403	Fd 77mm cap w. 1/4 cor
1001			222845.320	1203146.492	Fd 20mm IRON ROD
1002	13+143.390	-44.178	222852.815	1203116.183	Fd 20mm IRON ROD
1004	12+232.880	-11.186	223763.568	1203075.197	Fd 70mm BRASS DISC BY D.C.S.O.
1005	12+374.362	-36.676	223621.780	1203103.811	Fd 20mm IRON ROD
1006	12+374.391	37.100	223621.283	1203030.037	Fd 32mm IRON PIPE
1007	12+105.138	-36.429	223894.753	1203088.811	Fd 20mm IRON ROD
1009			222938.348	1202883.489	Fd 20mm IRON PIPE
1012	11+983.256	-36.335	224016.523	1203070.461	Fd 20mm IRON ROD
1013	11+983.186	37.925	224004.724	1202997.144	Fd 16mm IRON ROD
1018	13+173.849	-43.728	222822.353	1203115.926	Fd 16mm IRON ROD
2000	12+178.840	-5.557	223817.358	1203065.896	HIGHWAY CENTERLINE PI
105	12+258.860	-6.148	223737.259	1203071.340	SET 16mm Rod & Cap
106	12+633.888	6.487	223361.985	1203062.292	SET 16mm Rod & Cap

(* OFFSETS TO THE LEFT ARE INDICATED AS MINUS)

RECORD LEGEND

- [R-1] = CS 51/267-3
- [R-2] = CS 51/276-2
- [R-3] = CS 55/38-4
- [R-4] = CS 58/121-3
- [R-5] = ODOT R/W MAP 7B-II-17
- [R-6] = M 109-50
- [R-7] = CS 55/194-1



EDITED EKH 19 FEB 1998

OREGON DEPARTMENT OF TRANSPORTATION
MONUMENT RECOVERY AND CONTROL MAP
COUNTY LINE SLIDE

O.D.O.T. CREW 3811 COQUILLE
307 HWY. 42E COQUILLE, OR. 97423

O.D.O.T. KEY NO. 09807

SHEET 2 OF 3