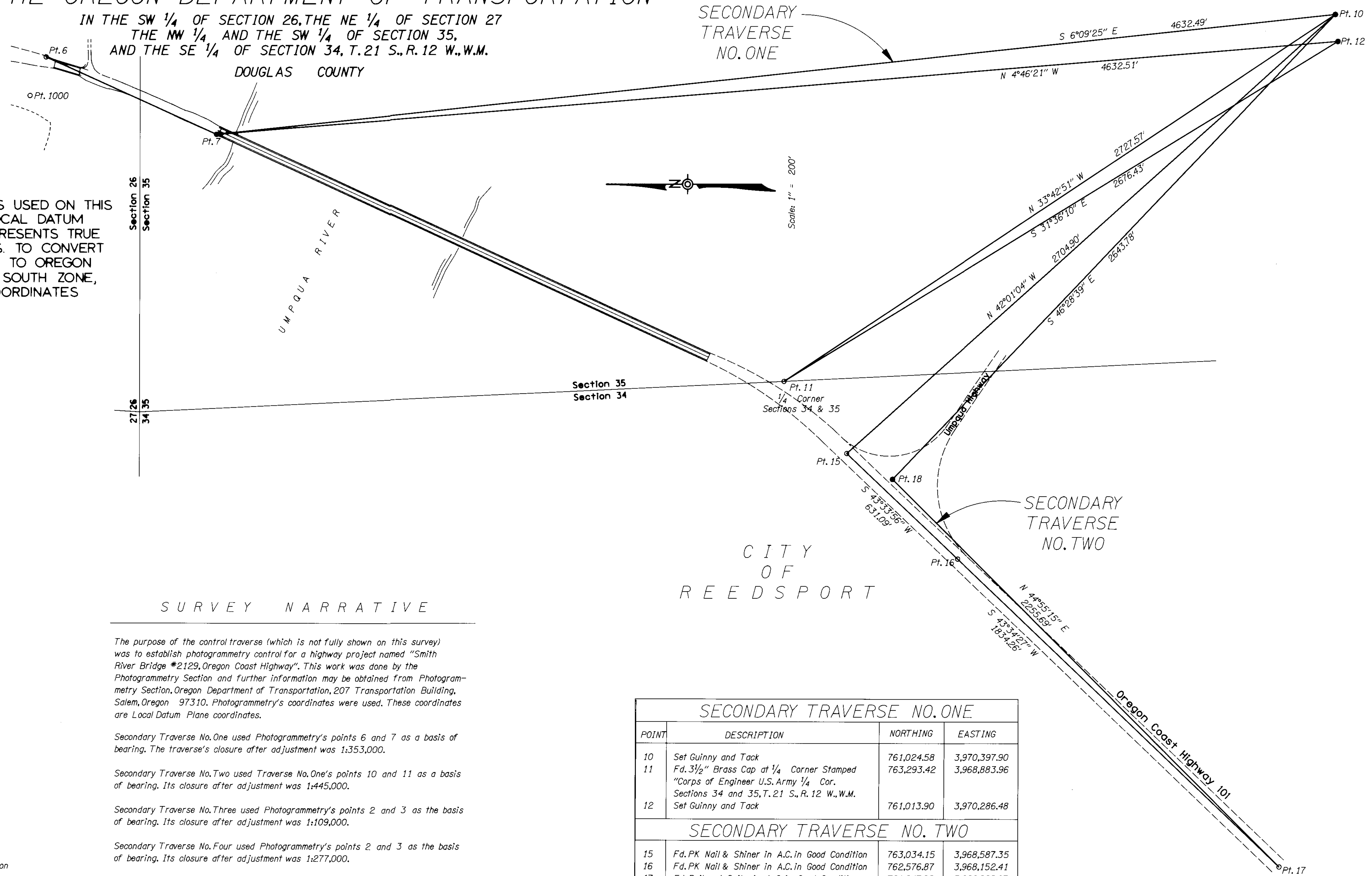


# LOCATION HORIZONTAL CONTROL SURVEY AND RECOVERY MAP

## FOR THE OREGON DEPARTMENT OF TRANSPORTATION

IN THE SW 1/4 OF SECTION 26, THE NE 1/4 OF SECTION 27  
THE NW 1/4 AND THE SW 1/4 OF SECTION 35,  
AND THE SE 1/4 OF SECTION 34, T.21 S., R. 12 W., W.M.



NOTE: COORDINATES USED ON THIS MAP ARE ON A LOCAL DATUM PLANE WHICH REPRESENTS TRUE GROUND DISTANCES. TO CONVERT L.D.P. COORDINATES TO OREGON STATE GRID, NAD83, SOUTH ZONE, MULTIPLY L.D.P. COORDINATES BY 0.99993913.

### SURVEY NARRATIVE

The purpose of the control traverse (which is not fully shown on this survey) was to establish photogrammetry control for a highway project named "Smith River Bridge #2129, Oregon Coast Highway". This work was done by the Photogrammetry Section and further information may be obtained from Photogrammetry Section, Oregon Department of Transportation, 207 Transportation Building, Salem, Oregon 97310. Photogrammetry's coordinates were used. These coordinates are Local Datum Plane coordinates.

Secondary Traverse No. One used Photogrammetry's points 6 and 7 as a basis of bearing. The traverse's closure after adjustment was 1:353,000.

Secondary Traverse No. Two used Traverse No. One's points 10 and 11 as a basis of bearing. Its closure after adjustment was 1:445,000.

Secondary Traverse No. Three used Photogrammetry's points 2 and 3 as the basis of bearing. Its closure after adjustment was 1:109,000.

Secondary Traverse No. Four used Photogrammetry's points 2 and 3 as the basis of bearing. Its closure after adjustment was 1:277,000.

The equipment used on all four secondary traverses was a Wild T2000 Electronic Theodolite with a DI5 Distomat.

The survey was started August 19, 1991 and finished January 9, 1992.



### LEGEND

- Monument Found
- Monument Set

ROGER PATITZ, P.L.S.  
Oregon Department of Transportation  
3099 N.E. Diamond Lake Blvd.  
Roseburg, Oregon 97470

SHEET TWO OF TWO

SECONDARY TRAVERSE NO. ONE			
POINT	DESCRIPTION	NORTHING	EASTING
10	Set Guinny and Tack	761,024.58	3,970,397.90
11	Fd. 3 1/2" Brass Cap at 1/4 Corner Stamped "Corps of Engineer U.S. Army 1/4 Cor. Sections 34 and 35, T. 21 S., R. 12 W., W.M.	763,293.42	3,968,883.96
12	Set Guinny and Tack	761,013.90	3,970,286.48
SECONDARY TRAVERSE NO. TWO			
15	Fd. PK Nail & Shiner in A.C. in Good Condition	763,034.15	3,968,587.35
16	Fd. PK Nail & Shiner in A.C. in Good Condition	762,576.87	3,968,152.41
17	Fd. Railroad Spike in A.C. in Good Condition	761,247.98	3,966,888.07
18	Set Hub and Tack	762,845.19	3,968,480.88