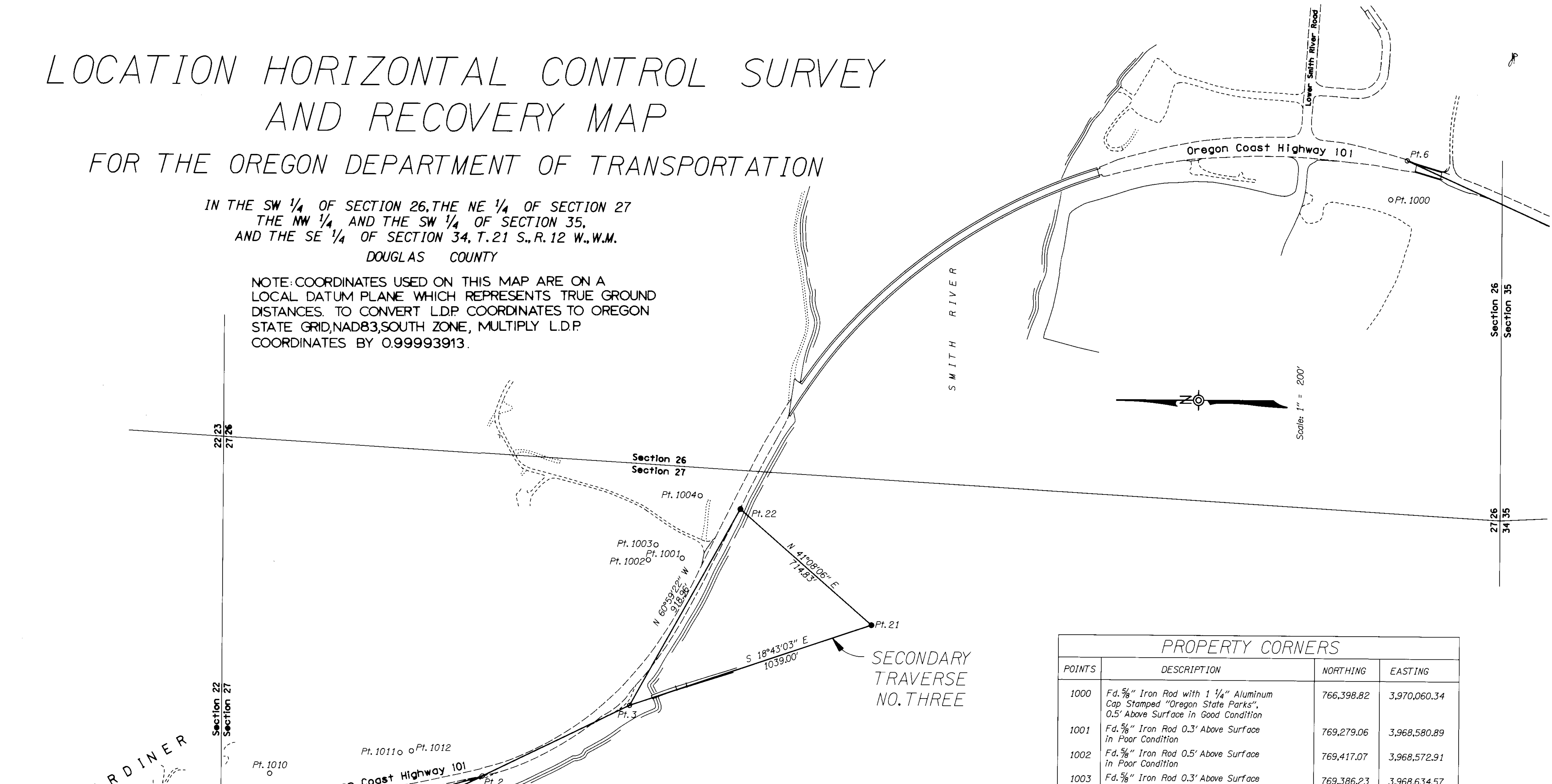


# LOCATION HORIZONTAL CONTROL SURVEY AND RECOVERY MAP

FOR THE OREGON DEPARTMENT OF TRANSPORTATION

IN THE SW 1/4 OF SECTION 26, THE NE 1/4 OF SECTION 27  
THE NW 1/4 AND THE SW 1/4 OF SECTION 35,  
AND THE SE 1/4 OF SECTION 34, T.21 S., R.12 W., W.M.  
DOUGLAS COUNTY

NOTE: COORDINATES USED ON THIS MAP ARE ON A  
LOCAL DATUM PLANE WHICH REPRESENTS TRUE GROUND  
DISTANCES. TO CONVERT L.D.P. COORDINATES TO OREGON  
STATE GRID, NAD83, SOUTH ZONE, MULTIPLY L.D.P.  
COORDINATES BY 0.99993913.



PHOTOGRAMMETRY CONTROL POINTS				
POINTS	DESCRIPTION	NORTHING	EASTING	ELEVATION
2	Fd. 5/8" Iron Rod w/Alum. Cap Stamped "OSHD SR-2 1990"	770,087.56	3,967,685.77	10.03
3	Fd. 5/8" Iron Rod w/Alum. Cap Stamped "OSHD SR-3 1990"	769,489.18	3,967,979.25	11.74
6	Fd. PK Nail	766,332.76	3,970,219.54	30.40
7	Fd. PK Nail	765,630.35	3,969,901.06	42.46
SECONDARY TRAVERSE NO. THREE				
21	Set Hub and Tack	768,505.13	3,968,312.67	
22	Set Hub and Tack	769,043.51	3,968,782.91	
SECONDARY TRAVERSE NO. FOUR				
25	Set Hub and Tack	771,435.32	3,967,303.41	
26	Set Hub and Tack	770,996.88	3,967,481.49	
27	Set Hub and Tack	770,295.17	3,967,585.51	

PROPERTY CORNERS			
POINTS	DESCRIPTION	NORTHING	EASTING
1000	Fd. 5/8" Iron Rod with 1 1/4" Aluminum Cap Stamped "Oregon State Parks", 0.5' Above Surface in Good Condition	766,398.82	3,970,060.34
1001	Fd. 5/8" Iron Rod 0.3' Above Surface in Poor Condition	769,279.06	3,968,580.89
1002	Fd. 5/8" Iron Rod 0.5' Above Surface in Poor Condition	769,417.07	3,968,572.91
1003	Fd. 5/8" Iron Rod 0.3' Above Surface in Poor Condition	769,386.23	3,968,634.57
1004	Fd. 5/8" Iron Rod 0.5' Below Surface in Fair Condition	769,207.62	3,968,835.66
1005	Fd. Tack Set in Lead in Conc. Sidewalk in Good Condition, Flush w/Surface	771,986.38	3,967,284.83
1006	Fd. 1 1/2" Brass Disk Stamped "Flagstaff Corner", Set in Hole in Sidewalk 0.2' Below Surface in Good Condition, Adjacent to Short Retaining Wall	771,803.85	3,967,618.79
1007	Fd. 3/4" Iron Rod Set in Conc. Driveway Flush w/Surface in Good Condition (Meander Corner)	771,150.43	3,967,522.36
1008	Fd. 7/8" Square Head of Bolt Set in Conc. Flush w/Surface in Good Condition	771,142.65	3,967,524.07
1009	Fd. 1 1/2" Square Head of Bolt 0.4' Below Surface in Good Condition	770,955.93	3,967,576.66
1010	Fd. 5/8" Aluminum Rod with 1 1/4" Plastic Cap Stamped "Baker 1978" 0.4' Above Surface in Good Condition	770,952.08	3,967,692.27
1011	Fd. 5/8" Iron Rod 0.2' Above Surface in Fair Condition	770,421.48	3,967,781.14
1012	Fd. 1/2" Iron Rod 0.1' Below Surface in Good Condition	770,375.17	3,967,788.54

LEGEND  
○ Monument Found  
● Monument Set

ROGER PATITZ, P.L.S.  
Oregon Department of Transportation  
3099 N.E. Diamond Lake Blvd.  
Roseburg, Oregon 97470

