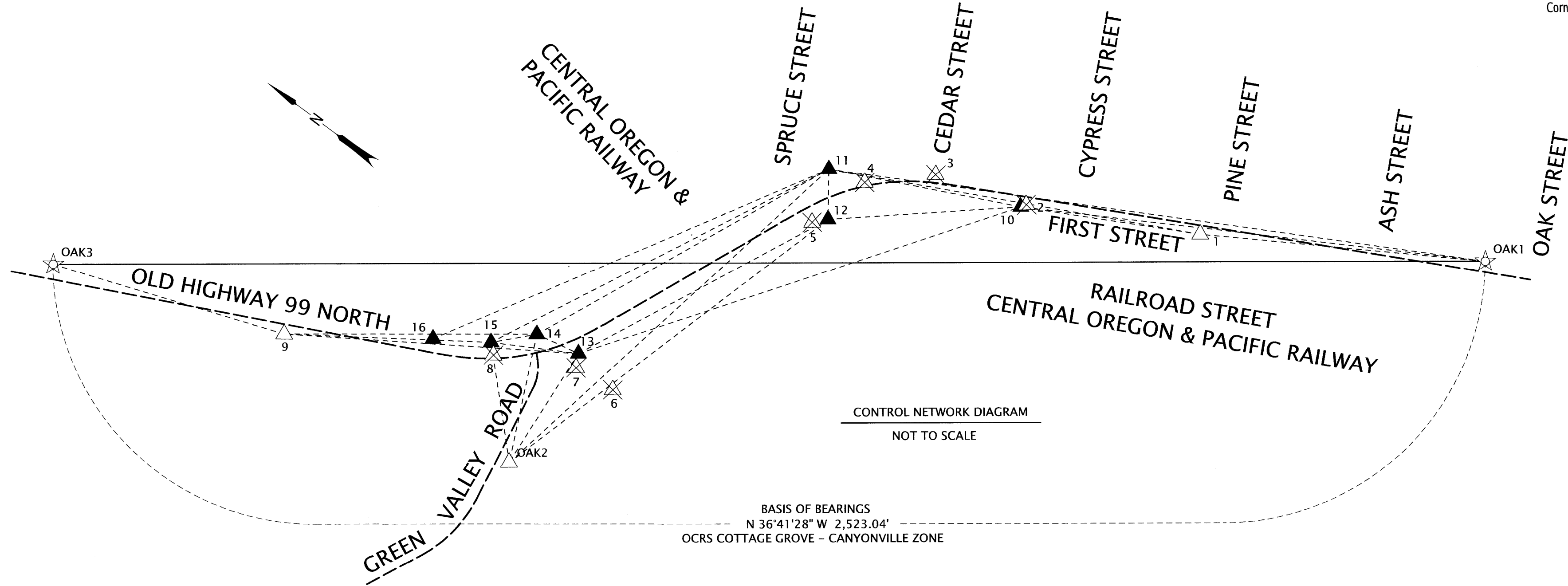


NW 1/4 SECTION 4, T. 25 S., R. 5 W., W.M.
 SW 1/4 SECTION 4, T. 25 S., R. 5 W., W.M.

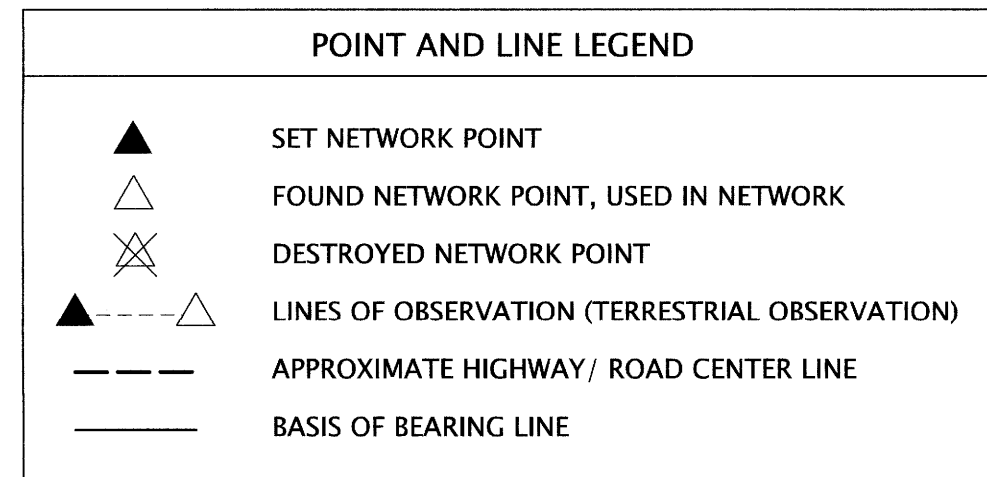
FILED
 Date: 5-29-2025 By: [Signature]
 This survey consists of:
 Map: ST. HWY 099-007A-D
 Narrative:
 Corner Rpt: DOUGLAS COUNTY SURVEYOR



CONTROL POINT TABLE

+ = CONTROL POINT DESTROYED BY CONSTRUCTION

PT. NO.	OCRS NORTHING	OCRS EASTING	DATE	DESCRIPTION
1	215250.73	172686.05	12/4/2019	FOUND MAG NAIL AND WASHER "ODOT 1"
2	215527.59	172545.63	12/4/2019	FOUND MAG NAIL AND WASHER "ODOT 2" +
3	215687.80	172493.28	12/4/2019	FOUND MAG NAIL AND WASHER "ODOT 3" +
4	215779.95	172407.79	12/4/2019	FOUND 1" COPPER PLUG SET IN CONCRETE JUNCTION BOX SURROUND +
5	215812.68	172296.16	12/4/2019	FOUND 5/8" X 30" REBAR w/ 1-1/2" DIAMETER ALUMINUM CAP "ODOT CONTROL 5" +
6	215917.84	171848.88	12/4/2019	FOUND 5/8" X 30" REBAR w/ 1-1/2" DIAMETER ALUMINUM CAP "ODOT CONTROL 6" +
7	215992.98	171841.66	12/4/2019	FOUND 5/8" X 30" REBAR w/ 1-1/2" DIAMETER ALUMINUM CAP "ODOT CONTROL 7" +
8	216123.06	171773.22	12/4/2019	FOUND 5/8" X 30" REBAR w/ 1-1/2" DIAMETER ALUMINUM CAP "ODOT CONTROL 8" +
9	216440.91	171583.45	12/4/2019	FOUND 5/8" X 30" REBAR w/ 1-1/2" DIAMETER ALUMINUM CAP "ODOT CONTROL 9"
10	215533.68	172536.80	4/9/2025	SET 5/8" X 30" REBAR w/ 2" ALUMINUM CAP "ODOT CONTROL POINT 10"
11	215844.67	172389.25	4/9/2025	SET 5/8" X 30" REBAR w/ 2" ALUMINUM CAP "ODOT CONTROL POINT 11"
12	215793.28	172317.13	4/9/2025	SET 5/8" X 30" REBAR w/ 2" ALUMINUM CAP "ODOT CONTROL POINT 12"
13	216004.62	171864.44	4/9/2025	SET 5/8" X 30" REBAR w/ 2" ALUMINUM CAP "ODOT CONTROL POINT 13"
14	216083.57	171848.02	4/9/2025	SET 5/8" X 30" REBAR w/ 2" ALUMINUM CAP "ODOT CONTROL POINT 14"
15	216139.59	171788.57	4/9/2025	SET 5/8" X 30" REBAR w/ 2" ALUMINUM CAP "ODOT CONTROL POINT 15"
16	216225.62	171732.83	4/9/2025	SET 5/8" X 30" REBAR w/ 2" ALUMINUM CAP "ODOT CONTROL POINT 16"
OAK1	214818.91	172947.13	12/2/2019	FOUND 5/8" X 30" REBAR w/ 1-1/2" ALUMINUM CAP "ODOT CONTROL OAK 1"
OAK2	215988.20	171637.49	12/2/2019	FOUND 5/8" X 30" REBAR w/ 1-1/2" ALUMINUM CAP "ODOT CONTROL OAK 2"
OAK3	216842.06	171439.61	12/2/2019	FOUND 5/8" X 30" REBAR w/ 1-1/2" ALUMINUM CAP "ODOT CONTROL OAK 3"



CONTROL NARRATIVE

BASIS OF BEARINGS AND COORDINATES FOR THIS SURVEY IS THE OREGON COORDINATE REFERENCE SYSTEM (OCRS) COTTAGE GROVE - CANYONVILLE ZONE, NAD 83(2011) EPOCH 2010.00. THE OCRS COORDINATES ARE EQUAL TO OR CLOSE TO TRUE GROUND DISTANCES. THE UNITS OF THIS SURVEY ARE INTERNATIONAL FEET. THE ORIGINAL SURVEY THAT ESTABLISHED CONTROL FOR THE OLD HWY. 99N: OAKLAND BRIDGE REPLACEMENT PROJECT HELD THE CONTROL POINTS AS ESTABLISHED ON FILED SURVEY ST. HWY. 99-006. THE ORIGINAL PROCEDURE IN 2020 INVOLVED HOLDING CONTROL POINTS "OAK1", "OAK2" AND "OAK3" FROM GNSS STATIC SURVEY FOR THE PROJECT AND THEN PERFORMING A TERRESTRIAL NETWORK BASED UPON THE FIXED GNSS VALUES. A POST-CONSTRUCTION INVENTORY OF THE CONTROL NETWORK WAS PERFORMED AS A PART OF THIS SURVEY AND FOUND MANY OF THE ORIGINAL CONTROL POINTS DESTROYED BY CONSTRUCTION ACTIVITIES. A SUPPLEMENTARY SURVEY WAS THEN PERFORMED TO RE-ESTABLISH NEW CONTROL POINTS AND AUGMENT THE EXISTING CONTROL NETWORK FOR THE PROJECT. A NEW TERRESTRIAL NETWORK WAS THEN PERFORMED HOLDING CONTROL POINTS 1, 9, OAK1 AND OAK3. A NEW TERRESTRIAL NETWORK WAS THEN PROCESSED AND ADJUSTED WITH A 2D LEAST SQUARES ADJUSTMENT UTILIZING LEICA INFINITY. THE HORIZONTAL LEAST SQUARES ADJUSTMENT PASSED THE ACCURACY STANDARDS FOR A 2D NETWORK PER ODOT'S SURVEY POLICY AND PROCEDURE MANUAL. AS A NOTE, "OAK2" WAS FOUND OUT OF POSITION AND MAYBE DISTURBED SO WAS NOT HELD IN THE ADJUSTMENT. THE NEW ADJUSTED COORDINATES FOR "OAK2" ARE SHOWN IN TABLE ABOVE.

CONTROL POINTS FOR THIS SURVEY WERE NOT SET ON AND DO NOT REPRESENT PROPERTY OR RIGHT OF WAY LINES AND ARE INTENDED FOR THE USE BY ODOT IN SUPPORT OF THIS AND FUTURE PROJECTS. IT IS NOT THE INTENT OF ODOT TO PERPETUATE THESE CONTROL POINTS AS MONUMENTS.

REGISTERED PROFESSIONAL LAND SURVEYOR

OREGON
 JULY 15, 2003
 ANDREW DAVID AUSLAND
 56136

EXPIRES: 12/31/2025

OREGON DEPARTMENT OF TRANSPORTATION

RIGHT-OF-WAY BOUNDARY MONUMENTATION MAP
 OLD HWY. 99N: OAKLAND BRIDGE
 OLD HIGHWAY 99 NORTH
 DOUGLAS COUNTY



ODOT REGION 3 TECH CENTER
 100 ANTELOPE ROAD
 WHITE CITY, OREGON, 97503 KEY NO. 21591

MAY, 2025
 NO SCALE
 SHEET 2 OF 4