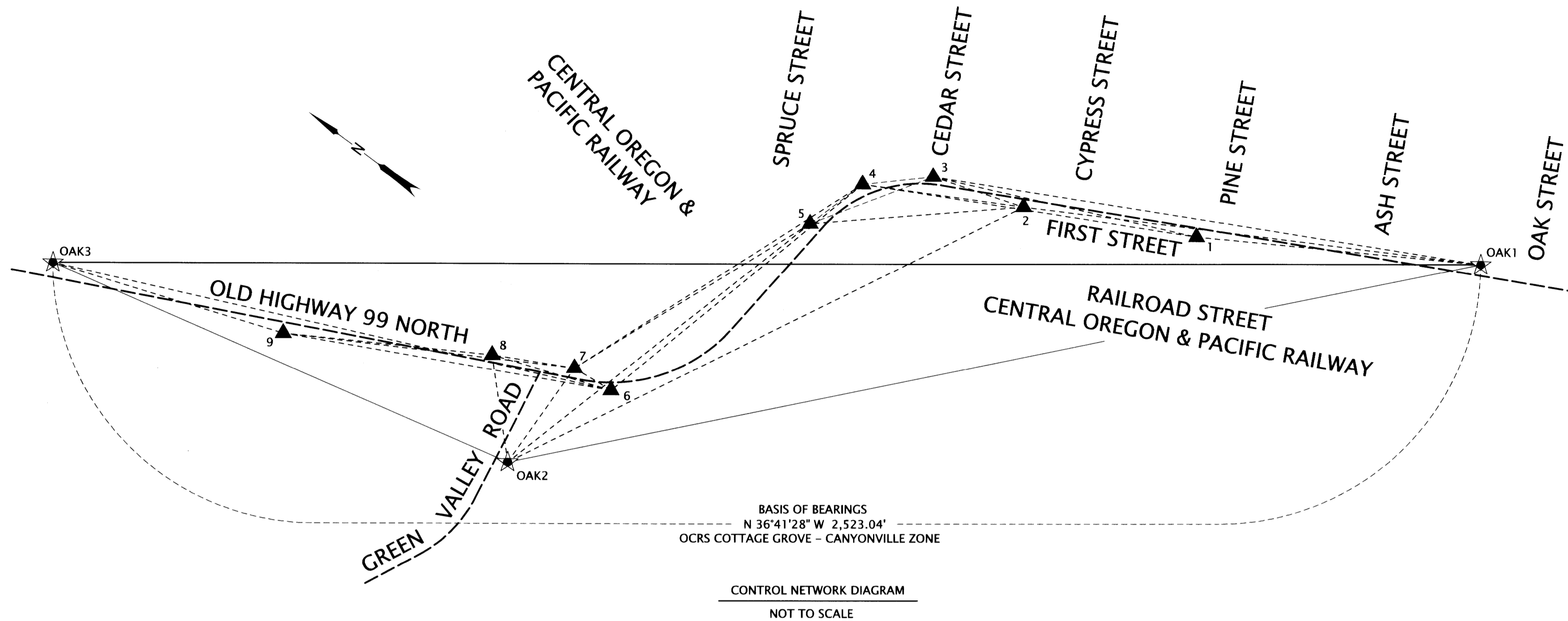


NW 1/4 SECTION 4, T. 25 S., R. 5 W., W.M.
 SW 1/4 SECTION 4, T. 25 S., R. 5 W., W.M.

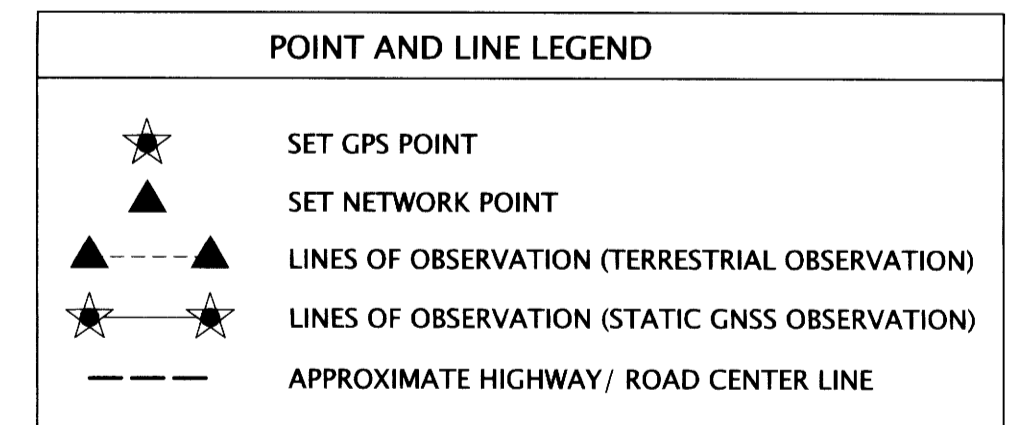
FILED
 Date: 11/30/2020 By: [Signature]
 This survey consists of:
 Map: ST. HWY 99-006A-F
 Narrative: _____
 Corner Map: _____

DOUGLAS COUNTY
 SURVEYOR



CONTROL POINT TABLE

PT. NO.	OCRS NORTHING	OCRS EASTING	DATE	DESCRIPTION
1	215250.73	172686.05	12/4/2019	SET MAG NAIL AND WASHER "ODOT 1"
2	215527.59	172545.63	12/4/2019	SET MAG NAIL AND WASHER "ODOT 2"
3	215687.80	172493.28	12/4/2019	SET MAG NAIL AND WASHER "ODOT 3"
4	215779.95	172407.79	12/4/2019	SET 1" COPPER PLUG SET IN CONCRETE JUNCTION BOX SURROUND
5	215812.68	172296.16	12/4/2019	SET 5/8" X 30" REBAR w/ 1-1/2" DIAMETER ALUMINUM CAP ON "ODOT CONTROL 5"
6	215917.84	171848.88	12/4/2019	SET 5/8" X 30" REBAR w/ 1-1/2" DIAMETER ALUMINUM CAP ON "ODOT CONTROL 6"
7	215992.98	171841.66	12/4/2019	SET 5/8" X 30" REBAR w/ 1-1/2" DIAMETER ALUMINUM CAP ON "ODOT CONTROL 7"
8	216123.06	171773.22	12/4/2019	SET 5/8" X 30" REBAR w/ 1-1/2" DIAMETER ALUMINUM CAP ON "ODOT CONTROL 8"
9	216440.91	171583.45	12/4/2019	SET 5/8" X 30" REBAR w/ 1-1/2" DIAMETER ALUMINUM CAP ON "ODOT CONTROL 9"
OAK 1	214818.91	172947.13	12/2/2019	SET 5/8" X 30" REBAR w/ 1-1/2" DIAMETER ALUMINUM CAP ON "ODOT CONTROL OAK 1"
OAK 2	215988.24	171637.46	12/2/2019	SET 5/8" X 30" REBAR w/ 1-1/2" DIAMETER ALUMINUM CAP ON "ODOT CONTROL OAK 2"
OAK 3	216842.06	171439.61	12/2/2019	SET 5/8" X 30" REBAR w/ 1-1/2" DIAMETER ALUMINUM CAP ON "ODOT CONTROL OAK 3"



ASSESSOR'S MAPS:
 25 5 4
 25 5 4CA
 25 5 4BD
 25 5 4BC

CONTROL NARRATIVE

PROJECT - OLD HWY. 99N: OAKLAND BRIDGE
 LOCATION - DOUGLAS COUNTY, OREGON
 KEY NUMBER - 21591
 HORIZONTAL - OREGON COORDINATE REFERENCE SYSTEM (OCRS):
 COTTAGE GROVE - CANYONVILLE ZONE,
 NAD83(2011) EPOCH 2010 (INTERNATIONAL FEET)

HORIZONTAL CONTROL

A STATIC GPS NETWORK USING REDUNDANT 2 HOUR DOUBLE-OCCUPATIONS WAS PERFORMED TO DERIVE COORDINATES ON POINTS OAK 1, OAK 2 AND OAK 3. STATIONS 'CHEM', 'P374' AND 'P820' OF THE OREGON REAL TIME GEODETIC NETWORK (ORGN) WERE HELD FIXED TO DERIVE HORIZONTAL POSITION ON OAK 1, OAK 2 AND OAK 3. A SUBSEQUENT CONVENTIONAL NETWORK WAS THEN PERFORMED THROUGH NETWORK POINTS 1 THROUGH 9, HOLDING THE FINAL ADJUSTED GRID COORDINATE VALUES FOR OAK 1, OAK 2 AND OAK 3 FIXED. BOTH NETWORKS WERE PROCESSED AND ADJUSTED UTILIZING A 3D LEAST SQUARES ADJUSTMENT UTILIZING LEICA INFINITY.

CONTROL POINTS FOR THIS SURVEY WERE NOT SET ON AND DO NOT REPRESENT PROPERTY OR RIGHT OF WAY LINES AND ARE INTENDED FOR THE USE BY ODOT IN SUPPORT OF THIS AND FUTURE PROJECTS. IT IS NOT THE INTENT OF ODOT TO PERPETUATE THESE CONTROL POINTS AS MONUMENTS.

REGISTERED
 PROFESSIONAL
 LAND SURVEYOR

[Signature]
 OREGON
 JULY 15, 2003
 ANDREW DAVID AUSLAND
 56136
 EXPIRES: 12/31/2021

OREGON DEPARTMENT OF TRANSPORTATION

HORIZONTAL CONTROL, RECOVERY AND RETRACEMENT SURVEY
 OLD HWY. 99N: OAKLAND BRIDGE
 OLD HIGHWAY 99 NORTH
 DOUGLAS COUNTY



ODOT REGION 3 TECH CENTER
 100 ANTELOPE ROAD
 WHITE CITY, OREGON, 97503 KEY NO. 21591

NOVEMBER 24, 2020
 NO SCALE
 SHEET 2 OF 6