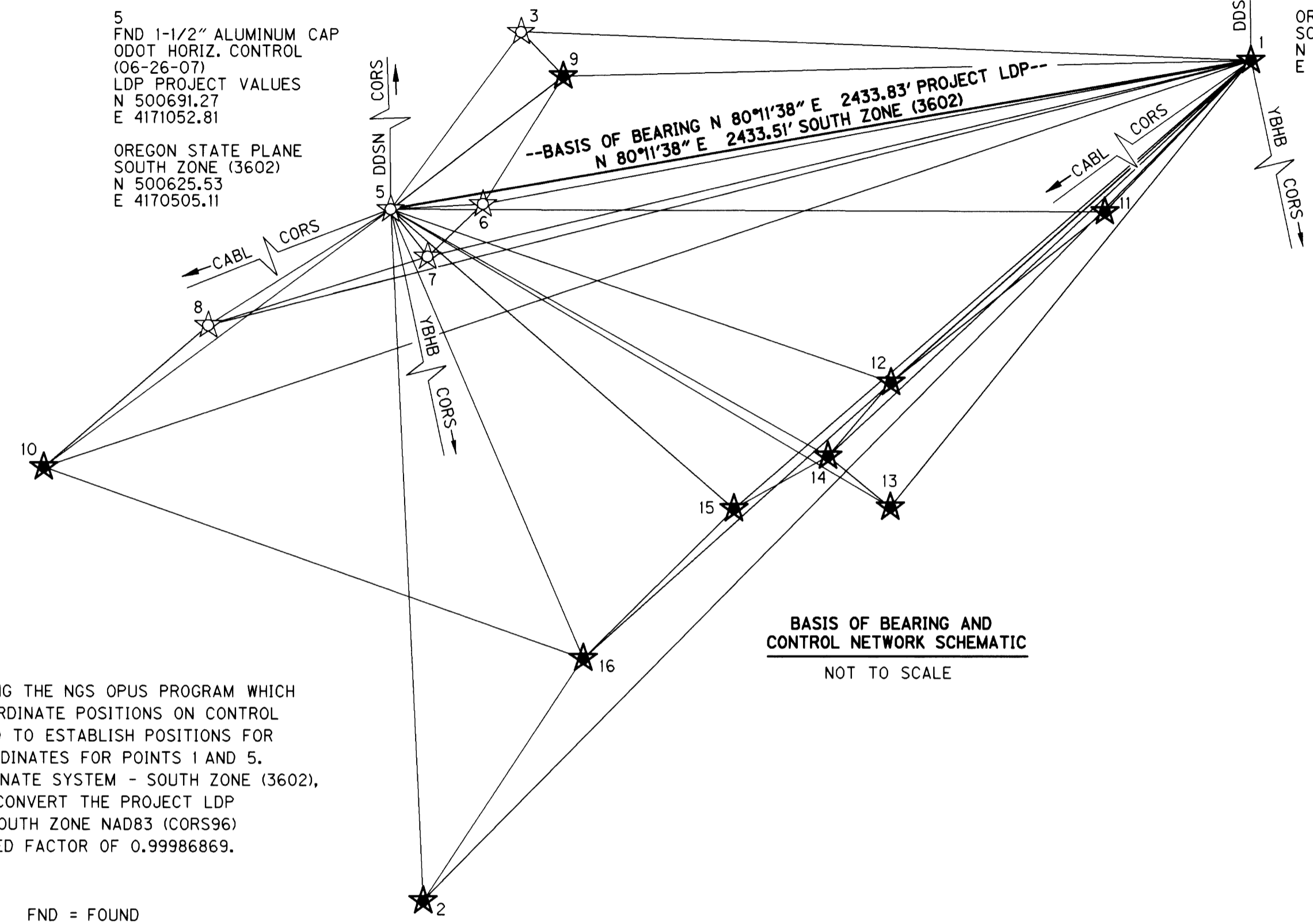


NE 1/4 SEC 32 T29S R5W WM
 SE 1/4 SEC 32 T29S R5W WM
 SW 1/4 SEC 33 T29S R5W WM

FILED
 Date: 9-17-2007 By: JC
 This survey consists of:
 Map: ST HWY 99-005 A-G
 Narrative:
 Corner Rpt:
 DOUGLAS COUNTY SURVEYOR

1 SET MAG & WASHER
 OBEC CONTROL
 (06-26-07)
 LDP PROJECT VALUES
 N 501105.79
 E 4173451.08
 OREGON STATE PLANE
 SOUTH ZONE (3602)
 N 501039.99
 E 4172903.07

5 FND 1-1/2" ALUMINUM CAP
 ODOT HORIZ. CONTROL
 (06-26-07)
 LDP PROJECT VALUES
 N 500691.27
 E 4171052.81
 OREGON STATE PLANE
 SOUTH ZONE (3602)
 N 500625.53
 E 4170505.11



CONTROL NARRATIVE

PROJECT: WEAVER ROAD EXTENSION
 LOCATION: DOUGLAS COUNTY
 ODOT KEY NUMBER: 14085
 OBEC PROJECT NUMBER: 19-84.07
 SURVEY DATUM:
 HORIZONTAL - NAD83 (CORS96) EPOCH 2002 (INTERNATIONAL FEET)
 VERTICAL - NAVD 88 (INTERNATIONAL FEET)

PRIMARY HORIZONTAL CONTROL WAS BROUGHT INTO THE PROJECT USING THE NGS OPUS PROGRAM WHICH HELD CORS STATIONS "DDS", "CABL", AND "YBHB" TO ESTABLISH COORDINATE POSITIONS ON CONTROL POINTS 1 AND 5. A SUBSEQUENT STATIC GPS SURVEY WAS PERFORMED TO ESTABLISH POSITIONS FOR POINTS 2, 3 AND 6 THROUGH 16, BY HOLDING THE OPUS-DERIVED COORDINATES FOR POINTS 1 AND 5. THE COORDINATE SYSTEM WAS HELD AT OREGON STATE PLANE COORDINATE SYSTEM - SOUTH ZONE (3602), UNTIL ALL FIELD SURVEYING AND ADJUSTMENTS WERE COMPLETE. TO CONVERT THE PROJECT LDP COORDINATES TO THE OREGON STATE PLANE COORDINATE SYSTEM - SOUTH ZONE NAD83 (CORS96) EPOCH 2002, MULTIPLY THE LDP COORDINATE VALUES BY THE COMBINED FACTOR OF 0.99986869.

BASIS OF BEARING AND
 CONTROL NETWORK SCHEMATIC
 NOT TO SCALE

AERIAL PHOTO PREMARK TABLE

FND = FOUND
 RPC = RED PLASTIC CAP

PT. ID.	LDP NORTHING	LDP EASTING	DATE	DESCRIPTION
3000	499640.08	4171761.15	7-16-2007	SET MAGNAIL W/PAINTED PREMARK
3001	499781.05	4172421.00	7-16-2007	SET MAGNAIL W/PAINTED PREMARK
3002	500172.51	4172961.80	7-16-2007	SET MAGNAIL W/PAINTED PREMARK
3003	500382.12	4170481.36	7-16-2007	SET MAGNAIL W/PAINTED PREMARK
3004	500807.80	4171336.28	7-16-2007	SET MAGNAIL W/PAINTED PREMARK
3005	501556.27	4171802.57	7-16-2007	SET MAGNAIL W/PAINTED PREMARK

NETWORK POINT COORDINATE TABLE

PT. ID.	LDP NORTHING	LDP EASTING	DATE	DESCRIPTION
1	501105.79	4173451.08	6-26-2007	SET MAGNAIL & WASHER STAMPED "OBEC CONTROL"
2	498763.70	4171142.76	6-26-2007	SET MAGNAIL & WASHER STAMPED "OBEC CONTROL"
3	501185.45	4171417.11	6-26-2007	FND 5/8" IRON ROD W/ 1-1/2" ALUMINUM CAP "ODOT HORIZ. CONTROL 3", FLUSH
5	500691.27	4171052.81	6-26-2007	FND 5/8" IRON ROD W/ 1-1/2" ALUMINUM CAP "ODOT HORIZ. CONTROL 5", FLUSH
6	500705.80	4171310.30	6-26-2007	FND 5/8" IRON ROD W/ 1-1/2" ALUMINUM CAP "ODOT HORIZ. CONTROL 6", FLUSH
7	500559.43	4171155.70	6-26-2007	FND 5/8" IRON ROD W/ 1-1/2" ALUMINUM CAP "ODOT HORIZ. CONTROL 7", FLUSH
8	500367.47	4170544.19	6-26-2007	FND 5/8" IRON ROD W/ 1-1/2" ALUMINUM CAP "ODOT HORIZ. CONTROL 8", FLUSH
9	501062.03	4171534.48	6-26-2007	SET MAGNAIL & WASHER STAMPED "OBEC CONTROL"
10	499972.03	4170085.43	6-26-2007	SET MAGNAIL & WASHER STAMPED "OBEC CONTROL"
11	500684.20	4173044.05	6-26-2007	SET MAGNAIL & WASHER STAMPED "OBEC CONTROL"
12	500208.05	4172447.57	6-26-2007	SET 5/8" x 30" REBAR W/RPC STAMPED "OBEC CONTROL"
13	499860.63	4172445.90	6-26-2007	SET MAGNAIL & WASHER STAMPED "OBEC CONTROL"
14	500002.64	4172272.12	6-26-2007	SET MAGNAIL & WASHER STAMPED "OBEC CONTROL"
15	499856.69	4172009.77	6-26-2007	SET 5/8" x 30" REBAR W/RPC STAMPED "OBEC CONTROL"
16	499439.58	4171589.35	6-26-2007	SET MAGNAIL & WASHER STAMPED "OBEC CONTROL"

LEGEND

- ☆ FOUND GPS NETWORK POINT
- ★ SET GPS NETWORK POINT
- ☆-☆ LINES OF OBSERVATION

ENGLISH
 REGISTERED PROFESSIONAL LAND SURVEYOR
 ARON J. CUTSFORTH
 OREGON JULY 12, 2005
 65696
 RENEWAL DATE: DEC. 31, 2007
 SIGNED: SEPT. 17, 2007

OBEC CONSULTING ENGINEERS
 Corporate Office: 920 COUNTRY CLUB ROAD, SUITE 100B EUGENE, OREGON 97401-6089, 541-683-6090
 2235 MISSION STREET SE, SUITE 100 SALEM, OREGON 97302-1295, 503-589-4100
 1335 POPLAR DRIVE MEDFORD, OREGON 97504-5207, 541-774-5590
 5005 SW MEADOWS ROAD, SUITE 120 LAKE OSWEGO, OREGON 97035, 503-620-6103

OREGON DEPARTMENT OF TRANSPORTATION
 HORIZONTAL CONTROL, RECOVERY AND RETRACEMENT SURVEY
 WEAVER ROAD EXTENSION
 OLD PACIFIC HIGHWAY
 DOUGLAS COUNTY
 ODOT REGION 3 SEPTEMBER, 2007
 3500 NW STEWART PARKWAY NO SCALE
 ROSEBURG, OR. 97470 KEY # 14085 SHEET 3 OF 7
 DESIGNED: ARON CUTSFORTH PROJ. NO. 19-84.07
 DRAWN: R. BEAUSOLEIL CHK'D: ANDY AUSLAND