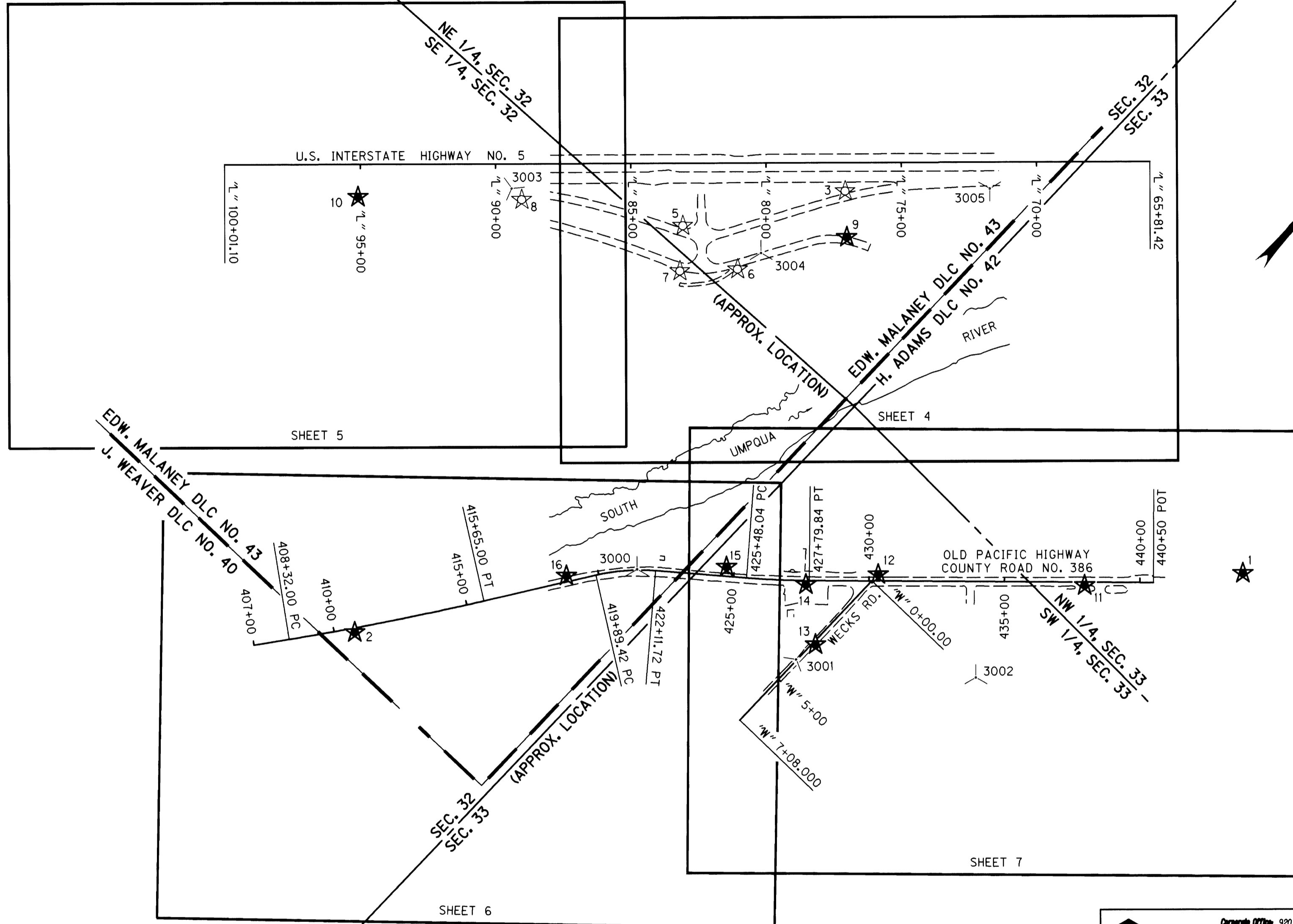


SHEET INDEX

1. SHEET LAYOUT AND SHEET INDEX
2. NARRATIVE
3. CONTROL NETWORK AND BASIS OF BEARING
- 4.-7. SURVEY

NE 1/4 SEC 32 T29S R5W WM
 SE 1/4 SEC 32 T29S R5W WM
 SW 1/4 SEC 33 T29S R5W WM

FILED
 Date: 9-17-2007 By: JC
 This survey consists of:
 Map: ST HWY 99-005 A-G
 Narrative: _____
 Corner Rpt: _____
 DOUGLAS COUNTY
 Surveyor



SHEET LAYOUT DIAGRAM
 NOT TO SCALE

LEGEND	
	FOUND GPS NETWORK PT.
	SET GPS NETWORK PT.
	AERIAL PHOTO PREMARK

REGISTERED
 PROFESSIONAL
 LAND SURVEYOR

OREGON
 JULY 12, 2005
ARON J. CUTSFORTH
 65696

RENEWAL DATE: DEC. 31, 2007
 SIGNED: SEPT. 17, 2007

JIM COLTON OBECE
 APPROVED BY: SURV. GROUP MNGR.

OBECE CONSULTING ENGINEERS
 Corporate Office: 920 COUNTRY CLUB ROAD, SUITE 100B EUGENE, OREGON 97401-6089, 541-683-6090
 2235 MISSION STREET SE, SUITE 100 SALEM, OREGON 97302-1295, 503-589-4100
 1335 POPLAR DRIVE MEDFORD, OREGON 97504-5207, 541-774-5590
 5005 SW MEADOWS ROAD, SUITE 120 LAKE OSWEGO, OREGON 97035, 503-620-6103

OREGON DEPARTMENT OF TRANSPORTATION
 HORIZONTAL CONTROL, RECOVERY AND RETRACEMENT SURVEY
 WEAVER ROAD EXTENSION
 OLD PACIFIC HIGHWAY
 DOUGLAS COUNTY

ODOT REGION 3
 3500 NW STEWART PARKWAY
 ROSEBURG, OR. 97470

SEPTEMBER, 2007
 NO SCALE
 SHEET 1 OF 7

DESIGNED: ARON CUTSFORTH
 DRAWN: R. BEAUSOLEIL
 CHK'D: ANDY AUSLAND

KEY # 14085
 PROJ. NO. 19-84.07

NE 1/4 SEC 32 T29S R5W WM
 SE 1/4 SEC 32 T29S R5W WM
 SW 1/4 SEC 33 T29S R5W WM

FILED
 Date: 9-17-2007 By: JC
 This survey consists of:
 Map: St Hwy 99-005 A-G
 Narrative:
 Corner Rpt:
 DOUGLAS COUNTY
 SURVEYOR

NARRATIVE

THE PURPOSE OF THIS SURVEY IS TO RESOLVE THE FIELD LOCATION OF THE EXISTING RIGHTS-OF-WAY FOR U.S. INTERSTATE NO. 5 (I-5) NEAR THE WEAVER ROAD INTERCHANGE, OLD PACIFIC HIGHWAY (NOW DOUGLAS COUNTY ROAD NO. 386), AND WECKS ROAD, BOTH NEAR MYRTLE CREEK. THE RIGHTS-OF-WAY RESOLUTION FOR THE SOUTHEASTERLY SIDE OF I-5 IS LOCATED NORTH AND SOUTH OF THE WEAVER ROAD INTERCHANGE, ALONG OLD PACIFIC HIGHWAY SOUTHWESTERLY FROM THE INTERSECTION WITH WALNUT STREET, AND ALONG WECKS ROAD SOUTH FROM THE INTERSECTION OF OLD PACIFIC HIGHWAY. THIS SURVEY WAS ALSO COMPLETED TO PERPETUATE THE POSITION OF ANY EXISTING SURVEY MONUMENTS THAT LIE NEAR THE FUTURE IMPROVEMENTS OF SAID ROAD LOCATIONS. PERPETUATION OF THE MONUMENT LOCATIONS WAS ACCOMPLISHED BY TYING THE MONUMENTS TO THE PROJECT CONTROL NETWORK. THIS SURVEY WAS MADE AT THE REQUEST OF THE OREGON DEPARTMENT OF TRANSPORTATION (ODOT) IN SUPPORT OF AN UPCOMING IMPROVEMENT PROJECT TO EXTEND WEAVER ROAD ACROSS THE SOUTH UMPQUA RIVER TO OLD PACIFIC HIGHWAY. THIS SURVEY MEETS THE REQUIREMENTS FOR A RECOVERY SURVEY AS OUTLINED IN THE OREGON REVISED STATUTES, CHAPTER 209.155.

THE LOCATION OF THE SANDSTONE MONUMENT MARKING THE SOUTHWEST CORNER OF THE H. ADAMS DONATION LAND CLAIM NO. 42, WAS FOUND TO BE IN DISAGREEMENT WITH THE ACCESSORIES LISTED IN THE DOUGLAS COUNTY SURVEYOR'S CORNER NOTES NO. 042030. THE FOUND MONUMENT APPEARS TO HAVE BEEN DISTURBED. THE CALCULATED POSITION AS SHOWN HEREON WAS DETERMINED BY HOLDING THE RECORD DISTANCES FROM RECOVERED ACCESSORIES, POINT NO.'s 1048, 1049, AND 1051.

THIS SURVEY WAS PERFORMED IN INTERNATIONAL FEET UNITS.

CONTROL POINTS FOR THIS SURVEY WERE NOT SET ON AND DO NOT REPRESENT PROPERTY LINES OR RIGHT-OF-WAY LINES AND ARE INTENDED FOR USE SOLELY BY THE OREGON DEPARTMENT OF TRANSPORTATION AND OBEC CONSULTING ENGINEERS IN SUPPORT OF FUTURE PROJECTS. IT IS NOT THE INTENT OF THE OREGON DEPARTMENT OF TRANSPORTATION OR OBEC CONSULTING ENGINEERS TO PERPETUATE THESE CONTROL POINTS AS MONUMENTS.

THIS SURVEY WAS PERFORMED IN JULY AND AUGUST OF 2007. THE SURVEY EQUIPMENT CONSISTED OF ONE TRIMBLE 4400 GPS RECEIVER, FOUR TRIMBLE R8 GPS RECEIVERS, THREE TSC2 DATA COLLECTORS, ONE TRIMBLE ACU DATA COLLECTOR, ONE TRIMBLE TSCI DATA COLLECTOR, ONE TRIMBLE S6 ROBOTIC TOTAL STATION, ONE TRIMBLE 5603 SEMI-ROBOTIC TOTAL STATION, AND ONE SOKKIA SDL30 DIGITAL LEVEL.

U.S. INTERSTATE NO. 5 ("I" LINE)

THE RESOLUTION OF U.S. INTERSTATE NO. 5 (I-5), WAS COMPLETED BY UTILIZING THE OREGON DEPARTMENT OF TRANSPORTATION (ODOT) DRAWING NO. 7B-22-19. THE RECORD ALIGNMENT FROM CENTER LINE STATIONS 65+81.42 POT TO 100+01.10 POT WAS RECREATED PER SAID ODOT DRAWING. THE LOCATION OF SAID ALIGNMENT AND RIGHT-OF-WAY WAS ROTATED TO FIT WITH FOUND MONUMENT NOS. 1018 AND 1019. THE RECORD STATIONS FOR FOUND MONUMENT NOS. 1007, 1008, AND 1017 WERE FOUND TO BE OFF BY AS MUCH AS 1.10 FEET, WHICH WAS ALSO IN AGREEMENT WITH FILED SURVEY NO. 15-002, FILED BY ODOT IN APRIL OF 1999. ALTHOUGH THE STATIONS FOR SAID FOUND MONUMENTS DID NOT AGREE WITH THE RECORD LOCATION, THE OFFSETS FROM THE RESOLVED ALIGNMENT WAS FOUND TO BE MINIMAL. THE SAME WAS FOUND TO BE TRUE FOR FOUND MONUMENT NOS. 1021, 1022, AND 1023 THAT WERE INTENDED TO MONUMENT ANGLE POINTS ON THE SOUTHEASTERLY RIGHT-OF-WAY LINE. MONUMENTS FOUND PER FILED SURVEY M99-80 BY WILLIAM J. RUPPERT, P.L.S., ALONG WITH FOUND ODOT MONUMENTS AND SAID ODOT DRAWING, WERE USED TO AID IN THE CALCULATION OF RIGHT-OF-WAY ANGLE POINT WHERE NO MONUMENT WAS FOUND AT STATION 76+11.97.

OLD PACIFIC HIGHWAY - DOUGLAS COUNTY ROAD NO. 386 ("D" LINE)

THE RESOLUTION OF OLD PACIFIC HIGHWAY WAS COMPLETED BY UTILIZING THE OREGON DEPARTMENT OF TRANSPORTATION (ODOT) DRAWING NO. 3B-11-8 AND FOUND MONUMENTS SET BY PRIVATE SURVEYS. STATIONING WAS ESTABLISHED BY HOLDING THE INTERSECTION OF THE SOUTH LINE OF EDW. MALANEY DONATION LAND CLAIM NO. 43 AND CENTERLINE STATION 409+45 AS SHOWN PER SAID ODOT DRAWING. POINT NO.S 1025, 1032, 1042, AND 1047 WERE HELD AT A 30.00 FOOT OFFSET TO ESTABLISH THE TANGENTS FROM STATIONS 415+65.00 PT TO 419+89.42 PC AND 427+79.84 PT TO 440+50 POT RESPECTIVELY. THE RECORD DELTA ANGLE PER SAID ODOT DRAWING WAS HELD TO ESTABLISH THE TANGENT BEARING BACK IN STATION FROM 411+98.625 PI. TO ESTABLISH THE CURVES BETWEEN STATIONS 419+89.42 PC AND 427+79.84 PT, THE RECORD TANGENT LENGTHS PER SAID ODOT DRAWING WERE HELD TO POSITION THE "PI" STATIONS, AND THE RECORD CURVE LENGTHS WERE HELD TO PRESERVE STATIONING.

OLD PACIFIC HIGHWAY - DOUGLAS COUNTY ROAD NO. 386 ("DC" LINE)

ADDITIONAL RIGHT-OF-WAY WAS ACQUIRED BY DOUGLAS COUNTY IN INSTRUMENT NOS. 93-25844 AND 94-01444. THE CENTERLINE ALIGNMENT PER SAID INSTRUMENTS WAS LOCATED BY USING THE RECORD TIES TO THE ONE QUARTER CORNER COMMON TO SECTIONS 33 AND 34, TOWNSHIP 29 SOUTH, RANGE 5 WEST OF THE WILLAMETTE MERIDIAN, DOUGLAS COUNTY, OREGON. A WIDTH OF 42 FEET ON THE LEFT SIDE OF SAID CENTERLINE WAS OBTAINED ON THOSE PARCELS AS DESCRIBED IN INSTRUMENT NOS. 2005-17899 AND 1989-07242. FOR MAPPING CLARITY, THIS CENTERLINE ALIGNMENT IS NOT SHOWN.

WECKS ROAD ("W" LINE)

THE RESOLUTION OF WECKS ROAD WAS COMPLETED BY UTILIZING FOUND MONUMENTS FROM FILED SURVEYS M 116-63, M 98-52, PLAT OF WECKS TRACT (VOL. 6, PAGE 59), AND PARTITION PLAT NO. 1995-2. THE ORIGINAL RIGHT-OF-WAY FOR WECKS ROAD WAS DEDICATED PER THE PLAT OF WECKS TRACT AT 40 FEET WIDE. 5 FEET OF ADDITIONAL RIGHT OF WAY WAS ACQUIRED BY DOUGLAS COUNTY IN DOCUMENT NOS. 287968, 287969, 287977, 287956, 287971, 287981, AND 94-25892, RESULTING IN A 50 FOOT WIDE RIGHT-OF-WAY WIDTH. PARTITION PLAT NO. 1995-2 DEDICATED AN ADDITIONAL 5 FEET OF RIGHT-OF-WAY BEYOND THE SAID 50 FOOT WIDTH.

REFERENCES

CS 50/56-1, CS 50/56-2, M 121-79, PARTITION PLAT NO. 1997-0076 A & B, VOL. 6, PAGE 59 (WECKS TRACT), M 98-52, PARTITION PLAT NO. 1995-0002, M 116-63, M 54-40, PARTITION PLAT NO. 1998-0093, CS 51/130-3, CS 46/157-1, M 129-39 A THROUGH K, VOL. 16, PAGE 31, CS 55/359-1, CS 65/19-1, VOL. 22, PAGE 6 (SPENCER ESTATES), COUNTY ROAD SURVEY NO. 01630186, ST. HWY. 15-017 A THROUGH H, M 112-32, CS 51/130, PARTITION PLAT NO. 2000-0061, CS 58/242-4, VOL. 7, PAGE 42 (BRIGGS ACRES), M 33-14, M 63-2, M 69-68, M 117-42, M 129-29, M 132-24, CS 58/134-2, M 59-16, PARTITION PLAT NO. 1993-0040, CS 65/12-4, PARTITION PLAT NO. 1997-0071, M 55-43, PARTITION PLAT NO. 1999-0098, M 95-54, PARTITION PLAT NO. 2005-0033, M 64-71, M 129-5, M 99-80, M 136-76, M 124-1, M 99-10, CS 58/103-16, M 9-43, VOL. 2, PAGE 41, M 1-36, M 59-12, ODOT DRAWING NO. 3B-11-8, ODOT DRAWING NO. 7B-22-19, DOUGLAS COUNTY SURVEYOR CORNER NOTES NO.S 042030, 042040, AND 400140

DEEDS USED

1998-13934, 1998-13935, 2000-10857, 2007-010873, 287956, 287957, 1990-08668, 2003-025019, 2003-023961, 1996-16562, 2005-017946, 1994-25892, 287981, 1999-28109, 2001-00236, 1991-11192, 287977, 2006-001688, 1970-5033, 1993-12058, 1988-17705, 2000-16111, 2005-3645, 1996-13693, 1996-22643, 2005-017899, 1990-08779, 1995-02061, 1995-02062, 1995-05621, 2006-01689, 2006-006147, 2006-008326, 2006-01688, 2000-24532, 1989-07242, 2003-032158, 2001-26121, 2000-05981, 2006-016641, 1990-06855, 1989-00021, 1979-19851

FILE NAME: 14085ret.dgn

OBEC CONSULTING ENGINEERS
 Corporate Office: 920 COUNTRY CLUB ROAD, SUITE 100B EUGENE, OREGON 97401-6089, 541-683-6090
 2235 MISSION STREET SE, SUITE 100 SALEM, OREGON 97302-1295, 503-589-4100
 1335 POPLAR DRIVE MEDFORD, OREGON 97504-5207, 541-774-5590
 5005 SW MEADOWS ROAD, SUITE 120 LAKE OSWEGO, OREGON 97035, 503-620-6103

REGISTERED
 PROFESSIONAL
 LAND SURVEYOR

ARON J. CUTSFORTH
 65696

RENEWAL DATE: DEC. 31, 2007
 SIGNED: *ARON J. CUTSFORTH* SEPT. 17, 2007

OREGON DEPARTMENT OF TRANSPORTATION
 HORIZONTAL CONTROL, RECOVERY AND RETRACEMENT SURVEY
 WEAVER ROAD EXTENSION
 OLD PACIFIC HIGHWAY
 DOUGLAS COUNTY

ODOT REGION 3 SEPTEMBER, 2007
 3500 NW STEWART PARKWAY NO SCALE
 ROSEBURG, OR. 97470 KEY # 14085 SHEET 2 OF 7

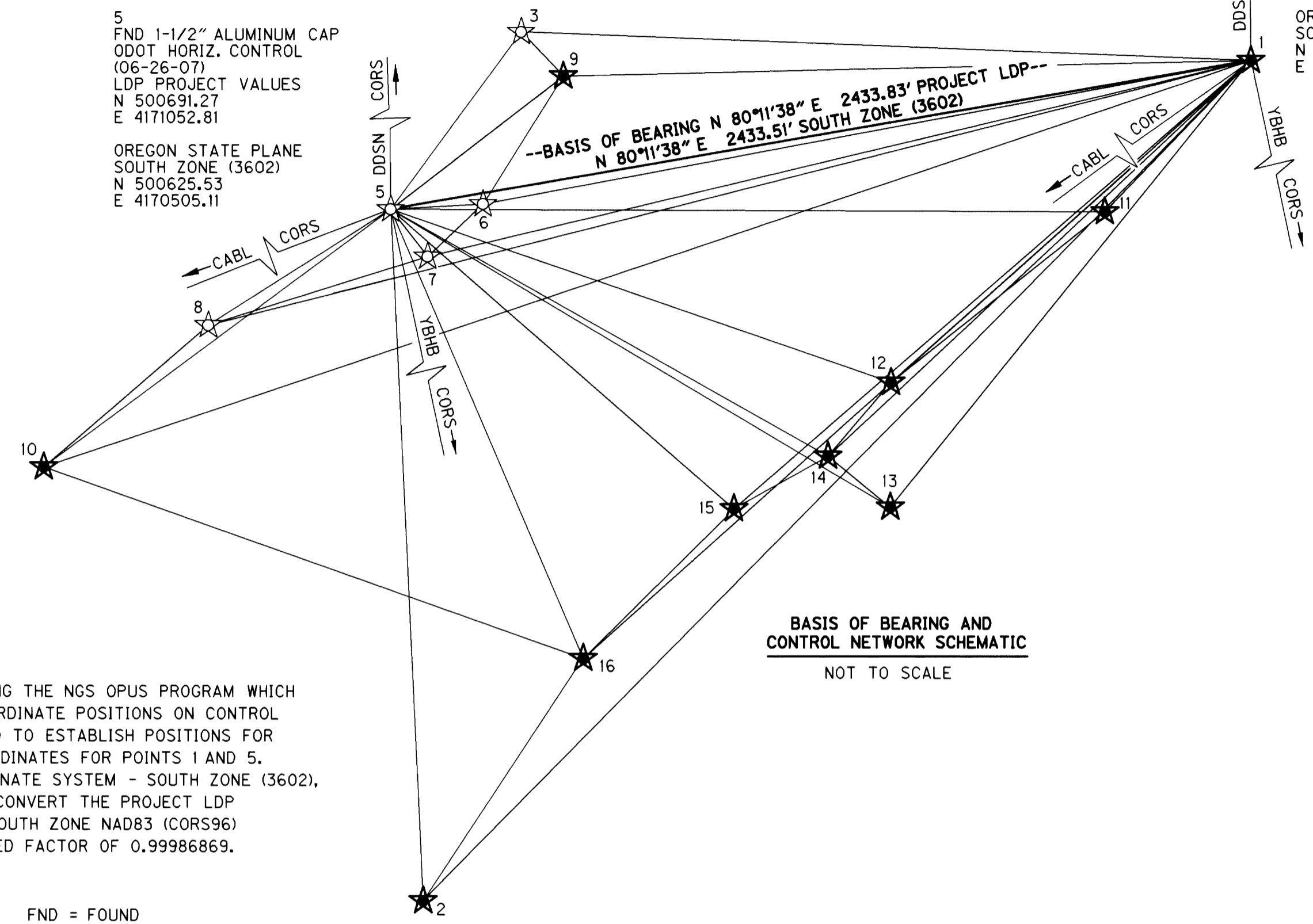
DESIGNED: ARON CUTSFORTH PROJ. NO. 19-84.07
 DRAWN: R. BEAUSOLEIL CHK'D: ANDY AUSLAND

NE 1/4 SEC 32 T29S R5W WM
 SE 1/4 SEC 32 T29S R5W WM
 SW 1/4 SEC 33 T29S R5W WM

FILED
 Date: 9-17-2007 By: JC
 This survey consists of:
 Map: ST HWY 99-005 A-G
 Narrative:
 Corner Rpt:
 DOUGLAS COUNTY SURVEYOR

1 SET MAG & WASHER
 OBEC CONTROL
 (06-26-07)
 LDP PROJECT VALUES
 N 501105.79
 E 4173451.08
 OREGON STATE PLANE
 SOUTH ZONE (3602)
 N 501039.99
 E 4172903.07

5 FND 1-1/2" ALUMINUM CAP
 ODOT HORIZ. CONTROL
 (06-26-07)
 LDP PROJECT VALUES
 N 500691.27
 E 4171052.81
 OREGON STATE PLANE
 SOUTH ZONE (3602)
 N 500625.53
 E 4170505.11



BASIS OF BEARING AND
 CONTROL NETWORK SCHEMATIC
 NOT TO SCALE

CONTROL NARRATIVE

PROJECT: WEAVER ROAD EXTENSION
 LOCATION: DOUGLAS COUNTY
 ODOT KEY NUMBER: 14085
 OBEC PROJECT NUMBER: 19-84.07
 SURVEY DATUM:
 HORIZONTAL - NAD83 (CORS96) EPOCH 2002 (INTERNATIONAL FEET)
 VERTICAL - NAVD 88 (INTERNATIONAL FEET)

PRIMARY HORIZONTAL CONTROL WAS BROUGHT INTO THE PROJECT USING THE NGS OPUS PROGRAM WHICH HELD CORS STATIONS "DDS", "CABL", AND "YBHB" TO ESTABLISH COORDINATE POSITIONS ON CONTROL POINTS 1 AND 5. A SUBSEQUENT STATIC GPS SURVEY WAS PERFORMED TO ESTABLISH POSITIONS FOR POINTS 2, 3 AND 6 THROUGH 16, BY HOLDING THE OPUS-DERIVED COORDINATES FOR POINTS 1 AND 5. THE COORDINATE SYSTEM WAS HELD AT OREGON STATE PLANE COORDINATE SYSTEM - SOUTH ZONE (3602), UNTIL ALL FIELD SURVEYING AND ADJUSTMENTS WERE COMPLETE. TO CONVERT THE PROJECT LDP COORDINATES TO THE OREGON STATE PLANE COORDINATE SYSTEM - SOUTH ZONE NAD83 (CORS96) EPOCH 2002, MULTIPLY THE LDP COORDINATE VALUES BY THE COMBINED FACTOR OF 0.99986869.

AERIAL PHOTO PREMARK TABLE

FND = FOUND
 RPC = RED PLASTIC CAP

PT. ID.	LDP NORTHING	LDP EASTING	DATE	DESCRIPTION
3000	499640.08	4171761.15	7-16-2007	SET MAGNAIL W/PAINTED PREMARK
3001	499781.05	4172421.00	7-16-2007	SET MAGNAIL W/PAINTED PREMARK
3002	500172.51	4172961.80	7-16-2007	SET MAGNAIL W/PAINTED PREMARK
3003	500382.12	4170481.36	7-16-2007	SET MAGNAIL W/PAINTED PREMARK
3004	500807.80	4171336.28	7-16-2007	SET MAGNAIL W/PAINTED PREMARK
3005	501556.27	4171802.57	7-16-2007	SET MAGNAIL W/PAINTED PREMARK

NETWORK POINT COORDINATE TABLE

PT. ID.	LDP NORTHING	LDP EASTING	DATE	DESCRIPTION
1	501105.79	4173451.08	6-26-2007	SET MAGNAIL & WASHER STAMPED "OBEC CONTROL"
2	498763.70	4171142.76	6-26-2007	SET MAGNAIL & WASHER STAMPED "OBEC CONTROL"
3	501185.45	4171417.11	6-26-2007	FND 5/8" IRON ROD W/ 1-1/2" ALUMINUM CAP "ODOT HORIZ. CONTROL 3", FLUSH
5	500691.27	4171052.81	6-26-2007	FND 5/8" IRON ROD W/ 1-1/2" ALUMINUM CAP "ODOT HORIZ. CONTROL 5", FLUSH
6	500705.80	4171310.30	6-26-2007	FND 5/8" IRON ROD W/ 1-1/2" ALUMINUM CAP "ODOT HORIZ. CONTROL 6", FLUSH
7	500559.43	4171155.70	6-26-2007	FND 5/8" IRON ROD W/ 1-1/2" ALUMINUM CAP "ODOT HORIZ. CONTROL 7", FLUSH
8	500367.47	4170544.19	6-26-2007	FND 5/8" IRON ROD W/ 1-1/2" ALUMINUM CAP "ODOT HORIZ. CONTROL 8", FLUSH
9	501062.03	4171534.48	6-26-2007	SET MAGNAIL & WASHER STAMPED "OBEC CONTROL"
10	499972.03	4170085.43	6-26-2007	SET MAGNAIL & WASHER STAMPED "OBEC CONTROL"
11	500684.20	4173044.05	6-26-2007	SET MAGNAIL & WASHER STAMPED "OBEC CONTROL"
12	500208.05	4172447.57	6-26-2007	SET 5/8" x 30" REBAR W/RPC STAMPED "OBEC CONTROL"
13	499860.63	4172445.90	6-26-2007	SET MAGNAIL & WASHER STAMPED "OBEC CONTROL"
14	500002.64	4172272.12	6-26-2007	SET MAGNAIL & WASHER STAMPED "OBEC CONTROL"
15	499856.69	4172009.77	6-26-2007	SET 5/8" x 30" REBAR W/RPC STAMPED "OBEC CONTROL"
16	499439.58	4171589.35	6-26-2007	SET MAGNAIL & WASHER STAMPED "OBEC CONTROL"

LEGEND

- ☆ FOUND GPS NETWORK POINT
- ★ SET GPS NETWORK POINT
- ☆-☆ LINES OF OBSERVATION

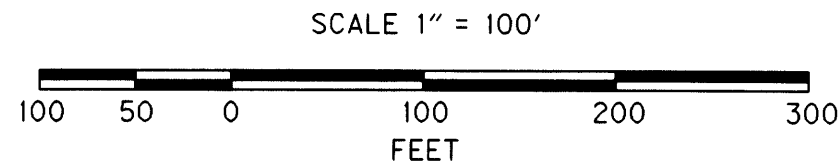
ENGLISH
 REGISTERED PROFESSIONAL LAND SURVEYOR
 ARON J. CUTSFORTH
 OREGON JULY 12, 2005
 65696
 RENEWAL DATE: DEC. 31, 2007
 SIGNED: SEPT. 17, 2007

OBEC CONSULTING ENGINEERS
 Corporate Office: 920 COUNTRY CLUB ROAD, SUITE 100B EUGENE, OREGON 97401-6089, 541-683-6090
 2235 MISSION STREET SE, SUITE 100 SALEM, OREGON 97302-1295, 503-589-4100
 1335 POPLAR DRIVE MEDFORD, OREGON 97504-5207, 541-774-5590
 5005 SW MEADOWS ROAD, SUITE 120 LAKE OSWEGO, OREGON 97035, 503-620-6103

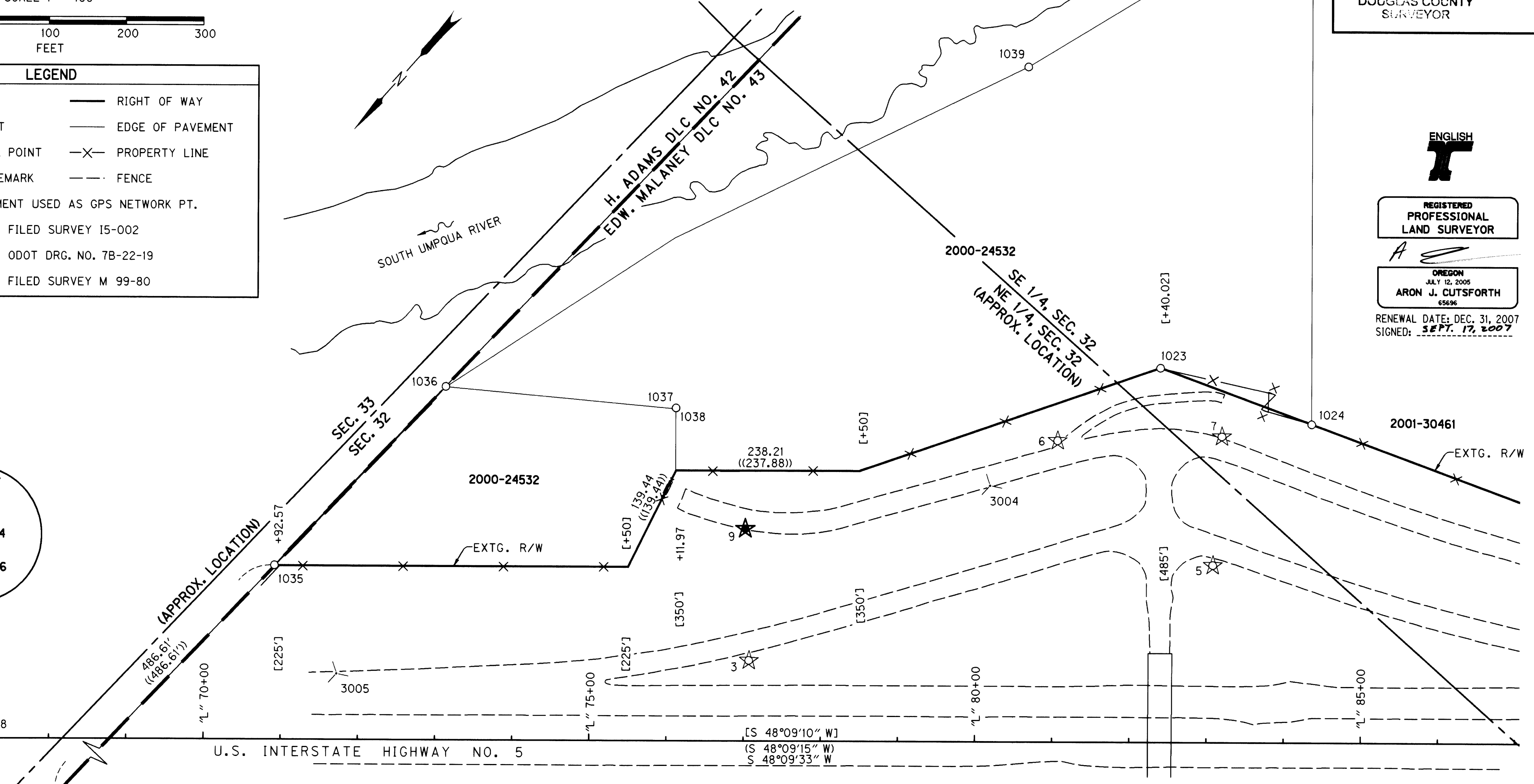
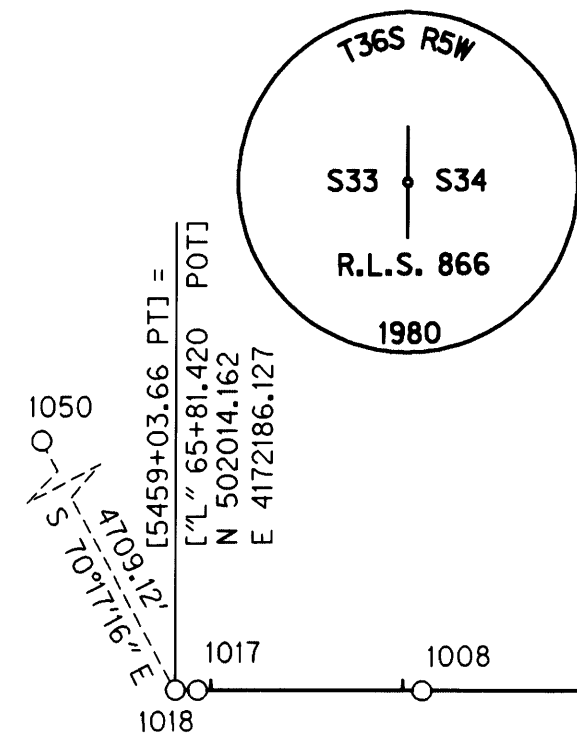
OREGON DEPARTMENT OF TRANSPORTATION
 HORIZONTAL CONTROL, RECOVERY AND RETRACEMENT SURVEY
 WEAVER ROAD EXTENSION
 OLD PACIFIC HIGHWAY
 DOUGLAS COUNTY
 ODOT REGION 3 SEPTEMBER, 2007
 3500 NW STEWART PARKWAY NO SCALE
 ROSEBURG, OR. 97470 KEY # 14085 SHEET 3 OF 7
 DESIGNED: ARON CUTSFORTH PROJ. NO. 19-84.07
 DRAWN: R. BEAUSOLEIL CHK'D: ANDY AUSLAND

NE 1/4 SEC 32 T29S R5W WM
SE 1/4 SEC 32 T29S R5W WM

FILED
Date: 9-17-2007 By: JC
This survey consists of:
Map: ST HWY 99-005 A-G
Narrative:
Corner Rpt:
DOUGLAS COUNTY
SURVEYOR



LEGEND	
○	FOUND MONUMENT
□	CALCULATED POINT
★	SET GPS NETWORK POINT
✱	AERIAL PHOTO PREMARK
☆	FOUND GPS MONUMENT USED AS GPS NETWORK PT.
()	RECORD DATA PER FILED SURVEY I5-002
[]	RECORD DATA PER ODOT DRG. NO. 7B-22-19
(())	RECORD DATA PER FILED SURVEY M 99-80
—	RIGHT OF WAY
—	EDGE OF PAVEMENT
-X-	PROPERTY LINE
- - -	FENCE



ENGLISH
REGISTERED
PROFESSIONAL
LAND SURVEYOR
ARON J. CUTSFORTH
OREGON
JULY 12, 2005
65696
RENEWAL DATE: DEC. 31, 2007
SIGNED: 9.17.2007

RECOVERED MONUMENT LIST (SEE SHEET 5 FOR CALCULATED POINT TABLE)

PT. NO.	LDP NORTHING	LDP EASTING	STATION	OFFSET	DATE	DESCRIPTION & REFERENCE DOCUMENTS
1008	501928.59	4172090.24	67+09.94	0.21' RT	07-18-2007	FND 5/8" IRON ROD W/ 1-1/2" ALUMINUM CAP "STATE HWY.", DOWN 1.0', SHOWN PER M 129-39
1017	502006.34	4172177.49	65+93.07	0.07' LT	07-23-2007	FND 3" BRASS DISK SET IN CONC "STATE HIGHWAY DEPARTMENT, BM NO. R565", DN 0.6', SHOWN PER M 129-39
1018	502014.16	4172186.13	65+81.42	0.00'	07-23-2007	FND 5/8" IRON ROD W/ 1-1/2" ALUMINUM CAP "OREGON STATE HWY. DEPT. - L PT 3459+03.66", DOWN 0.3', SHOWN PER M 129-39
1023	500546.86	4171274.15	82+39.63	484.80' LT	07-23-2007	FND 5/8" IRON ROD W/ 1-1/2" ALUMINUM CAP "OREGON STATE HWY. DEPT.", FLUSH
1024	500470.07	4171079.66	84+35.75	412.27' LT	08-08-2007	FND 5/8" IRON ROD W/YPC "LS 866", EXPOSED 0.7', PER M99-80
1035	501505.76	4171956.26	70+91.81	225.42' LT	08-08-2007	FND 5/8" IRON ROD W/YPC "LS 866", FLUSH, PER M99-80
1036	501185.12	4171946.26	N/A	N/A	08-08-2007	FND 5/8" IRON ROD, DOWN 0.6', PER M99-80
1037	501005.81	4171706.22	N/A	N/A	08-08-2007	FND 5/8" IRON ROD, W/BROKEN CAP, BENT NORTHERLY, FLUSH, PER M99-80
1038	501005.76	4171706.01	N/A	N/A	08-08-2007	FND 5/8" IRON ROD, BENT NORTHERLY, FLUSH, NO RECORD
1039	500371.54	4171662.47	N/A	N/A	08-08-2007	FND 1" I.D. PIPE, FLUSH, PER CS 46/157
1040	499986.45	4171512.51	N/A	N/A	08-08-2007	FND 5/8" IRON ROD W/YPC "LS 866", FLUSH, PER M99-80
1050	500425.80	4176619.29	N/A	N/A	08-16-2007	FND 1" I.D. IRON PIPE W/2-1/2" BRASS CAP "T29S R5W, S33 S34, R.L.S. 866, 1980", EXP. 0.4', PER D.C.S.O.

FND = FOUND
I.D. = INSIDE DIAMETER
YPC = YELLOW PLASTIC CAP

FILE NAME: 14085ret.dgn

OBEC CONSULTING ENGINEERS
Corporate Office: 920 COUNTRY CLUB ROAD, SUITE 100B EUGENE, OREGON 97401-6089, 541-683-6090
2235 MISSION STREET SE, SUITE 100 SALEM, OREGON 97302-1295, 503-589-4100
1335 POPLAR DRIVE MEDFORD, OREGON 97504-5207, 541-774-5590
5005 SW MEADOWS ROAD, SUITE 120 LAKE OSWEGO, OREGON 97035, 503-620-6103

OREGON DEPARTMENT OF TRANSPORTATION
HORIZONTAL CONTROL, RECOVERY AND RETRACEMENT SURVEY
WEAVER ROAD EXTENSION
OLD PACIFIC HIGHWAY
DOUGLAS COUNTY

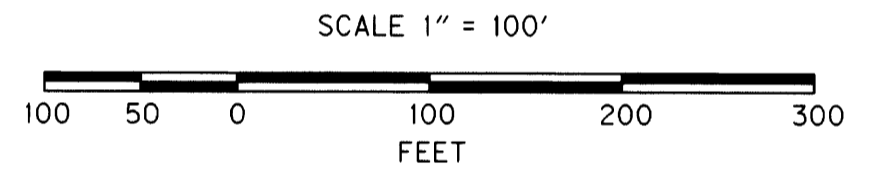
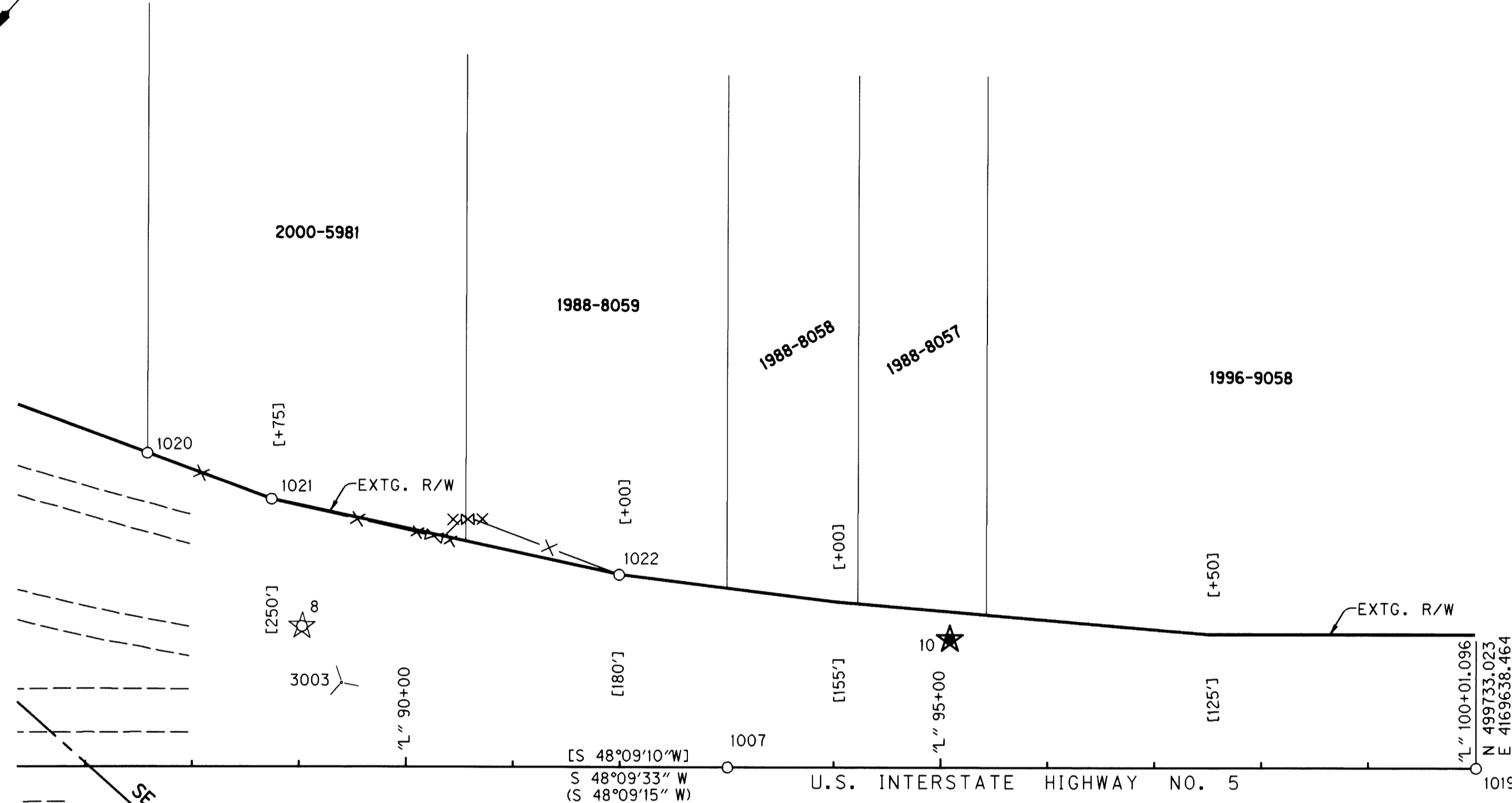
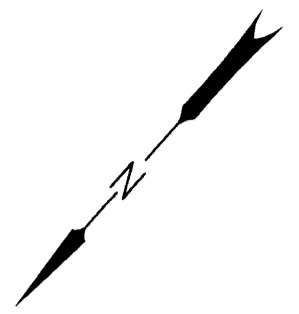
ODOT REGION 3
3500 NW STEWART PARKWAY
ROSEBURG, OR. 97470
DESIGNED: ARON CUTSFORTH
DRAWN: R. BEAUSOLEIL

SEPTEMBER, 2007
SCALE 1" = 100'
KEY # 14085
SHEET 4 OF 7
PROJ. NO. 19-84.07
CHK'D: ANDY AUSLAND

ST. HWY 99-005 D

NE 1/4 SEC 32 T29S R5W WM
SE 1/4 SEC 32 T29S R5W WM

FILED
Date: 9-17-2007 By: JC
This survey consists of:
Map: ST HWY - 99-005 A-G
Name: _____
Corner pts: _____
DOUGLAS COUNTY
SURVEYOR



LEGEND			
○	FOUND MONUMENT	—	RIGHT OF WAY
★	SET GPS NETWORK POINT	—	EDGE OF PAVEMENT
☆	FOUND GPS MONUMENT USED AS GPS NETWORK PT.	-X-	PROPERTY LINE
⊕	AERIAL PHOTO PREMARK	- - -	FENCE
()	RECORD DATA PER FILED SURVEY I5-002		
[]	RECORD DATA PER ODOT DRG. NO. 7B-22-19		
(())	RECORD DATA PER FILED SURVEY M 99-80		

ENGLISH
T
REGISTERED
PROFESSIONAL
LAND SURVEYOR
A
OREGON
JULY 12, 2005
ARON J. CUTSFORTH
65696
RENEWAL DATE: DEC. 31, 2007
SIGNED: SEPT. 17, 2007

FILE NAME: 14085ret.dgn

CALCULATED POINT LIST (NO MONUMENT FOUND OR SET)

FND = FOUND
YPC = YELLOW PLASTIC CAP

PT. NO.	LDP NORTHING	LDP EASTING	STATION	OFFSET	DESCRIPTION & REFERENCE DOCUMENTS
5000	501992.18	4171970.12	N/A	N/A	NORTHEAST CORNER OF DLC NO. 43
5001	498652.37	4171868.35	N/A	N/A	SOUTHWEST CORNER OF DLC NO. 42

RECOVERED MONUMENT LIST

PT. NO.	LDP NORTHING	LDP EASTING	STATION	OFFSET	DATE	DESCRIPTION & REFERENCE DOCUMENTS
1007	500200.08	4170160.09	93+00.93	0.00'	07-18-2007	FND 3" BRASS DISK SET IN CONC, "ST HWY DEPT. BM NO. W565", FLUSH, SHOWN PER M 129-39
1019	499733.02	4169638.46	100+01.10	0.00'	07-23-2007	FND 5/8" IRON ROD W/ 1-1/2" ALUM. CAP "OREGON ST. HWY. DEPT." DOWN 0.3', SHOWN PER M129-39
1020	500343.93	4170759.89	87+58.12	292.94' LT	07-23-2007	FND 5/8" IRON ROD W/YPC "R BROWN PLS 2391" EXPOSED 0.1', PER M136-76
1021	500298.37	4170644.59	88+74.40	249.96' LT	07-23-2007	FND 5/8" IRON ROD W/ 1-1/2" ALUMINUM CAP, ILLEGIBLE, DOWN 0.2', SHOWN PER M136-76
1022	500133.87	4170355.63	91+99.42	179.76' LT	07-23-2007	FND 5/8" IRON ROD W/ 1-1/2" ALUMINUM CAP, ILLEGIBLE, DOWN 0.2', SHOWN PER CS 46-157

OBEC CONSULTING ENGINEERS
Corporate Office: 920 COUNTRY CLUB ROAD, SUITE 100B EUGENE, OREGON 97401-6089, 541-683-6090
2235 MISSION STREET SE, SUITE 100 SALEM, OREGON 97302-1295, 503-589-4100
1335 POPLAR DRIVE MEDFORD, OREGON 97504-5207, 541-774-5590
5005 SW MEADOWS ROAD, SUITE 120 LAKE OSWEGO, OREGON 97035, 503-620-6103
www.obec.com

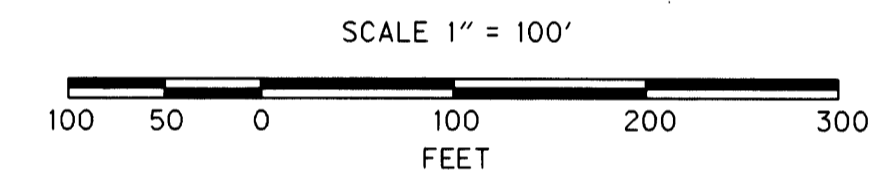
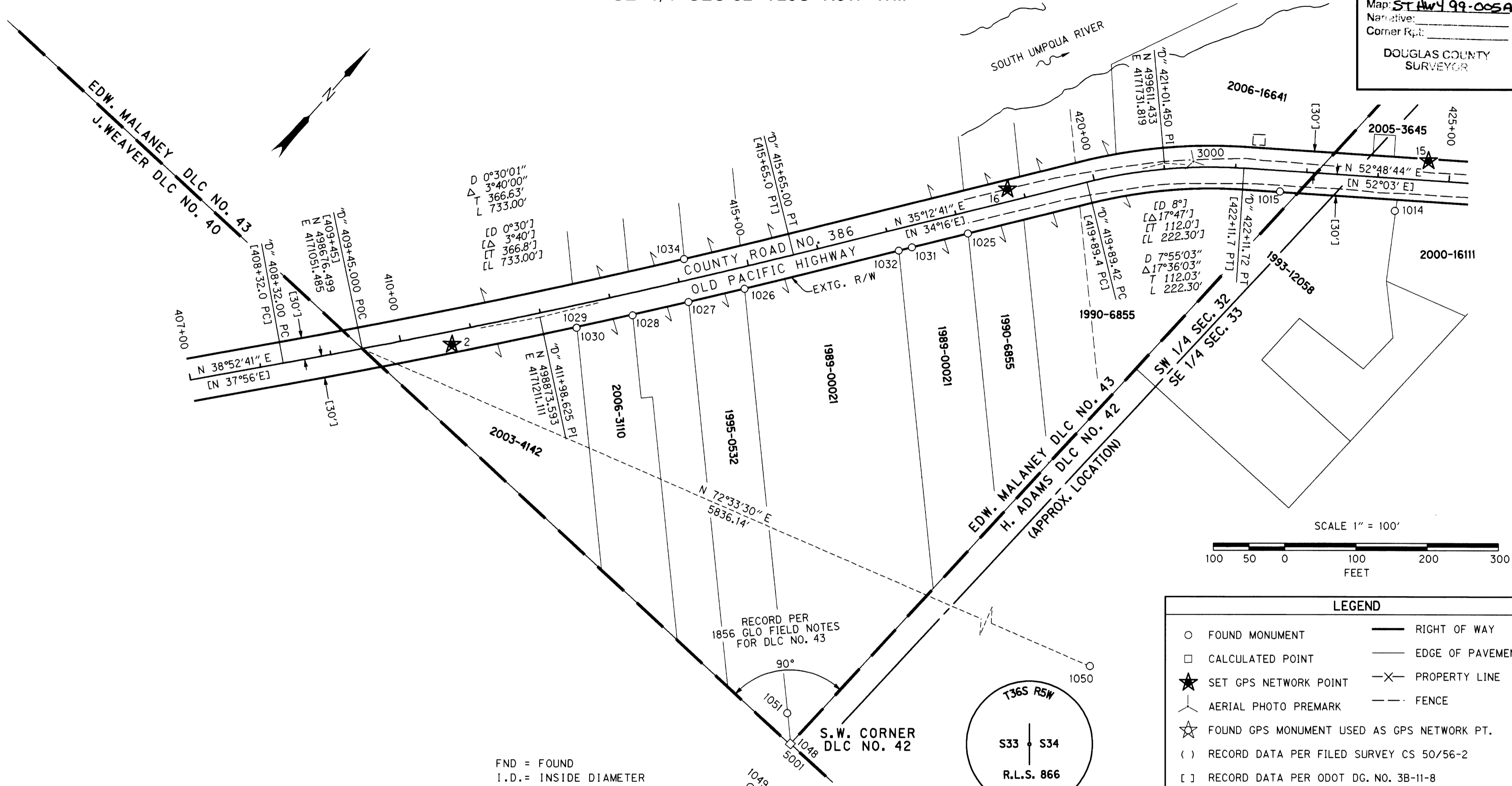
OREGON DEPARTMENT OF TRANSPORTATION
HORIZONTAL CONTROL, RECOVERY AND RETRACEMENT SURVEY
WEAVER ROAD EXTENSION
OLD PACIFIC HIGHWAY
DOUGLAS COUNTY

ODOT REGION 3
3500 NW STEWART PARKWAY
ROSEBURG, OR. 97470
KEY # 14085
SEPTEMBER, 2007
SCALE 1" = 100'
SHEET 5 OF 7

DESIGNED: ARON CUTSFORTH
DRAWN: R. BEAUSOLEIL
CHK'D: ANDY AUSLAND
PROJ. NO. 19-84.07

SW 1/4 SEC 33 T29S R5W WM
SE 1/4 SEC 32 T29S R5W WM

FILED
Date: 9-17-2007 By: JC
This survey consists of:
Map: ST HWY 99-005A-G
Narrative:
Corner Rpt:
DOUGLAS COUNTY SURVEYOR

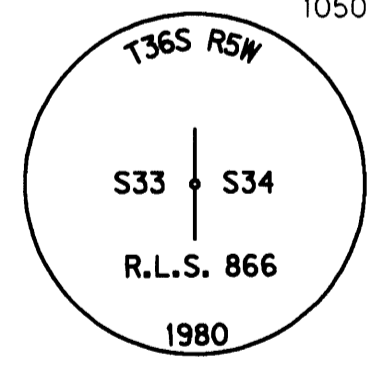


LEGEND	
○	FOUND MONUMENT
□	CALCULATED POINT
★	SET GPS NETWORK POINT
✱	AERIAL PHOTO PREMARK
☆	FOUND GPS MONUMENT USED AS GPS NETWORK PT.
()	RECORD DATA PER FILED SURVEY CS 50/56-2
[]	RECORD DATA PER ODOT DG. NO. 3B-11-8
(())	RECORD DATA PER FILED SURVEY M 99-80
—	RIGHT OF WAY
—	EDGE OF PAVEMENT
—X—	PROPERTY LINE
- - -	FENCE

RECOVERED MONUMENT LIST (SEE SHEET 5 FOR CALCULATED POINT TABLE)

PT. NO.	LDP NORTHING	LDP EASTING	STATION	OFFSET	DATE	DESCRIPTION & REFERENCE DOCUMENTS
1014	499772.75	4172019.91	"D" 424+26.70	45.62' RT	07-18-2007	FND 5/8" IRON ROD W/YPC "R BROWN PLS 2391" EXPOSED 0.2', PER 1997-0076
1015	499687.56	4171880.42	"D" 422+64.08	29.17' RT	07-18-2007	FND 1/2" IRON ROD, BENT EAST, EXPOSED 0.3', NO RECORD
1025	499255.94	4171588.23	"D" 418+09.91	30.00' RT	07-23-2007	FND 1/2" I.D. IRON PIPE, EXPOSED 0.2', PER CS 50/56-2
1026	499092.02	4171401.87	"D" 414+87.03	30.18' RT	07-23-2007	FND 1/2" REBAR, DOWN 0.2', PER CS 50/562
1027	499026.42	4171354.59	"D" 414+06.38	30.21' RT	07-23-2007	FND 1-1/4" I.D. IRON PIPE, DOWN 0.5', PER CS 50/56-2
1028	498960.80	4171307.61	"D" 413+25.90	31.06' RT	07-23-2007	FND 3/4" I.D. IRON PIPE, DOWN 0.2', PER CS 50/56-2
1029	498896.02	4171259.64	"D" 412+45.51	31.19' RT	07-23-2007	FND 1/4" BOLT, DOWN 0.2', NO RECORD
1030	498895.94	4171259.53	"D" 412+45.38	31.15' RT	07-23-2007	FND 5/8" REBAR, BENT SOUTHWEST, DOWN 0.6', PER CS 50/56-2
1031	499289.94	4171541.58	"D" 417+29.09	29.94' RT	08-08-2007	FND 1/2" IRON ROD, DOWN 1.0', CS 50/56-2
1032	499274.30	4171530.61	"D" 417+09.99	30.00' RT	08-08-2007	FND 1/2" I.D. IRON PIPE, DOWN 0.1', NO RECORD
1034	499067.88	4171310.39	"D" 414+13.96	29.92' LT	08-08-2007	FND 1/2" I.D. IRON PIPE, DOWN 0.7', PER CS 50/56-1
1048	498652.38	4171868.35	N/A	N/A	08-16-2007	FND 3/4" I.D. IRON PIPE, EXPOSED 0.5', BENT SOUTH, AS NOTED PER D.C.S.O.
1049	498569.39	4171865.44	N/A	N/A	08-16-2007	FND 1" I.D. IRON PIPE W/ 2-1/2" BRASS CAP "DOUGLAS COUNTY SURVEYOR-DLC 42 N. 82 FT.", FLUSH, PER D.C.S.O.
1050	500425.80	4176619.29	N/A	N/A	08-16-2007	FND 1" I.D. IRON PIPE W/ 2-1/2" BRASS CAP "T29S R5W, S33 S34, R.L.S. 866, 1980", EXP. 0.4', PER D.C.S.O.
1051	498681.95	4171836.74	N/A	N/A	08-16-2007	FND 5/8" IRON ROD W/YPC "LS 866", EXPOSED 0.4', PER M 99-10

FND = FOUND
I.D. = INSIDE DIAMETER
YPC = YELLOW PLASTIC CAP
D.C.S.O. = DOUGLAS COUNTY SURVEYOR'S OFFICE



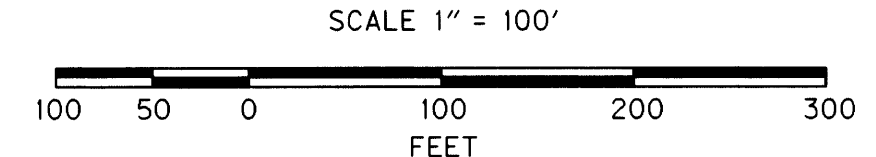
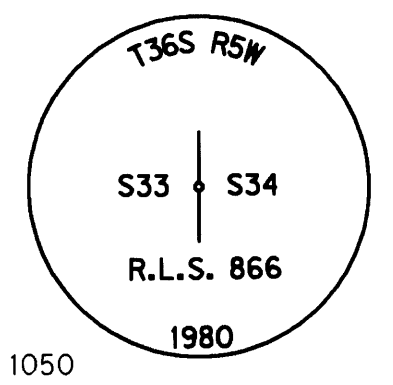
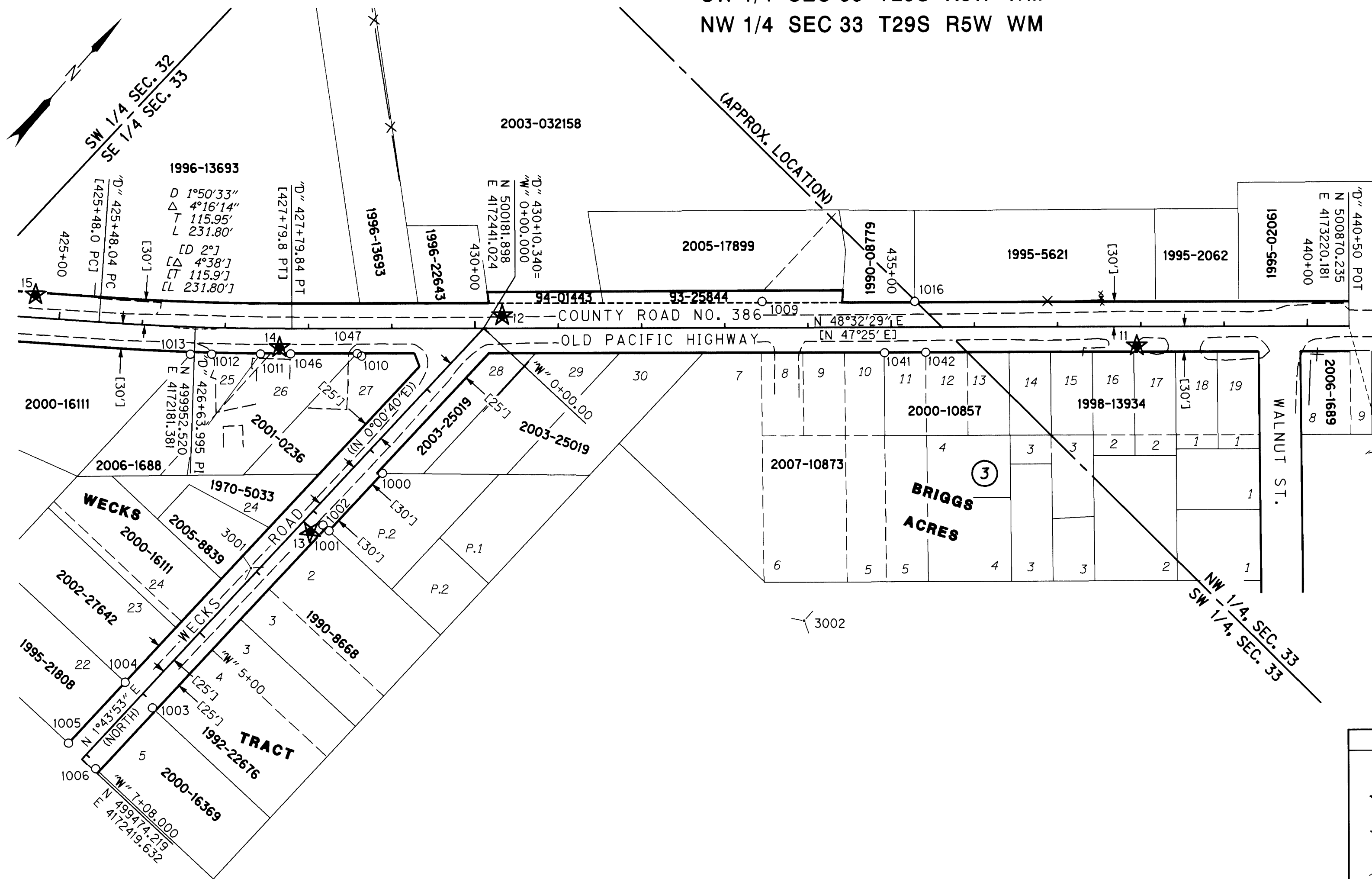
ENGLISH
REGISTERED PROFESSIONAL LAND SURVEYOR
ARON J. CUTSFORTH
OREGON JULY 12, 2005 65696
RENEWAL DATE: DEC. 31, 2007
SIGNED: SEPT. 17, 2007

OBEC CONSULTING ENGINEERS
Corporate Office: 920 COUNTRY CLUB ROAD, SUITE 100B EUGENE, OREGON 97401-6089, 541-683-6090
2235 MISSION STREET SE, SUITE 100 SALEM, OREGON 97302-1295, 503-589-4100
1335 POPLAR DRIVE MEDFORD, OREGON 97504-5207, 541-774-5590
5005 SW MEADOWS ROAD, SUITE 120 LAKE OSWEGO, OREGON 97035, 503-620-6103
www.obec.com

OREGON DEPARTMENT OF TRANSPORTATION
HORIZONTAL CONTROL, RECOVERY AND RETRACEMENT SURVEY
WEAVER ROAD EXTENSION
OLD PACIFIC HIGHWAY
DOUGLAS COUNTY
ODOT REGION 3
3500 NW STEWART PARKWAY
ROSEBURG, OR. 97470
DESIGNED: ARON CUTSFORTH
DRAWN: R. BEAUSOLEIL
SEPTEMBER, 2007
SCALE 1" = 100'
KEY # 14085
PROJ. NO. 19-84.07
CHK'D: ANDY AUSLAND

FILED
 Date: 9-17-2007 By: JC
 This survey consists of:
 Map: ST HWY 99-005A-G
 Narrative:
 Corner Rpt:
 DOUGLAS COUNTY
 SURVEYOR

SW 1/4 SEC 33 T29S R5W WM
 NW 1/4 SEC 33 T29S R5W WM



LEGEND	
○	FOUND MONUMENT
★	SET GPS NETWORK POINT
☆	FOUND GPS MONUMENT USED AS GPS NETWORK PT.
✈	AERIAL PHOTO PREMARK
()	RECORD DATA PER FILED SURVEY M 99-80
[]	RECORD DATA PER ODOT DG. NO. 38-11-8
()	RECORD DATA PER FILED SURVEY VOL. 6, PAGE 59 (WECKS TRACT)
—	RIGHT OF WAY
—	EDGE OF PAVEMENT
—X—	PROPERTY LINE
- - -	FENCE

FND = FOUND
 I.D. = INSIDE DIAMETER
 YPC = YELLOW PLASTIC CAP

RECOVERED MONUMENT LIST

PT. NO.	LDP NORTHING	LDP EASTING	STATION	OFFSET	DATE	DESCRIPTION & REFERENCE DOCUMENTS
1000	499970.68	4172464.74	"W" 2+10.40	30.08' LT	07-18-2007	FND 5/8" IRON ROD W/YPC, FLUSH, PER 1995-0002
1001	499876.43	4172461.97	"W" 3+04.70	30.16' LT	07-18-2007	FND 5/8" IRON ROD W/YPC "R BROWN PLS 2391", FLUSH, PER 1995-0002
1002	499876.74	4172451.99	"W" 3+04.69	20.18' LT	07-18-2007	FND 1/2" I.D. IRON PIPE, DOWN 0.3', PER VOL. 6, PAGE 59
1003	499576.81	4172442.97	"W" 6+04.76	20.23' LT	07-18-2007	FND 1/2" I.D. IRON PIPE, DOWN 0.2', PER VOL. 6, PAGE 59
1004	499578.19	4172397.96	"W" 6+04.74	24.80' RT	07-18-2007	FND 5/8" IRON ROD W/YPC "R BROWN PLS 2391", FLUSH, PER M116-63
1005	499478.26	4172394.75	"W" 7+04.72	25.00' RT	07-18-2007	FND 5/8" IRON ROD W/YPC "R BROWN PLS 2391", DOWN 0.3', PER M116-63
1006	499476.82	4172439.72	"W" 7+04.80	20.00' LT	07-18-2007	FND 1-1/2" IRON PIPE, DOWN 0.3', NO RECORD
1009	500426.92	4172671.02	"D" 433+44.94	31.35' LT	07-18-2007	FND 1-1/4" I.D. IRON PIPE, DOWN 0.4', PER CS 51/130-3
1010	500059.86	4172352.90	"D" 428+63.50	33.11' RT	07-18-2007	FND 1-1/2" I.D. IRON PIPE, BENT WEST, EXPOSED 1.1', NO RECORD
1011	499981.58	4172260.10	"D" 427+42.49	30.57' RT	07-18-2007	FND 5/8" IRON ROD W/YPC, CAP ILLEGIBLE, FLUSH, PER M121-79
1012	499942.71	4172216.19	"D" 426+84.44	31.87' RT	07-18-2007	FND 1/2" IRON ROD, FLUSH, SHOWN PER M121-79
1013	499925.85	4172197.06	"D" 426+59.22	32.74' RT	07-18-2007	FND 3/4" IRON ROD, FLUSH, SHOWN PER M121-79
1016	500548.18	4172808.70	"D" 435+28.39	31.08' LT	07-18-2007	FND 1" I.D. IRON PIPE, BENT NORTH, DOWN 0.6', PER 42-413
1041	500478.03	4172822.04	"D" 434+91.95	30.33' RT	08-08-2007	FND RAIL ROAD SPIKE, DOWN 0.3', NO RECORD
1042	500510.90	4172858.74	"D" 435+41.21	30.00' RT	08-08-2007	FND 1/2" IRON ROD, DOWN 0.3', PER VOL. 7, PAGE 42
1046	500005.61	4172287.21	"D" 427+78.37	30.28' RT	08-08-2007	FND 5/8" IRON ROD, FLUSH, PER M121-79
1047	500058.68	4172346.86	"D" 428+58.19	30.00' RT	08-08-2007	FND 5/8" IRON ROD W/YPC "IE ENG", DOWN 0.1', PER M121-79
1050	500425.80	4176619.29	N/A	N/A	08-16-2007	FND 1" I.D. IRON PIPE W/ 2-1/2" BRASS CAP "T29S R5W, S33 S34, R.L.S. 866, 1980", EXP. 0.4', PER D.C.S.O.

ENGLISH
 REGISTERED PROFESSIONAL LAND SURVEYOR
 ARON J. CUTSFORTH
 OREGON JULY 12, 2005
 65696
 RENEWAL DATE: DEC. 31, 2007
 SIGNED: SEPT. 17, 2007

OBEC CONSULTING ENGINEERS
 Corporate Office: 920 COUNTRY CLUB ROAD, SUITE 100B EUGENE, OREGON 97401-6089, 541-683-6090
 2235 MISSION STREET SE, SUITE 100 SALEM, OREGON 97302-1295, 503-589-4100
 1335 POPLAR DRIVE MEDFORD, OREGON 97504-5207, 541-774-5590
 5005 SW MEADOWS ROAD, SUITE 120 LAKE OSWEGO, OREGON 97035, 503-620-6103

OREGON DEPARTMENT OF TRANSPORTATION
 HORIZONTAL CONTROL, RECOVERY AND RETRACEMENT SURVEY
 WEAVER ROAD EXTENSION
 OLD PACIFIC HIGHWAY
 DOUGLAS COUNTY
 ODOT REGION 3
 3500 NW STEWART PARKWAY
 ROSEBURG, OR. 97470
 SEPTEMBER, 2007
 SCALE 1" = 100'
 SHEET 7 OF 7
 DESIGNED: ARON CUTSFORTH
 DRAWN: R. BEAUSOLEIL
 PROJ. NO. 19-84.07
 CHK'D: ANDY AUSLAND