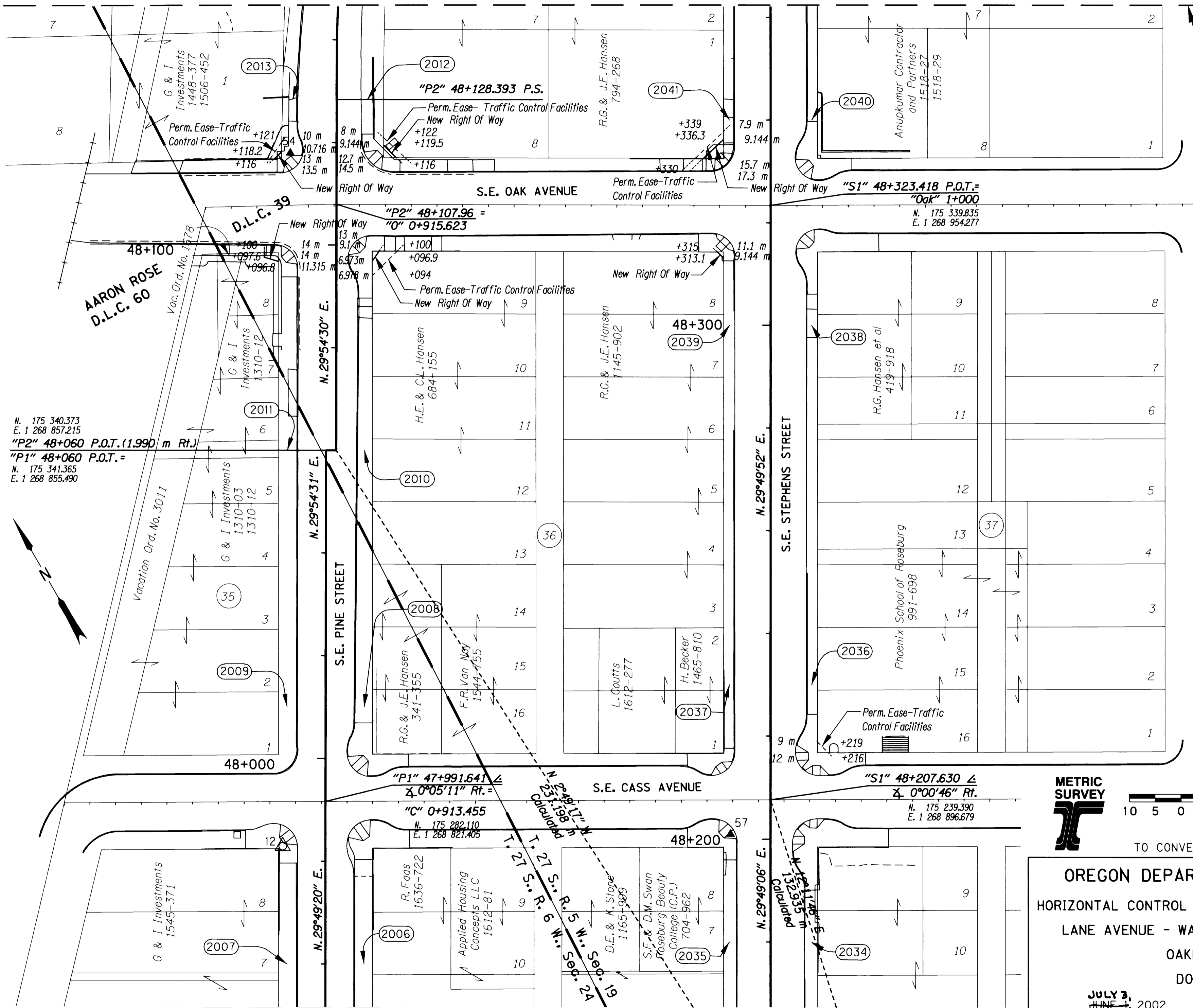


NE 1/4 SECTION 24, T. 27 S., R. 6 W., AND NW 1/4 SECTION 19, T. 27 S., R. 5 W., W.M.

FILED  
 Date: 7/8/2002 By: JP  
 This survey consists of: 5 SHEETS  
 Map: ST. HWY. 99-004 D  
 Narrative:  
 Corner Rpt:  
 DOUGLAS COUNTY  
 SURVEYOR

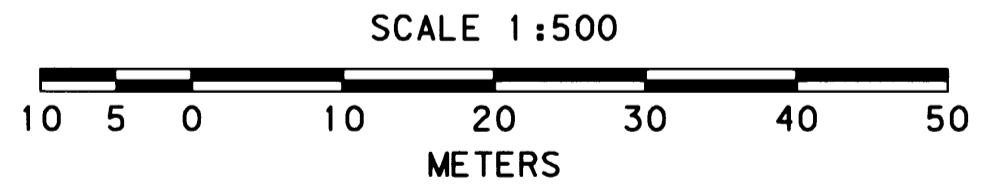
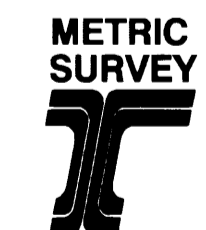
MATCH LINE "B"



N. 175 340.373  
 E. 1 268 857.215  
 "P2" 48+060 P.O.T. (1.990 m Rt.)  
 "P1" 48+060 P.O.T. =  
 N. 175 341.365  
 E. 1 268 855.490

REGISTERED  
 PROFESSIONAL  
 LAND SURVEYOR  
 Christine V. Blevins  
 OREGON  
 JULY 19, 1994  
 CHRISTINE V. BLEVINS  
 2669  
 EXPIRES 12/31/03

LEGEND	
	SET NETWORK POINT
	FOUND MONUMENT USED AS NETWORK POINT
	R/W REFERENCE POINT (SEE SHEET 2 OF 5)
	PROPERTY LINE
	D.L.C. LINE
	RAILROAD
	CURB / EDGE OF CONC.



TO CONVERT METERS TO FEET DIVIDE BY 0.3048

OREGON DEPARTMENT OF TRANSPORTATION  
 HORIZONTAL CONTROL & RIGHT OF WAY MONUMENTATION MAP  
 LANE AVENUE - WASHINGTON AVENUE (ROSEBURG SEC.)  
 OAKLAND-SHADY HIGHWAY  
 DOUGLAS COUNTY

JULY 3, 2002  
 FOR ODOT REGION 3  
 3500 N.W. STEWART PARKWAY, ROSEBURG, OR 97470

KEY #09084 SHEET 4 OF 5