

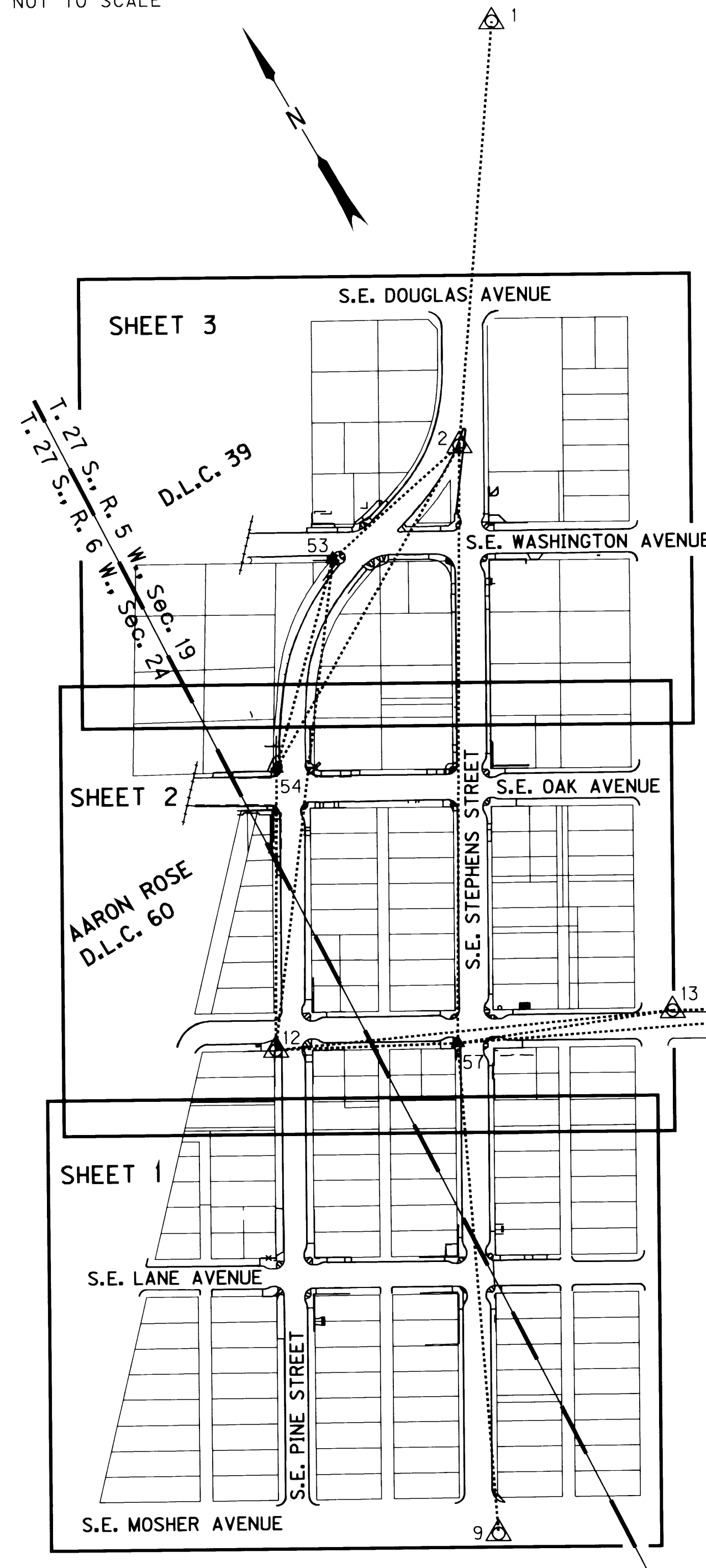
SECTION 24, T. 27 S., R. 6 W., AND SECTION 19, T. 27 S., R. 5 W., W.M.

FILED
 Date: 7/8/2002 By: JP
 This survey consists of: 5 SHEETS
 Map: ST. HWY. 99-004 A
 Narrative:
 Corner Rpt:

DOUGLAS COUNTY
 SURVEYOR

NETWORK SCHEMATIC AND SHEET LAYOUT DIAGRAM

NOT TO SCALE



SURVEY NARRATIVE

THE PURPOSE OF THIS SURVEY IS TO ESTABLISH RIGHT OF WAY MONUMENTATION FOR AN OREGON DEPARTMENT OF TRANSPORTATION (ODOT) PROJECT CALLED "LANE AVE. - WASHINGTON AVE." IN THE CITY OF ROSEBURG. THE SURVEY WAS PERFORMED BY AN ODOT SURVEY CREW ON APRIL 29, 2002. THE ORIGINAL FIELD NOTES ARE ARCHIVED IN SALEM AS BOOK NO. 3824.

THE ORIGINAL HORIZONTAL CONTROL, RECOVERY, AND RETRACEMENT WERE DONE BY A CONSULTANT AND FILED WITH THE DOUGLAS COUNTY SURVEYORS' OFFICE AS MAP #134-24, A-E. CONTROL POINTS FROM THIS SURVEY WERE RECOVERED AND USED AS THE BASIS OF THIS CURRENT RIGHT OF WAY SURVEY. RECOVERED POINTS FROM MAP #134-24 WERE 1, 2, 9, 12, 13, AND 14. THE NETWORK OPTION WAS USED TO ESTABLISH AND REFERENCE THE NEW RIGHT OF WAY AND CONTROLLING CENTERLINE PER OREGON REVISED STATUTE 209.155 (2) (B). USING THE RECOVERED CONTROL POINTS A NEW NETWORK WAS ESTABLISHED THROUGHOUT THE PROJECT AREA WITH THREE NEW NETWORK POINTS INSTALLED (POINTS 53, 54, & 57). REFER TO ODOT RIGHT OF WAY DRAWING NO. 10B-14-16, ALSO KNOWN AS RIGHT OF WAY PROJECT NO. 6843. THE FOLLOWING DEEDS PERTAIN TO THE PURCHASES FOR THIS PROJECT : 1698/944, 2000-17413, 2000-15373, 1723/934, 1729/722, 200018851, 2000-15112, AND 200016845, ALONG WITH ODOT FILE #6843-013.

COORDINATES FOR THIS SURVEY UTILIZED THE LOCAL DATUM PLANE COORDINATES AS SHOWN ON SURVEY MAP #134-24, WHICH WERE CONVERTED FROM OREGON STATE PLANE COORDINATE SYSTEM, SOUTH ZONE, 1983 (1991).

A LEICA TCA1800 TOTAL STATION (SERIAL #416526) WAS USED TO MAKE THE NETWORK OBSERVATIONS. THIS INSTRUMENT HAS A STANDARD ANGULAR ERROR OF +/- 1 SECOND, AND A STANDARD DISTANCE ERROR OF +/- 2 mm, +/- 2 PPM.

THE LEAST SQUARES ADJUSTMENT OF THE NETWORK PRODUCED:

- (1) ANGULAR RESIDUALS (THE AMOUNT THE FIELD OBSERVED ANGLES WERE CHANGED DUE TO THE ADJUSTMENT) 76% WERE WITHIN THREE SECONDS AND 100% WERE WITHIN SEVEN SECONDS.
- (2) DISTANCE RESIDUALS (THE AMOUNT THE FIELD OBSERVED DISTANCES WERE CHANGED DUE TO THE ADJUSTMENT) 100% WERE WITHIN 4 mm.

THERE IS A 95% PROBABILITY THE FINAL POSITIONS OF THE NEW NETWORK POINTS ARE WITHIN THE ERROR ELLIPSES AS SHOWN ON THE "CONFIDENCE LEVEL LIMITS" TABLE SHOWN BELOW.

NETWORK POINT COORDINATE TABLE

PT. NO.	LDP NORTHING	LDP EASTING	DATE	DESCRIPTION
1	175652.791	1269148.152	4-29-02	FND. PK NAIL W/38 mm BRASS WASHER STAMPED "OTAK CONTROL"
2	175484.817	1269032.028	4-29-02	FND. PK NAIL W/38 mm BRASS WASHER STAMPED "OTAK CONTROL"
9	175024.885	1268784.672	4-29-02	FND. PK NAIL W/38 mm BRASS WASHER STAMPED "OTAK CONTROL"
12	175278.712	1268809.869	4-29-02	FND. PK NAIL W/38 mm BRASS WASHER STAMPED "OTAK CONTROL"
13	175199.174	1268983.080	4-29-02	FND. PK NAIL W/38 mm BRASS WASHER STAMPED "OTAK CONTROL"
14	175133.739	1269100.926	4-29-02	FND. PK NAIL W/38 mm BRASS WASHER STAMPED "OTAK CONTROL"
53	175468.211	1268952.220	4-29-02	SET 38 mm BRASS CAP STAMPED "ODOT CONTROL 53" W/BRASS PLUG EPOXIED IN CONC. WALK
54	175395.077	1268878.316	4-29-02	SET 38 mm BRASS CAP STAMPED "ODOT CONTROL 54" W/BRASS PLUG EPOXIED IN CONC. WALK
57	175237.460	1268886.590	4-29-02	SET 38 mm BRASS CAP STAMPED "ODOT CONTROL 57" W/BRASS PLUG EPOXIED IN CONC. WALK

LEGEND

- ▲ SET NETWORK POINT
- △ FOUND MONUMENT USED AS NETWORK POINT
- LINES OF OBSERVATION
- CURB / EDGE OF CONC.
- PROPERTY LINE
- D.L.C. LINE

CONFIDENCE LEVEL LIMITS

POINT ID	SEMI MAJOR	SEMI MINOR	ORIENTATION
57	0.002	0.002	122°28'09"
54	0.003	0.002	138°25'48"
53	0.002	0.002	120°14'40"



REGISTERED
 PROFESSIONAL
 LAND SURVEYOR
 Christine V. Blevins
 OREGON
 JULY 19, 1994
 CHRISTINE V. BLEVINS
 2669
 EXPIRES 12/31/03

OREGON DEPARTMENT OF TRANSPORTATION
 HORIZONTAL CONTROL & RIGHT OF WAY MONUMENTATION MAP
 LANE AVENUE - WASHINGTON AVENUE (ROSEBURG SEC.)
 OAKLAND-SHADY HIGHWAY
 DOUGLAS COUNTY

JULY 3,
 JUNE 1, 2002

FOR ODOT REGION 3

3500 N.W. STEWART PARKWAY, ROSEBURG, OR 97470

KEY #09084

SHEET 1 OF 5

ST. HWY. 99-004 A