

LOCATION HORIZONTAL CONTROL SURVEY AND RECOVERY MAP

FOR THE OREGON DEPARTMENT OF TRANSPORTATION

Located in the SE¹/₄ and NE¹/₄ of Section 2
and the NE¹/₄ of Section 11, T28S, R6W, WM

NARRATIVE :

The purpose of this survey was to establish control for an ODOT Highway project called 'Carnes Road @ Oakland - Shady Highway'. There were four traverses run. The primary traverse (point numbers 70 - 80) was run in 1986. Three secondary traverses were run in 1990 and 1991, using a leg of the primary traverse as a basis of bearing. One secondary traverse used leg 77 - 78 of the primary traverse for its basis of bearing. The other two secondary traverses used leg 76 - 77 of the primary traverse for their basis of bearing.

The basis of bearing for the primary traverse was taken from the Douglas County Public Works Department traverse 'Happy Valley Extension', which was run in October, 1990. The 'Happy Valley Extension' traverse ran through the primary traverse leg 76 - 77. The bearings on this map were rotated to the 'Happy Valley Extension' bearing for the leg 76 - 77. The Basis of Bearing for the 'Happy Valley Extension' traverse were state plane monuments 'Spur' and 'Garrett'.

The coordinates for the primary traverse and secondary traverse were transformed to the state plane coordinates provided by the county for point number 76. The coordinates on this map are Local Datum Plane coordinates. They were computed from measured distances and have not been reduced to state plane coordinates. To reduce the coordinates on this map from Local Datum Plane to Oregon State Grid, NAD 83, South Zone, multiply by 0.999871660.

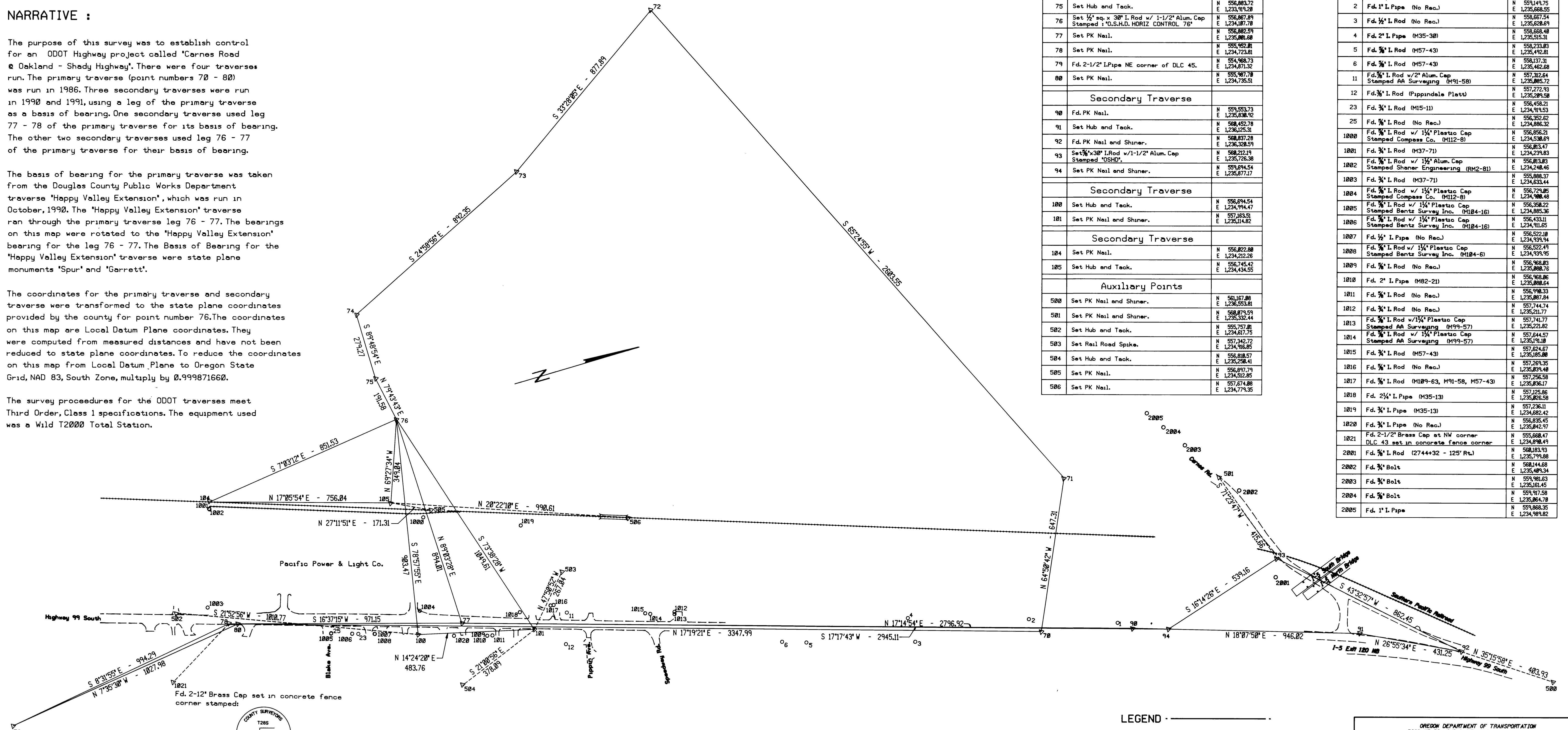
The survey procedures for the ODOT traverses meet Third Order, Class 1 specifications. The equipment used was a Wild T2000 Total Station.

CONTROL TRAVERSE

PT#	DESCRIPTION	NORTHING EASTING
Primary Traverse		
70	Set Hub and Teak.	N 559,183.84 E 1,235,732.38
71	Set Hub and Teak.	N 559,458.99 E 1,235,146.46
72	Set PK Nail.	N 558,375.82 E 1,235,778.93
73	Set Hub and Teak.	N 557,643.49 E 1,233,263.06
74	Set Hub and Teak.	N 556,894.62 E 1,233,639.93
75	Set Hub and Teak.	N 556,063.72 E 1,233,919.28
76	Set 1/2" sq. x 30" I. Rod w/ 1-1/2" Alum. Cap Stamped "D.S.H.D. HORIZ CONTROL 76"	N 556,867.89 E 1,234,107.78
77	Set PK Nail.	N 556,862.59 E 1,235,801.68
78	Set PK Nail.	N 555,952.81 E 1,234,723.81
79	Fd. 2-1/2" I. Pipe NE corner of DLC 45.	N 554,988.73 E 1,234,817.32
80	Set PK Nail.	N 555,967.78 E 1,234,735.51
Secondary Traverse		
90	Fd. PK Nail.	N 559,553.73 E 1,235,636.92
91	Set Hub and Teak.	N 568,452.78 E 1,236,125.31
92	Fd. PK Nail and Shiner.	N 568,837.28 E 1,236,328.59
93	Set 3/8" x 30" I. Rod w/ 1-1/2" Alum. Cap Stamped "OSHD"	N 568,212.19 E 1,234,817.32
94	Set PK Nail and Shiner.	N 559,694.54 E 1,235,877.17
Secondary Traverse		
100	Set Hub and Teak.	N 556,694.54 E 1,234,994.47
101	Set PK Nail and Shiner.	N 557,183.51 E 1,235,114.82
Secondary Traverse		
104	Set PK Nail.	N 556,822.88 E 1,234,212.26
105	Set Hub and Teak.	N 556,745.42 E 1,234,434.35
Auxiliary Points		
500	Set PK Nail and Shiner.	N 561,167.88 E 1,236,553.81
501	Set PK Nail and Shiner.	N 568,871.59 E 1,235,332.44
502	Set Hub and Teak.	N 555,757.81 E 1,234,817.32
503	Set Rail Road Spike.	N 557,342.72 E 1,234,768.85
504	Set Hub and Teak.	N 556,818.57 E 1,235,288.41
505	Set PK Nail.	N 556,877.79 E 1,234,512.85
506	Set PK Nail.	N 557,614.88 E 1,234,735.35

FOUND MONUMENTS

PT#	DESCRIPTION	NORTHING EASTING
1	Fd. 3/4" I. Pipe (SHRW)	N 559,499.41 E 1,235,199.95
2	Fd. 1" I. Pipe (No Rec.)	N 559,149.75 E 1,235,688.55
3	Fd. 1/2" I. Rod (No Rec.)	N 558,667.54 E 1,235,628.69
4	Fd. 2" I. Pipe (M35-38)	N 558,668.48 E 1,235,515.31
5	Fd. 3/4" I. Rod (M57-43)	N 558,233.83 E 1,235,492.81
6	Fd. 3/8" I. Rod (M57-43)	N 558,173.21 E 1,235,462.88
11	Fd. 3/4" I. Rod w/ 2" Alum. Cap Stamped AA Surveying (M91-58)	N 557,312.64 E 1,235,885.72
12	Fd. 3/4" I. Rod (Fappindale Plat)	N 557,272.83 E 1,235,291.58
23	Fd. 3/4" I. Rod (M15-11)	N 556,458.21 E 1,234,919.53
25	Fd. 3/4" I. Rod (No Rec.)	N 556,352.62 E 1,234,886.32
1000	Fd. 3/4" I. Rod w/ 1 1/4" Plastic Cap Stamped Compass Co. (M112-8)	N 556,856.21 E 1,234,538.69
1001	Fd. 3/4" I. Rod (M37-71)	N 556,813.47 E 1,234,739.43
1002	Fd. 3/4" I. Rod w/ 1 1/2" Alum. Cap Stamped Shiner Engineering (RM2-81)	N 556,813.83 E 1,234,448.46
1003	Fd. 3/4" I. Rod (M37-71)	N 556,888.37 E 1,234,633.44
1004	Fd. 3/4" I. Rod w/ 1 1/4" Plastic Cap Stamped Compass Co. (M112-8)	N 556,724.85 E 1,234,888.46
1005	Fd. 3/4" I. Rod w/ 1 1/4" Plastic Cap Stamped Bentz Survey Inc. (M184-16)	N 556,358.22 E 1,234,885.36
1006	Fd. 3/4" I. Rod w/ 1 1/4" Plastic Cap Stamped Bentz Survey Inc. (M184-16)	N 556,433.11 E 1,234,911.85
1007	Fd. 1/2" I. Pipe (No Rec.)	N 556,522.18 E 1,234,559.54
1008	Fd. 3/4" I. Rod w/ 1 1/4" Plastic Cap Stamped Bentz Survey Inc. (M184-6)	N 556,522.49 E 1,234,539.95
1009	Fd. 3/4" I. Rod (No Rec.)	N 556,968.83 E 1,235,888.16
1010	Fd. 2" I. Pipe (M82-21)	N 556,968.86 E 1,235,888.64
1011	Fd. 3/4" I. Rod (No Rec.)	N 556,998.33 E 1,235,867.84
1012	Fd. 3/4" I. Rod (No Rec.)	N 557,744.74 E 1,235,211.77
1013	Fd. 3/4" I. Rod w/ 1 1/4" Plastic Cap Stamped AA Surveying (M99-57)	N 557,741.77 E 1,235,211.82
1014	Fd. 3/4" I. Rod w/ 1 1/4" Plastic Cap Stamped AA Surveying (M99-37)	N 557,844.57 E 1,235,191.18
1015	Fd. 3/4" I. Rod (M57-43)	N 557,824.67 E 1,235,185.88
1016	Fd. 3/4" I. Rod (No Rec.)	N 557,269.35 E 1,235,894.48
1017	Fd. 3/4" I. Rod (M189-63, M91-58, M57-43)	N 557,256.58 E 1,235,838.17
1018	Fd. 2 1/4" I. Pipe (M35-13)	N 557,125.86 E 1,235,828.58
1019	Fd. 3/4" I. Pipe (M35-13)	N 557,236.11 E 1,234,682.42
1020	Fd. 3/4" I. Pipe (No Rec.)	N 556,835.45 E 1,235,842.97
1021	Fd. 2-1/2" Brass Cap at NW corner DLC 43 set in concrete fence corner	N 555,888.47 E 1,234,988.49
2001	Fd. 3/4" I. Rod (2744+32 - 125' Rt.)	N 568,183.93 E 1,235,799.88
2002	Fd. 3/4" Bolt	N 568,144.68 E 1,235,491.34
2003	Fd. 3/4" Bolt	N 559,981.63 E 1,235,161.45
2004	Fd. 3/4" Bolt	N 559,917.58 E 1,235,884.78
2005	Fd. 1" I. Pipe	N 559,868.35 E 1,234,989.82



LEGEND

- △ Set traverse point as noted.
- Found monument as noted.
- Primary Traverse.
- - - Secondary Traverse.
- - - Existing Edge of Pavement.
- ==== Rail Road.

REGISTERED PROFESSIONAL LAND SURVEYOR
Roger E. Patitz
OREGON JULY 11, 1988 ROBERT L. PATITZ 908

OREGON DEPARTMENT OF TRANSPORTATION
3099 NE DIAMOND LAKE BLVD. ROSEBURG, OR 97479
**OAKLAND - SHADY HIGHWAY AT CARNES RD.
HORIZONTAL CONTROL MAP**
COUNTY: DOUGLAS HIGHWAY: OAKLAND - SHADY
COORDINATES: STATE PLANE LDP EA: C1101469
BEARINGS: STATE GRID, SOUTH ZONE KEY NO.: 01934
DESIGNER: M. WAGSTAFF PROJECT MANAGER: ROGER E. PATITZ, PLS
CADD FILE LOCATION: R3220\usr2\r3\projects\01934\01934hom.dgn
SCALE: ONE INCH EQUALS 200 FEET
AUGUST 1992