

SHEET INDEX:

- 1 SURVEY NARRATIVE, SHEET LAYOUT & CONTROL NARRATIVE, NETWORK DIAGRAM, SURVEY REFERENCES
- 2-5 SURVEY SHEETS

SE 1/4 SECTION 20, T. 28 S., R 6 W., WM
 SW 1/4 SECTION 21, T. 28 S., R 6 W., WM
 NW 1/4 SECTION 21, T. 28 S., R 6 W., WM
 NE 1/4 SECTION 21, T. 28 S., R 6 W., WM

FILED
 Date: 4-12-2021 By: [Signature]
 This survey consist of:
 Map: ST. HWY 42-017 A-E
 Narrative:
 Corner Rpt:
 DOUGLAS COUNTY SURVEYOR

CONTROL INFORMATION

SURVEY DATUM- PER OAR 734-005-015 OREGON COORDINATE REFERENCE SYSTEM (OCRS):
 COTTAGE GROVE - CANYONVILLE ZONE
 NAD83(2011) EPOCH 2010 (INTERNATIONAL FEET)

EQUIPMENT- THE FIELD WORK FOR THIS PROJECT WAS INITIATED IN JULY OF 2019 AND CARRIED ON INTERMITTENTLY THROUGH MAY OF 2020. 2 LEICA GS14 GNSS RECEIVERS, 2 LEICA CS20 DATA COLLECTORS, 1 LEICA CS15 DATA COLLECTOR AND 1 LEICA TS16 TOTAL STATION WERE UTILIZED TO PERFORM THE FIELD WORK.

CONTROL NARRATIVE AND BASIS OF BEARINGS

ALL BEARINGS FOR THIS SURVEY ARE BASED ON THE OREGON COORDINATE REFERENCE SYSTEM (OCRS), COTTAGE GROVE - CANYONVILLE ZONE, NAD 83(2011) EPOCH 2010.00. ALL COORDINATES ARE IN INTERNATIONAL FEET UNITS.

FOUND NETWORK POINTS AND FOUND MONUMENTATION SHOWN HEREON WERE MEASURED UTILIZING A MINIMUM OF 2 REDUNDANT 60 EPOCH GNSS OBSERVATIONS WHILE CONNECTED TO THE ORGN IN ACCORDANCE WITH ODOT'S SURVEY POLICY AND PROCEDURES MANUAL. IN THE EVENT THAT THE SKY WAS OBSTRUCTED AND A GNSS MEASUREMENT COULD NOT BE PERFORMED, ADDITIONAL CONTROL WAS SET UTILIZING THE ORGN. A TOTAL STATION WAS THEN UTILIZED TO TIE THE MONUMENT IN ACCORDANCE WITH ODOT'S POLICY AND PROCEDURE'S MANUAL.

CONTROL POINTS FOR THIS SURVEY WERE NOT SET ON AND DO NOT REPRESENT PROPERTY OR RIGHT OF WAY LINES AND ARE INTENDED FOR THE USE BY ODOT IN SUPPORT OF THIS AND FUTURE PROJECTS. IT IS NOT THE INTENT OF ODOT TO PERPETUATE THESE CONTROL POINTS AS MONUMENTS.

SURVEY NARRATIVE

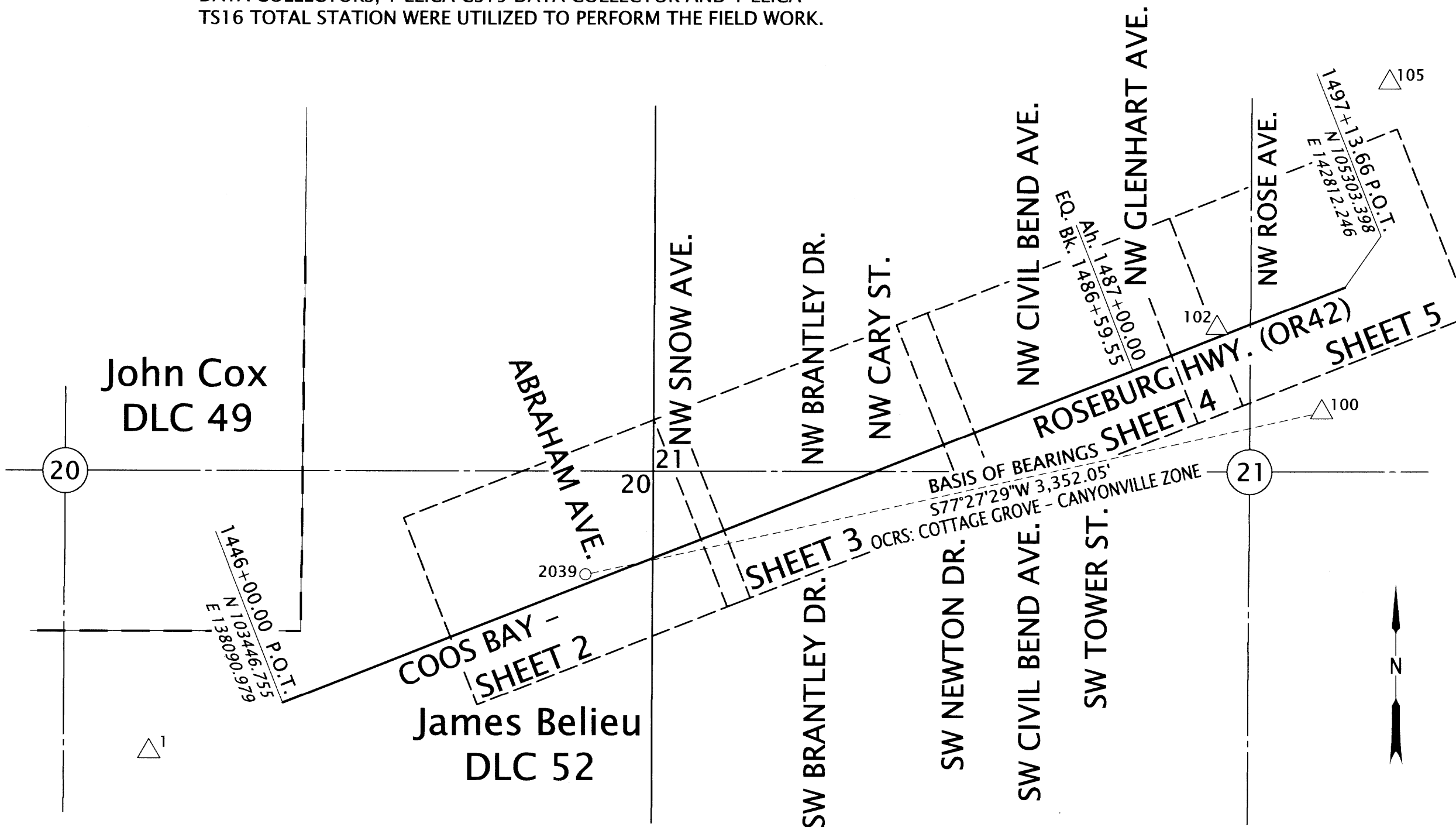
THIS SURVEY WAS MADE AS A RESULT OF THE OREGON DEPARTMENT OF TRANSPORTATION'S OR 42/US101/OR42S CURB RAMP PROJECT. THE PURPOSE OF THIS SURVEY IS TO RECORD THE POSITIONS OF MONUMENTS OF RECORD, RESOLVE THE EXISTING RIGHT OF WAY (R/W) CENTERLINES, AND DEFINE THE EXISTING RIGHT OF WAY LINES AS DIRECTED IN OREGON REVISED STATUTE (ORS)209.155

THE SCOPE OF THIS PROJECT IS FOR PROPOSED ADA UPGRADES IN WINSTON, OR FROM THE INTERSECTION OF ABRAHAM AVE TO THE INTERSECTION OF DILLARD HWY. ORIGINALLY ODOT HAD IMPROVEMENT PROJECTS IN THIS SAME AREA. SURVEYS AND ACQUISITIONS TOOK PLACE AS EVIDENCED BY ODOT MAP NOS. 9B-7-5, 9B-30-17 AND 10B-19-34 AS WELL AS THE CORRESPONDING CONTROL, RECOVERY AND RETRACEMENT SURVEYS AND MONUMENTATION SURVEYS SURVEY FILED AS ST. HWY. 42-007, ST. HWY. 42-009 AND ST. HWY. 42-012 IN THE OFFICE OF THE DOUGLAS COUNTY SURVEYOR.

PER SAID SURVEYS EXISTING GPS AND NETWORK POINT NUMBERS 1, 100, 102 AND 105 AS WELL AS FOUND MONUMENT NUMBERS 1040 AND 2039 WERE TIED WITH 2 INDEPENDENT 60 SECOND ORGN OBSERVATIONS SEPARATED BY AT LEAST 30 MINUTES. THIS ESTABLISHED A MECHANISM TO MOVE THE OLD SURVEY DATA OVER ONTO THE CURRENT OCRS COORDINATES VALUES. THE NEW TIES FIT THE RELATIVE RECORDS VALUES OF THE CONTROL AND MONUMENTS VERY WELL. UTILIZING SAID NEW TIES THE LINE WORK WAS MOVED TO THE NEW COORDINATE SYSTEM AND CHECKED FOR COMPLETENESS AND UPDATED TO CURRENT MAPPING STANDARDS. SURVEYS ST. HWY. 42-007 AND ST. HWY. 42-009 UTILIZED COMMON CONTROL NETWORK POINTS SO THE RELATIONSHIP OF THE SURVEYS COULD BE ESTABLISHED. THE SURVEYS FIT TOGETHER VERY WELL AND THE CENTERLINE PER ST. HWY. 42-009 WERE EXTENDED TO THE INTERSECTION WITH DILLARD HWY, AND THE LINE WORK PER SAID SURVEYS WAS COMBINED. ALL FOUND OR SET MONUMENTS PER SAID SURVEYS NOW HAVE NEW COORDINATE VALUES AND IF DISTURBED CAN BE RESET IN THEIR ORIGINAL LOCATION BASED ON THIS SURVEY. ALL MONUMENTS TIED FIT WELL WITH THE RECORD LOCATIONS AND WERE USED TO VERIFY THE RESOLUTION OF THE HIGHWAY CENTERLINE. POINT NUMBERS 1040 AND 2039 SPECIFICALLY WERE HELD TO CONTROL THE TANGENT AND STATIONING AT POINT NUMBER 2039 WAS HELD AT 1460+63.00, 40.00' LEFT OF CENTERLINE PER SAID SURVEY NUMBER ST. HWY. 42-012.

RESEARCH WAS PERFORMED AROUND THE INTERSECTIONS WHERE THE ADA WORK WILL OCCUR TO ENSURE THAT THERE HAVE BEEN NO CHANGES OR UPDATES TO THE CENTERLINE OR RIGHT-OF-WAY LINES SINCE THE TIME OF SAID SURVEYS. A SEARCH WAS ALSO MADE FOR ANY RECORD MONUMENTATION THAT HAS BEEN SET IN THE AREA SINCE THE TIME OF SAID SURVEY. ANY POINTS AT RISK OF DISTURBANCE BY CONSTRUCTION ACTIVITIES WAS TIED TO THE CURRENT COORDINATE SYSTEM FOR FUTURE REPLACEMENT IF NEEDED.

ADDITIONALLY THE MONUMENTS SET PER SAID SURVEY NUMBER ST. HWY. 42-012 THAT WERE NOT REVISTED DURING THIS SURVEY ARE SHOWN FOR PURPOSES OF UPDATING THE COORDINATE VALUES TO THE CURRENT OCRS VALUES. THESE POINTS WERE NOT DEEMED TO BE AT RISK OF DISTURBANCE DURING CONSTRUCTION, POST CONSTRUCTION OF THE PROJECT, THESE MONUMENTS WILL BE CHECKED AND RESET AS NEEDED.



LEGEND

△	FOUND NETWORK POINT
○	FOUND MONUMENT

BASIS OF BEARING, CONTROL NETWORK & SHEET LAYOUT SCHEMATIC
 NOT TO SCALE

CONTROL POINT COORDINATE TABLE

ALUM=ALUMINUM FD=FOUND

PT. NO.	OCRS NORTHING	OCRS EASTING	DATE	DESCRIPTION
1	103228.22	137494.86	12/11/2019	FD 5/8" IRON ROD W/ 1-1/2" ALUM CAP "ODOT CONTROL 1", FLUSH
100	104747.30	142709.91	12/11/2019	FD 1" BRASS PLUG "ODOT CONTROL 100", FLUSH
102	105121.58	142244.51	12/11/2019	FD 1" BRASS PLUG "ODOT CONTROL 102", FLUSH
105	106217.56	143011.84	12/11/2019	FD 1" BRASS PLUG "ODOT CONTROL 105", FLUSH
2039	104019.39	139437.85	12/11/2019	FD 5/8" IRON ROD W/ 1-1/2" ALUM CAP "ODOT RIGHT-OF-WAY", DN 0.1'

REGISTERED PROFESSIONAL LAND SURVEYOR
 [Signature]
 4/12/2021

OREGON JULY 12, 2005
 LOGAN THOMAS MILES
 65452

EXPIRES: 12/31/2022

OREGON DEPARTMENT OF TRANSPORTATION

HORIZONTAL CONTROL, MONUMENT RECOVERY AND RETRACEMENT SURVEY
 OR42/US101/OR42S: CURB RAMPS (WINSTON)
 DOUGLAS COUNTY



ODOT REGION 3 TECH CENTER
 3500 NW STEWART PARKWAY
 ROSEBURG, OR 97470 KEY NO. 22143

APRIL 1, 2021
 NO SCALE
 SHEET 1 OF 5