

POINT LEGEND

- ☆ FOUND GPS STATION
- ▲ SET NETWORK POINT
- △ FOUND MONUMENT USED AS NETWORK POINT
- FOUND MONUMENT

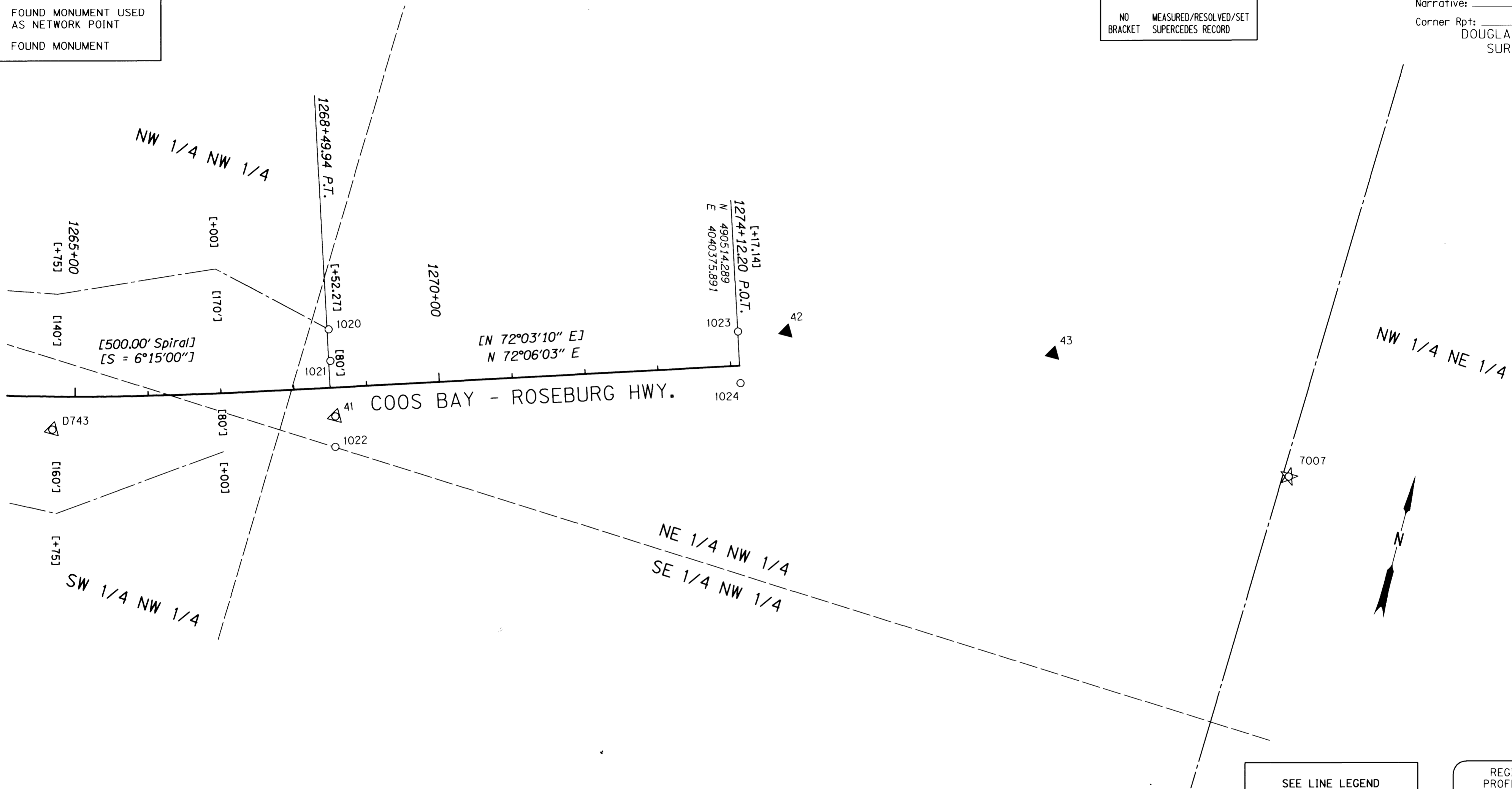
SEC. 17, T. 30 S., R. 9 W., W.M.

RECORD DATA

- () ODOT DRG. 88-27-4
- (()) ODOT DRG. 88-27-6
- [] ODOT DRG. 98-13-5
- NO MEASURED/RESOLVED/SET
BRACKET SUPERCEDES RECORD

FILED

Date: 2-23-2017 By: JC
 This survey consist of:
 Map: St HWY 42-016 A-K
 Narrative: _____
 Corner Rpt: _____
 DOUGLAS COUNTY SURVEYOR



CONTROL MONUMENTS

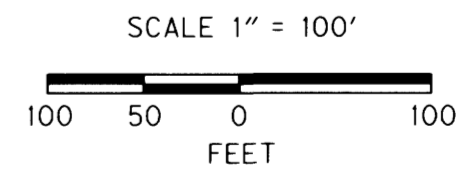
UNK = UNKNOWN

| PT. NO. | LDP NORTHING | LDP EASTING | ELEV. | STATION | OFFSET (- IS LT.) | DATE | DESCRIPTION | REFERENCE |
|---------|--------------|-------------|-------|------------|-------------------|-----------|---|-----------|
| 41 | 490305.399 | 4039857.670 | | 1268+54.87 | 39.51 | 4/27/2010 | FD. 1 1/2" ALUM. CAP STAMPED "ODOT HORIZ. CONTROL 41" FLUSH W/ SURFACE GOOD COND. CARSONITE WITNESS POST NEARBY | UNK |
| 42 | 490576.035 | 4040425.756 | | | | 4/28/2010 | SET 5/8" X 30" L REBAR W/ 1 1/2" BRASS CAP STAMPED "ODOT CONTROL 42" | |
| 43 | 490640.090 | 4040787.113 | | | | 4/27/2010 | SET 5/8" X 30" L REBAR W/ 1 1/2" BRASS CAP STAMPED "ODOT CONTROL 43" | |
| 7007 | 490580.102 | 4041142.646 | | | | 4/27/2010 | FD. PK NAIL IN A.C. SHOULDER | T-166 A-C |

SEE LINE LEGEND ON SHEET 2

REGISTERED PROFESSIONAL LAND SURVEYOR

Marshall R. Wagstaff



OREGON
 JANUARY 9, 2001
 MARSHALL R. WAGSTAFF
 49476LS
 RENEWS: JUNE 30, 2018

RECOVERED MONUMENTS

| PT. NO. | LDP NORTHING | LDP EASTING | ELEV. | STATION | OFFSET (- IS LT.) | DATE | DESCRIPTION | REFERENCE |
|---------|--------------|-------------|-------|------------|-------------------|-----------|--|-------------|
| 1020 | 490418.141 | 4039818.453 | | 1268+52.20 | -79.83 | 4/27/2010 | FD. 5/8" REBAR WITH 1 1/2" ALUM. CAP STAMPED "OREG. STATE HWY DN." 0.2 FT. ABOVE SURFACE GOOD COND. METAL POST NEARBY MARKED "S H R W" | DRG 98-13-5 |
| 1021 | 490376.978 | 4039831.821 | | 1268+52.27 | -36.55 | 4/27/2010 | FD. 5/8" REBAR WITH 1 1/2" ALUM. CAP STAMPED "OREG. STATE HWY DN." 0.4 FT. ABOVE SURFACE GOOD COND. METAL POST NEARBY MARKED "S H R P" | DRG 98-13-5 |
| 1022 | 490265.063 | 4039868.398 | | 1268+52.68 | 81.19 | 4/27/2010 | FD. 5/8" REBAR WITH 1 1/2" ALUM. CAP STAMPED "OREG. STATE HWY DN." 0.3 FT. BELOW SURFACE GOOD COND. METAL POST NEARBY MARKED "S H R W" | DRG 98-13-5 |
| 1023 | 490558.916 | 4040361.736 | | 1274+12.45 | 46.82 | 4/27/2010 | FD. 5/8" REBAR WITH 1 1/2" ALUM. CAP STAMPED "OREG. STATE HWY DN." 0.3 FT. ABOVE SURFACE GOOD COND. METAL POST NEARBY MARKED "S H R P" | DRG 98-13-5 |
| 1024 | 490491.504 | 4040383.250 | | 1274+12.20 | 23.94 | 4/27/2010 | FD. 5/8" REBAR WITH 1 1/2" ALUM. CAP STAMPED "OREG. STATE HWY DN." 0.3 FT. BELOW SURFACE GOOD COND. METAL POST NEARBY MARKED "S H R P" | DRG 98-13-5 |

SI FEET OREGON DEPARTMENT OF TRANSPORTATION
 HORIZONTAL CONTROL, RECOVERY, RETRACEMENT & RIGHT OF WAY BOUNDARY MONUMENTATION MAP OR 42: COUNTY LINE CURVES PHASE 1
 COOS BAY - ROSEBURG HWY. NO. 35, MP. 43.20 - 46.41
 COOS & DOUGLAS COUNTY

FOR ODOT REGION 3
 3500 NW. STEWART PKWY.
 ROSEBURG, OR. 97470

FEBRUARY 22, 2017
 SCALE: 1" = 100'
 SHEET 11 OF 11