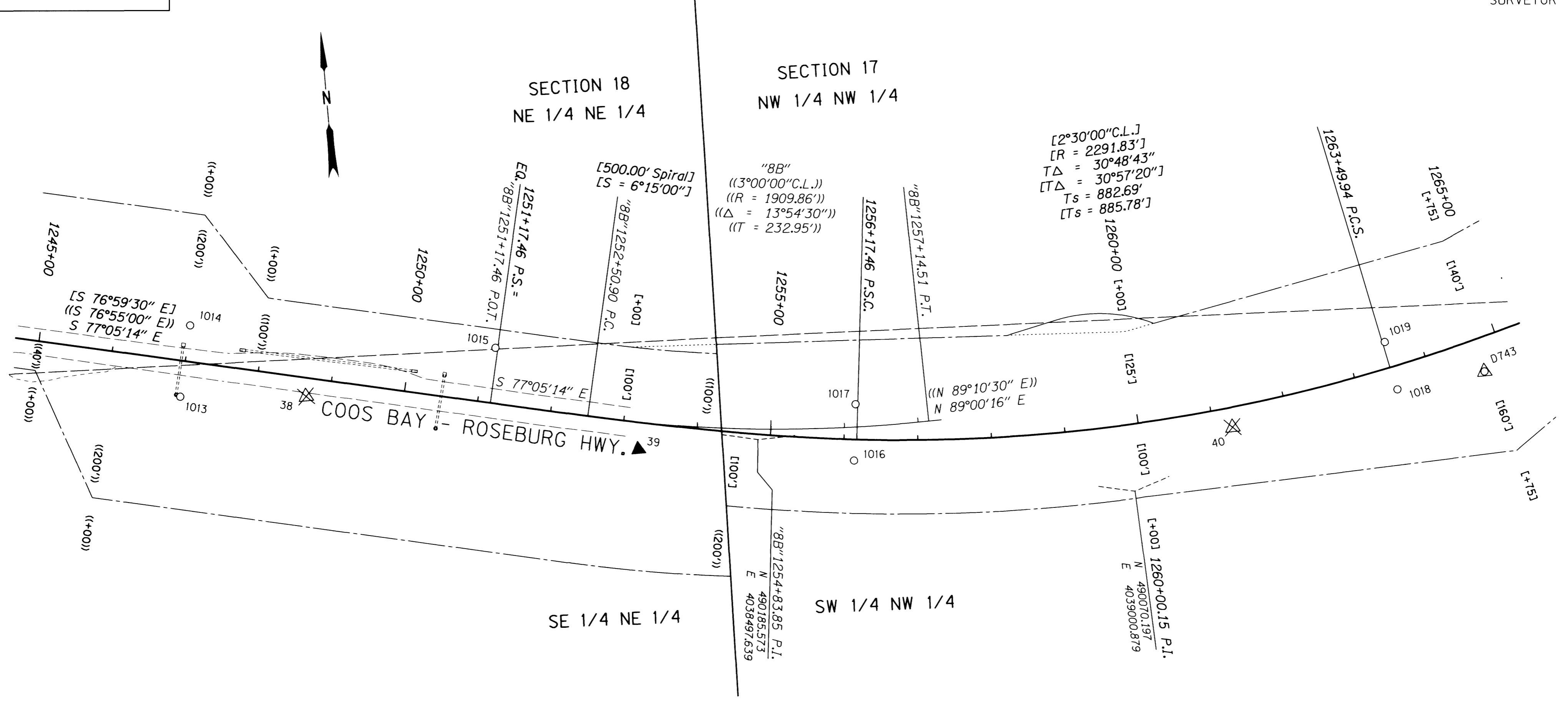


SEC. 17 & 18, T. 30 S., R. 9 W., W.M.

RECORD DATA	
()	ODOT DRG. 88-27-4
(())	ODOT DRG. 88-27-6
[]	ODOT DRG. 98-13-5
NO BRACKET	MEASURED/RESOLVED/SET SUPERCEDES RECORD

FILED
 Date: **2-23-2017** By: **JC**
 This survey consist of:
 Map: **ST HWY 42-0164-K**
 Narrative:
 Corner Rpt: **DOUGLAS COUNTY SURVEYOR**

POINT LEGEND	
▲	SET NETWORK POINT
△	FOUND MONUMENT USED AS NETWORK POINT
○	FOUND MONUMENT
⊗	DESTROYED NETWORK POINT



CONTROL MONUMENTS

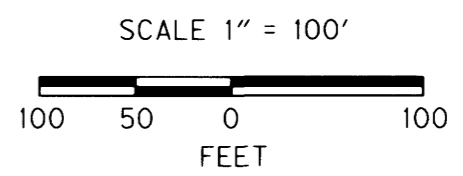
PT. NO.	LDP NORTHING	LDP EASTING	ELEV.	STATION	OFFSET (- IS LT.)	DATE	DESCRIPTION	REFERENCE
38	490298.638	4037892.442	546.04	1248+68.89	25.04	4/27/2010	DESTROYED 5/8" X 30" I. REBAR W/ 1 1/2" BRASS CAP STAMPED "ODOT CONTROL 38"	
39	490186.988	4038334.774	548.94	1253+24.12	36.31	4/27/2010	SET 5/8" X 30" I. REBAR W/ 1 1/2" BRASS CAP STAMPED "ODOT CONTROL 39"	
40	490143.973	4039140.485	559.14	1261+24.83	26.89	4/27/2010	DESTROYED 1 1/2" ALUM. CAP STAMPED "ODOT HORIZ. CONTROL 40" CARSONITE WITNESS POST NEARBY	UNK
D743	490188.289	4039487.499	565.89	1264+89.33	45.29	4/27/2010	FD. 1/2" STAINLESS STEEL ROD HAD THROUGH 5" DIA. LOGO CAP STAMPED "VERTICAL CONTROL MARK D743" IN 12" SQUARE CONC. PEDESTAL	NGS 1987

UNK = UNKNOWN

SEE LINE LEGEND ON SHEET 2

REGISTERED PROFESSIONAL LAND SURVEYOR

Marshall R. Wagstaff



OREGON
 JANUARY 9, 2001
 MARSHALL R. WAGSTAFF
 49476LS

RENEWS: JUNE 30, 2018

RECOVERED MONUMENTS

PT. NO.	LDP NORTHING	LDP EASTING	ELEV.	STATION	OFFSET (- IS LT.)	DATE	DESCRIPTION	REFERENCE
1013	490313.514	4037722.618		1246+99.84	48.49	4/28/2010	FD. 1 1/2" ALUM. CAP UNREADABLE 0.1 FT. ABOVE SURFACE GOOD COND. METAL POST NEARBY MARKED "S H R P"	DRG 98-13-5
1014	490408.299	4037744.682		1247+00.16	-48.83	4/28/2010	FD. 5/8" REBAR WITH 1 1/2" ALUM. CAP STAMPED "OREG. STATE HWY DIV." 0.2 FT. ABOVE SURFACE GOOD COND. METAL POST NEARBY MARKED "S H R P"	DRG 98-13-5
1015	490340.856	4038153.943		1251+14.15	-74.55	4/27/2010	FD. 5/8" REBAR WITH 1 1/2" ALUM. CAP STAMPED "OREG. STATE HWY DIV." 0.1 FT. ABOVE SURFACE GOOD COND. METAL POST NEARBY MARKED "S H R P"	DRG 98-13-5
1016	490145.466	4038624.785		1256+14.24	28.66	4/27/2010	FD. 5/8" REBAR WITH 1 1/2" ALUM. CAP STAMPED "OREG. STATE HWY DIV." 0.25 FT. ABOVE SURFACE FAIR COND. ROD LEANS SLIGHTLY TO THE EAST METAL POST NEARBY MARKED "S H R P"	DRG 98-13-5
1017	490221.217	4038633.771		1256+14.27	-47.62	4/27/2010	FD. 5/8" REBAR WITH 1 1/2" ALUM. CAP STAMPED "OREG. STATE HWY DIV." 0.2 FT. ABOVE SURFACE POOR COND. ROD AND CAP LEANS SE	DRG 98-13-5
1018	490175.045	4039367.656		1263+51.29	31.15	4/27/2010	FD. 5/8" REBAR WITH 1 1/2" ALUM. CAP STAMPED "OREG. STATE HWY DIV." FLUSH FAIR COND.	DRG 98-13-5
1019	490240.141	4039356.270		1263+53.35	-34.90	4/27/2010	FD. 5/8" REBAR WITH 1 1/2" ALUM. CAP STAMPED "OREG. STATE HWY DIV." 0.2 FT. ABOVE SURFACE GOOD COND. METAL POST NEARBY MARKED "S H R P"	DRG 98-13-5

OREGON DEPARTMENT OF TRANSPORTATION
 HORIZONTAL CONTROL, RECOVERY, RETRACEMENT & RIGHT OF WAY BOUNDARY MONUMENTATION MAP
 OR 42: COUNTY LINE CURVES PHASE 1
 COOS BAY - ROSEBURG HWY. NO. 35, MP. 43.20 - 46.41
 COOS & DOUGLAS COUNTY

FOR ODOT REGION 3
 3500 NW. STEWART PKWY.
 ROSEBURG, OR. 97470

FEBRUARY 22, 2017
 SCALE: 1" = 100'
 SHEET 10 OF 11