

SEC. 13 & 14, T. 30 S., R. 10 W., W.M.

RECORD DATA

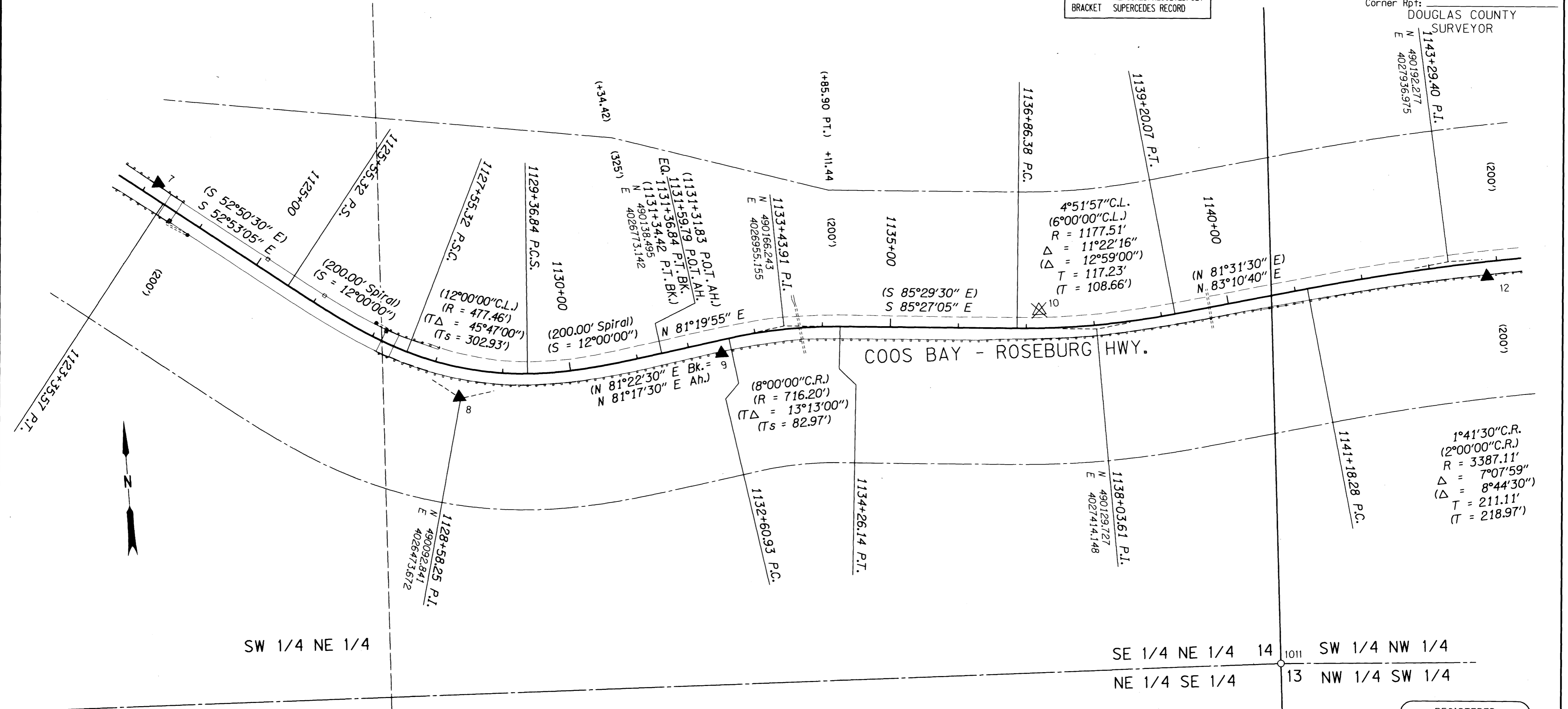
() ODOT DRG. 88-27-4
 (() ODOT DRG. 88-27-6
 [] ODOT DRG. 98-13-5
 NO MEASURED/RESOLVED/SET
 BRACKET SUPERCEDES RECORD

FILED

Date: **2-23-2017** By: **JC**
 This survey consist of:
 Map: **ST HWY 42-016 A-K**
 Narrative:
 Corner Rpt: **DOUGLAS COUNTY SURVEYOR**

POINT LEGEND

▲	SET NETWORK POINT
⊗	DESTROYED NETWORK POINT
○	FOUND MONUMENT

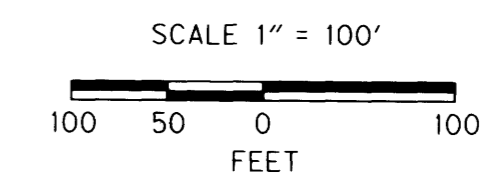


REGISTERED PROFESSIONAL LAND SURVEYOR

Marshall R. Wagstaff

OREGON
 JANUARY 9, 2001
 MARSHALL R. WAGSTAFF
 49476LS

RENEWS: JUNE 30, 2018



SEE LINE LEGEND ON SHEET 2

CONTROL MONUMENTS

PT. NO.	LDP NORTHING	LDP EASTING	ELEV.	STATION	OFFSET (- IS LT.)	DATE	DESCRIPTION	REFERENCE
7	490438.941	4028051.958	450.87	1123+13.14	-21.52	4/19/2010	SET 5/8" X 30" L REBAR W/ 1 1/2" BRASS CAP STAMPED "ODOT CONTROL 7"	
8	490094.583	4026471.657	449.85	1128+43.90	43.41	4/19/2010	FD. DATE NAIL SET IN A.C. 0.4 FT. BELOW SURFACE GOOD COND.	DRG 88-27-4
9	490132.437	4028861.196	441.22	1132+45.93	19.26	4/19/2010	SET 5/8" X 30" L REBAR W/ 1 1/2" BRASS CAP STAMPED "ODOT CONTROL 9"	
10	490162.956	4027331.521	430.14	1137+19.35	-26.12	4/19/2010	DESTROYED 1" BRASS PLUG IN ROCK STAMPED "ODOT CONTROL 10"	
12	490166.958	4027982.594	431.51	1143+83.56	21.43	4/19/2010	SET 5/8" X 30" L REBAR W/ 1 1/2" BRASS CAP STAMPED "ODOT CONTROL 12"	

RECOVERED MONUMENTS

PT. NO.	LDP NORTHING	LDP EASTING	ELEV.	STATION	OFFSET (- IS LT.)	DATE	DESCRIPTION	REFERENCE
1011	488620.931	4027850.325				4/22/2010	FD. 2.5/8" BRASS DISK SET ON 1" O.D. GALV. PIPE STAMPED "C.P. 1/4 14/13 T30 R10 1978" 0.3 FT. ABOVE SURFACE GOOD COND.	G581080

SI FEET OREGON DEPARTMENT OF TRANSPORTATION
 HORIZONTAL CONTROL, RECOVERY, RETRACEMENT
 & RIGHT OF WAY BOUNDARY MONUMENTATION MAP
 OR 42: COUNTY LINE CURVES PHASE 1
 COOS BAY - ROSEBURG HWY. NO. 35, MP. 43.20 - 46.41
 COOS & DOUGLAS COUNTY

FOR ODOT REGION 3
 3500 NW. STEWART PKWY.
 ROSEBURG, OR. 97470

FEBRUARY 22, 2017
 SCALE: 1" = 100'
 SHEET 4 OF 11

Coos County

ST. HWY 42 - 016D