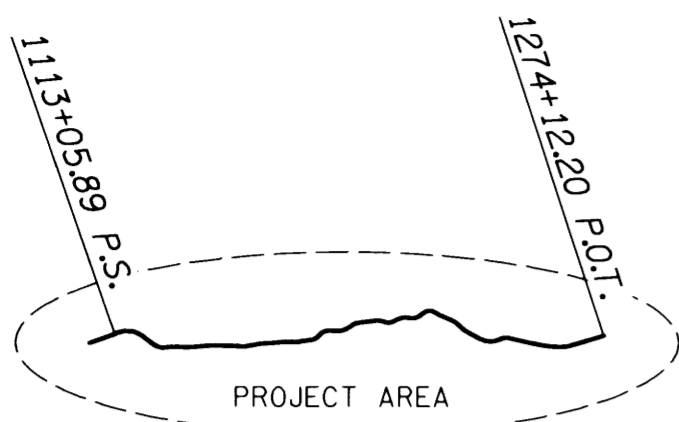


★ REMOTE

VICINITY MAP
NOT TO SCALE

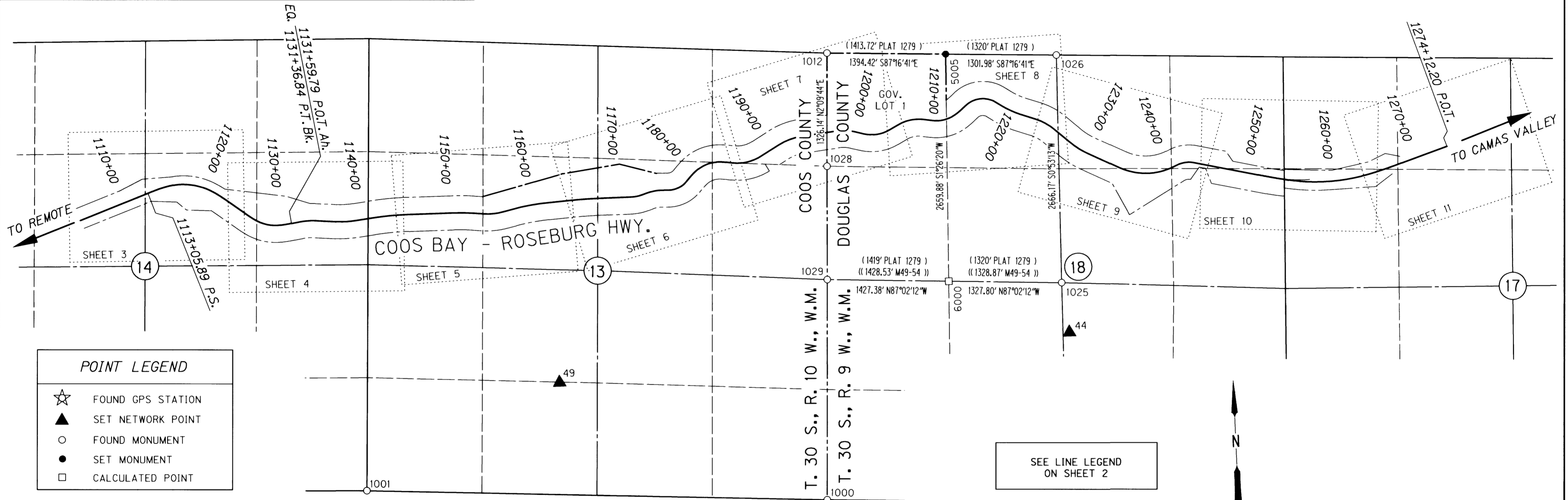


MARK ★

SEC. 13 & 14, T. 30 S., R. 10 W., W.M.
SEC. 17 & 18, T. 30 S., R. 9 W., W.M.

FILED

Date: **2-23-2017** By: *J*
This survey consist of:
Map: **ST Hwy 42-016 A-K**
Narrative:
Corner Rpt: **DOUGLAS COUNTY SURVEYOR**



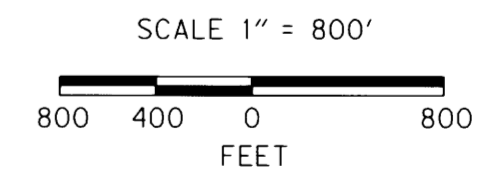
POINT LEGEND

- ★ FOUND GPS STATION
- ▲ SET NETWORK POINT
- FOUND MONUMENT
- SET MONUMENT
- CALCULATED POINT

SEE LINE LEGEND
ON SHEET 2



BASIS OF BEARING AND
CONTROL SCHEMATIC



REGISTERED
PROFESSIONAL
LAND SURVEYOR

Marshall R. Wagstaff

OREGON
JANUARY 9, 2001
MARSHALL R. WAGSTAFF
49476LS

RENEWS: JUNE 30, 2018

CONTROL MONUMENTS (NOT SHOWN ON INDIVIDUAL SHEETS)

PT. NO.	LDP NORTHING	LDP EASTING	ELEV.	STATION	OFFSET (- IS LT.)	DATE	DESCRIPTION	REFERENCE
44	488510.400	4035856.585				4/26/2010	SET 5/8" X 30" L REBAR W/ 1 1/2" BRASS CAP STAMPED "ODOT CONTROL 44"	
49	488153.369	4029845.526				4/20/2010	SET 5/8" X 30" L REBAR W/ 1 1/2" BRASS CAP STAMPED "ODOT CONTROL 49"	
E743			444.62				FD. 3 3/4" BRASS DISK VERTICAL IN ROCK FACE STAMPED "FOR INFORMATION OR TO REPORT DAMAGE WRITE WASHINGTON D.C. NATIONAL GEODETIC SURVEY VERTICAL CONTROL MARK THE DIRECTOR E743 1987" GOOD CONDITION (NOT SHOWN)	NGS 1987
MARK	492973.828	4051573.724				4/13/2010	FD. 3" BRASS DISK IN 12" X 12" CONC. PEDESTAL STAMPED "OREGON GEODETIC CONTROL PT. MARK 2006" GOOD COND.	T-166 A-C
REMOTE	506516.251	4015023.865				4/13/2010	FD. 3" BRASS DISK IN 12" X 12" CONC. PEDESTAL STAMPED "OREGON GEODETIC CONTROL PT. REMOTE 2006" FLUSH GOOD COND.	T-166 A-C

CALCULATED, RECOVERED & SET RIGHT OF WAY MONUMENTS (NOT SHOWN ON INDIVIDUAL SHEETS EXCEPT POINTS USED IN LOT LINE CALCULATION)

PT. NO.	LDP NORTHING	LDP EASTING	ELEV.	STATION	OFFSET (- IS LT.)	DATE	DESCRIPTION	REFERENCE
1000	486660.452	4032936.656				4/19/10	FD. 2 1/2" BRASS DISK SET ON 1 1/2" GALV. PIPE STAMPED "COUNY SURVEYOR FT.S OFFICE 1965 R10W S13 S24 T30S R9W S18 S19" 0.1 FT. ABOVE SURFACE GOOD COND.	CS FILE 53/53
1001	486973.082	4027535.375				4/14/10	FD. 2 1/2" BRASS DISK ON 1" GALV. PIPE O.D. STAMPED "G.P. SEC. COR. 14 13 23 24 T30 R10 1973" MOUMENT IS BENT TO THE NE SPUN	G59/089
1012	491890.15	4033136.036				4/22/10	FD. 3 1/4" ALUM. DISK IN SANDSTONE BANK STAMPED "U S DEPARTMENT OF INTERIOR BUR. OF LAND MANAGEMENT T30S R10W R9W S12 S13 S7 S18 2007"	BLM PLAT
1025	489096.243	4035788.118				4/28/10	FD. 2 1/2" BRASS DISK ON A 1 1/4" O. D. GALV. PIPE STAMPED "T30S R9W W.M. 1974 S18 1/4 SC" 1.0 FT. ABOVE SURFACE GOOD COND.	M49-54
1026	491762.095	4035829.393				4/28/10	FD. 2 1/2" BRASS DISK ON A 1 1/4" O. D. GALV. PIPE STAMPED "T30S R9W W.M. 1/4 S 7 S18 1973" 0.2 FT. ABOVE SURFACE GOOD COND.	M49-54
1028	490564.955	4033086.000				1/17/17	FD. 3" BRASS DISK ON A 2 1/4" O. D. GALV. PIPE STAMPED "U.S. DEPT. OF THE INTERIOR BUR. OF LAND MANAGEMENT CADASTRAL SURVEY UNLAWFUL TO DESTURB N 1/16 S13 S18 1985"	BLM PLAT
1029	489238.682	4033036.623				2/2/17	FD. 2 1/2" BRASS DISK ON A 1 1/4" O. D. GALV. PIPE STAMPED "COUNTY SURVEYORS OFFICE T30S 1/4 R10W S13 R9W S18 1965" 0.8 FT. ABOVE SURFACE GOOD COND. ORIGINAL STONE ALONG SIDE	CS FILE 53/53
5005	491823.927	4034528.882		1214+86.62	-631.17		SET 5/8" X 30" L REBAR W/ 2" ALUMINUM CAP STAMPED "ODOT RIGHT OF WAY 5005" AT W 1/16 T30S R9W S7 S18 WITH WHITE CARSONITE WITNESS POST NEARBY	DRG 11B-6-22
6000	489164.888	4034462.094					CALCULATED CENTER WEST 1/16 OF SECTION 18, T30S, R9W, W.M. (FOUND CORNER NOT TIED, BADLY DISTURBED, LEANING, MOSTLY PULLED FROM GROUND, POSSIBLY NOT IN SET LOCATION)	

OREGON DEPARTMENT OF TRANSPORTATION
HORIZONTAL CONTROL, RECOVERY, RETRACEMENT
& RIGHT OF WAY BOUNDARY MONUMENTATION MAP
OR 42: COUNTY LINE CURVES PHASE 1
COOS BAY - ROSEBURG HWY. NO. 35, MP. 43.20 - 46.41
COOS & DOUGLAS COUNTY

FOR ODOT REGION 3
3500 NW. STEWART PKWY.
ROSEBURG, OR. 97470

FEBRUARY 22, 2017
SHEET 1 OF 11