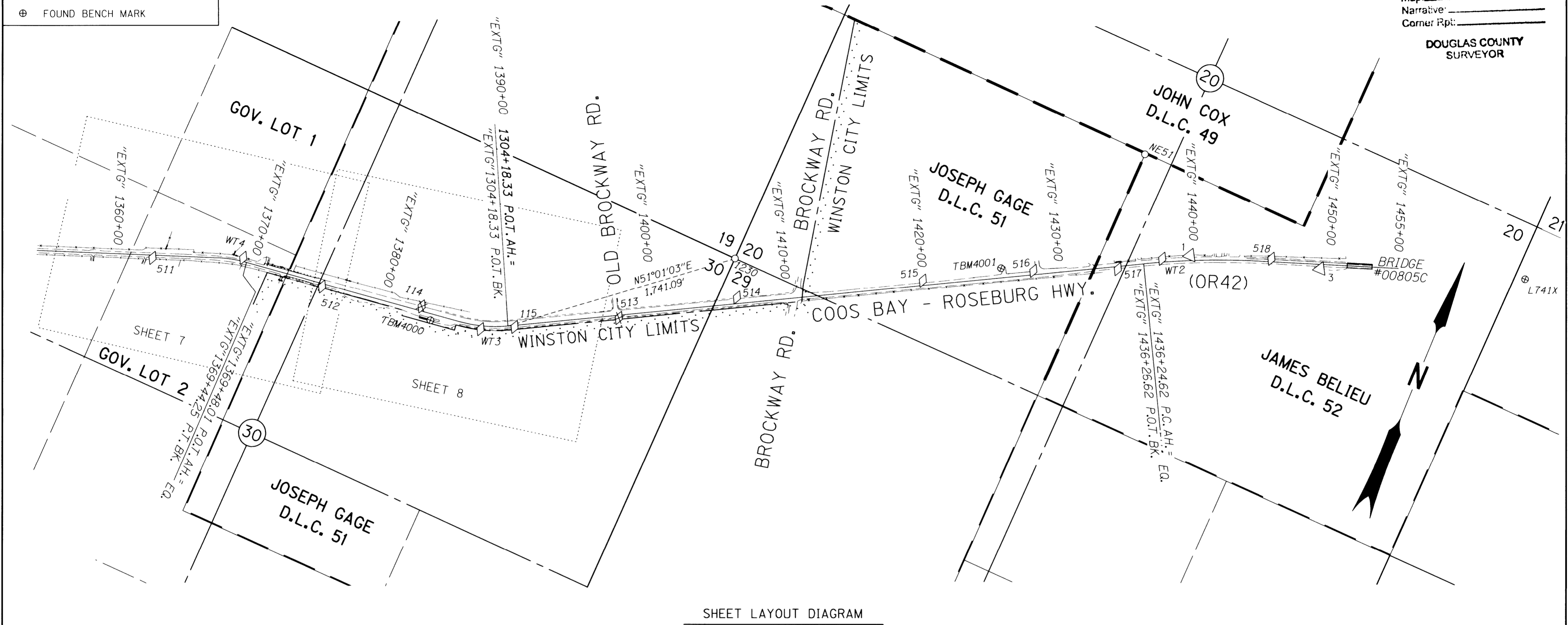


POINT LEGEND	
△	FOUND NETWORK POINT
◇	FOUND STRATEGIC POINT
⊗	DESTROYED STRATEGIC POINT
⊕	FOUND BENCH MARK

SEC. 20, 29, & 30 T28S, R6W, W.M.

FILED
 Date: 3-23-2012 By: JC
 This survey consists of:
 Map: ST HWY 042-015 A-H
 Narrative: _____
 Corner Rpt: _____

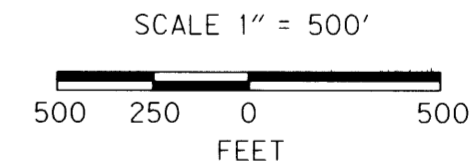
DOUGLAS COUNTY SURVEYOR



CONTROL & RECOVERED MONUMENTS TABLE (FROM ST. HWY. 42-014, AUGUST 2009)

NGS = NATIONAL GEODETIC SURVEY DCSO = DOUGLAS COUNTY SURVEYORS OFFICE CONST. = CONSTRUCTION

PT. NO.	LDP NORTHING	LDP EASTING	ELEV.	STATION	OFFSET (- IS LT.)	DATE	DESCRIPTION	REFERENCE
1	542163.527	4138948.183	532.25	"EXTG" 1439+67.92	-37.53	5/2/11	FD. 1 1/2" BRASS CAP STAMPED "ODOT CONTROL 1", FLUSH W/ SURFACE, STABILIZED IN CONCRETE - GOOD CONDITION	ST.HWY.42-009
3	542439.208	4138969.965	517.94	"EXTG" 1449+26.18	33.43	5/2/11	FD. 1 1/2" BRASS CAP STAMPED "ODOT CONTROL 3", FLUSH W/ SURFACE, STABILIZED IN CONCRETE - GOOD CONDITION	ST.HWY.42-009
114	539661.295	4133872.587	560.98	"EXTG" 1382+75.56	-33.46	5/2/11	DESTROYED 1 1/2" ALUM. CAP STAMPED "ODOT HORIZ CONTROL 114"	ST.HWY.42-001
115	539782.615	4134560.958	552.97	"EXTG" 1389+80.47	11.71	5/2/11	FD. RAILROAD SPIKE IN PAVEMENT, FLUSH W/ SURFACE, GOOD CONDITION	ST.HWY.42-001
512	539516.204	4133140.359	569.19	"EXTG" 1375+31.15	21.82	5/2/11	FD. 5/8" IRON REBAR W/ 1 1/2" BRASS CAP STAMPED "ODOT CONTROL 512", 0.30 FT. BELOW SURFACE, GOOD CONDITION	ST.HWY.42-014
513	540135.760	4135242.419	544.91	"EXTG" 1397+47.95	20.39	5/2/11	DESTROYED 5/8" IRON REBAR W/ 1 1/2" BRASS CAP STAMPED "ODOT CONTROL 513"	ST.HWY.42-014
514	540607.196	4135987.659	532.67	"EXTG" 1406+27.34	-45.35	5/2/11	FD. 5/8" IRON REBAR W/ 1 1/2" BRASS CAP STAMPED "ODOT CONTROL 514", 0.10 FT. BELOW SURFACE, GOOD CONDITION	ST.HWY.42-014
515	541243.523	4137204.093	537.03	"EXTG" 1420+00.11	-35.11	5/2/11	FD. 5/8" IRON REBAR W/ 1 1/2" BRASS CAP STAMPED "ODOT CONTROL 515", 0.10 FT. BELOW SURFACE, GOOD CONDITION	ST.HWY.42-014
516	541620.457	4137926.455	541.78	"EXTG" 1428+14.88	-28.20	5/2/11	FD. 5/8" IRON REBAR W/ 1 1/2" BRASS CAP STAMPED "ODOT CONTROL 516", FLUSH W/ SURFACE, GOOD CONDITION	ST.HWY.42-014
517	541869.067	4138495.420	534.12	"EXTG" 1434+33.92	19.86	5/2/11	FD. 5/8" IRON REBAR W/ 1 1/2" BRASS CAP STAMPED "ODOT CONTROL 517", 0.10 FT. BELOW SURFACE, GOOD CONDITION	ST.HWY.42-014
518	542370.398	4139510.121	520.57	"EXTG" 1445+64.03	-22.00	5/2/11	FD. 5/8" IRON REBAR W/ 1 1/2" BRASS CAP STAMPED "ODOT CONTROL 518", 0.10 FT. BELOW SURFACE OF PAVEMENT, GOOD CONDITION	ST.HWY.42-014
1230	540865.389	4135865.962				5/2/11	FD. 2 1/2" BRASS DISK STAMPED " DOUGLAS COUNTY SURVEYOR T28S R6W S19 S20 S29 S30 1986" ON 1 1/2" IRON PIPE, 0.30 FT. ABOVE SURFACE, GOOD CONDITION	DCSO 1986
L741X	542945.675	4141292.337	517.64			5/2/11	FD. 1/2" STAINLESS STEEL ROD HAD THROUGH A 5" DIA. LOGO CAP COLLAR STAMPED "L741X 1987", 1.7 FT. BELOW SURFACE AT BACK OF SIDEWALK, GOOD CONDITION, LOGO CAP BROKEN	NGS
TBM4000	539591.358	4133970.885	560.56	"EXTG" 1383+64.66	47.87	5/2/11	DESTROYED 1" BRASS PLUG STAMPED "ODOT CONTROL TBM 4000" AT NE CORNER OF WEIGH SCALE BUILDING	ST.HWY.42-014
TBM4001	541546.538	4137699.909	542.68	"EXTG" 1425+80.18	-69.46	5/2/11	FD. 1" BRASS PLUG STAMPED "ODOT CONTROL TBM 4001", FLUSH IN CONCRETE CURB AT THE WESTERLY EXT OF DOUGLAS HIGH SCHOOL, GOOD CONDITION	ST.HWY.42-014
WT2	542063.356	4138767.620	534.40	"EXTG" 1437+62.91	-25.33	5/2/11	FD. 1 1/2" ALUMINUM CAP STAMPED "OREGON STATE HWY. DIV. WT 2 1991", FLUSH W/ CONCRETE SURFACE, GOOD CONDITION	ST.HWY.42-001
WT3	539672.216	4134335.787	556.94	"EXTG" 1387+33.44	24.36	5/2/11	FD. 1 1/2" ALUMINUM CAP STAMPED "OREGON STATE HWY. DIV. WT 3 1991", FLUSH W/ SURFACE, GOOD CONDITION	ST.HWY.42-001
NE51	542720.510	4138360.114				5/2/11	FD. 1 3/4" O.D. IRON PIPE W/ 3" BRASS DISK STAMPED "DOUGLAS CO. SURVEYORS OFFICE HOOTEN 1972", LEANS BADLY TO THE NW 0.20 FT. BELOW SURFACE, POOR CONDITION	DCSO 1972



SEE LINE LEGEND ON SHEET 3

REGISTERED PROFESSIONAL LAND SURVEYOR

Andrew David Ausland

OREGON
 JULY 15, 2003
 ANDREW DAVID AUSLAND
 56136
 EXPIRES: 12/31/2013

OREGON DEPARTMENT OF TRANSPORTATION
 RIGHT-OF-WAY BOUNDARY MONUMENTATION MAP
 OR42: HOOVER HILL - LOOKINGGLASS CREEK
 COOS BAY - ROSEBURG HWY. NO. 35, OR42, M.P. 68.61-72.61
 DOUGLAS COUNTY
 FILE: 13820RW.DGN MODEL: RWM

FOR ODOT REGION 3
 3500 N.W. STEWART PKWY.
 ROSEBURG, OR. 97470

MARCH 22, 2012
 SCALE: 1" = 500'
 SHEET 2 OF 8

ST. HWY 42 - 015 B