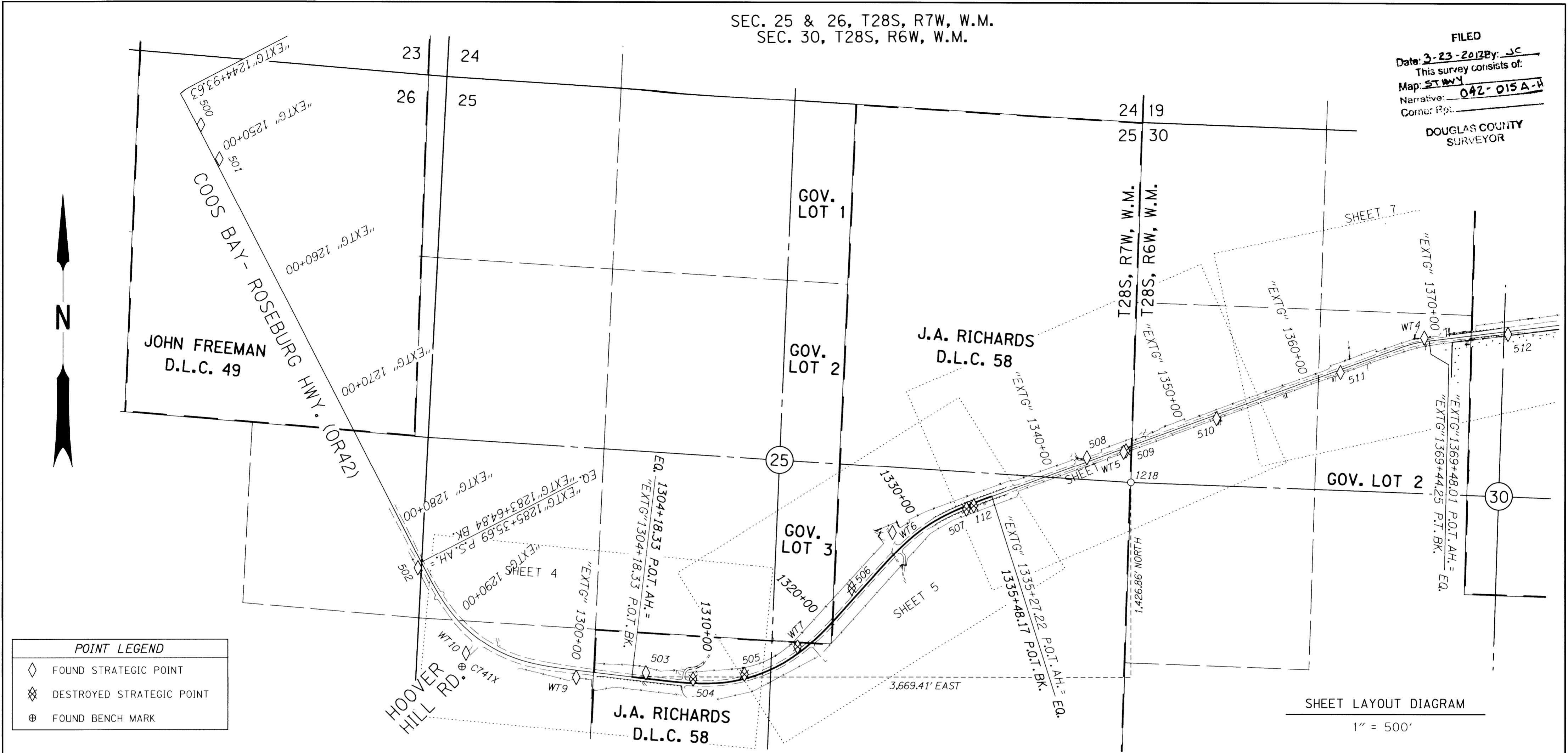


SEC. 25 & 26, T28S, R7W, W.M.
SEC. 30, T28S, R6W, W.M.

FILED
Date: 3-23-2013 By: JC
This survey consists of:
Map: ST HWY
Narrative: 042-015A-H
Corner: P.P.

DOUGLAS COUNTY
SURVEYOR



POINT LEGEND

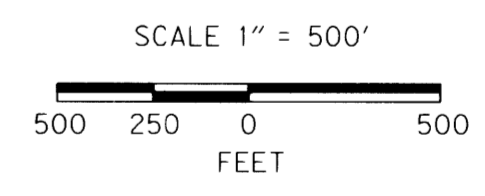
- ◇ FOUND STRATEGIC POINT
- ⊗ DESTROYED STRATEGIC POINT
- ⊕ FOUND BENCH MARK

SHEET LAYOUT DIAGRAM
1" = 500'

CONTROL MONUMENTS TABLE

NGS = NATIONAL GEODETIC SURVEY DCSO = DOUGLAS COUNTY SURVEYORS OFFICE CONST. = CONSTRUCTION

PT. NO.	LDP NORTHING	LDP EASTING	ELEV.	STATION	OFFSET (- IS LT.)	DATE	DESCRIPTION	REFERENCE
112	538253.544	4129208.924		"EXTG" 1333+79.36	19.28	5/2/11	DESTROYED 1/2" SQUARE IRON ROD W/ 1 1/2" ALUMINUM CAP STAMPED "ODOT HORIZ CONTROL 112"	ST.HWY.42-001
500	541039.067	4123522.743		"EXTG" 1247+72.10	-25.86	5/2/11	FD. 5/8" IRON REBAR W/ 1 1/2" BRASS CAP STAMPED "ODOT CONTROL 500", 0.1 FT. BELOW SURFACE, GOOD CONDITION	ST.HWY.42-014
501	540789.865	4123658.806		"EXTG" 1250+55.94	-32.54	5/2/11	FD. 5/8" IRON REBAR W/ 1 1/2" BRASS CAP STAMPED "ODOT CONTROL 501", 0.1 FT. BELOW SURFACE, GOOD CONDITION	ST.HWY.42-014
502	537792.877	4125122.221	754.54	"EXTG" 1285+61.16	40.74	5/2/11	FD. 5/8" IRON REBAR W/ 1 1/2" BRASS CAP STAMPED "ODOT CONTROL 502", 0.1 FT. BELOW SURFACE, GOOD CONDITION	ST.HWY.42-014
503	537028.850	4126798.399	727.26	1305+17.77	-42.06	5/2/11	FD. 5/8" IRON REBAR W/ 1 1/2" BRASS CAP STAMPED "ODOT CONTROL 503", FLUSH W/ SURFACE (DISTURBED DURING CONST.)	ST.HWY.42-014
504	536983.253	4127144.686	710.54	1308+69.31	-30.50	5/2/11	DESTROYED 5/8" IRON REBAR W/ 1 1/2" BRASS CAP STAMPED "ODOT CONTROL 504"	ST.HWY.42-014
505	537018.930	4127522.458	703.02	1312+59.63	-31.69	5/2/11	DESTROYED 5/8" IRON REBAR W/ 1 1/2" BRASS CAP STAMPED "ODOT CONTROL 505"	ST.HWY.42-014
506	537647.568	4128311.356	666.73	1323+09.70	-60.47	5/2/11	DESTROYED 5/8" IRON REBAR W/ 1 1/2" BRASS CAP STAMPED "ODOT CONTROL 506"	ST.HWY.42-014
507	538229.363	4129155.708	640.65	1333+41.21	21.24	5/2/11	DESTROYED 5/8" IRON REBAR W/ 1 1/2" BRASS CAP STAMPED "ODOT CONTROL 507"	ST.HWY.42-014
508	538607.649	4130041.207	632.12	"EXTG" 1342+82.56	-28.80	5/2/11	FD. 5/8" IRON REBAR W/ 1 1/2" BRASS CAP STAMPED "ODOT CONTROL 508", 0.1 FT. BELOW SURFACE, GOOD CONDITION	ST.HWY.42-014
509	538658.250	4130328.369	626.20	"EXTG" 1345+69.71	21.87	5/2/11	DESTROYED 1" BRASS PLUG STAMPED "ODOT CONTROL 509"	ST.HWY.42-014
510	538894.029	4130994.276	603.93	"EXTG" 1352+76.10	28.08	5/2/11	FD. 5/8" IRON REBAR W/ 1 1/2" BRASS CAP STAMPED "ODOT CONTROL 510", 0.1 FT. BELOW SURFACE, GOOD CONDITION	ST.HWY.42-014
511	539234.592	4131907.080	588.31	"EXTG" 1362+50.33	20.27	5/2/11	FD. 5/8" IRON REBAR W/ 1 1/2" BRASS CAP STAMPED "ODOT CONTROL 511", 0.3 FT. BELOW SURFACE, GOOD CONDITION	ST.HWY.42-014
C741X	537070.696	4125445.871	764.33			5/2/11	FD. 1/2" STAINLESS STEEL ROD HAD THROUGH A 5" DIAMETER LOGO CAP COLLAR STAMPED "C741X 1987", 0.1 FT. BELOW SURFACE, GOOD CONDITION	NGS
DELI	545861.872	4133118.976				5/2/11	FD. 3" BRASS DISK IN BEDROCK ON SOUTH SIDE OF LOOKINGGLASS RD. AT JUNCTION WITH CEDAR TREE DRIVE STAMPED "DOUGLAS COUNTY SURVEYORS OFFICE DELI 1985", 0.1 FT. ABOVE SURFACE, GOOD CONDITION (NOT SHOWN)	DCSO 1985
WT4	539488.466	4132523.957	578.20	"EXTG" 1369+13.01	-25.86	5/2/11	FD. 1 1/2" ALUMINUM CAP STAMPED "OREGON STATE HWY. DIV. WT 4 1991", 0.1 FT. BELOW SURFACE, GOOD CONDITION	ST.HWY.42-001
WT5	538647.465	4130310.652	625.80	"EXTG" 1345+49.37	25.95	5/2/11	FD. 1 1/2" ALUMINUM CAP STAMPED "OREGON STATE HWY. DIV. WT 5 1991", 0.2 FT. BELOW SURFACE, GOOD CONDITION	ST.HWY.42-001
WT6	538057.199	4128612.005	653.94	1328+04.93	-121.87	5/2/11	FD. 1 1/2" ALUMINUM CAP STAMPED "OREGON STATE HWY. DIV. WT 6 1991", FLUSH W/ SURFACE, GOOD CONDITION	ST.HWY.42-001
WT7	537220.075	4127913.468	687.79	1317+16.67	-41.31	5/2/11	DESTROYED RAILROAD SPIKE IN PAVED ACCESS	ST.HWY.42-001
WT9	536994.333	4126285.915	738.95	"EXTG" 1300+12.80	51.97	5/2/11	FD. 1 1/2" ALUMINUM CAP STAMPED "OREGON STATE HWY. DIV. WT 9 1991", FLUSH W/ SURFACE, GOOD CONDITION	ST.HWY.42-001
WT10	537168.664	4125475.696	762.81	"EXTG" 1292+32.94	140.20	5/2/11	FD. 1 1/2" ALUMINUM CAP STAMPED "OREGON STATE HWY. DIV. WT 10 1991", FLUSH W/ PAVED SURFACE, GOOD CONDITION	ST.HWY.42-001



SEE LINE LEGEND ON SHEET 3

REGISTERED PROFESSIONAL LAND SURVEYOR

ANDREW DAVID AUSLAND
JULY 15, 2003
56136
EXPIRES: 12/31/2013

OREGON DEPARTMENT OF TRANSPORTATION
RIGHT-OF-WAY BOUNDARY MONUMENTATION MAP
OR42: HOOVER HILL - LOOKINGGLASS CREEK
COOS BAY - ROSEBURG HWY. NO. 35, OR42, M.P. 68.61-72.61
DOUGLAS COUNTY
FILE: 13820RW.DGN MODEL: RWM

FOR ODOT REGION 3
3500 N.W. STEWART PKWY.
ROSEBURG, OR. 97470

MARCH 22, 2012
SCALE: 1" = 500'
SHEET 1 OF 8