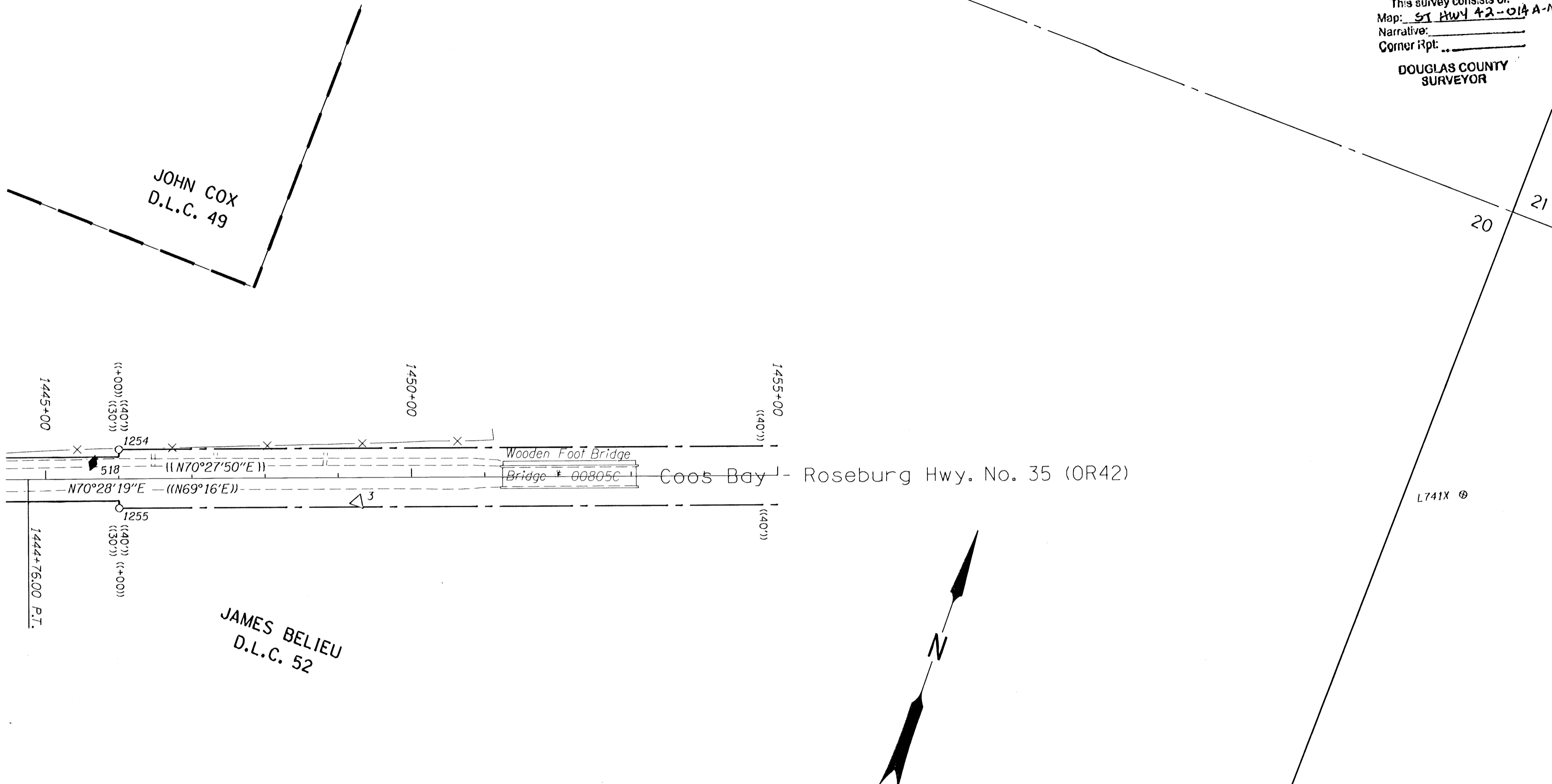


SEC. 20, T.28S., R.6W., W.M.

FILED
 Date: 8-3-2009 By: JC
 This survey consists of:
 Map: ST HWY 42-014 A-N
 Narrative:
 Corner Rpt:
 DOUGLAS COUNTY SURVEYOR



POINT LEGEND

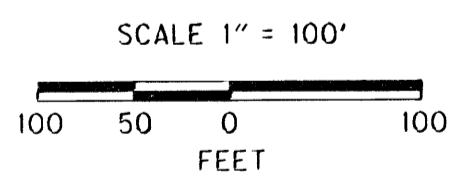
- FOUND MONUMENT
- ⊕ FOUND BENCH MARK
- ⊙ SET BENCH MARK
- △ FOUND ODOT NETWORK OR TRAVERSE POINT
- ◆ SET STRATEGIC POINT

RECORD DATA

- () PER ODOT R/W DRG. 10B-8-11
- (()) PER ODOT R/W DRG. 6B-28-22
- [] PER ODOT R/W DRG. 10C-54-2
- [[]] PER ODOT R/W DRG. 9B-34-12
- (|) PER ODOT R/W DRG. 10B-19-34

SEE CONTROL MONUMENT TABLE ON SHEET 2

SEE LINE LEGEND ON SHEET 3



REGISTERED PROFESSIONAL LAND SURVEYOR
 Marshall R. Wagstaff
 OREGON
 JANUARY 9, 2001
 MARSHALL R. WAGSTAFF
 49476LS
 EXPIRES 06/30/10

RECOVERED MONUMENTS

PT. ID.	LDP	LDP	STATION	OFFSET	DATE	DESCRIPTION	REFERENCE
	NORTHING	EASTING		(- IS LEFT)			
1254	542399.298	4139538.072	1448+00.03	-39.90	8/30/2008	FD. 5/8" I. ROD 0.20 FT. BELOW SURFACE GOOD COND.	M7-11
1255	542324.053	4139565.052	1448+00.31	40.04	8/29/2008	FD. 5/8" I. ROD 0.90 FT. BELOW SURFACE GOOD COND. R/W STATION 1448+00.40 RT	6B-28-22

SI FEET OREGON DEPARTMENT OF TRANSPORTATION
 HORIZONTAL CONTROL, RECOVERY AND RETRACEMENT MAP
 OR42: HOOVER HILL - LOOKINGGLASS CREEK PAVING
 COOS BAY - ROSEBURG HWY. NO. 35, OR42, M.P. 68.61-72.52
 DOUGLAS COUNTY
 FILE: 13820RW.DGN

FOR ODOT REGION 3
 3500 NW. STEWART PKWY.
 ROSEBURG, OR. 97470

JULY 30, 2009
 SCALE: 1" = 100'
 SHEET 14 OF 14

ST. HWY 42 - 014 N