

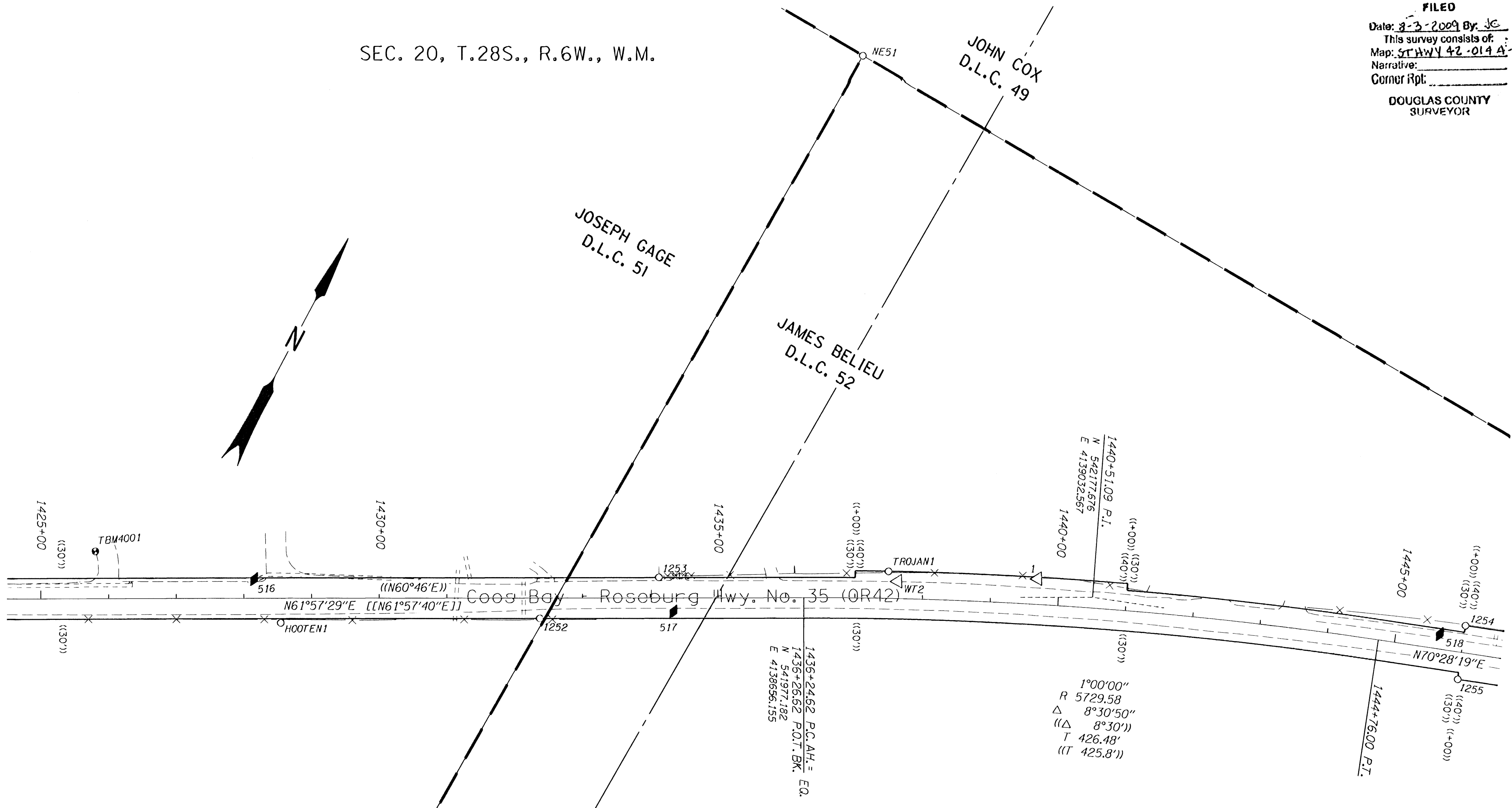
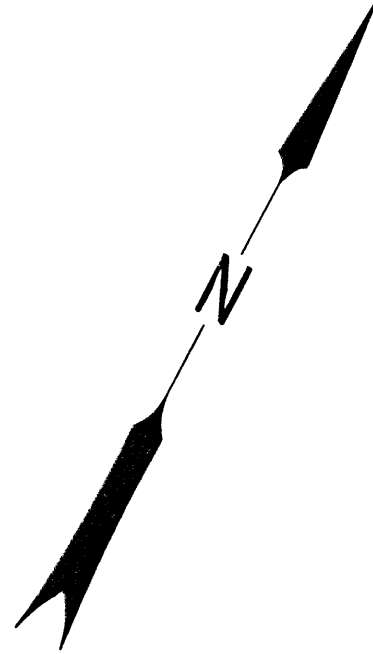
SEC. 20, T.28S., R.6W., W.M.

FILED
 Date: 8-3-2009 By: JC
 This survey consists of:
 Map: ST HWY 42-014 A-N
 Narrative:
 Corner Rpt:
DOUGLAS COUNTY
 SURVEYOR

JOSEPH GAGE
 D.L.C. 51

JOHN COX
 D.L.C. 49

JAMES BELIEU
 D.L.C. 52



1°00'00"
 R 5729.58
 Δ 8°30'50"
 ((Δ 8°30'))
 T 426.48'
 ((T 425.8'))

1436+24.62 P.C.A.H. = E.O.
 N 541977.182
 E 4138656.155

POINT LEGEND

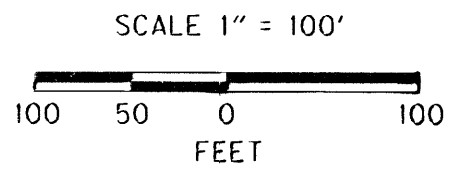
- FOUND MONUMENT
- ⊕ FOUND BENCH MARK
- ⊙ SET BENCH MARK
- △ FOUND ODOT NETWORK OR TRAVERSE POINT
- ◆ SET STRATEGIC POINT

RECORD DATA

- () PER ODOT R/W DRG. 10B-8-11
- (()) PER ODOT R/W DRG. 6B-28-22
- [] PER ODOT R/W DRG. 10C-54-2
- [[]] PER ODOT R/W DRG. 9B-34-12

SEE CONTROL MONUMENT TABLE ON SHEET 2

SEE LINE LEGEND ON SHEET 3



REGISTERED PROFESSIONAL LAND SURVEYOR
Marshall R. Wagstaff
 OREGON
 JANUARY 9, 2001
 MARSHALL R. WAGSTAFF
 49476LS
 EXPIRES 06/30/10

RECOVERED MONUMENTS

PT. ID.	LDP NORTHING	LDP EASTING	STATION	OFFSET (+ IS LEFT)	DATE	DESCRIPTION	REFERENCE
1252	541787.432	4138328.182	1432+38.77	30.00	8/29/2008	FD. 5/8" I. REBAR W/ 1 1/4" PLASTIC CAP STAMPED "BTS ENG. SURV." FLUSH W/ SURFACE GOOD COND.	1998-0029
1253	541903.239	4138453.123	1434+12.68	-30.19	8/24/2008	FD. 1/2" I. ROD 0.10 FT. BELOW SURFACE GOOD COND.	M7-11
NE51	542720.510	4138360.114			8/29/2008	FD. 1 1/4" IRON PIPE W/ 2 1/2" BRASS DISK STAMPED "COUNTY SURVEYORS OFFICE T283 R6W DLC 49 DLC 51 DLC 52" 1.0 FT. ABOVE SURFACE GOOD CONDITION.	M8-28
HOOTEN1	541582.018	4137991.687	1428+54.38	38.40	8/24/2008	FD. 1 3/4" O.D. I. PIPE W/ 3" BRASS DISK STAMPED "DOUGLAS CO. SURVEYORS OFFICE HOOTEN 1972" LEANS BADLY TO THE NW 0.20 FT. BELOW SURFACE POOR COND.	DOUG. CO. 1972

SI FEET OREGON DEPARTMENT OF TRANSPORTATION
 HORIZONTAL CONTROL, RECOVERY AND RETRACEMENT MAP
 OR42: HOOVER HILL - LOOKINGGLASS CREEK PAVING
 COOS BAY - ROSEBURG HWY. NO. 35, OR42, M.P. 68.61-72.52
 DOUGLAS COUNTY
 FILE: 13820RW.DGN

FOR ODOT REGION 3
 3500 NW. STEWART PKWY.
 ROSEBURG, OR. 97470

JULY 30, 2009
 SCALE: 1" = 100'
 SHEET 13 OF 14