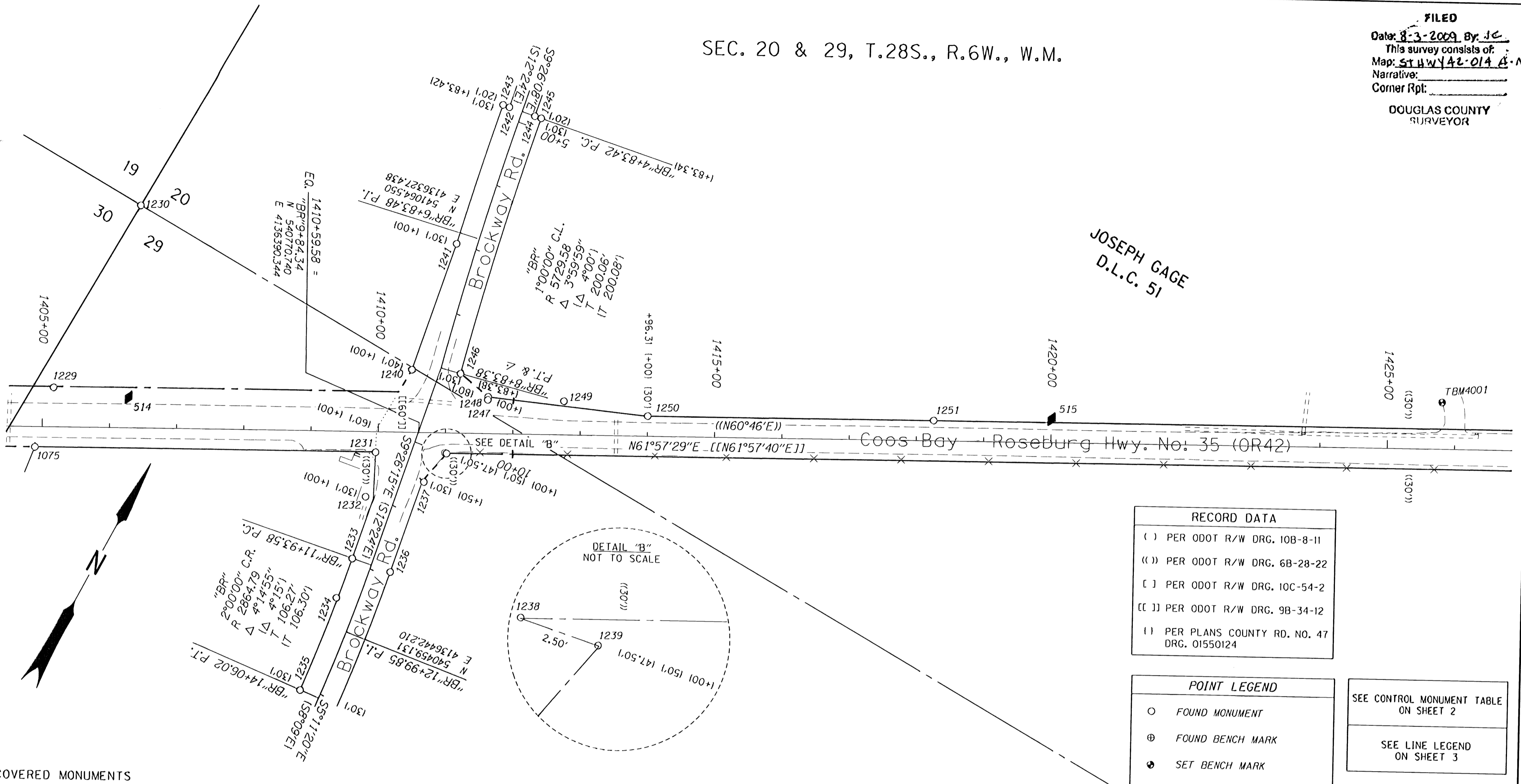


SEC. 20 & 29, T.28S., R.6W., W.M.

FILED
 Date: 8-3-2009 By: J.C.
 This survey consists of:
 Map: ST HWY 42-014 L-N
 Narrative:
 Corner Rpt:

DOUGLAS COUNTY
 SURVEYOR

JOSEPH GAGE
 D.L.C. 51

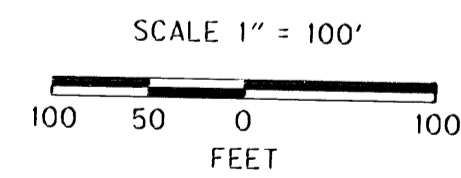


RECORD DATA	
()	PER ODOT R/W DRG. 10B-8-11
(())	PER ODOT R/W DRG. 6B-28-22
[]	PER ODOT R/W DRG. 10C-54-2
[[]]	PER ODOT R/W DRG. 9B-34-12
()	PER PLANS COUNTY RD. NO. 47 DRG. 01550124

POINT LEGEND	
○	FOUND MONUMENT
⊕	FOUND BENCH MARK
⊙	SET BENCH MARK
△	FOUND ODOT NETWORK OR TRAVERSE POINT
◆	SET STRATEGIC POINT

SEE CONTROL MONUMENT TABLE
ON SHEET 2

SEE LINE LEGEND
ON SHEET 3



REGISTERED
 PROFESSIONAL
 LAND SURVEYOR

Marshall R. Wagstaff

OREGON
 JANUARY 3, 2001
 MARSHALL R. WAGSTAFF
 49478LS

EXPIRES 06/30/10

RECOVERED MONUMENTS

PT. ID.	LDP NORTHING	LDP EASTING	ELEV.	LINE	STATION	OFFSET (- IS LEFT)	DATE	DESCRIPTION	REFERENCE
1231	540713.818	4138349.204		"BR"	10+33.58	50.02	8/24/2008	FD. 5/8" I. REBAR 0.20 FT. BELOW A.C. SURFACE POOR COND. BENT TO EAST TIED WHERE ROD ENTERS GROUND.	M105-33
1232	540848.598	4138368.132		"BR"	11+00.80	42.01	8/30/2008	FD. 5/8" I. REBAR W/ 1 1/4" UNREADABLE PLASTIC CAP FLUSH W/ SURFACE GOOD COND.	M105-33
1233	540868.911	4138395.207		"BR"	11+93.71	30.01	8/24/2008	FD. 5/8" I. REBAR W/ 1 1/4" PLASTIC CAP DAMAGED AND UNREADABLE. 0.40 FT. BELOW A.C.	M105-33
1234	540468.403	4138402.790		"BR"	12+57.34	32.07	8/24/2008	FD. 5/8" I. REBAR W/ 1 1/4" PLASTIC CAP STAMPED "BENTZ SUR. INC." 0.30 FT. BELOW SURFACE GOOD COND.	M105-33
1235	540360.588	4138421.943		"BR"	14+08.02	30.00	8/24/2008	FD. 3/4" I. ROD 0.20 FT. BELOW SURFACE GOOD COND.	M105-33
1238	540568.773	4138454.402		"BR"	11+93.69	-30.01	8/24/2008	FD. 3/4" I. ROD 0.10 FT. ABOVE SURFACE GOOD COND. PADDLE BOARD NEARBY MARKED "CRRW 75+85.85 30"	CO. RD. 47 SHT 1
1237	540709.842	4138433.487		"BR"	10+51.10	-32.49	8/24/2008	FD. 5/8" I. REBAR W/ 1 1/4" PLASTIC CAP STAMPED "BTS ENG. SURV." 0.30 FT. ABOVE SURFACE GOOD COND.	CO. RD. 47 SHT 1
1238	540782.738	4138439.913		"BR"	9+99.97	-47.52	8/24/2008	FD. 5/8" I. REBAR W/ 1 1/4" PLASTIC CAP STAMPED "BTS ENG. SURV." 0.30 FT. ABOVE SURFACE GOOD COND.	1998-0029
1239	540783.129	4138442.328		"BR"	9+99.98	-49.98	8/24/2008	FD. 5/8" I. REBAR W/ 1 1/4" PLASTIC CAP STAMPED "BTS ENG. SURV." 0.10 FT. ABOVE SURFACE GOOD COND.	1998-0029
1240	540848.998	4138337.182		"BR"	9+00.01	40.03	8/24/2008	FD. 5/8" I. REBAR W/ 1 1/4" PLASTIC CAP STAMPED "BTS ENG. SURV." 0.10 FT. ABOVE SURFACE GOOD COND.	1998-0029
1241	541042.930	4138304.758		"BR"	7+00.01	30.03	8/24/2008	FD. 5/8" I. REBAR W/ 1 1/4" PLASTIC CAP STAMPED "BTS ENG. SURV." 0.10 FT. ABOVE SURFACE GOOD COND.	M122-45
1242	541258.522	4138274.949		"BR"	4+83.53	19.98	8/24/2008	FD. 5/8" I. REBAR BENT SLIGHTLY SE FLUSH W/ SURFACE FAIR COND.	M122-45
1243	541257.031	4138284.969		"BR"	4+83.38	30.08	8/24/2008	FD. 3/4" I. REBAR 0.10 FT. ABOVE SURFACE BENT SOUTH TIED WHERE ROD ENTERS GROUND POOR COND.	M122-45
1244	541265.290	4138314.331		"BR"	4+83.31	-19.98	8/24/2008	FD. 5/8" I. REBAR W/ 1 1/4" PLASTIC CAP STAMPED "BTS ENG. SURV." 0.10 FT. BELOW SURFACE GOOD COND.	CO. RD. 47 SHT 1
1245	541287.083	4138324.080		"BR"	4+83.13	-29.87	8/24/2008	FD. 3/4" I. ROD 0.20 FT. BELOW SURFACE GOOD COND. A 5/8" I. REBAR 0.20 FT. SOUTH LEANS NORTH OVER TOP OF POINT	M122-45
1248	540878.932	4138403.100		"BR"	8+83.38	-30.00	8/24/2008	FD. 5/8" I. REBAR W/ 1 1/4" PLASTIC CAP STAMPED "BTS ENG. SURV." 0.10 FT. ABOVE SURFACE GOOD COND.	CO. RD. 47 SHT 1
1247	540882.808	4138457.352	527.94	"BR"	9+04.31	-81.10	8/24/2008	FD. 5/8" I. REBAR W/ 1 1/4" PLASTIC CAP STAMPED "BTS ENG. SURV." 0.10 FT. ABOVE SURFACE GOOD COND.	M122-45
1248	540868.738	4138455.572		"BR"	8+99.95	-80.02	8/24/2008	FD. 5/8" I. REBAR W/ 1 1/4" PLASTIC CAP STAMPED "BTS ENG. SURV." 0.10 FT. ABOVE SURFACE GOOD COND.	M122-45
1249	540915.790	4138557.182			1412+75.08	-49.97	8/24/2008	FD. 5/8" I. REBAR W/ 1 1/4" PLASTIC CAP STAMPED "OSHD" FLUSH W/ SURFACE GOOD COND. PADDLE BOARD NEARBY MARKED "SHRW 1412+75 POT 50 LT"	M122-45
1250	540958.878	4138678.898			1414+00.08	-29.98	8/24/2008	FD. 5/8" I. REBAR W/ 1 1/4" PLASTIC CAP STAMPED "OSHD" FLUSH W/ SURFACE GOOD COND. PADDLE BOARD NEARBY MARKED "SHRW 1414+00 POT 30 LT"	9B-34-12
1251	541158.789	4137052.183			1418+25.25	-29.98	8/24/2008	FD. 1" X 1" ANGLE IRON 0.40 FT. ABOVE SURFACE GOOD COND.	9B-34-12 CS 45/95

SI FEET

OREGON DEPARTMENT OF TRANSPORTATION

HORIZONTAL CONTROL, RECOVERY AND RETRACEMENT MAP
 OR42: HOOVER HILL - LOOKINGGLASS CREEK PAVING
 COOS BAY - ROSEBURG HWY. NO. 35, OR42, M.P. 68.61-72.52

DOUGLAS COUNTY
 FILE: I3820RW.DGN

FOR ODOT REGION 3
 3500 NW. STEWART PKWY.
 ROSEBURG, OR. 97470

JULY 30, 2009
 SCALE: 1" = 100'
 SHEET 12 OF 14

ST. HWY 42 - 014 L