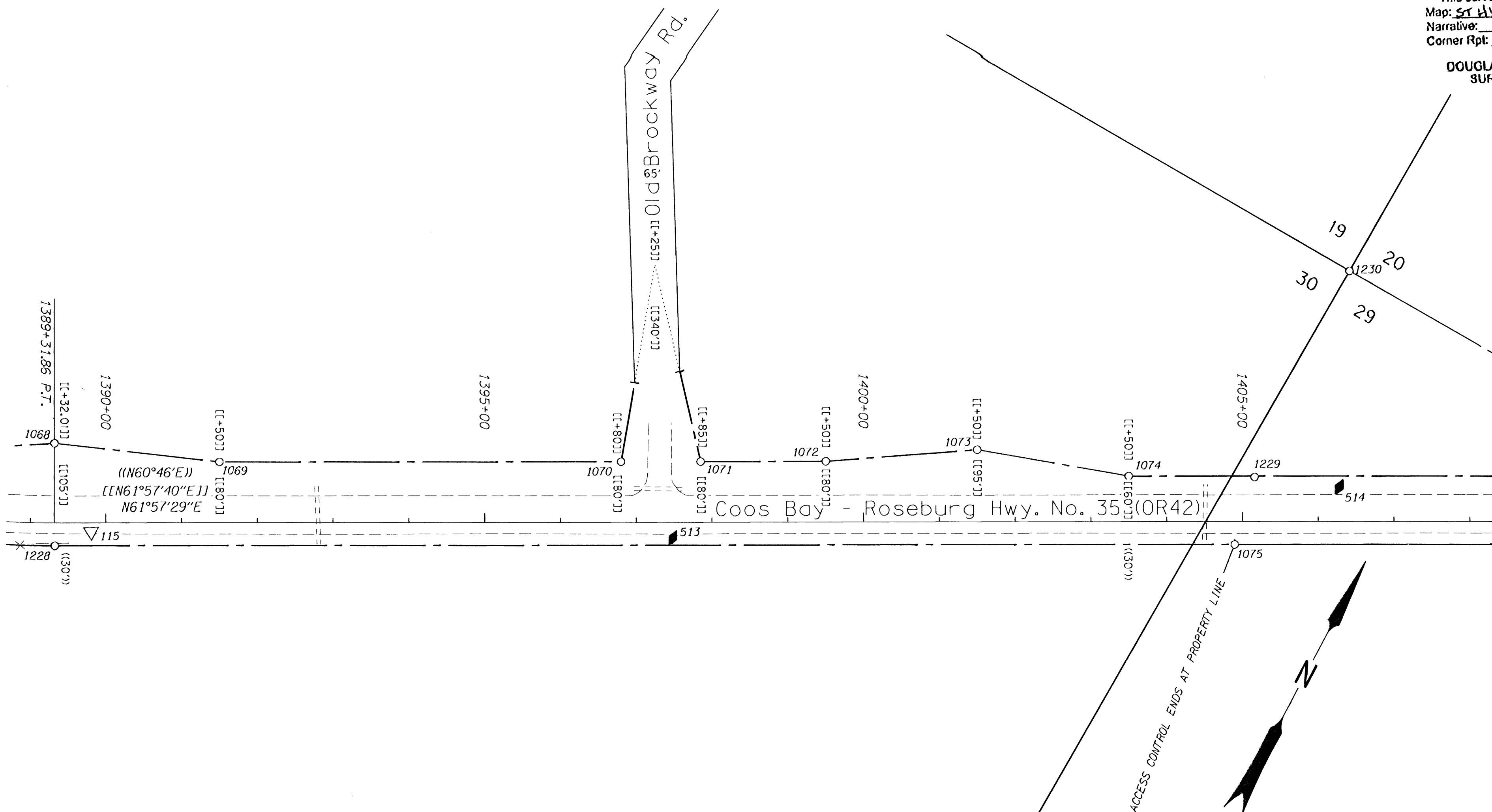


SEC. 29 & 30, T.28S., R.6W., W.M.

FILED
 Date: 8-3-2009 By: JC
 This survey consists of:
 Map: ST HWY 42-014 A-N
 Narrative:
 Corner Rpt:
 DOUGLAS COUNTY SURVEYOR



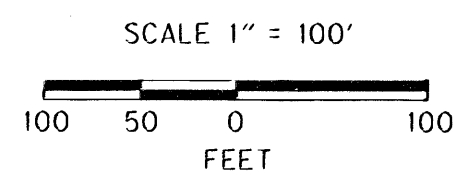
POINT LEGEND

- FOUND MONUMENT
- ⊕ FOUND BENCH MARK
- ⊙ SET BENCH MARK
- △ FOUND ODOT NETWORK OR TRAVERSE POINT
- ◆ SET STRATEGIC POINT

RECORD DATA

- () PER ODOT R/W DRG. 10B-8-11
- (()) PER ODOT R/W DRG. 6B-28-22
- [] PER ODOT R/W DRG. 10C-54-2
- [[]] PER ODOT R/W DRG. 9B-34-12

SEE CONTROL MONUMENT TABLE ON SHEET 2
 SEE LINE LEGEND ON SHEET 3



REGISTERED PROFESSIONAL LAND SURVEYOR
 Marshall R. Wagstaff
 OREGON JANUARY 9, 2001
 MARSHALL R. WAGSTAFF 49478LS
 EXPIRES 06/30/10

RECOVERED MONUMENTS

PT. ID.	LDP NORTHING	LDP EASTING	STATION	OFFSET (- IS LEFT)	DATE	DESCRIPTION	REFERENCE
1070	540192.318	4135135.279	1398+79.98	-79.90	8/24/2008	FD. 5/8" I. REBAR W/ 1 1/4" PLASTIC CAP STAMPED "OSHD R/W" 0.10 FT. BELOW SURFACE GOOD COND. R/W STATION 1398+80 80 LT"	9B-34-12
1071	540241.877	4135227.921	1397+84.95	-79.91	8/24/2008	FD. 5/8" I. REBAR W/ 1 1/4" DAMAGED PLASTIC CAP STAMPED "SHD" 0.10 FT. BELOW SURFACE GOOD COND. R/W STATION 1397+85 80 LT"	9B-34-12
1072	540319.284	4135373.827	1399+50.04	-79.90	8/24/2008	FD. 5/8" I. REBAR W/ 1 1/4" PLASTIC CAP STAMPED "OSHD" 0.10 FT. ABOVE SURFACE GOOD COND. PADDLE BOARD NEARBY MARKED "SHRW 1399+50 POT 80 LT"	9B-34-12
1073	540428.472	4135543.047	1401+49.98	-94.88	8/24/2008	FD. 5/8" I. REBAR W/ 1 1/4" PLASTIC CAP STAMPED "OSHD" 0.10 FT. BELOW SURFACE GOOD COND. PADDLE BOARD NEARBY MARKED "SHRW 1401+50 POT 95 LT"	9B-34-12
1074	540489.618	4135735.902	1403+49.88	-59.93	8/24/2008	FD. 5/8" I. REBAR 0.30 FT. BELOW SURFACE PADDLE BOARD NEARBY MARKED "SHRW 1403+50 POT 60 LT"	9B-34-12
1075	540475.829	4135901.815	1404+89.54	30.32	8/30/2008	FD. 5/8" I. REBAR W/ 1 1/4" PLASTIC CAP STAMPED "BENTZ SUR. INC." 0.40 FT. ABOVE SURFACE GOOD COND.	M105-33
1229	540568.278	4135883.151	1405+15.88	-58.37	8/24/2008	FD. 5/8" I. REBAR W/ 1 1/4" PLASTIC CAP STAMPED "BTS ENG. SURV." FLUSH W/ SURFACE GOOD COND.	M122-45
1230	540865.389	4135865.962	1408+41.31	-330.44	8/29/2008	FD. 1 1/2" I. PIPE W/ 2 1/2" BRASS DISK STAMPED "DOUGLAS COUNTY SURVEYORS 1988 T28S R6W S19 S20 S29 S30" 0.30 FT. ABOVE SURFACE GOOD COND.	CS 82/31

SI FEET OREGON DEPARTMENT OF TRANSPORTATION
 HORIZONTAL CONTROL, RECOVERY AND RETRACEMENT MAP
 OR42: HOOVER HILL - LOOKINGGLASS CREEK PAVING
 COOS BAY - ROSEBURG HWY. NO. 35, OR42, M.P. 68.61-72.52
 DOUGLAS COUNTY
 FILE: 13820RW.DGN

FOR ODOT REGION 3
 3500 NW. STEWART PKWY.
 ROSEBURG, OR. 97470

JULY 30, 2009
 SCALE: 1" = 100'
 SHEET 11 OF 14