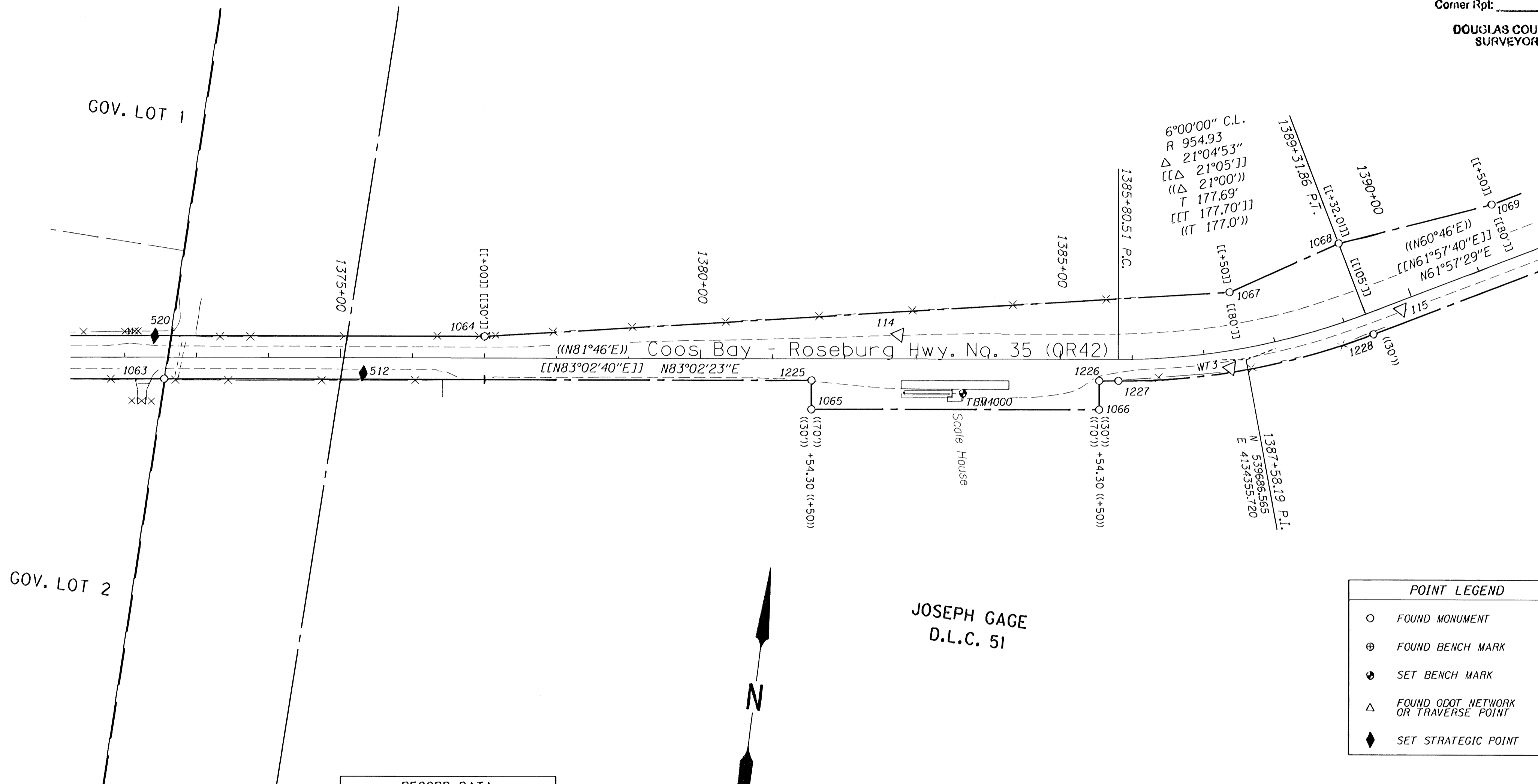


SEC. 30, T.28S., R.6W., W.M.

FILED  
 Date: 8/3/2009 By: JC  
 This survey consists of:  
 Map: ST HWY 42-014A-N  
 Narrative:  
 Corner Rpt:  
 DOUGLAS COUNTY  
 SURVEYOR



RECORD DATA

( ) PER ODOT R/W DRG. 10B-8-11  
 (( )) PER ODOT R/W DRG. 6B-28-22  
 [ ] PER ODOT R/W DRG. 10C-54-2  
 [[ ]] PER ODOT R/W DRG. 9B-34-12

JOSEPH GAGE  
 D.L.C. 51

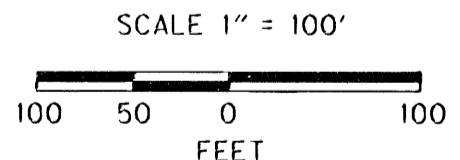


POINT LEGEND

- FOUND MONUMENT
- ⊕ FOUND BENCH MARK
- ⊙ SET BENCH MARK
- △ FOUND ODOT NETWORK OR TRAVERSE POINT
- ◆ SET STRATEGIC POINT

SEE CONTROL MONUMENT TABLE  
 ON SHEET 2

SEE LINE LEGEND  
 ON SHEET 3



REGISTERED  
 PROFESSIONAL  
 LAND SURVEYOR  
*Marshall R. Wagstaff*  
 OREGON  
 JANUARY 9, 2001  
 MARSHALL R. WAGSTAFF  
 43478LS  
 EXPIRES 06/30/10

RECOVERED MONUMENTS

PT. ID.	LDP	LDP	STATION	OFFSET	DATE	DESCRIPTION	REFERENCE
	NORTHING	EASTING		(- IS LEFT)			
1083	539474.656	4132887.041	1372+54.81	29.95	8/24/2008	FD. 5/8" I. REBAR 0.30 FT. ABOVE SURFACE GOOD COND.	M75-15
1084	539588.090	4133301.692	1377+00.00	-29.98	8/24/2008	FD. 5/8" I. REBAR W/ 1 1/4" PLASTIC CAP STAMPED "OSHD" 0.20 FT. BELOW SURFACE GOOD COND. PADDLE BOARD NEARBY MARKED "SHRW 1377+00 POT 30 LT"	9B-34-12
1085	539543.583	4133784.827	1381+54.33	70.32	8/30/2008	FD. 5/8" I. ROD 0.20 FT. ABOVE SURFACE GOOD COND. STATE RW	6B-28-22
1086	539592.368	4134181.774	1385+54.28	70.00	8/30/2008	FD. 5/8" I. ROD 0.25 FT. ABOVE SURFACE GOOD COND. 4" X 4" WOOD RW POST NEARBY MARKED "SHRW"	6B-28-22
1087	539778.848	4134321.362	1387+50.04	-80.03	8/24/2008	FD. 5/8" I. REBAR W/ 1 1/4" PLASTIC CAP STAMPED "OSHD" FLUSH W/ SURFACE GOOD COND. PADDLE BOARD NEARBY MARKED "SHRW 1387+50 POC 80 LT"	9B-34-12
1088	539882.885	4134483.359	1389+32.08	-105.00	8/24/2008	FD. 5/8" I. REBAR W/ 1 1/4" PLASTIC CAP STAMPED "OSHD" 0.10 FT. ABOVE SURFACE GOOD COND. PADDLE BOARD NEARBY MARKED "SHRW 1389+32.01 PT 105 LT"	9B-34-12
1089	539943.298	4134687.489	1391+50.04	-80.03	8/24/2008	FD. 5/8" I. REBAR W/ 1 1/4" PLASTIC CAP STAMPED "OSHD" R/W" FLUSH W/ SURFACE GOOD COND. PADDLE BOARD NEARBY MARKED "SHRW 1391+50 POT 80 LT"	9B-34-12
1225	539583.612	4133780.110	1381+54.50	30.02	8/24/2008	FD. 5/8" I. ROD W/ DAMAGED 1 1/4" PLASTIC CAP FLUSH W/ CONCRETE GOOD COND.	1998-0035
1228	539832.101	4134158.929	1385+54.27	29.97	8/24/2008	FD. 5/8" I. REBAR W/ 1 1/4" PLASTIC CAP STAMPED "BTS ENG. SURV." 0.50 FT. BELOW SURFACE GOOD COND.	1998-0035
1227	539835.387	4134183.408	1385+80.94	29.92	8/24/2008	FD. 5/8" I. REBAR W/ 1 1/4" PLASTIC CAP STAMPED "BTS ENG. SURV." 0.20 FT. ABOVE SURFACE GOOD COND.	1998-0035
1228	539743.750	4134527.074	1389+32.30	30.08	8/24/2008	FD. 5/8" I. REBAR W/ 1 1/4" PLASTIC CAP STAMPED "BTS ENG. SURV." 0.20 FT. ABOVE SURFACE GOOD COND.	1998-0035

SI FEET  
 OREGON DEPARTMENT OF TRANSPORTATION  
 HORIZONTAL CONTROL, RECOVERY AND RETRACEMENT MAP  
 OR42: HOOVER HILL - LOOKINGGLASS CREEK PAVING  
 COOS BAY - ROSEBURG HWY. NO. 35, OR42, M.P. 68.61-72.52  
 DOUGLAS COUNTY  
 FILE: 13820RW.DGN

FOR ODOT REGION 3  
 3500 NW, STEWART PKWY.  
 ROSEBURG, OR. 97470

JULY 30, 2009  
 SCALE: 1" = 100'  
 SHEET 10 OF 14