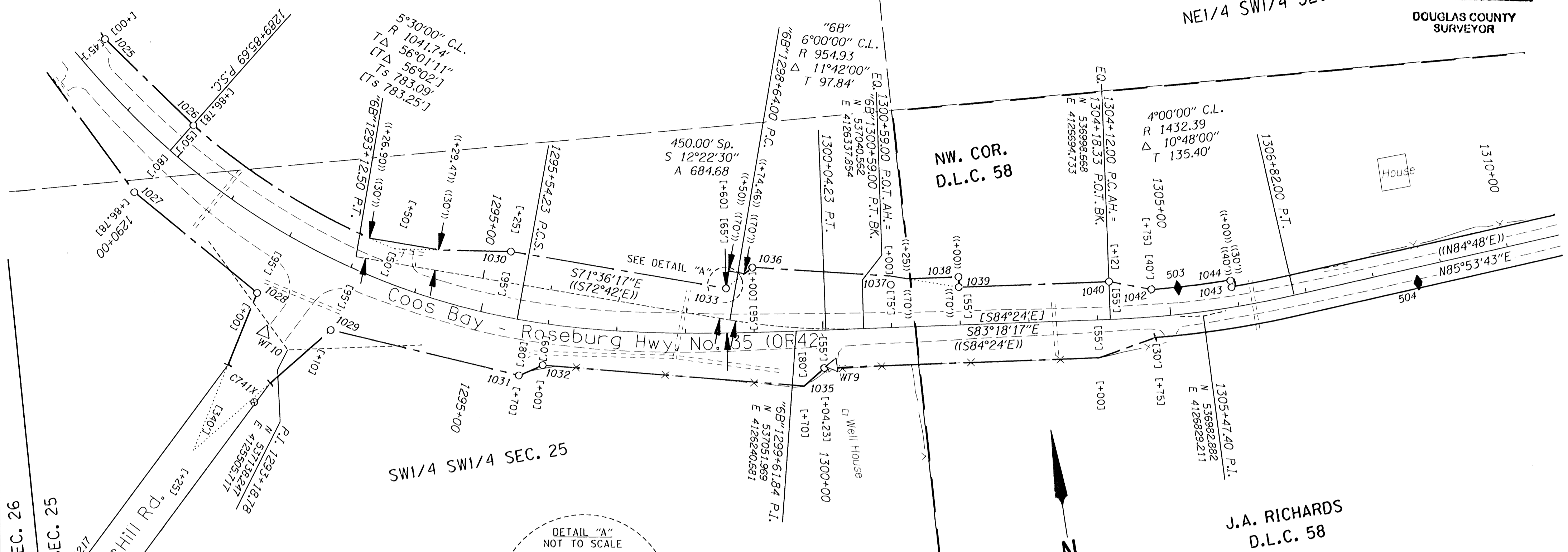


SEC. 25, T.28S., R.7W., W.M.

FILED
 Date: 4-3-2009 By: JC
 This survey consists of:
 Map: SHW 42-014A-N
 Narrative:
 Corner Rpt:
 DOUGLAS COUNTY
 SURVEYOR

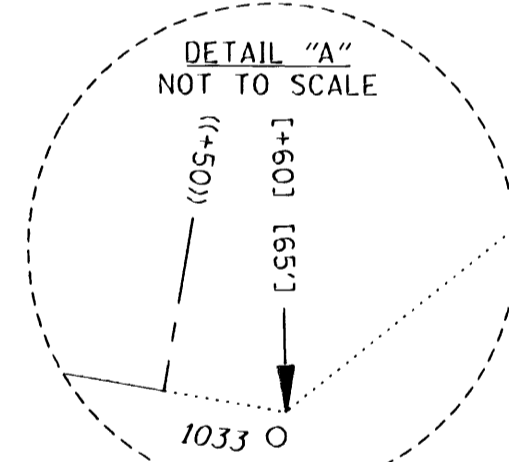
NE1/4 SW1/4 SEC. 25



SEC. 26
 SEC. 25

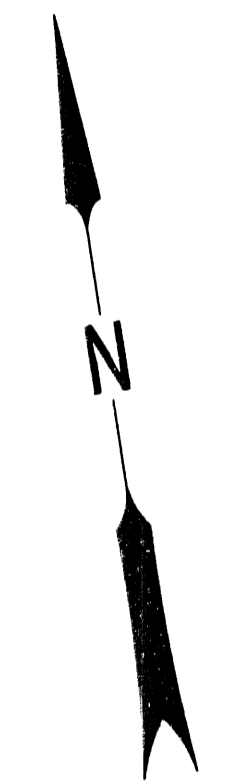
Hoover Hill Rd.
 1216
 1217
 1218
 1219
 1220
 1221
 1222
 1223
 1224
 1225
 1226
 1227
 1228
 1229
 1230
 1231
 1232
 1233
 1234
 1235
 1236
 1237
 1238
 1239
 1240
 1241
 1242
 1243
 1244
 1245
 1246
 1247
 1248
 1249
 1250

SW1/4 SW1/4 SEC. 25



SEE CONTROL MONUMENT TABLE ON SHEET 1

SEE LINE LEGEND ON SHEET 3



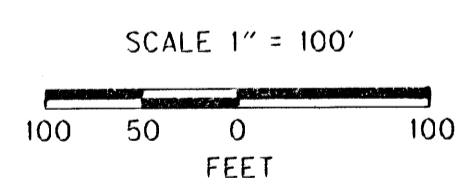
J.A. RICHARDS
 D.L.C. 58

RECORD DATA	
()	PER ODOT R/W DRG. 10B-8-11
(())	PER ODOT R/W DRG. 6B-28-22
[]	PER ODOT R/W DRG. 10C-54-2
[[]]	PER ODOT R/W DRG. 9B-34-12

POINT LEGEND	
○	FOUND MONUMENT
⊕	FOUND BENCH MARK
⊙	SET BENCH MARK
△	FOUND ODOT NETWORK OR TRAVERSE POINT
◆	SET STRATEGIC POINT

RECOVERED MONUMENTS

PT. ID.	LDP NORTHING	LDP EASTING	ELEV.	LINE	STATION	OFFSET (- IS LEFT)	DATE	DESCRIPTION	REFERENCE
1028	537482.027	4125419.951			1289+88.82	-50.01	8/28/2008	FD. 5/8" I. REBAR W/ 1 1/4" PLASTIC CAP STAMPED "OREGON STATE HIGHWAY DIV." 0.3 FT. ABOVE SURFACE GOOD COND. RW STATION 1289+88.78 PSC 50 LT	10C-54-2
1027	537399.021	4125319.940			1289+88.78	79.98	8/28/2008	FD. 5/8" I. REBAR W/ 1 1/4" PLASTIC CAP STAMPED "OREGON STATE HIGHWAY DIV." 0.1 FT. ABOVE SURFACE GOOD COND. PADDLE BOARD NEARBY MARKED "SHRW 1284+00 POT 80 RT" CORRECT RW STATION IS 1289+88.78 PSC	10C-54-2
1028	537228.888	4125474.224			1291+99.93	95.00	8/28/2008	FD. 5/8" I. REBAR W/ 1 1/4" PLASTIC CAP STAMPED "OREGON STATE HIGHWAY DIV." 0.4 FT. BELOW SURFACE GOOD COND. PADDLE BOARD NEARBY MARKED "SHRW 1292+00 POC 95 RT"	10C-54-2
1029	537157.002	4125571.855			1293+10.01	95.14	8/28/2008	FD. 5/8" I. REBAR W/ 1 1/4" PLASTIC CAP STAMPED "OREGON STATE HIGHWAY DIV." 0.3 FT. BELOW SURFACE GOOD COND. PADDLE BOARD NEARBY MARKED "SHRW 1293+10 POC 95 RT"	10C-54-2
1030	537229.818	4125848.384		"6B"	1295+33.45	-44.98	8/24/2008	FD. 5/8" I. REBAR W/ 1 1/4" PLASTIC CAP STAMPED "OREGON STATE HIGHWAY DIV." 0.3 FT. BELOW SURFACE GOOD COND. STINGER NEARBY.	10C-54-2
1031	537050.107	4125832.178			1295+69.92	80.14	8/28/2008	FD. 5/8" I. REBAR W/ 1 1/4" PLASTIC CAP STAMPED "OREGON STATE HIGHWAY DIV." 0.2 FT. BELOW SURFACE GOOD COND. PADDLE BOARD NEARBY MARKED "SHRW 1295+00 POS 80 RT"	10C-54-2
1032	537059.838	4125868.820			1295+99.94	60.12	8/28/2008	FD. 5/8" I. REBAR W/ 1 1/4" PLASTIC CAP STAMPED "OREGON STATE HIGHWAY DIV." 0.2 FT. BELOW SURFACE GOOD COND. BENT PADDLE BOARD NEARBY MARKED "SHRW 1298+00 POS 80 RT"	10C-54-2
1033	537129.045	4128149.265			1298+59.93	-84.84	8/28/2008	FD. 5/8" I. REBAR W/ 1 1/4" PLASTIC CAP STAMPED "OREGON STATE HIGHWAY DIV." 0.3 FT. BELOW SURFACE GOOD COND. PADDLE BOARD NEARBY MARKED "SHRW 1298+00 POS 85 LT"	10C-54-2
1035	536992.823	4128272.788			1299+99.94	55.00	8/28/2008	FD. 5/8" I. REBAR W/ 1 1/4" PLASTIC CAP STAMPED "OREGON STATE HIGHWAY DIV." FLUSH W/ SURFACE GOOD COND. PADDLE BOARD NEARBY MARKED "SHRW 1300+00 POS 55 RT"	10C-54-2
1038	537153.260	4128191.791			1298+59.99	-94.50	8/28/2008	FD. 5/8" I. REBAR W/ 1 1/4" PLASTIC CAP STAMPED "OREGON STATE HIGHWAY DIV." 0.3 FT. ABOVE SURFACE GOOD COND. PADDLE BOARD NEARBY MARKED "SHRW 1301+00 POT 75 LT"	10C-54-2
1037	537097.403	4128388.885	747.80		1301+01.07	-82.17	8/24/2008	FD. 5/8" I. REBAR W/ 1 1/4" PLASTIC CAP STAMPED "OREGON STATE HIGHWAY DIV." 0.2 FT. ABOVE SURFACE GOOD COND. PADDLE BOARD NEARBY MARKED "SHRW 1301+00 POT 75 LT"	10C-54-2
1038	537093.542	4128488.031			1301+99.99	-69.89	8/24/2008	FD. 5/8" I. ROD 0.15 FT. ABOVE SURFACE GOOD COND. RW STATION 1302+00 OFFSET UNKNOWN	10C-54-2
1039	537078.738	4128484.079			1301+99.78	-54.98	8/24/2008	FD. 5/8" I. REBAR W/ 1 1/4" PLASTIC CAP STAMPED "OREGON STATE HIGHWAY DIV." 0.1 FT. BELOW SURFACE GOOD COND. PADDLE BOARD NEARBY MARKED "SHRW 1302+00 POT 55 LT"	10C-54-2
1040	537053.293	4128701.147			1304+12.00	-55.00	8/24/2008	FD. 5/8" I. REBAR W/ 1 1/4" PLASTIC CAP STAMPED "OREGON STATE HIGHWAY DIV." 0.2 FT. BELOW SURFACE GOOD COND. PADDLE BOARD NEARBY MARKED "SHRW 1304+12.00 PC AH = 1304+18.51 POT BK 55 LT"	10C-54-2
1042	537032.732	4128760.248			1304+74.88	-40.13	8/24/2008	FD. 5/8" I. REBAR 0.40 FT. BELOW SURFACE FAIR COND. BENT TO NW RW STATION 1304+75 50 LT	10C-54-2
1043	537017.791	4128875.981			1306+93.92	-28.82	8/24/2008	FD. 3/4" I. ROD 0.10 FT. BELOW SURFACE BENT EASTERLY TIED WHERE ROD ENTERS GROUND POOR COND. RW STATION 1308+00 30 LT	8B-28-22
1044	537027.882	4128875.730	717.88		1306+93.77	-38.71	8/24/2008	FD. 3/4" I. ROD 0.10 FT. BELOW SURFACE BENT WESTERLY TIED WHERE ROD ENTERS GROUND POOR COND. RW STATION 1308+00 40 LT	8B-28-22
1218	536831.321	4125205.500			1292+23.44	572.23	8/28/2008	FD. 5/8" I. REBAR 0.2 FT. ABOVE SURFACE GOOD COND. DOUG. CO. RW STA. 15+79.74 PC 35 LT	CO. RD. 125 SHT 5
1217	536817.392	4125160.054			1291+81.88	584.38	8/28/2008	FD. 5/8" I. REBAR 0.5 FT. ABOVE SURFACE POOR COND. BENT EASTERLY TIED WHERE ENTERS GROUND. DOUG. CO. RW STA. 15+79.74 PC 30 RT	CO. RD. 125 SHT 5



REGISTERED PROFESSIONAL LAND SURVEYOR
 Marshall R. Wagstaff
 OREGON
 JANUARY 9, 2001
 MARSHALL R. WAGSTAFF
 49476LS
 EXPIRES 06/30/10

SI FEET
OREGON DEPARTMENT OF TRANSPORTATION
 HORIZONTAL CONTROL, RECOVERY AND RETRACEMENT MAP
 OR42: HOOVER HILL - LOOKINGGLASS CREEK PAVING
 COOS BAY - ROSEBURG HWY. NO. 35, OR42, M.P. 68.61-72.52
 DOUGLAS COUNTY
 FILE: 13820RW.DGN
 FOR ODOT REGION 3
 3500 NW. STEWART PKWY.
 ROSEBURG, OR. 97470
 JULY 30, 2009
 SCALE: 1" = 100'
 SHEET 6 OF 14

ST. HWY 42 - Q14 F