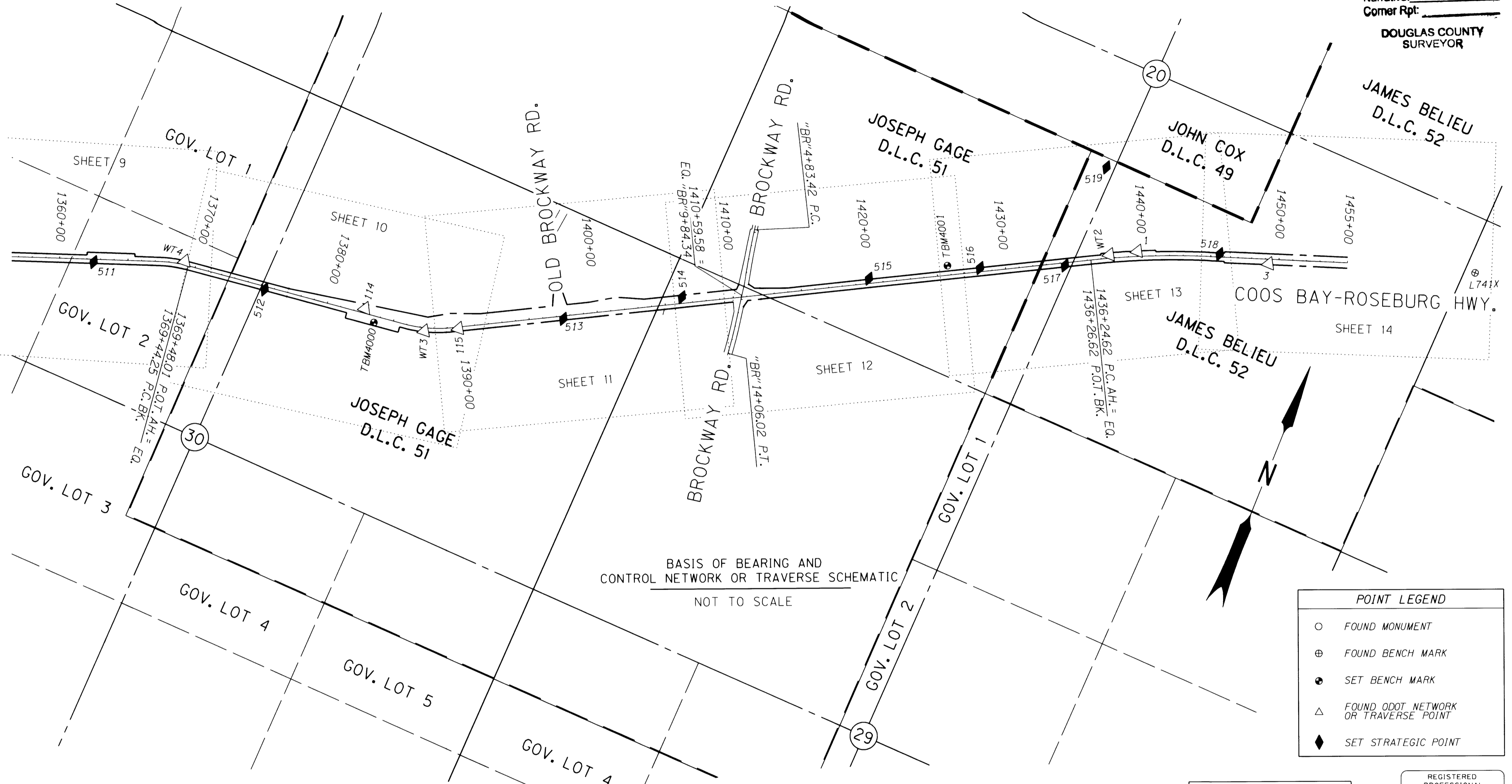


SEC. 20, 29, & 30 T.28S., R.6W., W.M.

FILED  
 Date: 8-3-2009 By: JC  
 This survey consists of:  
 Map: ST HWY 042-014 B  
 Narrative:  
 Corner Rpt:  
 DOUGLAS COUNTY SURVEYOR



BASIS OF BEARING AND CONTROL NETWORK OR TRAVERSE SCHEMATIC  
 NOT TO SCALE

POINT LEGEND	
○	FOUND MONUMENT
⊕	FOUND BENCH MARK
●	SET BENCH MARK
△	FOUND ODOT NETWORK OR TRAVERSE POINT
◆	SET STRATEGIC POINT

CONTROL MONUMENTS

PT. ID.	NORTHING	EASTING	ELEV.	STATION	OFFSET (- IS LEFT)	DATE	DESCRIPTION	REFERENCE
1	542163.527	4138948.183	532.25	1439+67.92	-37.53	8/28/2006	FD. 1 1/2" BRASS CAP STAMPED "ODOT CONTROL 1" FLUSH W/ SURFACE STABILIZED IN CONCRETE GOOD COND. FD. FROM PREVIOUS ODOT PROJECT.	ST. HWY. 42-009
3	542439.208	4139869.965	517.94	1449+26.18	33.43	8/24/2006	FD. 1 1/2" BRASS CAP STAMPED "ODOT CONTROL 3" FLUSH W/ SURFACE STABILIZED IN CONCRETE GOOD COND. FD. FROM PREVIOUS ODOT PROJECT.	ST. HWY. 42-009
114	539661.295	4133872.587	560.98	1382+75.56	-33.46	8/24/2006	FD. 1 1/2" ALUM. CAP STAMPED "ODOT HORIZ CONTROL 114" 0.20 FT. BELOW SURFACE GOOD COND.	ST. HWY. 42-001
115	539782.615	4134560.958	552.97	1389+80.47	11.71	8/24/2006	FD. RAILROAD SPIKE IN A.C. FLUSH W/ SURFACE GOOD COND.	ST. HWY. 42-001
512	539516.204	4133140.359	569.19	1375+31.15	21.82	8/24/2006	SET 5/8" X 30" I. REBAR W/ 1 1/2" BRASS CAP STAMPED "ODOT CONTROL 512" 0.30 FT. BELOW SURFACE.	
513	540135.760	4135242.419	544.91	1397+47.95	20.39	8/24/2006	SET 5/8" X 30" I. REBAR W/ 1 1/2" BRASS CAP STAMPED "ODOT CONTROL 513" FLUSH W/ CONCRETE SURFACE.	
514	540607.196	4135987.659	532.67	1406+27.34	-45.35	8/24/2006	SET 5/8" X 30" I. REBAR W/ 1 1/2" BRASS CAP STAMPED "ODOT CONTROL 514" 0.10 FT. BELOW SURFACE.	
515	541243.523	4137204.093	537.03	1420+00.11	-35.11	8/24/2006	SET 5/8" X 30" I. REBAR W/ 1 1/2" BRASS CAP STAMPED "ODOT CONTROL 515" 0.10 FT. BELOW SURFACE.	
516	541620.457	4137926.455	541.78	1428+14.88	-28.20	8/24/2006	SET 5/8" X 30" I. REBAR W/ 1 1/2" BRASS CAP STAMPED "ODOT CONTROL 516" FLUSH W/ SURFACE.	
517	541869.067	4138495.420	534.12	1434+33.92	19.86	8/24/2006	SET 5/8" X 30" I. REBAR W/ 1 1/2" BRASS CAP STAMPED "ODOT CONTROL 517" 0.10 FT. BELOW SURFACE.	
518	542370.398	4139510.121	520.57	1445+64.03	-22.00	8/24/2006	SET 5/8" X 30" I. REBAR W/ 1 1/2" BRASS CAP STAMPED "ODOT CONTROL 518" 0.10 FT. BELOW SURFACE OF A.C. SIDEWALK.	
L741X	542945.675	4141292.337	517.84			8/28/2006	FD. 1/2" STAINLESS STEEL ROD HAD THROUGH A 5" DIA. LOGO CAP COLLAR STAMPED "L741X 1987" 1.4 FT. BELOW SURFACE IN GRAVEL SIDEWALK BEHIND CONCRETE CURB ROD IN GOOD COND. LOGO CAP BROKEN	NGS
TBM4000	539591.358	4133970.885	560.56	1383+64.66	47.87	8/24/2006	SET 1" BRASS PLUG STAMPED "ODOT CONTROL TBM 4000" FLUSH W/ CONCRETE AT NE CORNER OF WEIGH SCALE BUILDING.	
TBM4001	541546.538	4137699.909	542.88	1425+80.18	-69.46	8/24/2006	SET 1" BRASS PLUG STAMPED "ODOT CONTROL TBM 4001" FLUSH IN CONCRETE CURB AT THE WESTERLY EXT OF DOUGLAS HIGH SCHOOL.	
WT2	542063.356	4138767.620	534.40	1437+62.91	-25.33	8/24/2006	FD. 1 1/2" ALUM. CAP STAMPED "OREGON STATE HWY. DIV. WT 2 1991" FLUSH W/ CONCRETE SURFACE GOOD COND.	M119-63
WT3	539672.216	4134335.787	556.94	1387+33.44	24.36	8/24/2006	FD. 1 1/2" ALUM. CAP STAMPED "OREGON STATE HWY. DIV. WT 3 1991" FLUSH W/ SURFACE IN GOOD COND.	M119-63
DELI	545861.872	4133118.976				8/24/2006	FD. 3" BRASS DISK IN BEDROCK ON SOUTH SIDE OF LOOKINGGLASS RD. AT JUNCTION WITH CEDAR TREE DRIVE STAMPED "DOUGLAS COUNTY SURVEYORS OFFICE DELI 1985" 0.1 FT. ABOVE SURFACE GOOD CONDITION. NOT SHOWN	DCSO 1985

SEE LINE LEGEND ON SHEET 3

REGISTERED PROFESSIONAL LAND SURVEYOR  
 Marshall R. Wagstaff  
 OREGON JANUARY 8, 2001  
 MARSHALL R. WAGSTAFF  
 49476LS  
 EXPIRES 06/30/10

SI FEET OREGON DEPARTMENT OF TRANSPORTATION  
 HORIZONTAL CONTROL, RECOVERY AND RETRACEMENT MAP  
 OR42: HOOVER HILL - LOOKINGGLASS CREEK PAVING  
 COOS BAY - ROSEBURG HWY. NO. 35, OR42, M.P. 68.61-72.52  
 DOUGLAS COUNTY  
 FILE: 13820RW.DGN  
 FOR ODOT REGION 3 JULY 30, 2009  
 3500 NW. STEWART PKWY.  
 ROSEBURG, OR. 97470  
 SHEET 2 OF 14

ST. HWY 42 - 014 B