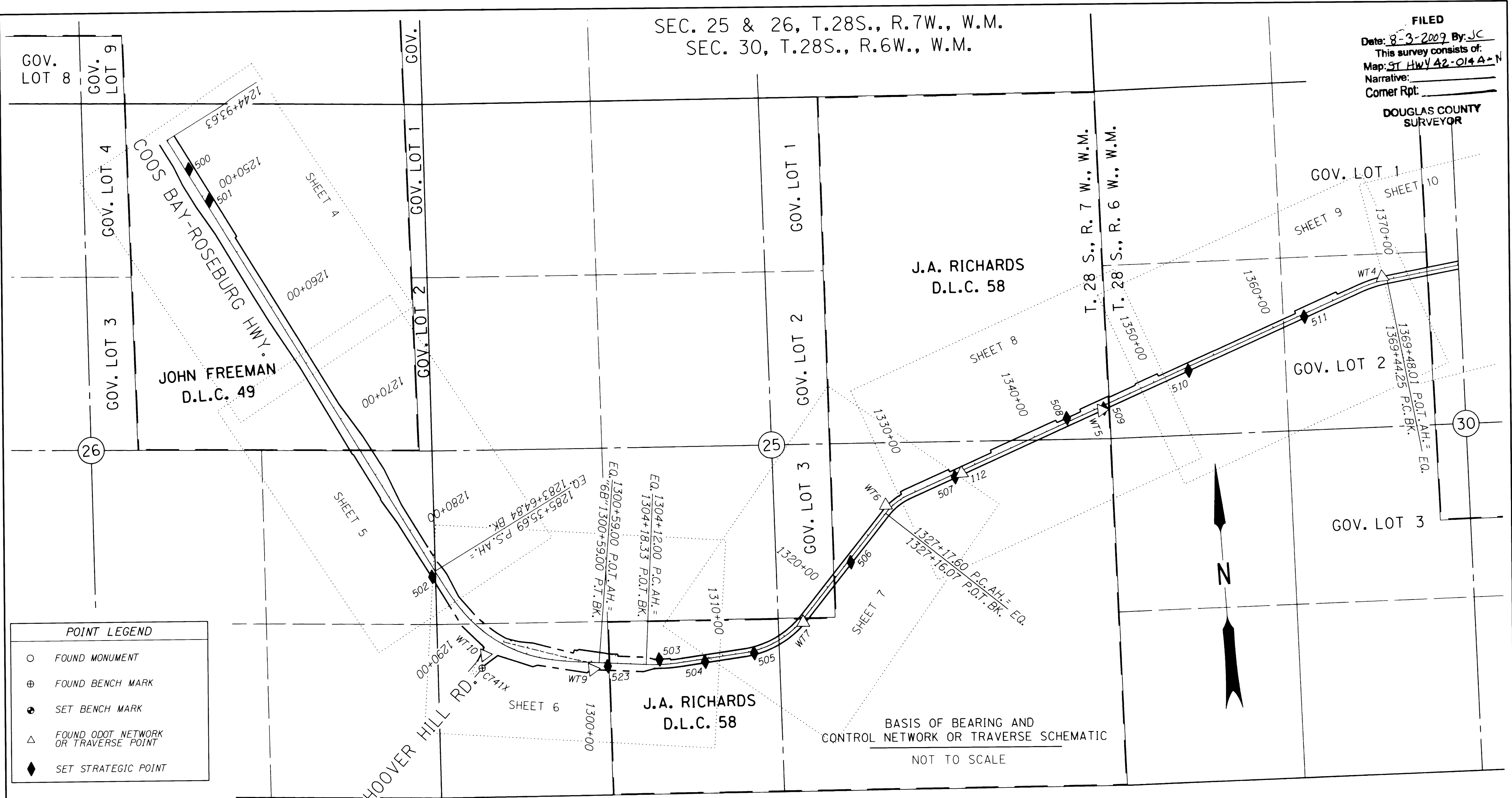


SEC. 25 & 26, T.28S., R.7W., W.M.
SEC. 30, T.28S., R.6W., W.M.

FILED
Date: 8-3-2009 By: JC
This survey consists of:
Map: ST HWY 42-014A-N
Narrative:
Corner Rpt:

DOUGLAS COUNTY
SURVEYOR



POINT LEGEND

- FOUND MONUMENT
- ⊕ FOUND BENCH MARK
- SET BENCH MARK
- △ FOUND ODOT NETWORK OR TRAVERSE POINT
- ◆ SET STRATEGIC POINT

CONTROL MONUMENTS

PT. ID.	LDP NORTHING	LDP EASTING	ELEV.	STATION	OFFSET (- IS LEFT)	DATE	DESCRIPTION	REFERENCE
112	538253.544	4129208.924		1333+79.36	19.28	8/29/2006	FD. 1/2" SQUARE I. ROD W/ 1 1/2" ALUM. CAP STAMPED "ODOT HORIZ CONTROL 112" 0.70 FT. BELOW SURFACE SLIGHTLY BENT TO WEST FAIR COND.	ST. HWY. 42-001
500	541039.067	4123522.743		1247+72.10	-25.86	8/29/2006	SET 5/8" X 30" I. REBAR W/ 1 1/2" BRASS CAP STAMPED "ODOT CONTROL 500" 0.10 FT. BELOW SURFACE.	
501	540789.865	4123658.806		1250+55.94	-32.54	8/29/2006	SET 5/8" X 30" I. REBAR W/ 1 1/2" BRASS CAP STAMPED "ODOT CONTROL 501" 0.10 FT. BELOW SURFACE.	
502	537792.877	4125122.221	754.54	1285+61.16	40.74	8/29/2006	SET 5/8" X 30" I. REBAR W/ 1 1/2" BRASS CAP STAMPED "ODOT CONTROL 502" 0.10 FT. BELOW SURFACE.	
503	537028.850	4126798.399	727.26	1305+14.27	-38.51	8/24/2006	SET 5/8" X 30" I. REBAR W/ 1 1/2" BRASS CAP STAMPED "ODOT CONTROL 503" FLUSH W/ SURFACE.	
504	536983.253	4127144.686	710.54	1308+61.29	22.21	8/24/2006	SET 5/8" X 30" I. REBAR W/ 1 1/2" BRASS CAP STAMPED "ODOT CONTROL 504" 0.2 FT. BELOW SURFACE.	
505	537018.930	4127522.458	703.02	1312+39.03	17.34	8/24/2006	SET 5/8" X 30" I. REBAR W/ 1 1/2" BRASS CAP STAMPED "ODOT CONTROL 505" 0.3 FT. BELOW SURFACE.	
506	537647.568	4128311.356	666.73	1322+58.11	20.10	8/29/2006	SET 5/8" X 30" I. REBAR W/ 1 1/2" BRASS CAP STAMPED "ODOT CONTROL 506" 0.2 FT. BELOW SURFACE.	
507	538229.363	4129155.708	640.65	1333+21.08	23.80	8/24/2006	SET 5/8" X 30" I. REBAR W/ 1 1/2" BRASS CAP STAMPED "ODOT CONTROL 507" 0.5 FT. BELOW SURFACE.	
508	538607.649	4130041.207	632.12	1342+82.56	-28.80	8/24/2006	SET 5/8" X 30" I. REBAR W/ 1 1/2" BRASS CAP STAMPED "ODOT CONTROL 508" 0.10 FT. BELOW SURFACE.	
509	538658.250	4130328.369	626.20	1345+69.71	21.87	8/24/2006	SET 1" BRASS PLUG STAMPED "ODOT CONTROL 509" FLUSH W/ CONCRETE AROUND TRAFFIC SIGNAL JCT. BOX FOR TRAFFIC COUNTER.	
510	538894.029	4130994.276	603.93	1352+76.10	28.08	8/24/2006	SET 5/8" X 30" I. REBAR W/ 1 1/2" BRASS CAP STAMPED "ODOT CONTROL 510" 0.10 FT. BELOW SURFACE.	
511	539234.592	4131907.080	588.31	1362+50.33	20.27	8/24/2006	SET 5/8" X 30" I. REBAR W/ 1 1/2" BRASS CAP STAMPED "ODOT CONTROL 511" 0.30 FT. BELOW SURFACE.	
C741X	537070.696	4125445.871	764.33			8/28/2006	FD. 1/2" STAINLESS STEEL ROD HAD THROUGH A 5" DIA. LOGO CAP COLLAR STAMPED "C741X 1987" 0.10 FT. BELOW SURFACE IN GOOD COND.	NGS
WT4	539488.466	4132523.957	578.20	1369+13.01	-25.86	8/24/2006	FD. 1 1/2" ALUM. CAP STAMPED "OREGON STATE HWY. DIV. WT 4 1991" 0.10 FT. BELOW SURFACE IN GOOD COND.	M119-63
WT5	538647.465	4130310.652	625.80	1345+49.37	25.95	8/24/2006	FD. 1 1/2" ALUM. CAP STAMPED "OREGON STATE HWY. DIV. WT 5 1991" 0.20 FT. BELOW SURFACE IN GOOD COND.	M119-63
WT6	538057.199	4128612.005	653.94	1327+61.19	-38.37	8/24/2006	FD. 1 1/2" ALUM. CAP STAMPED "OREGON STATE HWY. DIV. WT 6 1991" FLUSH W/ SURFACE IN GOOD COND.	M119-63
WT7	537220.075	4127913.468	687.79	1316+74.92	17.79	8/24/2006	FD. RAILROAD SPIKE IN A.C. ACCESS FLUSH W/ SURFACE GOOD COND.	M119-63
WT9	536994.333	4126285.915	738.95	1300+12.80	51.97	8/29/2006	FD. 1 1/2" ALUM. CAP STAMPED "OREGON STATE HWY. DIV. WT 9 1991" FLUSH W/ SURFACE IN GOOD COND.	M119-63
WT10	537168.664	4125475.696	762.81	1292+32.94	140.20	8/28/2006	FD. 1 1/2" ALUM. CAP STAMPED "OREGON STATE HWY. DIV. WT 10 1991" FLUSH W/ A.C. SURFACE AT EDGE OF PAVEMENT IN GOOD COND.	M119-63

SEE LINE LEGEND ON SHEET 3

REGISTERED PROFESSIONAL LAND SURVEYOR
Marshall R. Wagstaff
OREGON
JANUARY 9, 2001
MARSHALL R. WAGSTAFF
49476LS
EXPIRES 06/30/10

SI FEET
OREGON DEPARTMENT OF TRANSPORTATION
HORIZONTAL CONTROL, RECOVERY AND RETRACEMENT MAP
OR42: HOOVER HILL - LOOKINGGLASS CREEK PAVING
COOS BAY - ROSEBURG HWY. NO. 35, OR42, M.P. 68.61-72.52
DOUGLAS COUNTY
FILE: 13820RW.DGN
FOR ODOT REGION 3
3500 NW. STEWART PKWY.
ROSEBURG, OR. 97470
JULY 30, 2009
SHEET 1 OF 14