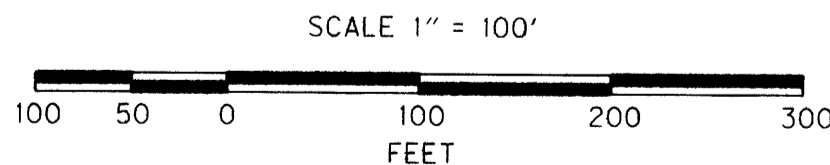
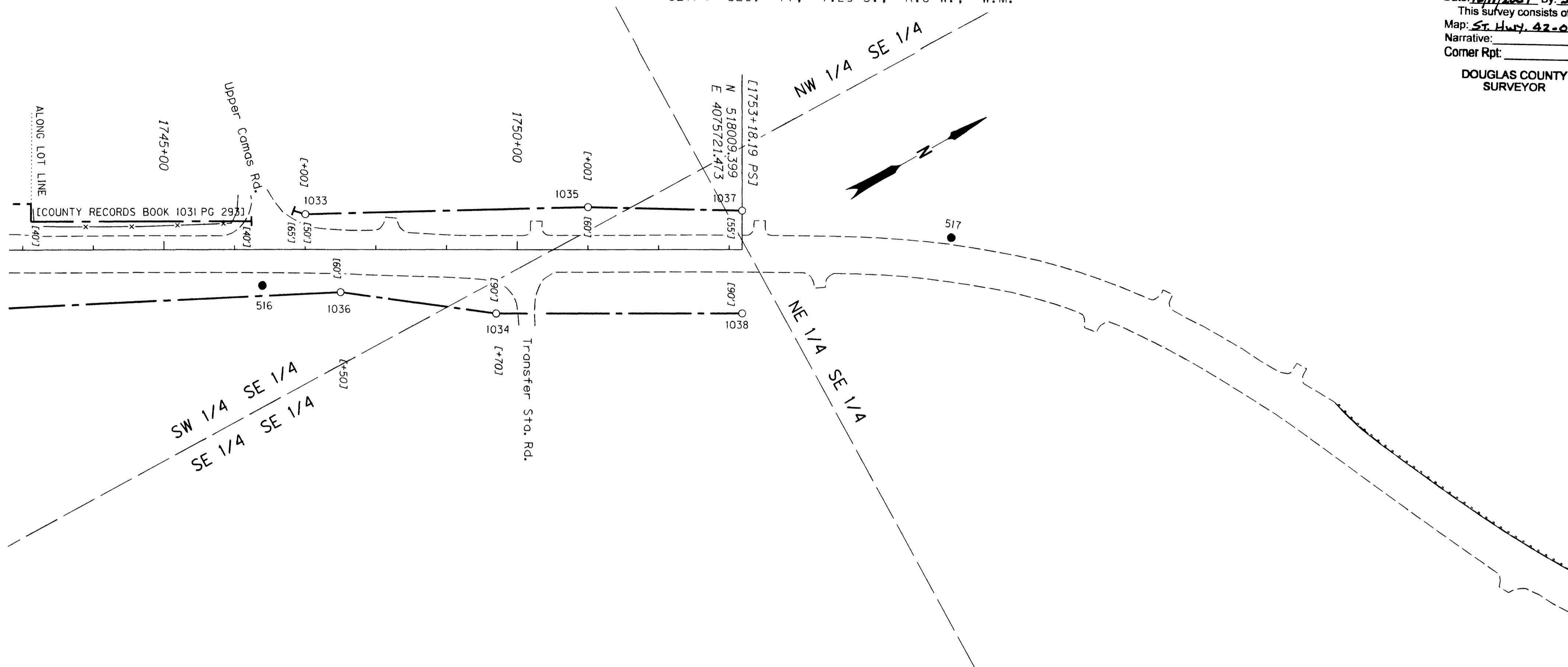


SE 1/4 SEC. 17, T.29 S., R.8 W., W.M.

FILED
 Date: 12/11/2007 By: JP
 This survey consists of:
 Map: St. Hwy. 42-013 J
 Narrative: _____
 Corner Rpt: _____
 DOUGLAS COUNTY
 SURVEYOR



RECOVERED MONUMENT LIST NOTE: OFFSETS WITH A - (MINUS) ARE LEFT, WITHOUT IS FOR THE RIGHT

PT. NO.	LDP NORTHING	LDP EASTING	ELEV	STATION	OFFSET	DATE	DESCRIPTION	REFERENCE
1033	517499.66	4075368.28		1747+00.06	-49.96	5/23/2006	FD. 5/8" IRON ROD WITH 1 1/4" PLASTIC CAP STAMPED "OSHD" 0.3 FT. BELOW SURFACE IN GOOD CONDITION R/W STA. 1747+00 50 FT. LT. PADDLE BOARD NEARBY MARKED "SHRW"	ODOT MAP 1A-15-45
1034	517663.03	4075624.71		1749+70.00	89.97	5/23/2006	FD. 5/8" IRON REBAR WITH REMAINS OF PLASTIC CAP FLUSH WITH SURFACE IN GOOD CONDITION R/W STA. 1749+70 90 FT. RT. STINGER NEARBY	ODOT MAP 1A-15-45
1035	517850.74	4075560.14		1751+00.02	-60.02	5/23/2006	FD. 5/8" IRON ROD WITH 1 1/4" PLASTIC CAP STAMPED "OSHD" FLUSH WITH SURFACE IN GOOD CONDITION R/W STA. 1751+00 60 FT. LT. PADDLE BOARD NEARBY MARKED "SHRW"	ODOT MAP 1A-15-45
1036	517487.70	4075488.43		1747+49.96	59.96	5/23/2006	FD. 5/8" IRON ROD WITH 1 1/4" PLASTIC CAP STAMPED "OSHD" 0.3 FT. BELOW SURFACE IN GOOD CONDITION PADDLE BOARD NEARBY MARKED "SHRW 1747+50 POT 60"	ODOT MAP 1A-15-45
1037	518036.95	4075673.91		1753+18.18	-54.97	5/23/2006	FD. 5/8" IRON REBAR WITH 1 1/4" PLASTIC CAP STAMPED "OSHD" 0.2 FT. BELOW SURFACE IN GOOD CONDITION R/W PS STA. 1753+18.20 55 FT. LT.	ODOT MAP 1A-15-45
1038	517964.31	4075799.31		1753+18.18	89.96	5/23/2006	FD. 5/8" IRON ROD WITH 1 1/4" PLASTIC CAP STAMPED "OSHD" FLUSH WITH SURFACE IN GOOD CONDITION R/W PS STA. 1753+18.20 90 FT. RT. PADDLE BOARD NEARBY MARKED "SHRW"	ODOT MAP 1A-15-45

SEE CONTROL POINT TABLE ON SHEET 1 & 2

SEE LINE & POINT LEGEND ON SHEET 1

REGISTERED PROFESSIONAL LAND SURVEYOR
James M. Stanley
 OREGON
 JULY 11, 2000
 JAMES M. STANLEY
 49863LS
 EXPIRES 06/30/08

SI FEET
OREGON DEPARTMENT OF TRANSPORTATION
 HORIZONTAL CONTROL, RECOVERY AND RETACEMENT MAP
 OR42: HARD CASH LN. - QUIET MOUNTAIN RD. RESURFACING
 COOS BAY - ROSEBURG HWY
 DOUGLAS COUNTY
 FILE: 13791RW.DGN

FOR ODOT REGION 3
 3500 NW. STEWART PKWY.
 ROSEBURG, OR. 97470

DEC. 7, 2007
 SCALE: 1" = 100'
 SHEET 9 OF 11

ST. HWY. 42-013 I