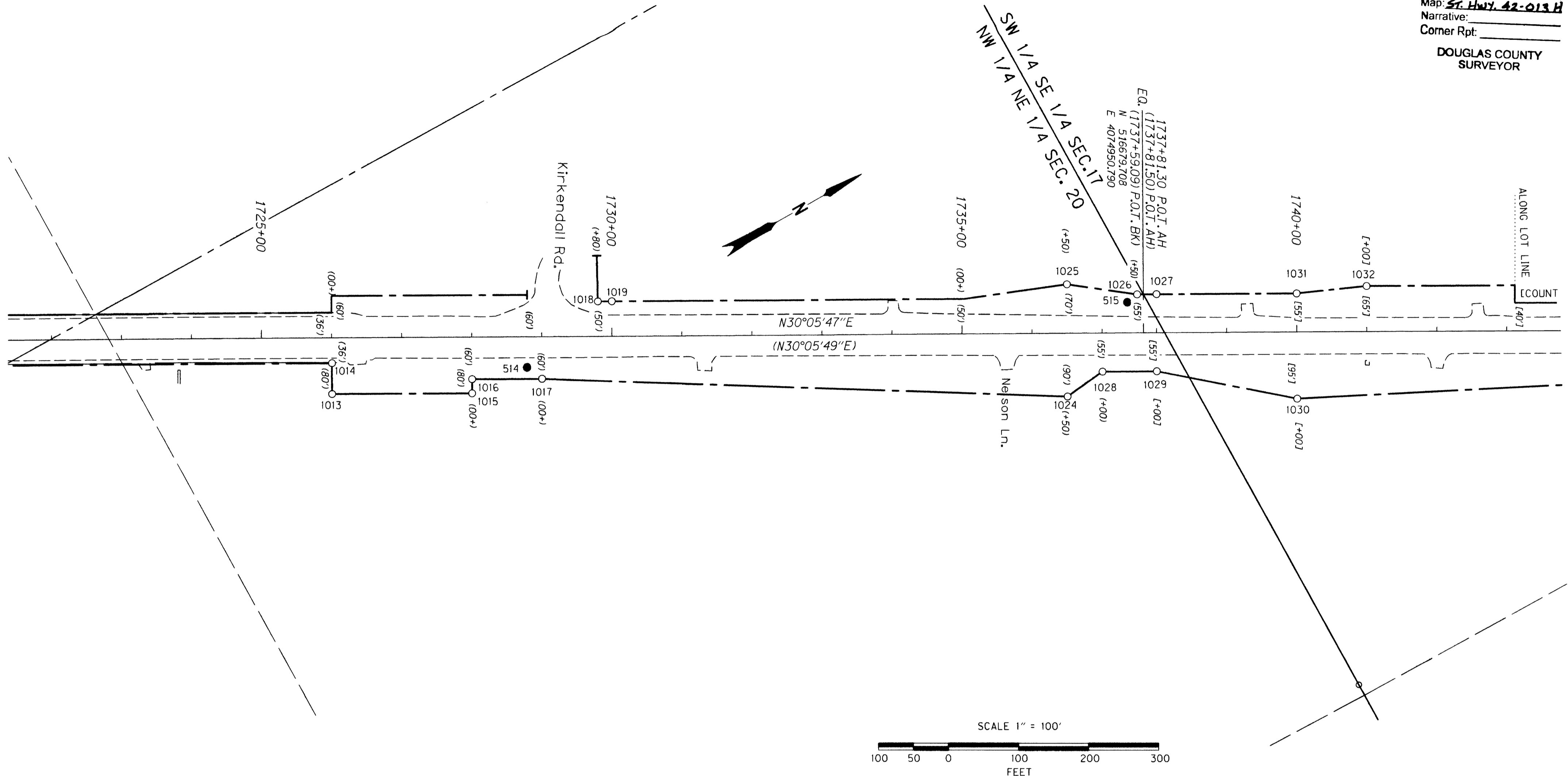


SEC. 17 & 20, T.29 S., R.8 W., W.M.

FILED
 Date: 12/11/2007 By: JIP
 This survey consists of:
 Map: ST. HWY. 42-013 H
 Narrative:
 Corner Rpt:
 DOUGLAS COUNTY
 SURVEYOR



RECOVERED MONUMENT LIST NOTE: OFFSETS WITH A - (MINUS) ARE LEFT, WITHOUT IS FOR THE RIGHT BENCHMARKS P76 AND N741X (NAVD 88 ELEV.) WERE RECOVERED AND USED TO ESTABLISH ALL ELEVATIONS.

PT. NO.	LDP NORTHING	LDP EASTING	ELEV	STATION	OFFSET	DATE	DESCRIPTION	REFERENCE
1013	515636.95	4074438.87		1726+00.21	79.99	5/23/2006	FD. 5/8" IRON ROD WITH 1 1/4" PLASTIC CAP STAMPED "OSHD RW" 0.1 FT. ABOVE SURFACE IN GOOD CONDITION PADDLE BOARD NEARBY MARKED "SHRW 1726+00 POT 80 RT"	ODOT MAP 98-30-17
1014	515658.00	4074400.82		1726+00.21	36.02	5/23/2006	FD. 5/8" IRON ROD WITH 1 1/4" PLASTIC CAP STAMPED "OSHD RW" 0.2 FT. BELOW SURFACE IN GOOD CONDITION R/W STA. 1726+00 36 FT. RT. STINGER NEARBY	ODOT MAP 98-30-17
1015	515809.87	4074539.11		1728+00.08	80.01	5/22/2006	FD. 5/8" IRON ROD WITH 1 1/4" PLASTIC CAP STAMPED "OSHD RW" 0.1 FT. ABOVE SURFACE IN GOOD CONDITION PADDLE BOARD NEARBY MARKED "SHRW 1728+00 POT 80 RT"	ODOT MAP 98-30-17
1016	515820.02	4074521.85		1728+00.21	59.98	5/22/2006	FD. 5/8" IRON ROD WITH 1 1/4" PLASTIC CAP STAMPED "OSHD" 0.1 FT. ABOVE SURFACE IN GOOD CONDITION R/W STA. 1728+00 60 FT. RT. STINGER NEARBY	ODOT MAP 98-30-17
1017	515906.51	4074571.91		1729+00.14	59.92	5/23/2006	FD. 5/8" IRON ROD WITH 1 1/4" PLASTIC CAP STAMPED "OSHD RW" 0.2 FT. BELOW SURFACE IN GOOD CONDITION R/W STA. 1729+00 POT 60 FT. RT. PADDLE BOARD NEARBY MARKED "SHRW"	ODOT MAP 98-30-17
1018	516030.88	4074517.02		1729+80.22	-49.93	5/22/2006	FD. 5/8" IRON REBAR WITH 1 1/4" PLASTIC CAP STAMPED "OSHD RW" FLUSH WITH SURFACE IN GOOD CONDITION CAP IN POOR CONDITION R/W STA. 1729+80 50' LT. PADDLE BOARD NEARBY MARKED "SHRW"	ODOT MAP 98-30-17
1019	516048.16	4074527.01		1730+00.18	-49.95	5/23/2006	FD. 5/8" IRON ROD WITH 1 1/4" PLASTIC CAP STAMPED "OSHD" FLUSH WITH SURFACE IN GOOD CONDITION CAP IN POOR CONDITION R/W STA. 1730+00 60 FT. LT. PADDLE BOARD NEARBY MARKED "SHRW"	ODOT MAP 98-30-17
1020	513806.85	4073326.99		1704+59.42	35.99	5/23/2006	FD. 5/8" IRON ROD WITH 1 1/4" PLASTIC CAP STAMPED "LANG SURVEYING" 0.3 FT. BELOW SURFACE IN GOOD CONDITION	M 117-45
1021	513888.41	4073373.49		1705+51.43	36.06	5/23/2006	FD. 5/8" IRON REBAR 0.3 FT. BELOW SURFACE IN GOOD CONDITION	M 117-45
1024	516540.43	4074873.99		1736+50.22	89.91	5/23/2006	FD. 5/8" IRON ROD WITH 1 1/4" PLASTIC CAP STAMPED "OSHD" 0.2 FT. BELOW SURFACE IN GOOD CONDITION PADDLE BOARD NEARBY MARKED "SHRW 1736+50 POT 90 RT"	ODOT MAP 98-30-17
1025	516620.59	4074835.63		1736+50.19	-69.99	5/22/2006	FD. 5/8" IRON ROD WITH 1 1/4" PLASTIC CAP STAMPED "OSHD" FLUSH WITH SURFACE IN GOOD CONDITION PADDLE BOARD NEARBY MARKED "SHRW 1736+50 POT 70 LT"	ODOT MAP 98-30-17
1026	516699.57	4074898.71		1737+50.16	-55.02	5/22/2006	FD. 5/8" IRON ROD WITH 1 1/4" PLASTIC CAP STAMPED "OSHD" 0.1 FT. BELOW SURFACE IN GOOD CONDITION CAP IN POOR CONDITION PADDLE BOARD NEARBY MARKED "SHRW 1737+50 POT 55 LT"	ODOT MAP 98-30-17
1027	516723.62	4074912.50		1738+00.09	-55.15	5/30/2005	FD. 5/8" IRON ROD WITH REMAINS OF A 1 1/4" PLASTIC CAP 0.1 FT. ABOVE SURFACE IN FAIR CONDITION AND BENT SLIGHTLY NORTHEASTERLY CAP IN POOR CONDITION R/W STA. 1738+00 55' LT. STINGER NEARBY	ODOT MAP 98-30-17
1028	516601.22	4074968.87		1737+00.25	55.00	5/23/2006	FD. 5/8" IRON REBAR WITH 1 1/4" PLASTIC CAP STAMPED "OSHD RW" 0.2 FT. BELOW SURFACE IN GOOD CONDITION R/W STA. 1755+00 55 FT. RT. STINGER NEARBY	ODOT MAP 98-30-17
1029	516668.33	4075007.68	1176.46	1737+99.98	54.93	5/23/2006	FD. 5/8" IRON REBAR WITH 1 1/4" PLASTIC CAP STAMPED "OSHD RW" 0.1 FT. BELOW SURFACE IN GOOD CONDITION R/W STA. 1738+00 55 FT. RT. STINGER NEARBY	ODOT MAP 98-30-17
1030	516821.23	4075142.67		1739+99.96	95.04	5/30/2005	FD. 5/8" IRON ROD WITH 1 1/4" PLASTIC CAP STAMPED "OSHD" 0.1 FT. BELOW SURFACE IN GOOD CONDITION PADDLE BOARD NEARBY MARKED "SHRW 1740+00 POT 95 RT"	ODOT MAP 98-30-17
1031	516898.49	4075012.90		1740+00.00	-54.97	5/23/2006	FD. 5/8" IRON REBAR WITH 1 1/4" PLASTIC CAP STAMPED "OSHD" 0.1 FT. BELOW SURFACE IN GOOD CONDITION PADDLE BOARD NEARBY MARKED "SHRW 1740+00 POT 55 LT"	ODOT MAP 98-30-17
1032	516988.05	4075054.39		1741+00.02	-64.99	5/23/2006	FD. 5/8" IRON REBAR WITH 1 1/4" PLASTIC CAP STAMPED "OSHD" 0.1 FT. BELOW SURFACE IN GOOD CONDITION PADDLE BOARD NEARBY MARKED "SHRW 1741+00 POT 65 LT"	1A-15-45

SEE CONTROL POINT TABLE ON SHEET 1 & 2
 SEE LINE & POINT LEGEND ON SHEET 1

REGISTERED PROFESSIONAL LAND SURVEYOR
James M. Stanley
 OREGON
 JULY 11, 2000
 JAMES M. STANLEY
 49863LS
 EXPIRES 06/30/08

SI FEET OREGON DEPARTMENT OF TRANSPORTATION
 HORIZONTAL CONTROL, RECOVERY AND RETRACEMENT MAP
 OR42: HARD CASH LN. - QUIET MOUNTAIN RD. RESURFACING
 COOS BAY - ROSEBURG HWY
 DOUGLAS COUNTY
 FILE: 13791RW.DGN
 FOR ODOT REGION 3
 3500 NW. STEWART PKWY.
 ROSEBURG, OR. 97470
 DEC. 7, 2007
 SCALE: 1" = 100'
 SHEET 8 OF 11

ST. HWY. 42-013 H