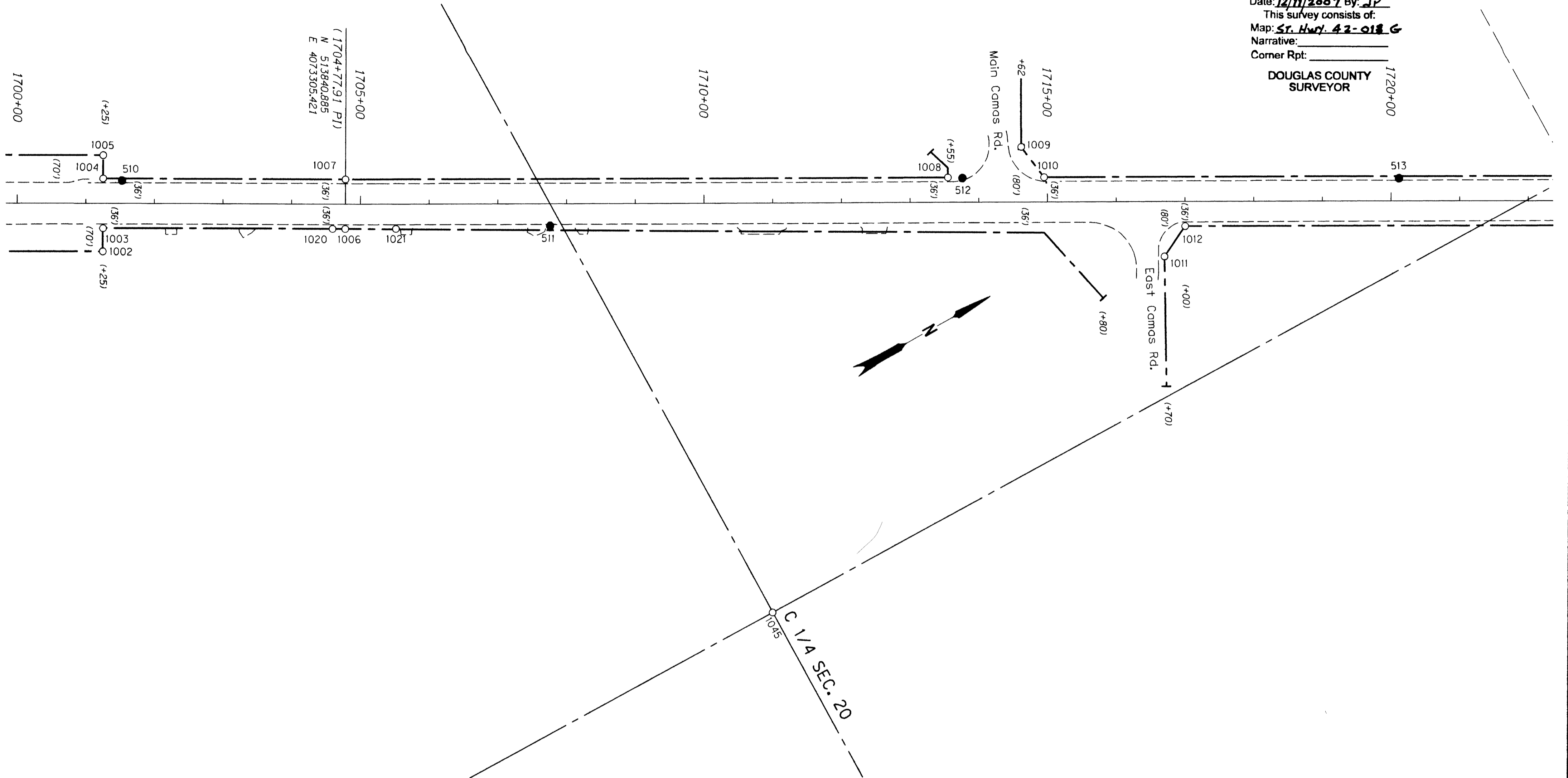


SEC. 20, T.29 S., R.8 W., W.M.

FILED
 Date: 12/11/2007 By: JP
 This survey consists of:
 Map: St. Hwy. 42-013 G
 Narrative: _____
 Corner Rpt: _____
 DOUGLAS COUNTY
 SURVEYOR



RECOVERED MONUMENT LIST NOTE: OFFSETS WITH A - (MINUS) ARE LEFT, WITHOUT IS FOR THE RIGHT BENCHMARKS P76 AND N741X (NAVD 88 ELEV.) WERE RECOVERED AND USED TO ESTABLISH ALL ELEVATIONS.

PT. NO.	LDP NORTHING	LDP EASTING	ELEV	STATION	OFFSET	DATE	DESCRIPTION	REFERENCE
1002	513501.52	4073186.14		1701+25.08	70.06	5/23/2006	FD. 5/8" IRON ROD WITH 1 1/4" PLASTIC CAP STAMPED "OSHD" 0.1 FT. ABOVE SURFACE IN GOOD CONDN R/W STA. 1701+25 70 FT. RT. PADDLE BOARD NEARBY MARKED "SHRW POT 70 RT."	ODOT MAP 98-30-17
1003	513518.81	4073157.19		1701+25.23	36.34	5/22/2006	FD. 5/8" IRON ROD WITH 1 1/4" PLASTIC CAP STAMPED "OSHD RW" 0.1 FT. BELOW SURFACE IN GOOD CONDITION PLASTIC CAP IN POOR CONDITION R/W STA. 1701+25 36 FT. RT. STINGER NEARBY	ODOT MAP 98-30-17
1004	513555.50	4073094.83		1701+25.07	-36.01	5/23/2006	FD. 5/8" IRON ROD WITH 1 1/4" PLASTIC CAP STAMPED "OSHD RW" 0.1 FT. ABOVE SURFACE IN GOOD CONDITION R/W STA. 1701+25 36 FT. LT. PADDLE BOARD NEARBY MARKED "SHRW 36 LT"	ODOT MAP 98-30-17
1005	513572.71	4073065.66		1701+25.03	-69.88	5/23/2006	FD. 5/8" IRON ROD WITH 1 1/4" PLASTIC CAP STAMPED "OREGON STATE HIGHWAY DIV." FLUSH WITH SURFACE IN GOOD CONDITION R/W STA. 1701+25 POT 70 FT. LT. PADDLE BOARD NEARBY MARKED "SHRW 70 LT"	ODOT MAP 98-30-17
1006	513822.55	4073336.40	1132.75	1704+77.89	36.00	5/23/2006	FD. 5/8" IRON ROD WITH 1 1/4" PLASTIC CAP STAMPED "OSHD" 0.1 FT. BELOW SURFACE IN GOOD CONDN R/W PI STA. 1704+77.93 36 FT. RT.	ODOT MAP 98-30-17
1007	513859.22	4073274.44		1704+78.24	-36.00	5/23/2006	FD. 5/8" IRON ROD WITH 1 1/4" PLASTIC CAP STAMPED "OSHD RW" 0.1 FT. ABOVE SURFACE IN GOOD CONDN R/W PI STA. 1704+77.93 36 FT. LT.	ODOT MAP 98-30-17
1008	514617.94	4073714.25	1141.88	1713+55.21	-35.95	5/23/2006	FD. 5/8" IRON REBAR WITH 1 1/4" PLASTIC CAP STAMPED "OSHD RW" 0.1 FT. ABOVE SURFACE IN GOOD CONDN R/W STA. 1713+55 36 FT. LT.	ODOT MAP 98-30-17
1009	514732.43	4073729.75		1714+62.04	-79.95	5/30/2005	FD. 5/8" IRON ROD WITH 1 1/4" PLASTIC CAP STAMPED "OSHD" FLUSH WITH SURFACE IN GOOD CONDN R/W STA. 1714+62 80 FT. LT.	ODOT MAP 98-30-17
1010	514739.10	4073784.42		1714+95.23	-35.99	5/23/2006	FD. 5/8" IRON ROD WITH UNREADABLE 1 1/4" PLASTIC CAP 0.1 FT. ABOVE SURFACE IN GOOD CONDN CAP IN POOR CONDN R/W STA. 1714+95 36 FT. LT.	ODOT MAP 98-30-17
1011	514832.19	4073972.55		1716+70.10	80.09	5/30/2005	FD. 5/8" IRON REBAR WITH 1 1/4" PLASTIC CAP STAMPED "OSHD" 0.4 FT. BELOW SURFACE IN GOOD CONDN R/W STA. 1717+70 80 FT. LT.	ODOT MAP 98-30-17
1012	514880.37	4073949.52	1142.09	1717+00.24	36.01	5/30/2005	FD. 5/8" IRON REBAR WITH 1 1/4" PLASTIC CAP STAMPED "OSHD" 0.1 FT. ABOVE SURFACE IN GOOD CONDN R/W STA. 1718+00 36 FT. LT.	ODOT MAP 98-30-17

SEE CONTROL POINT TABLE ON SHEET 1 & 2
 SEE LINE & POINT LEGEND ON SHEET 1

REGISTERED PROFESSIONAL LAND SURVEYOR
James M. Stanley
 OREGON
 JULY 11, 2000
 JAMES M. STANLEY
 49863LS
 EXPIRES 06/30/08

SI FEET OREGON DEPARTMENT OF TRANSPORTATION
 HORIZONTAL CONTROL, RECOVERY AND RETRACEMENT MAP
 OR42: HARD CASH LN. - QUIET MOUNTAIN RD. RESURFACING
 COOS BAY - ROSEBURG HWY
 DOUGLAS COUNTY
 FILE: 13791RW.DGN
 FOR ODOT REGION 3
 3500 NW. STEWART PKWY.
 ROSEBURG, OR. 97470
 DEC. 7, 2007
 SCALE: 1" = 100'
 SHEET 7 OF 11

ST. HWY. 42-013 G