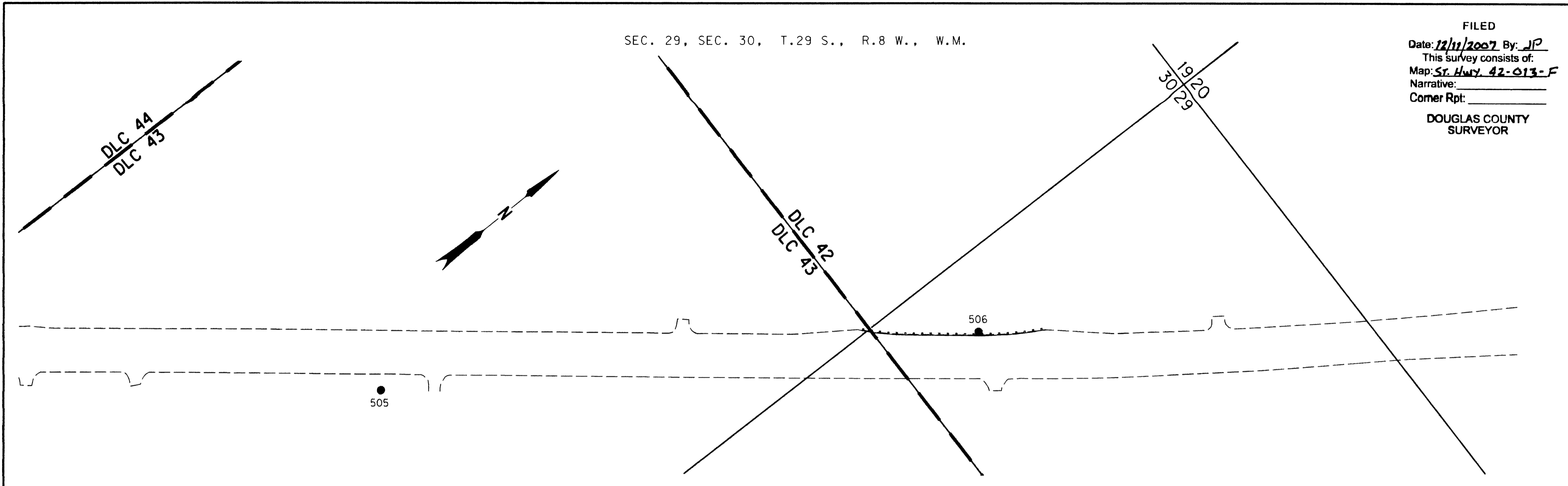
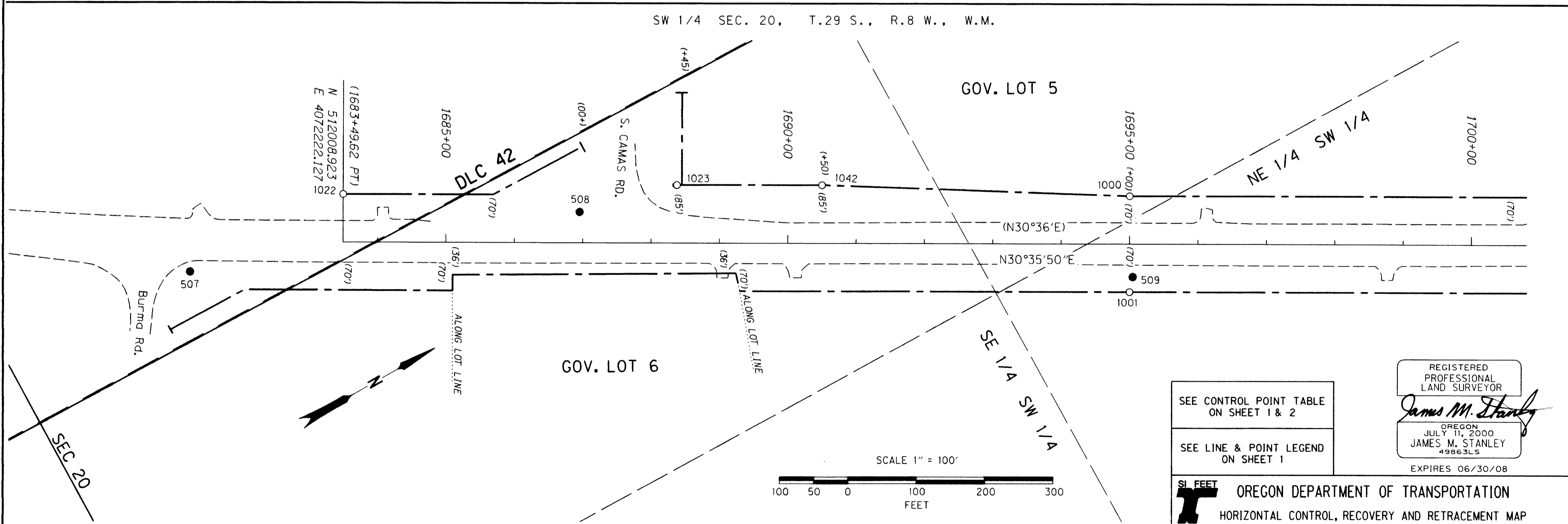


SEC. 29, SEC. 30, T.29 S., R.8 W., W.M.

FILED  
 Date: 12/11/2007 By: JP  
 This survey consists of:  
 Map: St. Hwy. 42-013-F  
 Narrative: \_\_\_\_\_  
 Corner Rpt: \_\_\_\_\_  
 DOUGLAS COUNTY  
 SURVEYOR



SW 1/4 SEC. 20, T.29 S., R.8 W., W.M.



SEE CONTROL POINT TABLE  
ON SHEET 1 & 2

SEE LINE & POINT LEGEND  
ON SHEET 1

REGISTERED  
PROFESSIONAL  
LAND SURVEYOR

*James M. Stanley*

OREGON  
JULY 11, 2000  
JAMES M. STANLEY  
49863LS

EXPIRES 06/30/08

RECOVERED MONUMENT LIST NOTE: OFFSETS WITH A - (MINUS) ARE LEFT, WITHOUT IS FOR THE RIGHT

PT. NO.	LDP NORTHING	LDP EASTING	ELEV.	STATION	OFFSET	DATE	DESCRIPTION	REFERENCE
1000	513034.71	4072747.48		1694+99.99	-89.92	5/22/2006	FD. 5/8" IRON ROD WITH 1 1/4" PLASTIC CAP STAMPED "OSHD" FLUSH WITH SURFACE IN GOOD CONDITION R/W STA. 1695+00 70 FT. LT. STINGER NEARBY	ODOT MAP 98-30-17
1001	512963.45	4072867.96		1694+99.97	70.06	5/22/2006	FD. 5/8" IRON ROD WITH 1 1/4" PLASTIC CAP STAMPED "OSHD RW" 0.1 FT. BELOW SURFACE IN GOOD CONDITION R/W STA. 1695+00 70 FT. RT. PADDLE BOARD NEARBY MARKED "SHRW"	ODOT MAP 98-30-17
1022	512044.55	4072161.87				5/23/2006	FD. 5/8" IRON ROD WITH 1 1/4" PLASTIC CAP STAMPED "OSHD" 0.1 FT. BELOW SURFACE IN GOOD CONDITION PADDLE BOARD NEARBY MARKED "SHRW 1683+49.62 PT 70 LT"	ODOT MAP 98-30-17
1023	512472.05	4072397.68		1688+37.62	-84.62	5/23/2006	FD. 5/8" IRON REBAR WITH 1 1/4" PLASTIC CAP STAMPED "OSHD" 0.3 FT. BELOW SURFACE IN GOOD CONDITION PADDLE BOARD NEARBY MARKED "SHRW 1688+45 POT 85 LT"	ODOT MAP 98-30-17
1042	512654.98	4072505.54		1690+49.98	-84.89	5/22/2006	FD. 5/8" IRON REBAR 0.1 FT. BELOW SURFACE IN GOOD CONDITION R/W STA. 1690+50 85' LT. PADDLE BOARD NEARBY MARKED "SHRW 85 LT"	ODOT MAP 98-30-17

SI FEET

OREGON DEPARTMENT OF TRANSPORTATION

HORIZONTAL CONTROL, RECOVERY AND RETRACEMENT MAP

OR42: HARD CASH LN. - QUIET MOUNTAIN RD. RESURFACING

COOS BAY - ROSEBURG HWY

DOUGLAS COUNTY

FILE: 13791RW.DGN

FOR ODOT REGION 3  
3500 NW. STEWART PKWY.  
ROSEBURG, OR. 97470

DEC. 7, 2007  
SCALE: 1" = 100'  
SHEET 6 OF 11

ST. HWY. 42-013 F