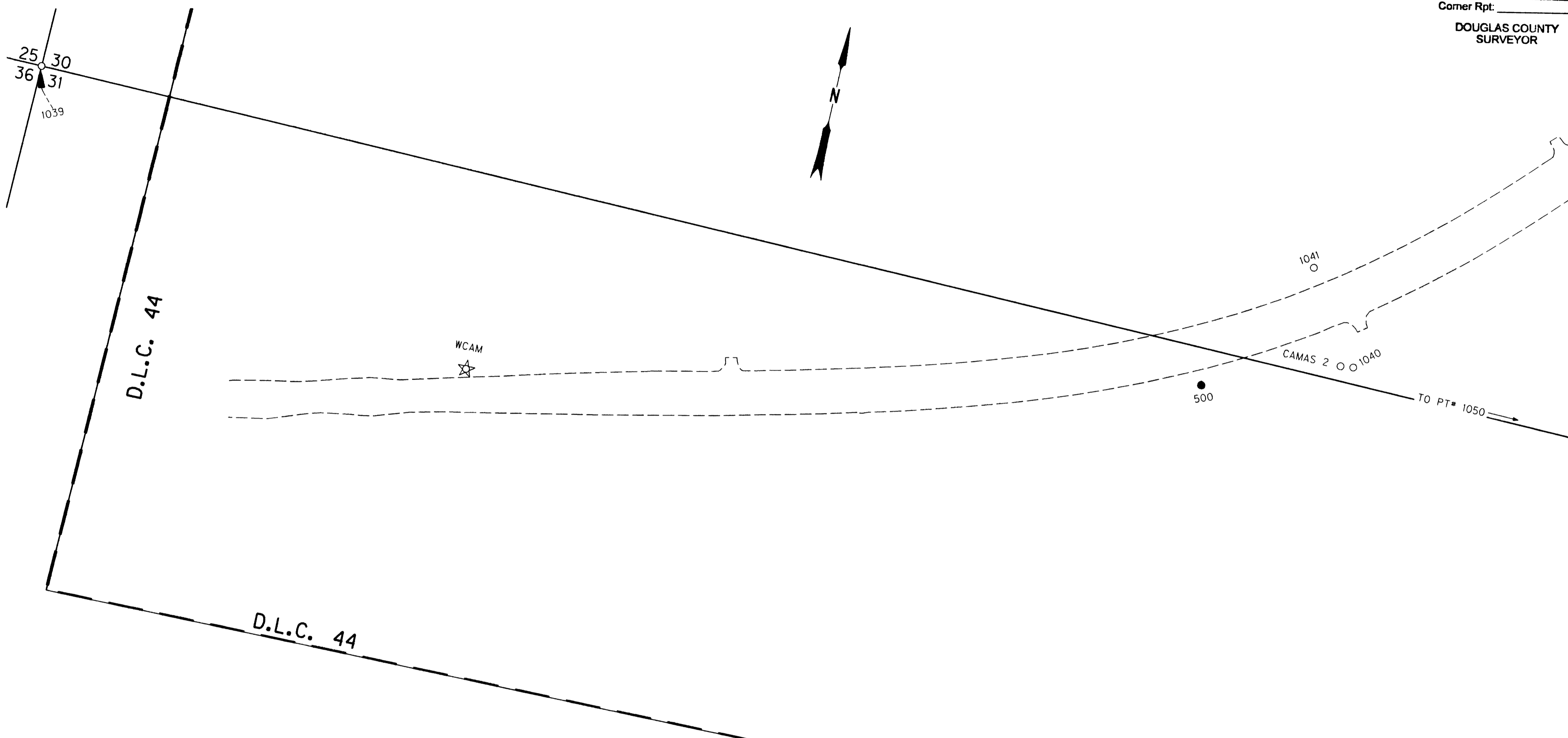


SW 1/4 SEC. 30 , NW 1/4 SEC. 31 , T.29 S. , R.8 W. , W.M.

FILED
 Date: 12/11/2007 By: JP
 This survey consists of:
 Map: ST Hwy. 42-013 D
 Narrative:
 Corner Rpt:

DOUGLAS COUNTY
 SURVEYOR



SEE CONTROL POINT TABLE
 ON SHEET 1 & 2

SEE LINE & POINT LEGEND
 ON SHEET 1

REGISTERED
 PROFESSIONAL
 LAND SURVEYOR

James M. Stanley
 OREGON
 JULY 11, 2000
 JAMES M. STANLEY
 49863LS

EXPIRES 06/30/08

SI FEET OREGON DEPARTMENT OF TRANSPORTATION
 HORIZONTAL CONTROL, RECOVERY AND RETRACEMENT MAP
 OR42: HARD CASH LN. - QUIET MOUNTAIN RD. RESURFACING
 COOS BAY - ROSEBURG HWY
 DOUGLAS COUNTY
 FILE: 13791RW.DGN

FOR ODOT REGION 3
 3500 NW. STEWART PKWY.
 ROSEBURG, OR. 97470

DEC. 7, 2007
 SCALE: 1" = 100'
 SHEET 4 OF 11

RECOVERED MONUMENT LIST NOTE: OFFSETS WITH A - (MINUS) ARE LEFT, WITHOUT IS FOR THE RIGHT BENCHMARKS P76 AND N741X (NAVD 88 ELEV.) WERE RECOVERED AND USED TO ESTABLISH ALL ELEVATIONS.

PT. NO.	LDP	LDP	ELEV	STATION	OFFSET	DATE	DESCRIPTION	REFERENCE
1039	506383.95	4065666.17				5/24/2006	FD. 1 1/4" O.D. IRON PIPE WITH 2 1/2" BRASS DISK STAMPED "COUNTY SURVEYORS OFFICE T29S R8W, R8W S25, S30, S36, S31 BLM 1965 1962" 1.0 FT. ABOVE SURFACE IN GOOD CONDITION	DCSO PT # 100200
1040	506350.74	4067608.78				5/22/2006	FD. 2 7/8" DIA. BRASS DISK IN CONCRETE STAMPED "CAMAS 2 NO. 5 1990 DOUGLAS CO. SURVEYORS OFFICE" 0.2 FT. ABOVE SURFACE IN GOOD CONDITION	DCSO PROJ # GPS 27/83
1041	506479.59	4067522.43				5/22/2006	FD. 2 7/8" DIA. BRASS DISK IN CONCRETE PEDESTAL STAMPED "CAMAS 2 NO. 4 1990 DOUGLAS CO. SURVEYORS OFFICE" 0.2 FT. ABOVE SURFACE IN GOOD CONDITION	DCSO PROJ # GPS 27/83
1050	506299.05	4068572.94				5/31/2006	FD. 2 3/8" O.D. PIPE WITH 3" BRASS DISK STAMPED "U.S. DEPT. OF THE INTERIOR BUR. OF LAND MANAGEMENT CADASTRAL SURVEY UNLAWFUL TO DISTURB T29S R8W 1/4 S30 S31 1965" .03 FT. ABOVE SURFACE GOOD CONDITION	DCSO PT # 140200
CAMAS2	506349.08	4067589.56	1095.17			5/22/2006	FD. 3 3/4" DIA. BRASS DISK IN 9" X 9" CONCRETE STAMPED "U.S. COAST & GEODETIC SURVEY AZMUTH MARK CAMAS 2 1972 FOR INFORMATION WRITE DIRECTOR WASHINGTON D.C." 0.6 FT. ABOVE SURFACE GOOD STABILITY BUT HAS BEEN HIT BY MOWER	DCSO PROJ # GPS 27/83

ST. HWY. 42-013 D