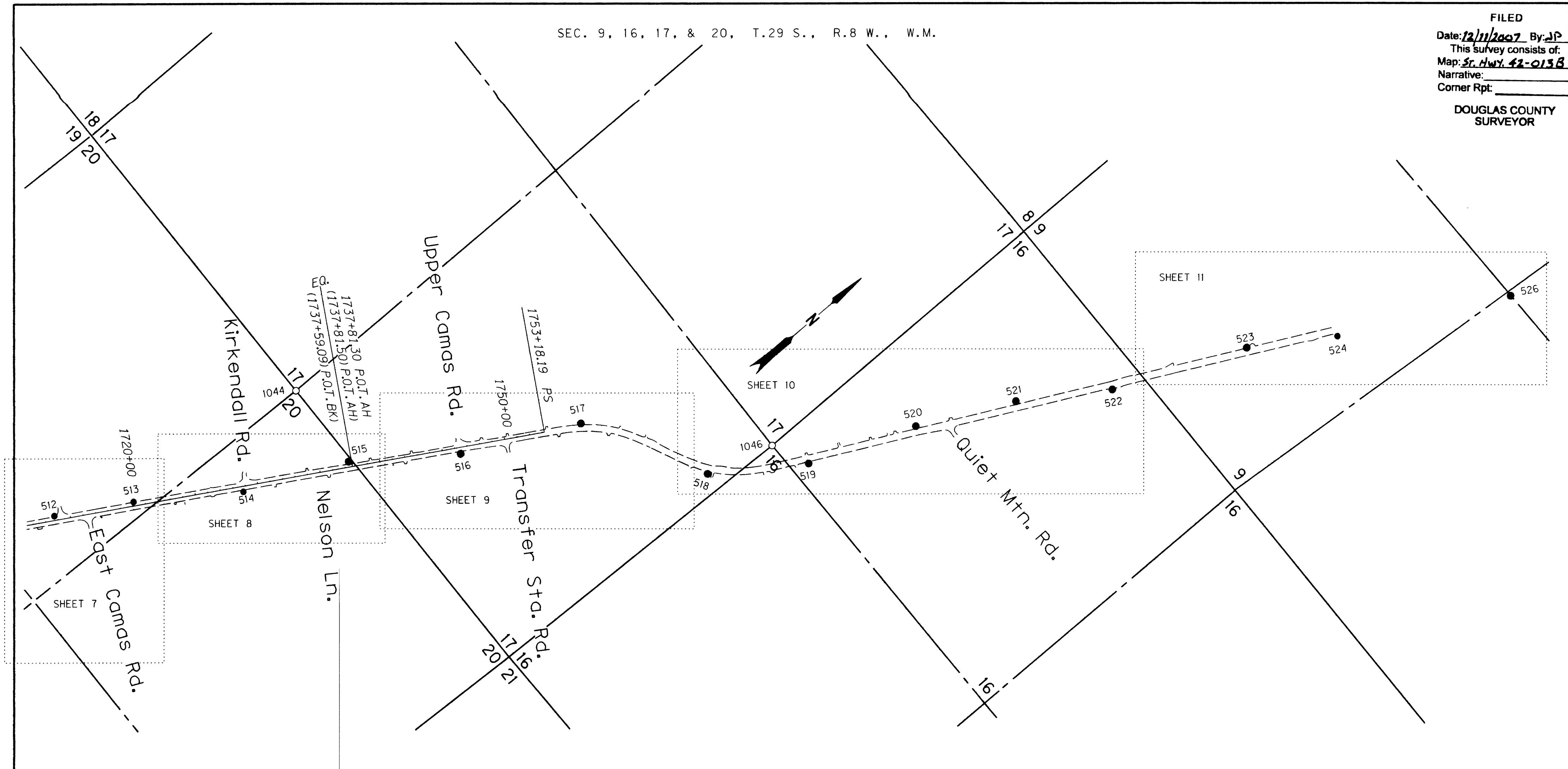


SEC. 9, 16, 17, & 20, T.29 S., R.8 W., W.M.

FILED
 Date: 12/11/2007 By: JP
 This survey consists of:
 Map: St. Hwy. 42-013B
 Narrative:
 Corner Rpt:
 DOUGLAS COUNTY
 SURVEYOR



RECOVERED MONUMENT LIST

PT. NO.	LDP NORTHING	LDP EASTING	ELEVATION	STATION	OFFSET	DATE	DESCRIPTION	REFERENCE
1044	516725.71	4074208.63	0.00	1734+26.73	-665.17	5/23/2006	FD. 1 1/4" O.D. IRON PIPE WITH 2 1/2" BRASS DISK STAMPED "COUNTY SURVEYORS OFFICE T29S R8W 1/4 S17, S20 1958" 0.3 FT. ABOVE SURFACE IN GOOD CONDITION 7" DIA. WOOD POST 0.5 FT. NORTH	CS 49/100
1046	519312.84	4076962.10	0.00			5/23/2006	FD. 1 1/4" O.D. IRON PIPE WITH 2 1/2" BRASS DISK STAMPED "COUNTY SURVEYORS OFFICE 1958 1/4 S17, S16 T29S R8W" 0.2 FT. ABOVE SURFACE IN GOOD CONDITION ROCK AS DESCRIBED BY BYRON ABUTS MONUMENT	CS 49/100

CONTROL MONUMENTS NOTE: ALL OFFSETS WITH A - (MINUS) ARE FOR THE LEFT, WITHOUT IS FOR THE RIGHT BENCHMARKS P76 AND N741X (NAVD 88 ELEV.) WERE RECOVERED AND USED TO ESTABLISH ALL ELEVATIONS.

PT. NO.	LDP NORTHING	LDP EASTING	ELEV.	STATION	OFFSET	DATE	DESCRIPTION
57	525200.30	4080155.34	1439.36			5/23/2006	FD. "MAG" NAIL AND WASHER STAMPED "ODOT 57" IN A.C. SHOULDER FROM PREVIOUS ODOT SURVEY (QUIET MTN. RD. - BENEDICT RD.) FLUSH WITH SURFACE IN GOOD CONDITION
59	524284.84	4079585.36	1445.42			5/23/2006	FD. "MAG" NAIL AND WASHER STAMPED "ODOT 59" IN A.C. SHOULDER FROM PREVIOUS ODOT SURVEY (QUIET MTN. RD. - BENEDICT RD.) FLUSH WITH SURFACE IN GOOD CONDITION
513	515184.34	4074045.93	1140.20	1720+11.58	-33.01	5/23/2006	SET 1" DIA. BRASS PLUG IN CONCRETE SIDEWALK STAMPED "ODOT CONTROL 513" FLUSH WITH SURFACE
514	515896.29	4074546.84	1149.72	1728+78.73	43.36	5/22/2006	SET 5/8" X 30" IRON REBAR WITH 1 1/2" BRASS CAP STAMPED "ODOT CONTROL 514" FLUSH WITH SURFACE
515	516681.82	4074901.41	1174.46	1737+36.16	-43.78	5/22/2006	SET 5/8" X 30" IRON REBAR WITH 1 1/2" BRASS CAP STAMPED "ODOT CONTROL 515" FLUSH WITH SURFACE
516	517396.97	4075424.66	1205.06	1746+39.49	50.31	5/23/2006	SET 1" DIA. BRASS PLUG IN BEDROCK STAMPED "ODOT CONTROL 516" FLUSH WITH SURFACE
517	518273.78	4075855.42	1258.66			5/23/2006	SET 5/8" X 30" IRON REBAR WITH 1 1/2" BRASS CAP STAMPED "ODOT CONTROL 517" 0.1 FT. BELOW SURFACE
518	518780.00	4076802.57	1316.06			5/23/2006	SET 5/8" X 30" IRON REBAR WITH 1 1/2" BRASS CAP STAMPED "ODOT CONTROL 518" FLUSH WITH SURFACE
519	519441.03	4077256.63	1343.52			5/23/2006	SET 5/8" X 30" IRON REBAR WITH 1 1/2" BRASS CAP STAMPED "ODOT CONTROL 519" 0.1 FT. BELOW SURFACE
520	520274.32	4077579.88	1368.14			5/23/2006	SET 1" DIA. BRASS PLUG IN BEDROCK STAMPED "ODOT CONTROL 520" FLUSH WITH SURFACE
521	521004.15	4077939.25	1378.87			5/23/2006	SET 5/8" X 30" IRON REBAR WITH 1 1/2" BRASS CAP STAMPED "ODOT CONTROL 521" FLUSH WITH SURFACE
522	521642.49	4078361.31	1359.95			5/23/2006	SET 1" DIA. BRASS PLUG IN CONCRETE APRON FOR INLET STAMPED "ODOT CONTROL 522" FLUSH WITH SURFACE
523	522662.98	4078793.96	1360.90			5/23/2006	SET 5/8" X 30" IRON REBAR WITH 1 1/2" BRASS CAP STAMPED "ODOT CONTROL 523" 0.1 FT. BELOW SURFACE
524	523267.32	4079187.32	1396.59			5/23/2006	SET 5/8" X 30" IRON REBAR WITH 1 1/2" BRASS CAP STAMPED "ODOT CONTROL 524" 0.3 FT. BELOW SURFACE STABILIZED IN CONCRETE
525	506452.97	4068366.20				5/22/2006	SET WOOD HUB & TACK FLUSH WITH SURFACE
526	524517.66	4079826.49				5/23/2006	SET 1" DIA. BRASS PLUG IN BEDROCK STAMPED "ODOT CONTROL 526" FLUSH WITH ROCK SURFACE 0.8 FT BELOW GROUND SURFACE

CONTROL NETWORK SCHEMATIC
 NOT TO SCALE

REGISTERED
 PROFESSIONAL
 LAND SURVEYOR
James M. Stanley
 OREGON
 JULY 11, 2000
 JAMES M. STANLEY
 49863LS
 EXPIRES 06/30/08

SEE LINE & POINT LEGEND
 ON SHEET 1

SI FEET
T OREGON DEPARTMENT OF TRANSPORTATION
 HORIZONTAL CONTROL, RECOVERY AND RETRACEMENT MAP
 OR42: HARD CASH LN. - QUIET MOUNTAIN RD. RESURFACING
 COOS BAY - ROSEBURG HWY
 DOUGLAS COUNTY
 FILE: 13791RW.DGN

FOR ODOT REGION 3
 3500 NW STEWART PKWY.
 ROSEBURG, OR. 97470
 DEC. 7, 2007
 SHEET 2 OF 11

ST. HWY. 42-013 B.