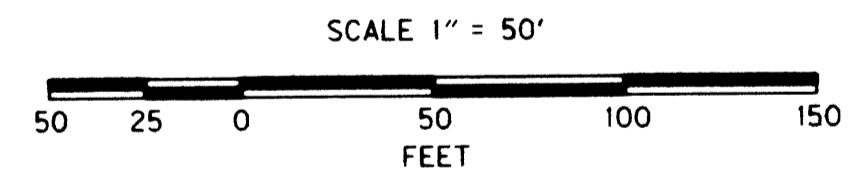
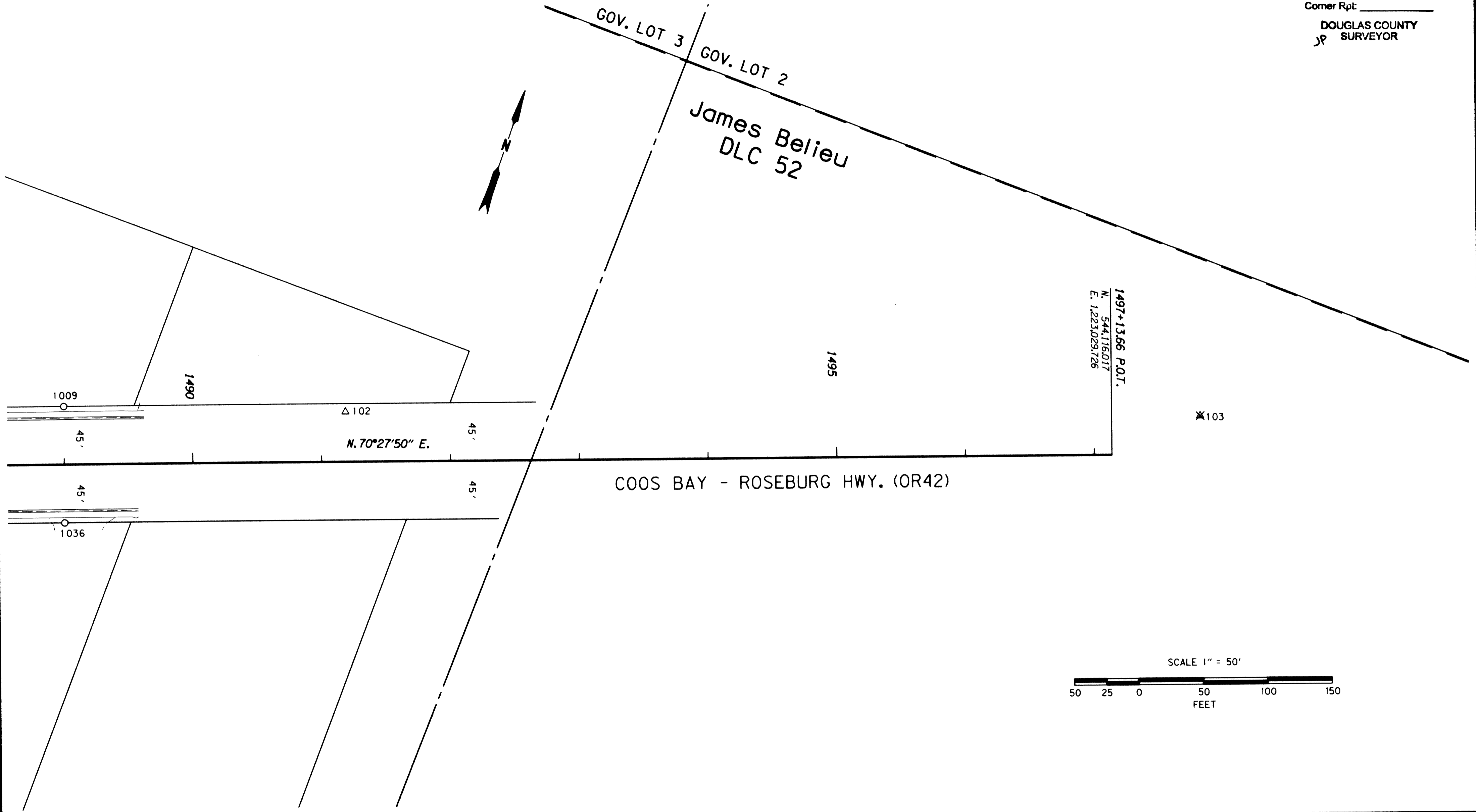


NW 1/4 & NE 1/4 SEC. 21, T.28S., R.6W., W.M.


FILED  
Date: 6-27-2007 By: JP  
This survey consists of: 7 Pgs  
Map: 42-012 G  
Narrative: \_\_\_\_\_  
Corner Rpt: \_\_\_\_\_  
DOUGLAS COUNTY  
SURVEYOR  
JP



SEE LINE LEGEND &  
MONUMENT TABLE  
ON SHEET 2

LEGEND	
✱	DESTROYED NETWORK POINT
△	FOUND NETWORK POINT
○	FOUND MONUMENT

REGISTERED  
PROFESSIONAL  
LAND SURVEYOR  
*Marshall R. Wagstaff*  
OREGON  
JANUARY 9, 2001  
MARSHALL R. WAGSTAFF  
49476LS  
EXPIRES 06/30/08

 OREGON DEPARTMENT OF TRANSPORTATION  
RIGHT-OF-WAY BOUNDARY MONUMENTATION MAP  
OR42: LOOKINGGLASS CR. - GLENHART AVE.  
COOS BAY - ROSEBURG HWY. (42)  
DOUGLAS COUNTY FILE: 12731RW.DGN  
FOR ODOT REGION 3  
3500 NW. STEWART PKWY.  
ROSEBURG, OR. 97470  
JUNE 26, 2007  
SCALE: 1" = 50'  
SHEET 7 OF 7