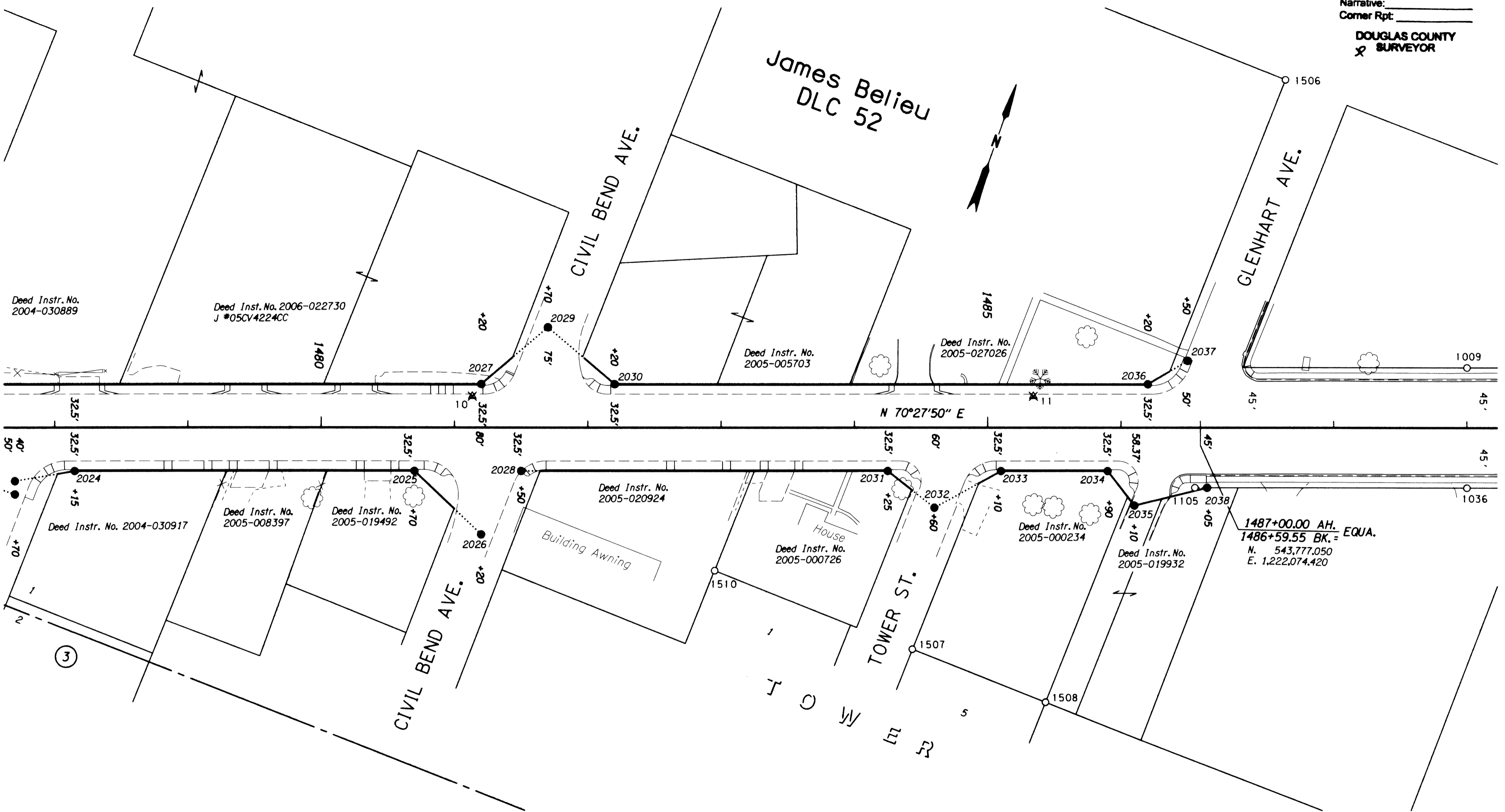


NW 1/4 SEC. 21, T.28S., R.6W., W.M.

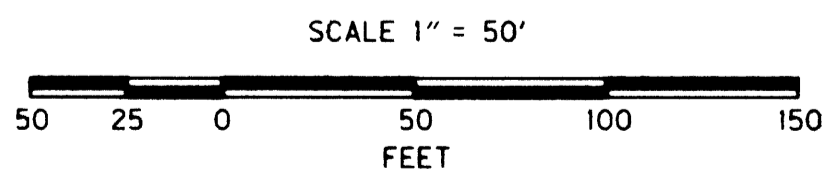
FILED
Date: 6-27-2007 By: JP
This survey consists of: 7 Pgs
Map: 42-012 F
Narrative: _____
Corner Rpt: _____
DOUGLAS COUNTY
SURVEYOR



1487+00.00 AH.
1486+59.55 BK. = EQUA.
N. 543,777.050
E. 1,222,074.420

LEGEND	
✱	DESTROYED NETWORK POINT
○	FOUND MONUMENT
●	SET RIGHT OF WAY MONUMENT

SEE LINE LEGEND &
MONUMENT TABLE
ON SHEET 2



REGISTERED
PROFESSIONAL
LAND SURVEYOR
Marshall R. Wagstaff
OREGON
JANUARY 9, 2001
MARSHALL R. WAGSTAFF
49476LS
EXPIRES 06/30/08

ODOT OREGON DEPARTMENT OF TRANSPORTATION
RIGHT-OF-WAY BOUNDARY MONUMENTATION MAP
OR42: LOOKINGGLASS CR. - GLENHART AVE.
COOS BAY - ROSEBURG HWY. (42)
DOUGLAS COUNTY FILE: 12731RW.DGN

FOR ODOT REGION 3
3500 NW. STEWART PKWY.
ROSEBURG, OR. 97470

JUNE 26, 2007
SCALE: 1" = 50'
SHEET 6 OF 7