

NETWORK POINT COORDINATE TABLE

PT. ID.	LDP NORTHING	LDP EASTING	ELEV.	STATION	OFFSET	DATE	DESCRIPTION	REFERENCE
3	542497.102	1218567.135	517.98	1449+26.16	33.43	4/16/2007	FD. 5/8" IRON REBAR W/ 1 1/2" BRASS CAP STAMPED "ODOT CONTROL 3", STABILIZED WITH CONCRETE	ST. HWY. 42-009
7	543256.420	1219593.305	518.05			4/16/2007	FD. 1" BRASS PLUG IN CONCRETE WALK STAMPED "ODOT CONTROL 7"	ST. HWY. 42-009
100	543563.643	1222908.648	534.19			4/16/2007	FD. 1 1/8" BRASS PLUG STAMPED "ODOT CONTROL 100", FLUSH WITH CONCRETE WALK	ST. HWY. 42-007
102	543953.472	1222456.109	535.78	1491+18.71	-38.63	4/16/2007	FD. 1 1/8" BRASS PLUG STAMPED "ODOT CONTROL 102", FLUSH WITH CONCRETE WALK	ST. HWY. 42-007
105	545022.879	1223260.009	567.01			4/16/2007	FD. 1 1/8" BRASS PLUG STAMPED "ODOT CONTROL 105" IN CONCRETE WALK	ST. HWY. 42-007

NOTE: OFFSETS WITH A - (MINUS) ARE LEFT, WITHOUT ARE RIGHT

RECOVERED MONUMENT TABLE

PT. ID.	LDP NORTHING	LDP EASTING	STATION	OFFSET	DATE	DESCRIPTION	REFERENCE
1009	543886.339	1222247.857	1489+00.00	-45.00	4/17/2007	FD. 1 1/2" ALUM. CAP STAMPED "OREG. STATE HWY. DIV. RW 50", FLUSH W/ A.C., FAIR CONDITION	DRG. 9B-7-5
1036	543801.520	1222277.957	1489+00.00	45.00	4/17/2007	FD. 1 1/2" ALUM. CAP STAMPED "OREG. STATE HWY. DIV. RW 45", FLUSH W/ A.C., FAIR CONDITION	DRG. 9B-7-5
1105	543733.266	1222085.498	1486+55.35	44.97	4/17/2007	FD. 5/8" IRON REBAR W/ 1 1/4" PLASTIC CAP 0.1' BELOW SURFACE STAMPED "BTS ENG. SURV"	#2000-0024
1508	543544.607	1222033.653			4/17/2007	FD. 5/8" IRON REBAR W/ 1 1/2" PLASTIC CAP STAMPED "BTS ENG. SURV", 0.5' BELOW SURFACE, GOOD CONDITION	#2000-0024
1509	543549.896	1221881.400			4/17/2007	FD. 3/4" I.D. IRON PIPE 0.8' ABOVE SURFACE, GOOD CONDITION	NOT RECORDED
1510	543554.311	1221766.767			4/17/2007	FD. 1 3/8" I.D. IRON PIPE 0.3' BELOW SURFACE, GOOD CONDITION	NOT RECORDED
1524	543026.229	1219838.543	1463+01.32	-40.08	4/17/2007	FD. 5/8" IRON REBAR W/ 1 1/4" PLASTIC CAP (DAMAGED) 0.1' ABOVE SURFACE, GOOD CONDITION	#1999-0080B
1527	542696.138	1218886.731	1452+93.92	-47.28	4/17/2007	FD. 5/8" IRON REBAR W/ 1 1/4" PLASTIC CAP STAMPED "LANDMARK LS2237" 0.15' ABOVE SURFACE, GOOD CONDITION	#99-24689
1528	542457.234	1218235.195	1446+00.00	-40.00	4/17/2007	FD. 1/2" IRON REBAR FLUSH W/SURFACE, GOOD CONDITION	M7-11
1529	542778.227	1217057.232			4/17/2007	FD. 1" IRON PIPE W/ 2 1/2" BRASS CAP STAMPED "COUNTY SURVEYORS OFFICE T28SR6W DLC49/DLC51/DLC52", 1.2' ABOVE SURFACE, GOOD CONDITION	DCSO POINT ID #051010

NOTE: POINTS IN THE RECOVERED MONUMENT TABLE WERE VISUALLY OBSERVED ONLY, NOT FIELD TIED.

RIGHT-OF-WAY MONUMENT TABLE

PT. ID.	LDP NORTHING	LDP EASTING	STATION	OFFSET	DATE	DESCRIPTION
2000	542977.682	1219642.154	1461+00.00	-60.00	4/24/2007	SET 5/8" X 30" IRON REBAR W/ 1 1/2" ALUM. CAP STAMPED "ODOT RIGHT OF WAY FC", 0.1' BELOW A.C. SURFACE
2001	542972.210	1219686.539	1461+40.00	-40.00	4/24/2007	SET 5/8" X 30" IRON REBAR W/ 1 1/2" ALUM. CAP STAMPED "ODOT RIGHT OF WAY", 0.1' BELOW SURFACE
2002	543025.714	1219837.328	1463+00.00	-40.00	4/24/2007	SET 5/8" X 30" IRON REBAR W/ 1 1/2" ALUM. CAP STAMPED "ODOT RIGHT OF WAY", 0.1' BELOW SURFACE
2003	543018.645	1219839.836	1463+00.00	-32.50	4/24/2007	SET 5/8" X 30" IRON REBAR W/ 1 1/2" ALUM. CAP STAMPED "ODOT RIGHT OF WAY", 0.1' BELOW SURFACE
2004	543068.805	1219981.201	1464+50.00	-32.50	4/24/2007	SET 5/8" X 30" IRON REBAR W/ 1 1/2" ALUM. CAP STAMPED "ODOT RIGHT OF WAY", 0.2' BELOW SURFACE
2005	543115.394	1220060.168	1465+40.00	-50.00	4/24/2007	SET 5/8" X 30" IRON REBAR W/ 1 1/2" ALUM. CAP STAMPED "ODOT RIGHT OF WAY FC", 0.1' BELOW A.C. SURFACE
2006	543105.970	1220063.512	1465+40.00	-40.00	4/24/2007	SET 5/8" X 30" IRON REBAR W/ 1 1/2" ALUM. CAP STAMPED "ODOT RIGHT OF WAY FC", 0.1' BELOW A.C. SURFACE
2007	542990.827	1219955.815	1464+00.00	32.50	4/24/2007	SET 5/8" X 30" IRON REBAR W/ 1 1/2" ALUM. CAP STAMPED "ODOT RIGHT OF WAY", 0.1' BELOW SURFACE
2008	543112.277	1220103.717	1465+80.00	-32.50	4/23/2007	SET 5/8" X 30" IRON REBAR W/ 1 1/2" ALUM. CAP STAMPED "ODOT RIGHT OF WAY", 0.1' BELOW SURFACE
2009	543216.547	1220591.957	1470+75.00	32.50	4/24/2007	SET 5/8" X 30" IRON REBAR W/ 1 1/2" ALUM. CAP STAMPED "ODOT RIGHT OF WAY", 0.3' BELOW SURFACE
2010	543184.854	1220629.729	1471+00.00	75.00	4/24/2007	SET 5/8" X 30" IRON REBAR W/ 1 1/2" ALUM. CAP STAMPED "ODOT RIGHT OF WAY FC", 0.1' BELOW A.C. SURFACE
2011	543217.839	1220618.025	1471+00.00	40.00	4/24/2007	SET 5/8" X 30" IRON REBAR W/ 1 1/2" ALUM. CAP STAMPED "ODOT RIGHT OF WAY FC", 0.3' BELOW SURFACE
2012	543287.837	1220598.494	1471+05.00	-32.50	4/23/2007	SET 5/8" X 30" IRON REBAR W/ 1 1/2" ALUM. CAP STAMPED "ODOT RIGHT OF WAY", FLUSH W/ NATURAL SURFACE 1.0' BELOW LANDSCAPE BRICKS
2013	543319.894	1220645.478	1471+60.00	-47.00	4/24/2007	SET 5/8" X 30" IRON REBAR W/ 1 1/2" ALUM. CAP STAMPED "ODOT RIGHT OF WAY FC", 0.1' BELOW A.C. SURFACE
2014	543332.146	1220641.131	1471+60.00	-60.00	4/24/2007	SET 5/8" X 30" IRON REBAR W/ 1 1/2" ALUM. CAP STAMPED "ODOT RIGHT OF WAY FC", 0.1' BELOW A.C. SURFACE
2015	543244.971	1220672.063	1471+60.00	32.50	4/24/2007	SET 5/8" X 30" IRON REBAR W/ 1 1/2" ALUM. CAP STAMPED "ODOT RIGHT OF WAY FC", 0.1' BELOW SURFACE
2016	543319.605	1220688.025	1472+00.00	-32.50	4/23/2007	SET 5/8" X 30" IRON REBAR W/ 1 1/2" ALUM. CAP STAMPED "ODOT RIGHT OF WAY", 0.1' BELOW SURFACE
2017	543398.189	1220909.496	1474+35.00	-32.50	4/23/2007	SET 5/8" X 30" IRON REBAR W/ 1 1/2" ALUM. CAP STAMPED "ODOT RIGHT OF WAY", 0.2' BELOW SURFACE
2018	543426.385	1220936.629	1474+70.00	-50.00	4/23/2007	SET 5/8" X 30" IRON REBAR W/ 1 1/2" ALUM. CAP STAMPED "ODOT RIGHT OF WAY FC", 0.1' BELOW A.C. SURFACE
2019	543483.539	1220948.182	1475+00.00	-100.00	4/23/2007	SET 5/8" X 30" IRON REBAR W/ 1 1/2" ALUM. CAP STAMPED "ODOT RIGHT OF WAY FC", 0.1' BELOW A.C. SURFACE
2020	543433.301	1221008.451	1475+40.00	-32.50	4/23/2007	SET 5/8" X 30" IRON REBAR W/ 1 1/2" ALUM. CAP STAMPED "ODOT RIGHT OF WAY", 0.1' BELOW SURFACE
2021	543432.235	1221199.825	1477+20.00	32.50	4/23/2007	SET 5/8" X 30" IRON REBAR W/ 1 1/2" ALUM. CAP STAMPED "ODOT RIGHT OF WAY", 0.1' BELOW A.C. SURFACE
2022	543432.462	1221252.798	1477+70.00	50.00	4/23/2007	SET 5/8" X 30" IRON REBAR W/ 1 1/2" ALUM. CAP STAMPED "ODOT RIGHT OF WAY FC", 0.1' BELOW A.C. SURFACE
2023	543441.887	1221249.454	1477+70.00	40.00	4/23/2007	SET 5/8" X 30" IRON REBAR W/ 1 1/2" ALUM. CAP STAMPED "ODOT RIGHT OF WAY FC", 0.1' BELOW A.C. SURFACE
2024	543464.003	1221289.356	1478+15.00	32.50	4/23/2007	SET 5/8" X 30" IRON REBAR W/ 1 1/2" ALUM. CAP STAMPED "ODOT RIGHT OF WAY", 0.1' BELOW A.C. SURFACE
2025	543549.275	1221529.676	1480+70.00	32.50	4/23/2007	SET 5/8" X 30" IRON REBAR W/ 1 1/2" ALUM. CAP STAMPED "ODOT RIGHT OF WAY", 0.1' BELOW SURFACE
2026	543521.229	1221592.681	1481+20.00	80.00	4/24/2007	SET 5/8" X 30" IRON REBAR W/ 1 1/2" ALUM. CAP STAMPED "ODOT RIGHT OF WAY FC", 0.1' BELOW A.C. SURFACE
2027	543627.253	1221555.061	1481+20.00	-32.50	4/23/2007	SET 5/8" X 30" IRON REBAR W/ 1 1/2" ALUM. CAP STAMPED "ODOT RIGHT OF WAY", 0.1' BELOW SURFACE
2028	543576.027	1221605.070	1481+50.00	32.50	4/23/2007	SET 1" BRASS PLUG IN CONC. CURB GUTTER STAMPED "ODOT CONTROL FC"
2029	543684.026	1221587.971	1481+70.00	-75.00	4/23/2007	SET 5/8" X 30" IRON REBAR W/ 1 1/2" ALUM. CAP STAMPED "ODOT RIGHT OF WAY FC", 0.1' BELOW A.C. SURFACE
2030	543660.693	1221649.305	1482+20.00	-32.50	4/23/2007	SET 5/8" X 30" IRON REBAR W/ 1 1/2" ALUM. CAP STAMPED "ODOT RIGHT OF WAY", 0.2' BELOW SURFACE
2031	543667.987	1221864.239	1484+25.00	32.50	4/24/2007	SET 5/8" X 30" IRON REBAR W/ 1 1/2" ALUM. CAP STAMPED "ODOT RIGHT OF WAY", 0.1' BELOW SURFACE
2032	543653.774	1221906.420	1484+60.00	60.00	4/23/2007	SET 5/8" X 30" IRON REBAR W/ 1 1/2" ALUM. CAP STAMPED "ODOT RIGHT OF WAY FC", 0.1' BELOW A.C. SURFACE
2033	543696.411	1221944.346	1485+10.00	32.50	4/23/2007	SET 5/8" X 30" IRON REBAR W/ 1 1/2" ALUM. CAP STAMPED "ODOT RIGHT OF WAY", 0.1' BELOW SURFACE
2034	543723.162	1222019.740	1485+90.00	32.50	4/23/2007	SET 5/8" X 30" IRON REBAR W/ 1 1/2" ALUM. CAP STAMPED "ODOT RIGHT OF WAY", 0.1' BELOW SURFACE
2035	543705.470	1222047.240	1486+10.00	58.37	4/23/2007	SET 5/8" X 30" IRON REBAR W/ 1 1/2" ALUM. CAP STAMPED "ODOT RIGHT OF WAY FC", 0.1' BELOW A.C. SURFACE
2036	543794.453	1222026.277	1486+20.00	-32.50	4/23/2007	SET 5/8" X 30" IRON REBAR W/ 1 1/2" ALUM. CAP STAMPED "ODOT RIGHT OF WAY", 0.1' BELOW SURFACE
2037	543820.977	1222048.698	1486+50.00	-50.00	4/23/2007	SET 1" BRASS PLUG IN CONC. SIDEWALK STAMPED "ODOT CONTROL FC"
2038	543736.312	1222094.180	1487+05.00	45.00	4/23/2007	SET 5/8" X 30" IRON REBAR W/ 1 1/2" ALUM. CAP STAMPED "ODOT RIGHT OF WAY", 0.1' BELOW SURFACE
2039	542946.461	1219613.972	1460+63.00	-40.00	4/24/2007	SET 5/8" X 30" IRON REBAR W/ 1 1/2" ALUM. CAP STAMPED "ODOT RIGHT OF WAY", 0.2' BELOW SURFACE
2040	542962.056	1219619.049	1460+73.00	-53.00	4/24/2007	SET 1" BRASS PLUG STAMPED "ODOT CONTROL FC" SET FLUSH IN CONC. SIDEWALK

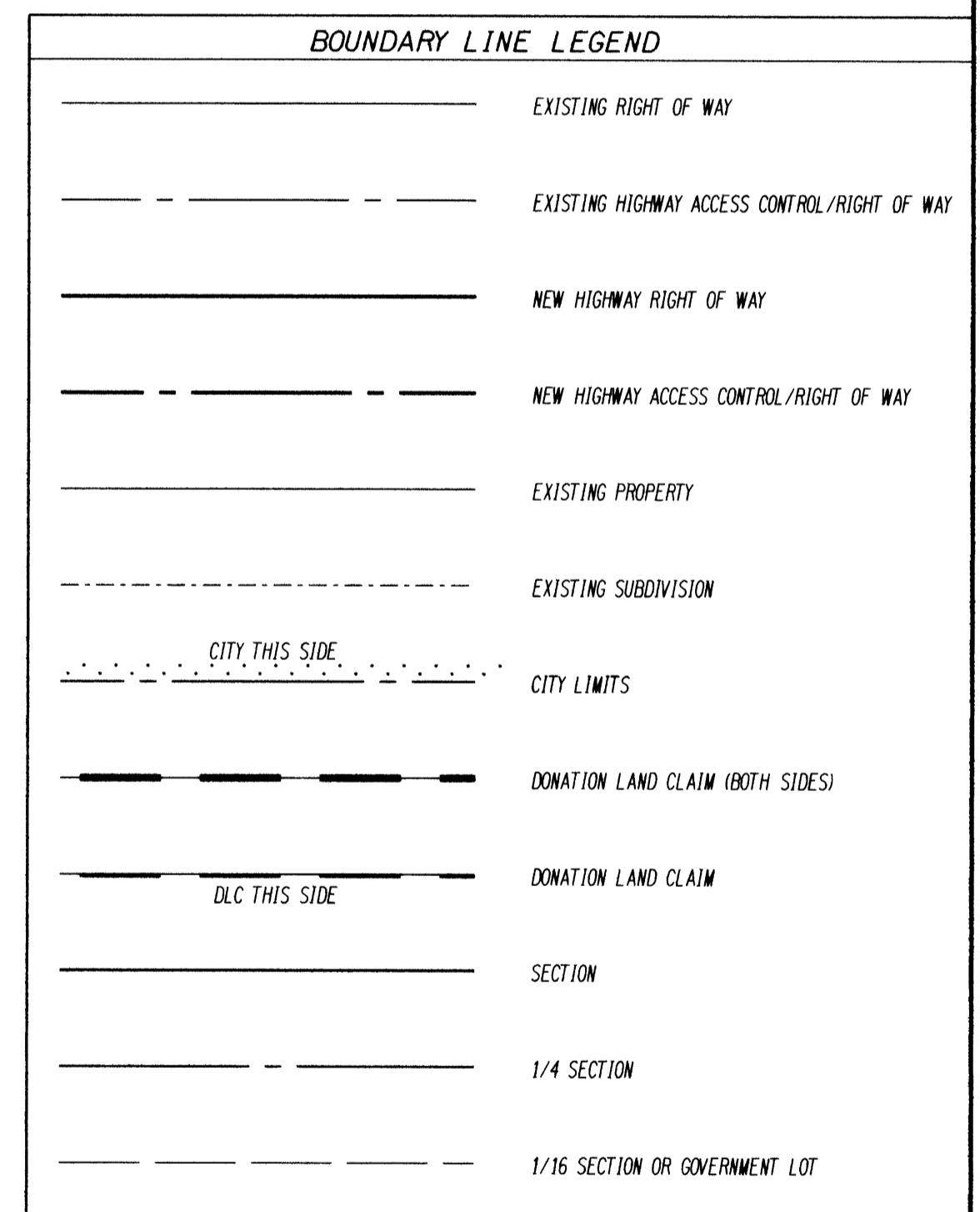
NOTE: POINTS STAMPED WITH THE LETTERS "FC" ARE FALSE CALL POINTS WHICH DEFINE THE RIGHT OF WAY LINE DIRECTION BUT NOT DISTANCE

REGISTERED PROFESSIONAL LAND SURVEYOR
 MARSHALL R. WAGSTAFF
 JANUARY 9, 2001
 MARSHALL R. WAGSTAFF
 49476LS
 EXPIRES 06/30/08

FILED
 Date: 6-27-2007 By: JP
 This survey consists of: 7 Pgs
 Map: 42-012B
 Narrative:
 Corner Rpt:
 DOUGLAS COUNTY SURVEYOR

GPS TRANSFORMATION RESIDUALS

PT. NO.	NORTHING DIFF. FT.	EASTING DIFF. FT.	ELEV. DIFF. FT.
3	0.005	0.015	-0.022
7	0.003	-0.015	0.027
100	-0.020	0.058	0.005
102	0.015	-0.053	-0.001
105	-0.003	-0.006	-0.010



SURVEY FEET
 OREGON DEPARTMENT OF TRANSPORTATION
 RIGHT-OF-WAY BOUNDARY MONUMENTATION MAP
 OR42: LOOKINGGLASS CR. - GLENHART AVE.
 COOS BAY - ROSEBURG HWY. (42)
 DOUGLAS COUNTY FILE: 12731RW.DGN
 FOR ODOT REGION 3 JUNE 26, 2007
 3500 NW. STEWART PKWY. ROSEBURG, OR. 97470 SHEET 2 OF 7