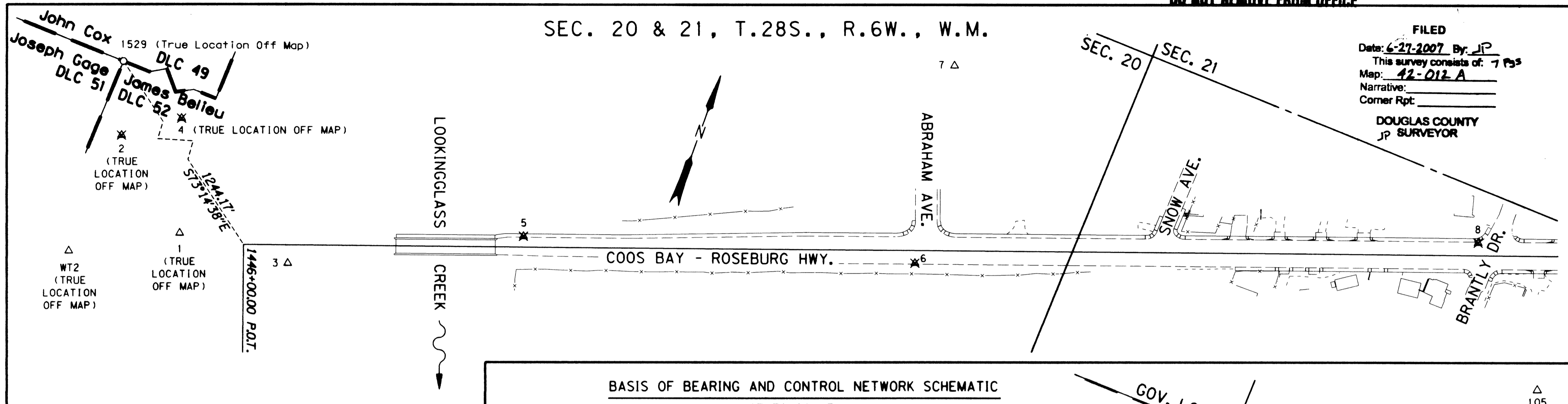
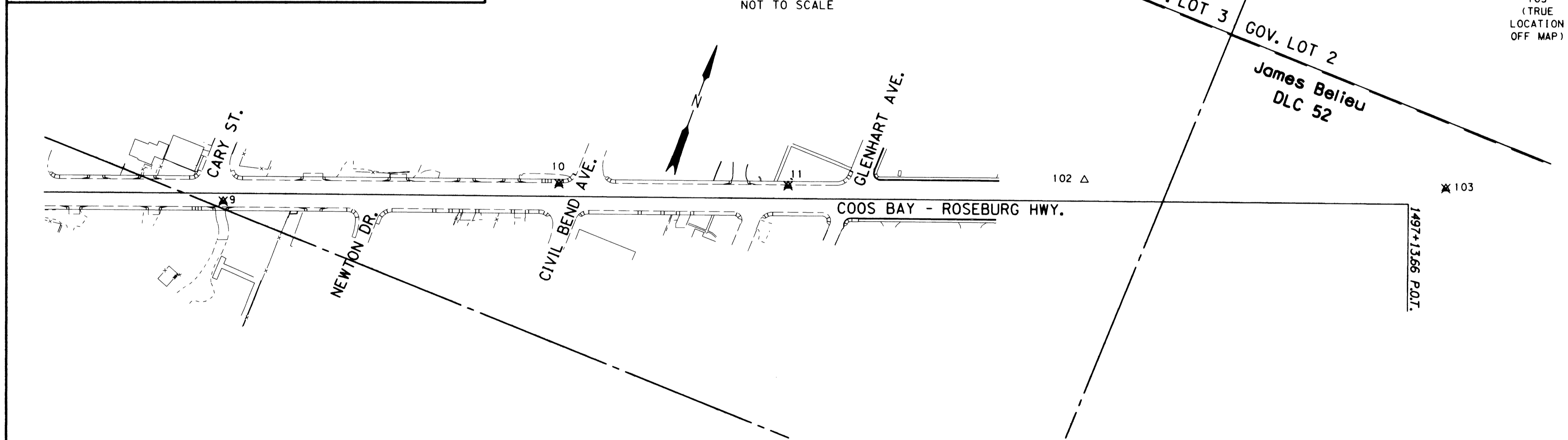


SEC. 20 & 21, T.28S., R.6W., W.M.

FILED
Date: 6-27-2007 By: JP
This survey consists of: 7 Pgs
Map: 42-012-A
Narrative:
Corner Rpt:
DOUGLAS COUNTY
JP SURVEYOR



BASIS OF BEARING AND CONTROL NETWORK SCHEMATIC
NOT TO SCALE



SURVEY NARRATIVE

THE PURPOSE OF THIS SURVEY WAS TO MONUMENT THE RIGHT OF WAY OF AN OREGON DEPARTMENT OF TRANSPORTATION (ODOT) PROJECT ON THE COOS BAY - ROSEBURG HIGHWAY (OR42) CALLED "OR42: LOOKINGGLASS CR. - GLENHART AVE.". RIGHT OF WAY MONUMENTATION WAS SET BY THE ODOT REGION 3 SURVEY CREW FROM ROSEBURG BASED UPON RIGHT OF WAY MAP 10B-19-34 IN APRIL OF 2007. RIGHT OF WAY MAP 10B-19-34 WAS BASED UPON AN ODOT SURVEY FILED IN DOUGLAS COUNTY AS ST. HWY. 42-009 MARCH 3, 2004.

THIS SURVEY UTILIZES COORDINATES AND BASIS OF BEARING TAKEN FROM SURVEYS ST. HWY. 42-007 AND ST. HWY. 42-009. THE METRIC COORDINATES USED IN SURVEY ST. HWY. 42-007 WERE CONVERTED TO ENGLISH, BY DIVIDING BY 0.30480061 (OR, 1 METER = 3937 US SURVEY FEET / 1200). SURVEY 42-009 USED THESE CONVERTED COORDINATES FOR A BASIS OF BEARING AND COORDINATE SYSTEM. THE ORIGINAL FIELD NOTES FOR SURVEY ST. HWY. 42-009 AND THIS SURVEY ARE ARCHIVED AT THE ODOT MAP AND PLAN CENTER IN SALEM IN BOOK #4102.

A ONE-STEP TRANSFORMATION WAS USED HOLDING NETWORK POINTS 3, 7, 100, 102, AND 105 TO CONVERT FROM G.P.S. DERIVED WGS 84 COORDINATES TO THE LOCAL DATUM PLANE COORDINATES OF THIS SURVEY. THE RESULTING RESIDUALS SHOWING HOW WELL THE TRANSFORMATION FIT THE NETWORK POINTS IS IN A TABLE ON SHEET 2.

A LEICA "GX1230" DUAL FREQUENCY G.P.S. RECEIVER USING PHASED DIFFERENTIAL REAL TIME KINEMATIC METHODS WAS USED TO SET THE RIGHT OF WAY MONUMENTS. THE LEICA GX1230 HAS THE FOLLOWING ACCURACY WHEN USING PHASED DIFFERENTIAL REAL TIME KINEMATIC METHODS: HORIZONTAL ERROR OF 10 MM + 1PPM, AND A VERTICAL ERROR OF 20 MM, + 1PPM.

REGISTERED
PROFESSIONAL
LAND SURVEYOR
Marshall R. Wagstaff
OREGON
JANUARY 9, 2001
MARSHALL R. WAGSTAFF
49476LS
EXPIRES 06/30/08

SEE LINE LEGEND &
MONUMENT TABLE
ON SHEET 2

LEGEND	
✱	DESTROYED NETWORK POINT
△	FOUND NETWORK POINT

OREGON DEPARTMENT OF TRANSPORTATION
RIGHT-OF-WAY BOUNDARY MONUMENTATION MAP
OR42: LOOKINGGLASS CR. - GLENHART AVE.
COOS BAY - ROSEBURG HWY. (42)
DOUGLAS COUNTY FILE: 12731RW.DGN

FOR ODOT REGION 3
3500 NW. STEWART PKWY.
ROSEBURG, OR. 97470
JUNE 26, 2007
SHEET 1 OF 7