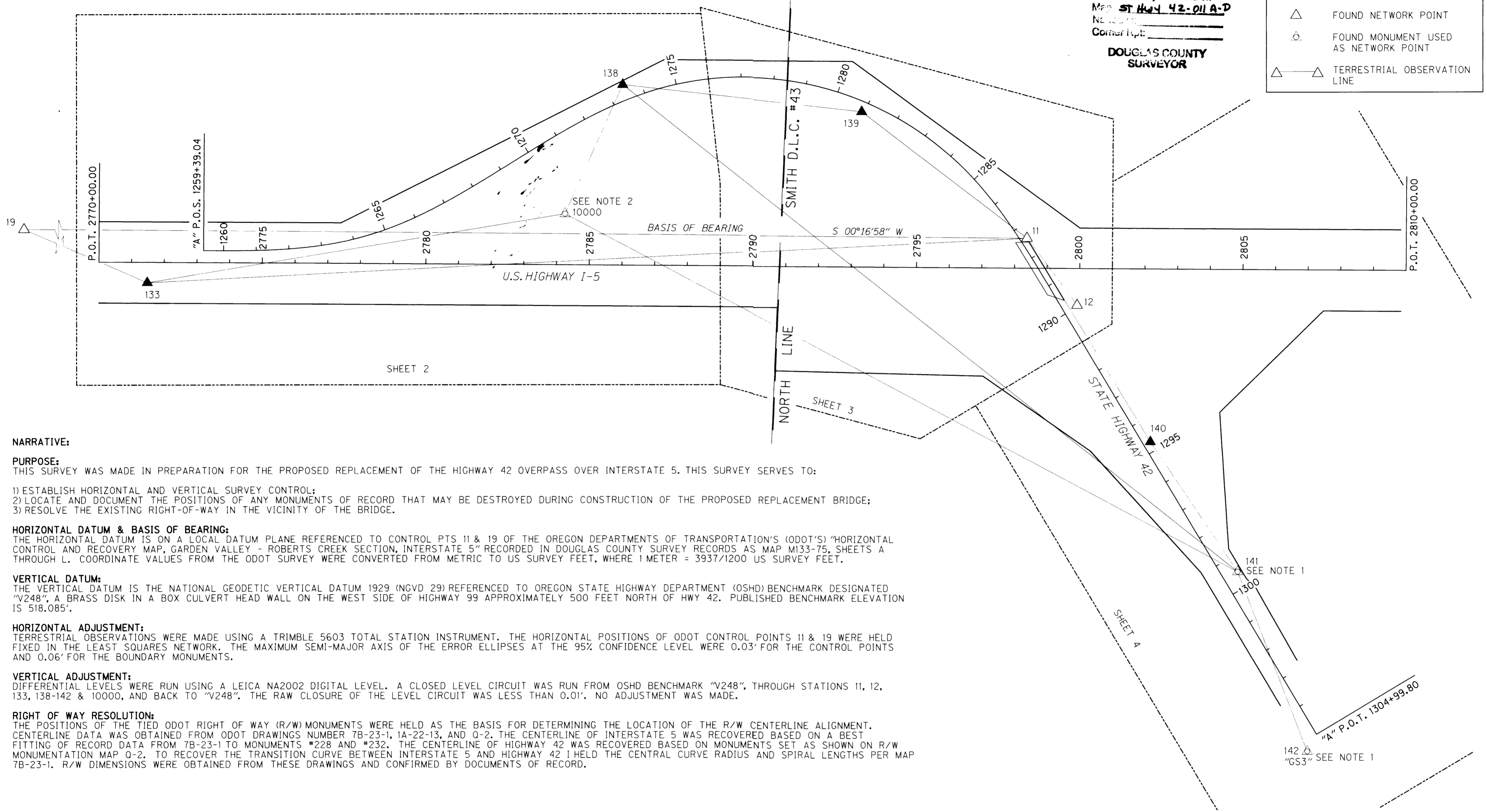


S.W. 1/4 SEC. 1, S.E. 1/4 SEC. 2, N.E. 1/4 SEC. 11, AND N.W. 1/4 SEC. 12,  
T. 28 S., R. 6 W., W.M.

**FILED**  
Date: 11-30-2004 By: JC  
This survey consists of:  
Map: ST HWY 42-011A-D  
Name: \_\_\_\_\_  
Corner Lpt: \_\_\_\_\_  
**DOUGLAS COUNTY SURVEYOR**

LEGEND	
▲	SET NETWORK POINT
△	FOUND NETWORK POINT
⊙	FOUND MONUMENT USED AS NETWORK POINT
△—△	TERRESTRIAL OBSERVATION LINE



**NARRATIVE:**

**PURPOSE:**  
THIS SURVEY WAS MADE IN PREPARATION FOR THE PROPOSED REPLACEMENT OF THE HIGHWAY 42 OVERPASS OVER INTERSTATE 5. THIS SURVEY SERVES TO:

- 1) ESTABLISH HORIZONTAL AND VERTICAL SURVEY CONTROL;
- 2) LOCATE AND DOCUMENT THE POSITIONS OF ANY MONUMENTS OF RECORD THAT MAY BE DESTROYED DURING CONSTRUCTION OF THE PROPOSED REPLACEMENT BRIDGE;
- 3) RESOLVE THE EXISTING RIGHT-OF-WAY IN THE VICINITY OF THE BRIDGE.

**HORIZONTAL DATUM & BASIS OF BEARING:**

THE HORIZONTAL DATUM IS ON A LOCAL DATUM PLANE REFERENCED TO CONTROL PTS 11 & 19 OF THE OREGON DEPARTMENTS OF TRANSPORTATION'S (ODOT'S) "HORIZONTAL CONTROL AND RECOVERY MAP, GARDEN VALLEY - ROBERTS CREEK SECTION, INTERSTATE 5" RECORDED IN DOUGLAS COUNTY SURVEY RECORDS AS MAP M133-75, SHEETS A THROUGH L. COORDINATE VALUES FROM THE ODOT SURVEY WERE CONVERTED FROM METRIC TO US SURVEY FEET, WHERE 1 METER = 3937/1200 US SURVEY FEET.

**VERTICAL DATUM:**

THE VERTICAL DATUM IS THE NATIONAL GEODETIC VERTICAL DATUM 1929 (NGVD 29) REFERENCED TO OREGON STATE HIGHWAY DEPARTMENT (OSHD) BENCHMARK DESIGNATED "V248", A BRASS DISK IN A BOX CULVERT HEAD WALL ON THE WEST SIDE OF HIGHWAY 99 APPROXIMATELY 500 FEET NORTH OF HWY 42. PUBLISHED BENCHMARK ELEVATION IS 518.085'.

**HORIZONTAL ADJUSTMENT:**

TERRESTRIAL OBSERVATIONS WERE MADE USING A TRIMBLE 5603 TOTAL STATION INSTRUMENT. THE HORIZONTAL POSITIONS OF ODOT CONTROL POINTS 11 & 19 WERE HELD FIXED IN THE LEAST SQUARES NETWORK. THE MAXIMUM SEMI-MAJOR AXIS OF THE ERROR ELLIPSES AT THE 95% CONFIDENCE LEVEL WERE 0.03' FOR THE CONTROL POINTS AND 0.06' FOR THE BOUNDARY MONUMENTS.

**VERTICAL ADJUSTMENT:**

DIFFERENTIAL LEVELS WERE RUN USING A LEICA NA2002 DIGITAL LEVEL. A CLOSED LEVEL CIRCUIT WAS RUN FROM OSHD BENCHMARK "V248", THROUGH STATIONS 11, 12, 133, 138-142 & 10000, AND BACK TO "V248". THE RAW CLOSURE OF THE LEVEL CIRCUIT WAS LESS THAN 0.01'. NO ADJUSTMENT WAS MADE.

**RIGHT OF WAY RESOLUTION:**

THE POSITIONS OF THE TIED ODOT RIGHT OF WAY (R/W) MONUMENTS WERE HELD AS THE BASIS FOR DETERMINING THE LOCATION OF THE R/W CENTERLINE ALIGNMENT. CENTERLINE DATA WAS OBTAINED FROM ODOT DRAWINGS NUMBER 7B-23-1, 1A-22-13, AND Q-2. THE CENTERLINE OF INTERSTATE 5 WAS RECOVERED BASED ON A BEST FITTING OF RECORD DATA FROM 7B-23-1 TO MONUMENTS #228 AND #232. THE CENTERLINE OF HIGHWAY 42 WAS RECOVERED BASED ON MONUMENTS SET AS SHOWN ON R/W MONUMENTATION MAP Q-2. TO RECOVER THE TRANSITION CURVE BETWEEN INTERSTATE 5 AND HIGHWAY 42 I HELD THE CENTRAL CURVE RADIUS AND SPIRAL LENGTHS PER MAP 7B-23-1. R/W DIMENSIONS WERE OBTAINED FROM THESE DRAWINGS AND CONFIRMED BY DOCUMENTS OF RECORD.

**NOTE:**

- 1) FOUND MONUMENTS PER ST. HWY. 42-002 (BY ODOT, 1998) AND ST. HWY. 42-007 (BY ODOT, 2002). NOT HELD IN CONTROL ADJUSTMENT.
- 2) FOUND MONUMENT PER ST. HWY. 15-006 (BY ODOT, 1999). MONUMENT NOT STABLE. NOT HELD IN CONTROL ADJUSTMENT.

NETWORK/TRaverse POINT COORDINATE TABLE LDP = LOCAL DATUM PLANE

PT. NO.	LDP NORTHING	LDP EASTING	ELEV.	DESCRIPTION
11	554856.5806	1236221.4780	556.39	FOUND 5/8" REBAR, WITH 1-1/2" BRASS CAP STAMPED "ODOT CONTROL 11," FLUSH WITH SURFACE
12	554723.2126	1236004.0177	552.24	FOUND 5/8" REBAR, WITH 1-1/2" BRASS CAP STAMPED "ODOT CONTROL 12," FLUSH WITH SURFACE
19	558858.1408	1236241.2320	-	FOUND 5/8" REBAR, WITH 1-1/2" BRASS CAP STAMPED "ODOT CONTROL 19," FLUSH WITH SURFACE
133	557546.8987	1236085.1051	527.81	SET 5/8" x 30" IRON ROD, WITH ORANGE PLASTIC CAP STAMPED "BLUEDOT CONTROL," FLUSH WITH SURFACE
138	556092.3406	1236690.8537	543.26	SET 5/8" x 30" IRON ROD, WITH ORANGE PLASTIC CAP STAMPED "BLUEDOT CONTROL," FLUSH WITH SURFACE
139	555362.5134	1236609.3561	552.88	SET 5/8" x 30" IRON ROD, WITH ORANGE PLASTIC CAP STAMPED "BLUEDOT CONTROL," FLUSH WITH SURFACE
140	554478.8000	1235597.3236	544.33	SET MAGNETIC NAIL WITH WASHER STAMPED "BLUEDOT CONTROL"
141	554211.5058	1235199.5924	533.04	FOUND 5/8" REBAR, WITH 1-1/2" BRASS CAP STAMPED "ODOT CONTROL 123," FLUSH WITH SURFACE
142	553998.3253	1234649.4887	523.81	FOUND 5/8" IRON ROD WITH 1-1/2" ALUMINUM CAP STAMPED "ODOT GS3". USED AS NETWORK POINT.
10000	556268.7968	1236295.8544	519.40	FOUND 5/8" REBAR, WITH 1" BRASS CAP STAMPED "ODOT CONTROL 10," FLUSH WITH SURFACE. DISTURBED/NOT STABLE. DETERMINED NEW COORDINATES. [SURVEY 15-006 (BY ODOT, 1999); N=169550.969m, E=376823.713m, (NAD 27)]

REGISTERED PROFESSIONAL LAND SURVEYOR  
*Mark Mayer*  
OREGON  
JULY 14, 1998  
MARK J. MAYER  
2887  
RENEWAL: 12-31-04

**bluedot group**  
land surveying & mapping  
6750 franklin st, suite b  
tigard, or 97223  
v. 503.209.0558  
f. 503.620.2771

CAD FILE: 04012 HWY 42 ROS.DGN

OREGON DEPARTMENT OF TRANSPORTATION  
HORIZONTAL CONTROL, RECOVERY AND RETRACEMENT MAP  
HWY 42 OVERPASS AT I-5 INTERCHANGE  
U.S. HIGHWAY 42  
DOUGLAS COUNTY, OREGON

NOVEMBER 17, 2004 FOR ODOT REGION 3 SCALE: 1" = 200'  
355 CAPITOL ST. N.E., SALEM, OR 97301-3871

KEY NO. 13450 SHEET 1 OF 4