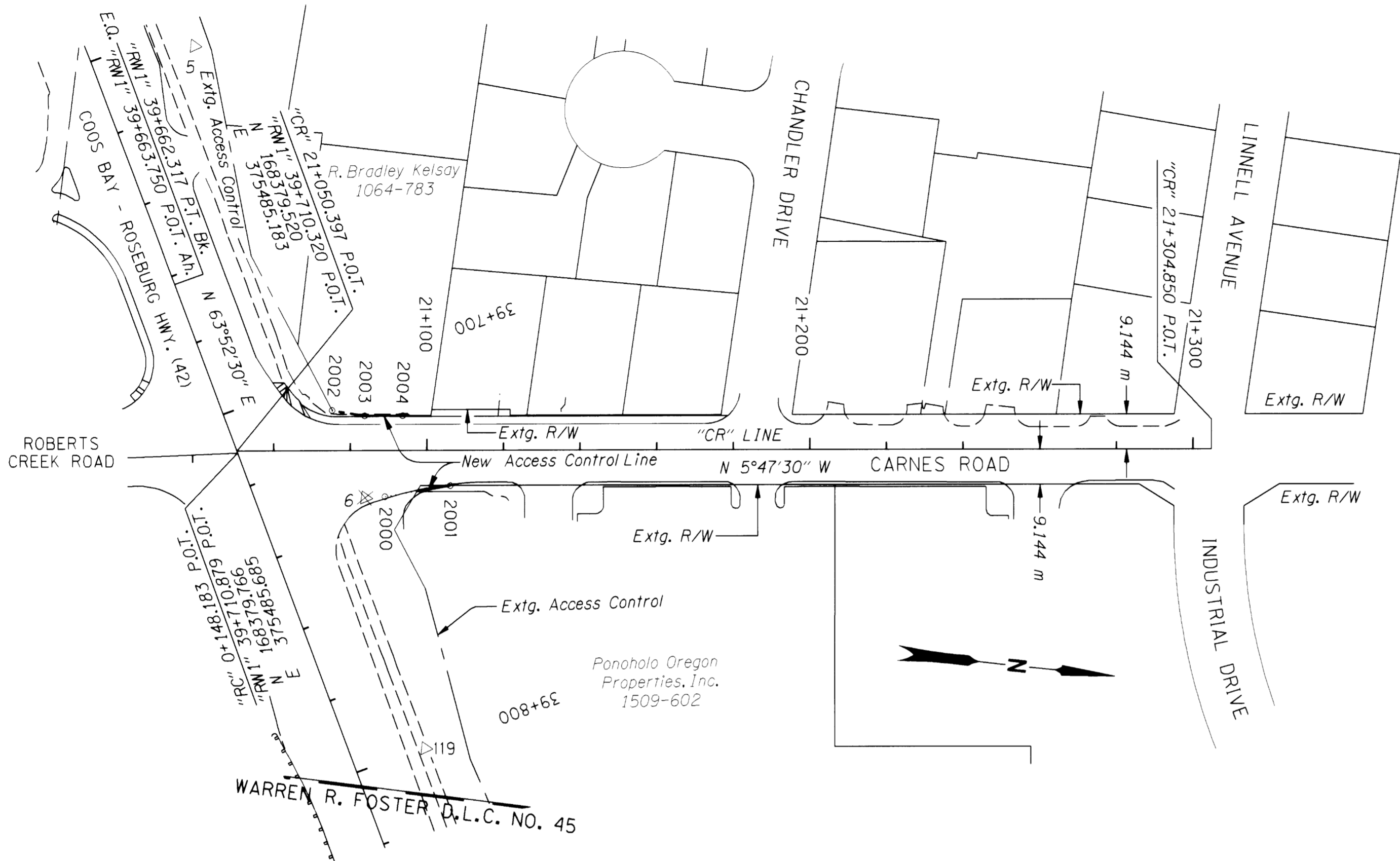


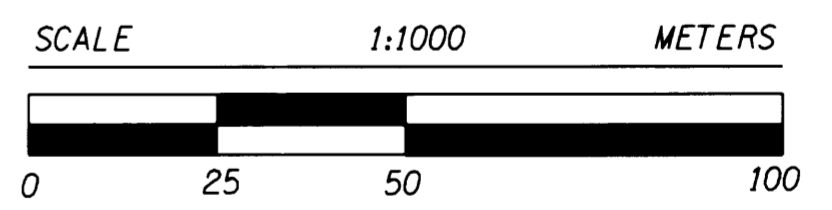
SW 1/4 SEC. 11, T. 28 S., R. 6 W., W. M.

FILED  
 Date: 6/16/2004 By: JP  
 This survey consists of: 4 PAGES  
 Map: ~~ST. HWY. 15-017D~~  
 Narrative: ST. HWY. 42-010 D  
 Corner Rpt:  
 DOUGLAS COUNTY  
 SURVEYOR



**LEGEND**

- △ FOUND NETWORK POINT
- ⊗ DESTROYED NETWORK POINT
- CALCULATED POINT
- EDGE OF PAVEMENT
- GUARDRAIL
- +— R/W CENTER LINE
- ..... FALSE CALL LINE
- - - - ACCESS CONTROL LINE



CALCULATED RIGHT OF WAY & ACCESS CONTROL POINTS

POINT ID	LDP NORTHING	LDP EASTING	STATION	OFFSET	DESCRIPTION
2000	168419.119	375493.228	"CR" 21+088.982	12.000 m, RT	FALSE CALL POINT
2001	168435.809	375488.665	"CR" 21+106.047	9.144 m, RT	ACCESS CONTROL POINT
2002	168403.185	375472.148	"CR" 21+075.256	10.581 m, LT	ACCESS CONTROL POINT
2003	168411.767	375472.722	"CR" 21+083.737	9.144 m, LT	ACCESS CONTROL POINT
2004	168421.621	375471.721	"CR" 21+093.657	9.144 m, LT	ACCESS CONTROL POINT

REGISTERED  
 PROFESSIONAL  
 LAND SURVEYOR  
*Marshall R. Wagstaff*  
 OREGON  
 JANUARY 9, 2001  
 MARSHALL R. WAGSTAFF  
 49476LS  
 EXPIRES: JUNE 30, 2004

**METRIC SURVEY**  
 1 METER = 3937 U.S. FEET / 1200  
 TO CONVERT A METRIC DISTANCE DIVIDE BY 0.30480061

OREGON DEPARTMENT OF TRANSPORTATION  
 RIGHT-OF-WAY NETWORK MONUMENTATION MAP

WINSTON - INTERSTATE 5  
 COOS BAY - ROSEBURG HWY. (42)  
 DOUGLAS COUNTY

ODOT, REGION 3  
 3500 STEWART PARKWAY, SUITE 140  
 ROSEBURG, OREGON 97470

JUNE 4, 2004  
 CONTRACT No. C12867

SHEET 4 OF 4