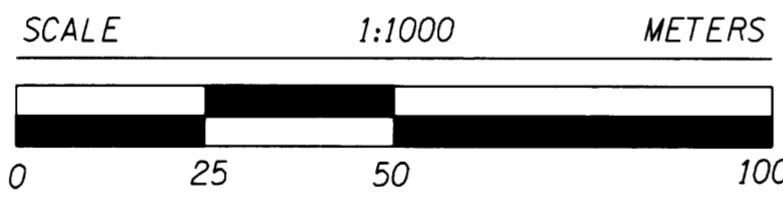
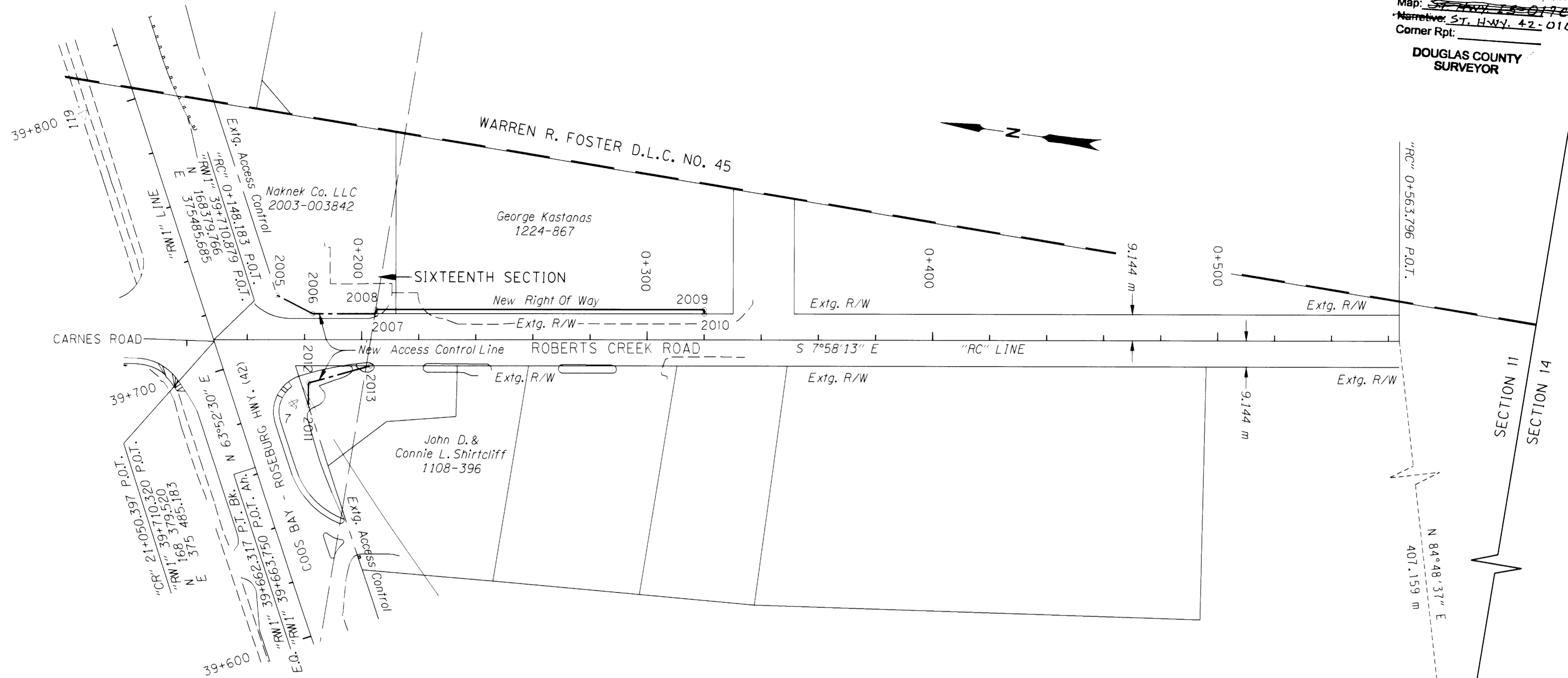


FILED
 Date: 6/16/2004 By: JP
 This survey consists of: 4 PAGES
 Map: ~~ST. HWY. 42-017C~~
 Narrative: ST. HWY. 42-010C
 Corner Rpt:

DOUGLAS COUNTY
 SURVEYOR



LEGEND

- △ FOUND NETWORK POINT
- ⊗ DESTROYED NETWORK POINT
- FOUND MONUMENT
- ◊ CALCULATED POINT
- EDGE OF PAVEMENT
- ▄▄▄▄ GUARDRAIL
- +—+—+—+—+—+ R/W CENTER LINE
- NEW RIGHT OF WAY
- - - ACCESS CONTROL LINE

CALCULATED RIGHT OF WAY & ACCESS CONTROL POINTS

POINT ID	LDP NORTHING	LDP EASTING	STATION	OFFSET	DESCRIPTION
2005	168360.037	375504.295	"RC" 0+170.302	15.695 m, LT	ACCESS CONTROL POINT
2006	168346.715	375499.546	"RC" 0+182.837	9.144 m, LT	ACCESS CONTROL POINT
2007	168324.766	375502.619	"RC" 0+205.000	9.144 m, LT	ACCESS CONTROL POINT
2008	168324.978	375504.128	"RC" 0+205.000	10.668 m, LT	R/W POINT
2009	168211.088	375520.074	"RC" 0+320.000	10.668 m, LT	R/W POINT
2010	168210.877	375518.565	"RC" 0+320.000	9.144 m, LT	R/W POINT
2011	168343.681	375467.484	"RC" 0+181.396	23.029 m, RT	ACCESS CONTROL POINT
2012	168344.773	375475.284	"RC" 0+181.396	15.153 m, RT	ACCESS CONTROL POINT
2013	168324.212	375484.230	"RC" 0+202.999	9.144 m, RT	ACCESS CONTROL POINT

REGISTERED
 PROFESSIONAL
 LAND SURVEYOR
Marshall R. Wagstaff
 OREGON
 JANUARY 9, 2001
 MARSHALL R. WAGSTAFF
 49476LS
 EXPIRES: JUNE 30, 2004

METRIC SURVEY
 1 METER = 3937 U.S. FEET / 1200
 TO CONVERT A METRIC DISTANCE DIVIDE BY 0.30480061

OREGON DEPARTMENT OF TRANSPORTATION
 RIGHT-OF-WAY NETWORK MONUMENTATION MAP
 WINSTON - INTERSTATE 5
 COOS BAY - ROSEBURG HWY. (42)
 DOUGLAS COUNTY
 ODOT, REGION 3
 3500 STEWART PARKWAY, SUITE 140
 ROSEBURG, OREGON 97470
 JUNE 4, 2004
 CONTRACT No. C12867
 SHEET 3 OF 4