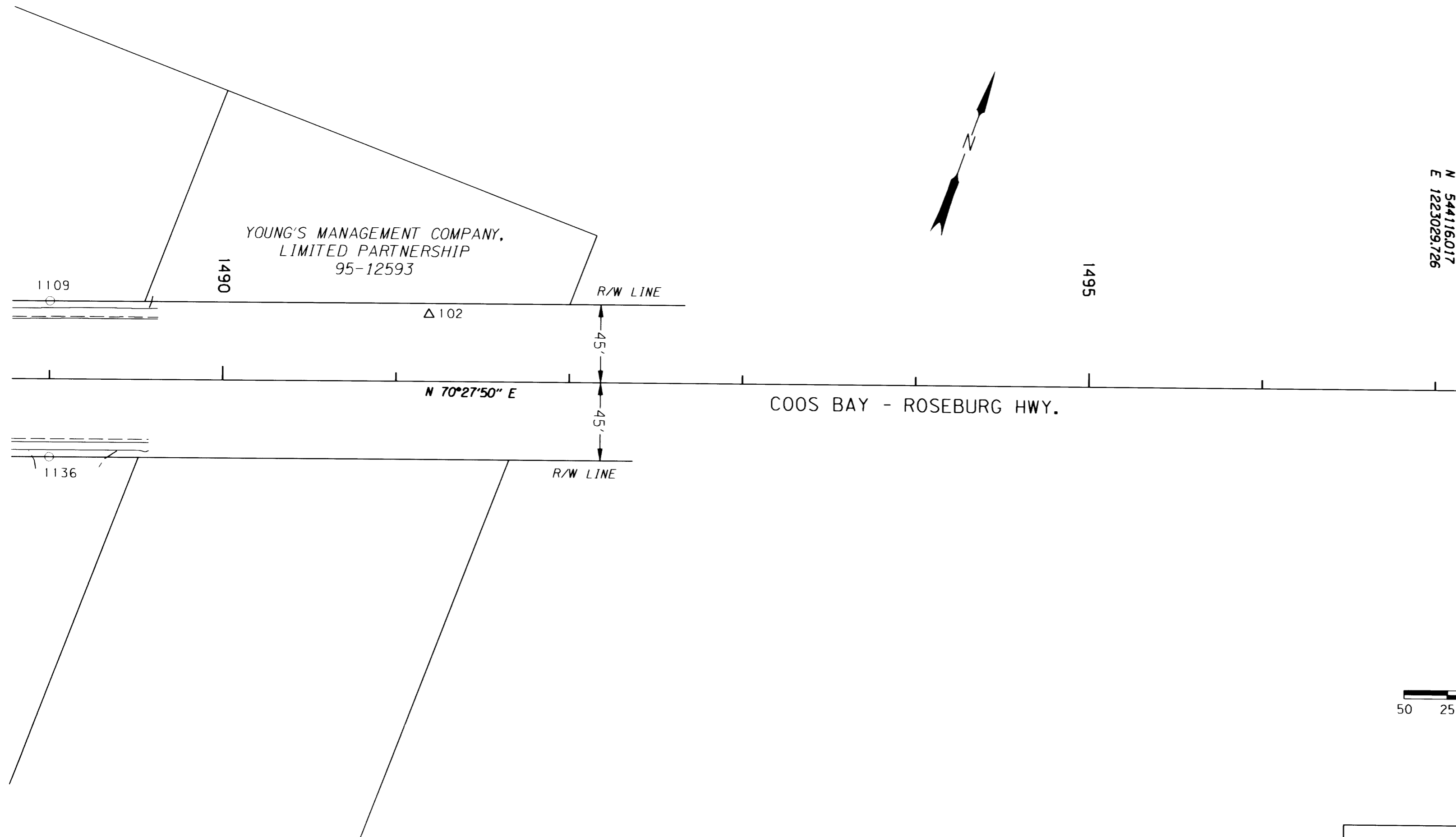
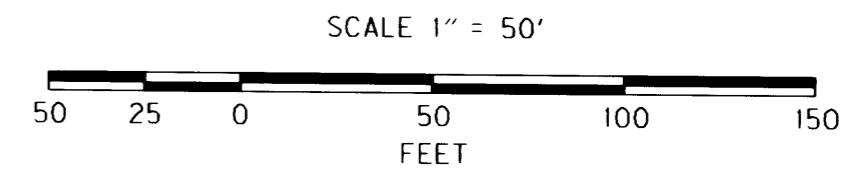
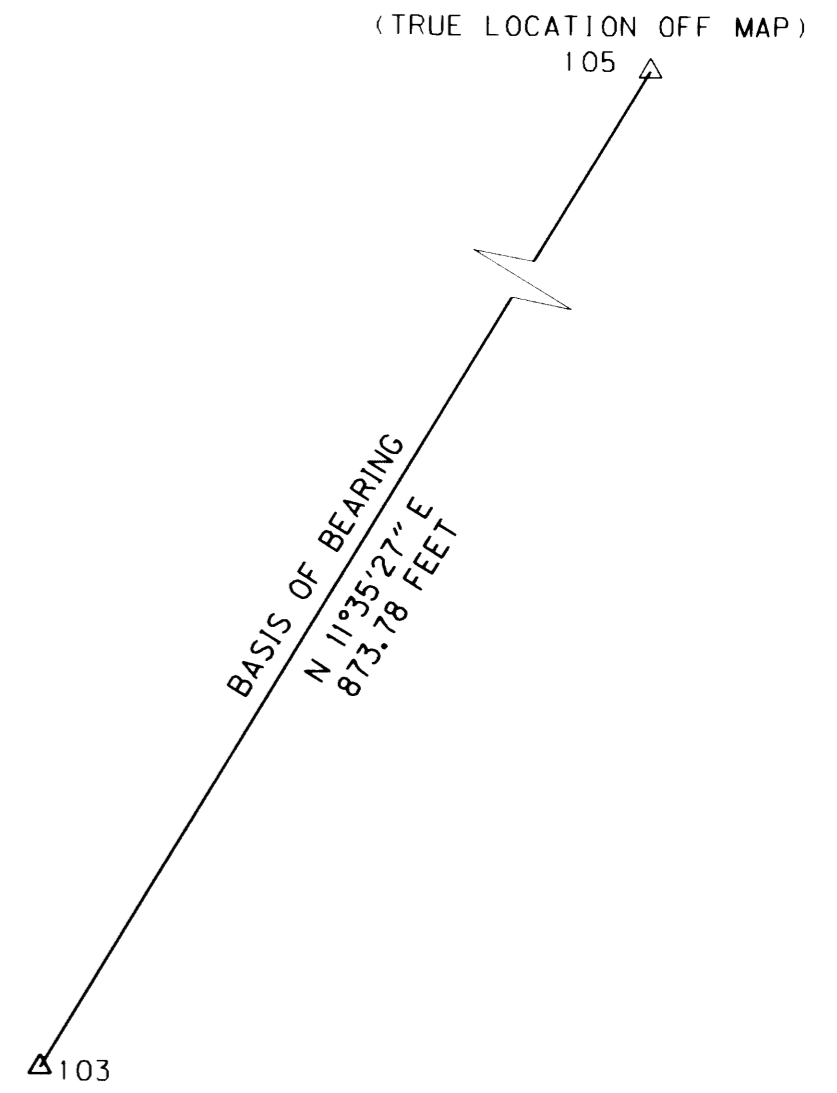


NW 1/4 & NE 1/4 SEC. 21, T. 28 S., R. 6 W., W.M.

FILED
 Date: 3/3/2004 By: JP
 This survey consists of: 7 SHEETS
 Map: ST Hwy. 42-009G
 Narrative: _____
 Corner Rpt: _____
 DOUGLAS COUNTY
 SURVEYOR



1497+1366 P.O.T.
 N 544116017
 E 1223029726



LEGEND	
▲	SET NETWORK POINT
△	FOUND NETWORK POINT
○	FOUND MONUMENT

REGISTERED
 PROFESSIONAL
 LAND SURVEYOR
Christine V. Blevins
 OREGON
 JULY 19, 1994
 CHRISTINE V. BLEVINS
 2669
 EXPIRES: DEC. 31, 2005

OREGON DEPARTMENT OF TRANSPORTATION
 HORIZONTAL CONTROL, RECOVERY AND RETRACEMENT MAP
 OR42: LOOKINGGLASS CR. - GLENHART AVE.
 COOS BAY-ROSEBURG HIGHWAY (42)
 DOUGLAS COUNTY
 FEBRUARY 25, 2004 FOR ODOT REGION 3
 3500 NW STEWART PKWY., ROSEBURG, OR 97470
 SHEET 7 OF 7

ST. HWY. 42-009G