

COUNTY SURVEYORS FILE DATA  
DO NOT REMOVE FROM OFFICE

SW 1/4, NW 1/4, & NE 1/4 SEC. 15, SE 1/4 SEC. 10, AND SW 1/4 SEC. 11,  
T. 28 S., R. 6 W., W. M.

FILED  
Date: 4-29-2002 By: J.C.  
This survey consists of:  
Map: ST HWY 42-007A  
Narrative: \_\_\_\_\_  
Corner Rpt: \_\_\_\_\_

DOUGLAS COUNTY  
SURVEYOR

"RW1"  
R 873.188 m C.L.  
TΔ 8°48'15"  
Ts 128.225 m

"RW1"  
121.920 m Sp.  
S 4°00'00"  
A 326.281

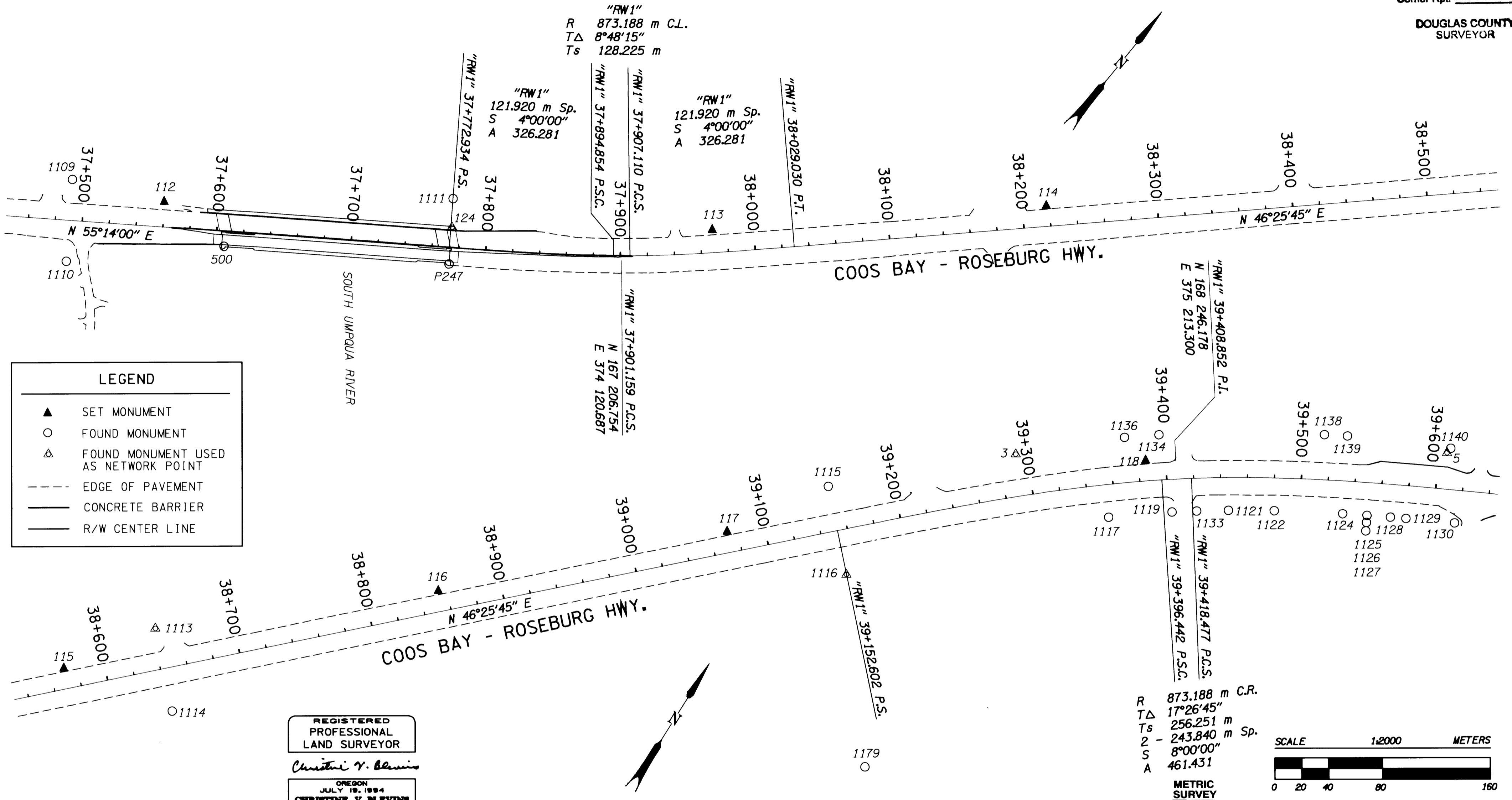
"RW1"  
121.920 m Sp.  
S 4°00'00"  
A 326.281

"RW1" 37+772.934 P.S.  
"RW1" 37+894.854 P.S.C.  
"RW1" 37+907.110 P.C.S.

"RW1" 38+029.030 P.T.

"RW1" 39+408.852 P.T.  
N 168 246.178  
E 375 213.300

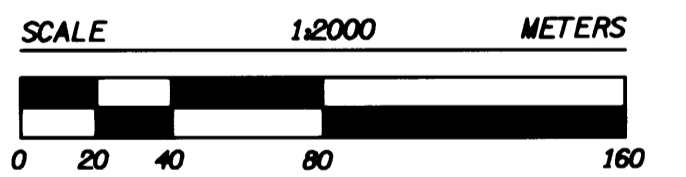
R 873.188 m C.R.  
TΔ 17°26'45"  
Ts 256.251 m  
2 - 243.840 m Sp.  
S 8°00'00"  
A 461.431



**LEGEND**

- ▲ SET MONUMENT
- FOUND MONUMENT
- △ FOUND MONUMENT USED AS NETWORK POINT
- - - EDGE OF PAVEMENT
- CONCRETE BARRIER
- R/W CENTER LINE

REGISTERED  
PROFESSIONAL  
LAND SURVEYOR  
*Christine V. Blewins*  
OREGON  
JULY 19, 1994  
CHRISTINE V. BLEWINS  
2669  
EXPIRES: DEC. 31, 2003



METRIC SURVEY  
1 METER = 3937 U.S. FEET / 1200  
TO CONVERT A METRIC DISTANCE DIVIDE BY 0.30480061

POINT ID	LDP NORTHING	LDP EASTING	DESCRIPTION
3	168187.665	375109.689	FOUND 38 mm ALUM. CAP STAMPED "ODOT HORIZ. CONTROL 3" FLUSH WITH SURFACE IN GOOD CONDITION. (REF. SURVEY *M129-21)
5	168358.028	375380.860	FOUND 38 mm ALUM. CAP STAMPED "ODOT HORIZ. CONTROL 5" FLUSH WITH SURFACE IN GOOD CONDITION. (REF. SURVEY *M129-21)
112	167028.251	373828.863	SET 16 mm X 762 mm IRON REBAR WITH A 38 mm BRASS CAP STAMPED "ODOT CONTROL 112" 70 mm BELOW SURFACE.
113	167267.186	374158.006	SET 16 mm X 762 mm IRON REBAR WITH A 38 mm BRASS CAP STAMPED "ODOT CONTROL 113" 50 mm BELOW SURFACE.
114	167437.068	374339.329	SET 16 mm X 762 mm IRON REBAR WITH A 38 mm BRASS CAP STAMPED "ODOT CONTROL 114" 50 mm BELOW SURFACE.
115	167679.836	374594.574	SET 16 mm X 762 mm IRON REBAR WITH A 38 mm BRASS CAP STAMPED "ODOT CONTROL 115" 50 mm BELOW SURFACE.

OREGON DEPARTMENT OF TRANSPORTATION  
HORIZONTAL CONTROL, RECOVERY,  
AND RETRACEMENT MAP  
WINSTON - INTERSTATE 5  
COOS BAY - ROSEBURG HWY.  
DOUGLAS COUNTY  
3500 STEWART PARKWAY, SUITE 140  
ROSEBURG, OREGON 97470  
APRIL 23, 2002  
PROJECT KEY #09841  
SHEET 5 OF 8

ST. HWY. 42-007E