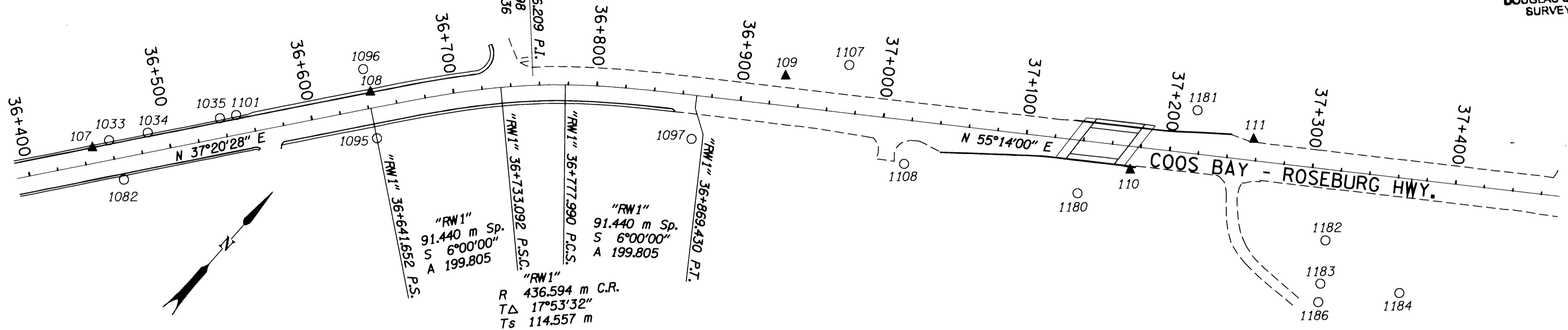


COUNTY SURVEYORS FILE DATA
DO NOT REMOVE FROM OFFICE

NE 1/4 SEC. 21, SE 1/4 SEC. 16, AND SW 1/4 SEC. 15,
T. 28 S., R. 6 W., W. M.

FILED
Date: 4-29-2002 By: SC
This survey consists of:
Map: ST HWY 42-007A-H
Narrative:
Corner Rpt:

DOUGLAS COUNTY
SURVEYOR



POINT ID	LDP NORTHING	LDP EASTING	DESCRIPTION
107	166314.390	372982.131	SET 29 mm BRASS DISK IN CONC. SIDEWALK STAMPED "ODOT CONTROL 107".
108	166471.007	373101.199	SET 29 mm BRASS DISK IN CONC. SIDEWALK STAMPED "ODOT CONTROL 108".
109	166670.197	373309.796	SET 16 mm X 762 mm IRON REBAR WITH A 38 mm BRASS CAP STAMPED "ODOT CONTROL 109" 50 mm BELOW SURFACE.
110	166779.635	373532.310	SET 16 mm X 762 mm IRON REBAR WITH A 38 mm BRASS CAP STAMPED "ODOT CONTROL 110".
111	166852.472	373582.509	SET 16 mm X 762 mm IRON REBAR WITH A 38 mm BRASS CAP STAMPED "ODOT CONTROL 111" 50 mm BELOW SURFACE.
1033	166325.118	372987.920	FOUND 1 1/2" ALUM. CAP SET FLUSH WITH SURFACE IN FAIR CONDITION. STAMP HAS BEEN DESTROYED.

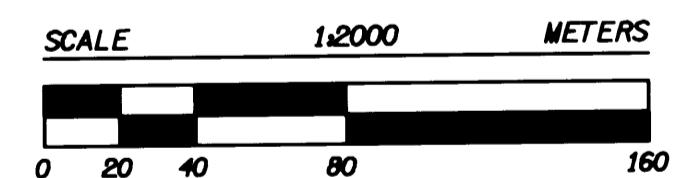
○ 1178

1034	166346.882	373004.542	FOUND 1 1/4" YELLOW PLASTIC CAP STAMPED "ARTMAN RLS2268" FLUSH WITH ASPHALT CONC. IN GOOD CONDITION. (REF. SURVEY *M117-40)
1035	166387.545	373035.575	FOUND 1 1/2" ALUM. CAP STAMPED "OREG. STATE HWY. DIV." 110 mm BELOW SURFACE IN GOOD CONDITION.
1082	166311.450	373013.828	FOUND 5/8" IRON REBAR 100 mm BELOW SURFACE IN GOOD CONDITION. (REF. SURVEY *M73-45)
1095	166449.085	373126.615	FOUND 1 1/2" ALUM. CAP STAMPED "OREG. STATE HWY. DIV. 1202+15.48 71.09" 130 mm BELOW SURFACE IN FAIR CONDITION.
1096	166478.914	373087.470	FOUND 5/8" IRON REBAR WITH 1 1/4" YELLOW PLASTIC CAP STAMPED "I.E. ENG." 140 mm ABOVE SURFACE IN GOOD CONDITION.
1097	166593.307	373290.519	FOUND 5/8" IRON ROD WITH A 1 1/2" ALUM. CAP STAMPED "OREG. STATE HWY. DIV. 1209+62.56 100". PADDLE BOARD NEARBY STA. 1209+62.56, 100 FT. RT.
1101	166396.629	373042.504	FOUND 1 1/4" PLASTIC CAP FLUSH WITH ASPHALT CONC. IN GOOD CONDITION. (MAP *M117-40)
1107	166704.518	373338.476	FOUND 1 1/2" ALUM. CAP STAMPED "OREG. STATE HWY. DEPT. 1213+00 110.0" 300 mm BELOW SURFACE IN GOOD CONDITION. POST AND PADDLE NEARBY 1213+00, 110.0 FT. LT.
1108	166678.049	373412.531	FOUND 5/8" IRON REBAR FLUSH WITH SURFACE IN GOOD CONDITION. POST AND PADDLE BOARD NEARBY R/W 1214+50, 100 FT. RT.
1178	166377.410	373482.233	FOUND GALVANIZED IRON PIPE WITH 2 5/8" BRASS DISK STAMPED "COUNTY SURVEYORS OFFICE 1962 T28S R6W S16 S15 S21 S22". 400 mm ABOVE SURFACE IN GOOD CONDITION.
1180	166742.524	373516.157	FOUND 5/8" IRON ROD WITH A 1 1/2" ALUM. CAP STAMPED "STATE HWY. R/W STATION 1218+50 120" RIGHT. 380 mm BELOW SURFACE IN GOOD CONDITION.
1181	166841.016	373540.461	FOUND 5/8" IRON ROD WITH A 1 1/2" ALUM. CAP STAMPED "OREG. STATE HWY. DIV." FLUSH WITH SURFACE IN GOOD CONDITION. PADDLE BOARD NEARBY MARKED "STA. 1221+00 100" LEFT.
1182	166832.073	373666.794	FOUND 1 1/4" O.D. IRON PIPE BENT TO THE EAST IN POOR CONDITION. TIED WHERE IT ENTERS GROUND. (REF. WINSTON HOMES, VOL. 8, PG. 19)
1183	166807.264	373684.046	FOUND 1 1/4" O.D. IRON PIPE, 100 mm BELOW SURFACE IN FAIR CONDITION. (REF. WINSTON HOMES, VOL. 8, PG. 19)
1184	166838.684	373729.485	FOUND 1 1/4" O.D. IRON PIPE, 70 mm BELOW SURFACE IN GOOD CONDITION. (REF. WINSTON HOMES, VOL. 8, PG. 19)
1185	166798.298	373757.920	FOUND 1 1/4" O.D. IRON PIPE, 100 mm BELOW SURFACE IN GOOD CONDITION. SLIGHTLY TILTED NORTH EAST. (REF. WINSTON HOMES, VOL. 8, PG. 19)
1186	166796.653	373691.445	FOUND 1 1/4" O.D. IRON PIPE, 200 mm BELOW SURFACE IN GOOD CONDITION. (REF. WINSTON HOMES, VOL. 8, PG. 19)

LEGEND

- ▲ SET MONUMENT
- FOUND MONUMENT
- ==== CURB/SIDEWALK
- EDGE OF PAVEMENT
- CONCRETE BARRIER
- R/W CENTER LINE

REGISTERED PROFESSIONAL LAND SURVEYOR
Christine V. Blavin
OREGON JULY 19, 1994
CHRISTINE V. BLAVIN
2009
EXPIRES: DEC. 31, 2003



1 METER = 3937 U.S. FEET / 1200
TO CONVERT A METRIC DISTANCE DIVIDE BY 0.30480061

OREGON DEPARTMENT OF TRANSPORTATION
HORIZONTAL CONTROL, RECOVERY,
AND RETRACEMENT MAP
WINSTON - INTERSTATE 5
COOS BAY - ROSEBURG HWY.
DOUGLAS COUNTY
3500 STEWART PARKWAY, SUITE 140
ROSEBURG, OREGON 97470

APRIL 23, 2002
PROJECT KEY #09841

SHEET 4 OF 8

ST. HWY. 42-007D