

SURVEY NARRATIVE

THE PURPOSE OF THIS METRIC SURVEY WAS TO ESTABLISH HORIZONTAL CONTROL FOR AN OREGON DEPARTMENT OF TRANSPORTATION (ODOT) PROJECT CALLED "WINSTON - INTERSTATE 5". THE CONTROL NETWORK WAS CONDUCTED BY AN ODOT SURVEY CREW FROM ROSEBURG BETWEEN DECEMBER 11, 2000 TO DECEMBER 18, 2000. THE ORIGINAL FIELD NOTES ARE ARCHIVED IN SALEM AS BOOK #3750.

THE BASIS OF BEARING OF N 53°34'46" E COMES FROM TWO FOUND RIGHT OF WAY MONUMENTS ALONG THE COOS BAY-ROSEBURG HIGHWAY 42 AT ENGLISH STATION 1267+80, 100 FEET LEFT (POINT #1113), AND ENGLISH STATION 1284+54.02 P.S., 110 FEET RIGHT (POINT #1116). REFER TO ODOT DRAWING NO. 9B-7-5. THESE POINTS ARE LOCATED ALONG THE HIGHWAY BETWEEN S.W. JACKIE STREET AND S.W. LANDERS AVE. 1.65 MILES NORTHEAST OF WINSTON.

THE COORDINATES FOR THIS SURVEY ARE ON A LOCAL DATUM PLANE REPRESENTING TRUE GROUND DISTANCES AND WERE DERIVED FROM THE OREGON STATE PLANE COORDINATE SYSTEM OF 1927, SOUTH ZONE. TO CONVERT METRIC COORDINATES AND DISTANCES TO ENGLISH, DIVIDE BY 0.30480061 (OR, 1 METER = 3937 US SURVEY FEET / 1200).

A LEICA "TCA 1800" TOTAL STATION (SERIAL #418939) WAS USED TO RUN THE NETWORK AND TIE EXISTING MONUMENTS. THE LEICA TCA 1800 HAS THE FOLLOWING ACCURACY: STANDARD ANGULAR ERROR OF +/- 1 SECOND, AND A STANDARD DISTANCE ERROR OF +/- 2 MM, +/- 2 PPM.

THE NETWORK WAS ADJUSTED USING A LEAST SQUARES ROUTINE WITH LISCAD SOFTWARE. THIS ADJUSTMENT PRODUCED ANGULAR AND DISTANCE RESIDUALS (THE AMOUNT THE FIELD OBSERVED MEASUREMENTS WERE CHANGED DUE TO THE ADJUSTMENT): ANGULAR RESIDUALS: 94% WERE WITHIN 3 SECONDS, AND 100% WERE WITHIN 9 SECONDS. DISTANCE RESIDUALS: 100% WERE WITHIN 4 MM. THERE IS A 95% PROBABILITY THAT THE FINAL POSITIONS OF THE NETWORK POINTS ARE WITHIN THE ERROR ELLIPSES AS SHOWN ON THE "CONFIDENCE LEVEL LIMITS" TABLE. (NOTE: SEE SHEET 3 FOR LIST OF REFERENCED SURVEYS.)

ALIGNMENT RETRACEMENT NARRATIVE

ALIGNMENT "RW1" (HIGHWAY 42 FROM DILLARD END TO RAILROAD)

REFERRING TO ODOT DRAWING NO. 9B-7-5 THE ALIGNMENT WAS RETRACED USING A BEST FIT ANALYSIS OF TIED MONUMENTS. THE RECORD RADIUS AND SPIRAL LENGTHS WERE USED. THE RECORD ENGLISH STATION AT 1178+91.51 WAS HELD FOR STATIONING AS METRIC STATION 35+933.404.

ALIGNMENT "RW2" (HIGHWAY 42 FROM RAILROAD TO FREEWAY)

REFERRING TO ODOT DRAWING NO. 9B-7-5 THE ALIGNMENT WAS RETRACED USING A BEST FIT OF THREE TIED MONUMENTS (POINTS 1174, 1175, 1176). THE RECORD STATION AT POINT 1176 OF "A"1300+20.00 WAS HELD FOR STATIONING AS METRIC STATION 39+630.175.

ALIGNMENT "RW3" (HIGHWAY 42 FROM WINSTON INTERSECTION TO THE WEST)

REFERRING TO ODOT DRAWING NOS. 9B-7-5 AND 6B-28-22 (PART 2 OF 2) THE ALIGNMENT TANGENT WAS RETRACED BY HOLDING POINT 1040 ON THE EAST END, AND HOLDING A SPLIT OF POINTS 1009 AND 1036 FOR THE WEST END. FOR STATIONING THE ENGLISH STATION 1497+13.66 WAS HELD AS METRIC STATION 45+632.815.

ALIGNMENT "OS1" (OAKLAND - SHADY HIGHWAY)

REFERRING TO ODOT DRAWING NO. 9B-7-5 THE RECORD DATA WAS HELD FOR RETRACING THIS ALIGNMENT. THE RECORD OFFSET TO POINT 1173 WAS HELD. THE ENGLISH STATION AT EQUATION 1315+11.83 POT BK. = 1315+00.00 POT AH. (20 FT. LT.) WAS HELD FOR STATIONING AS METRIC STATION 40+081.280.

ALIGNMENT "OS2" (OAKLAND - SHADY HIGHWAY "T" INTERSECTION)

REFERRING TO ODOT DRAWING NO. 1A-22-13 THE RECORD DATA FOR THIS ALIGNMENT, INCLUDING THE RADIUS AND SPIRAL LENGTHS, WAS USED TO RETRACE IT. SOME ADJUSTMENTS AT THE TERMINI WERE DONE TO MATCH INTO ALIGNMENTS "RW2" AND "OS1". THE ENGLISH STATION 1327+24.69 POT WAS HELD FOR STATIONING AS METRIC STATION 40+454.566.

CONFIDENCE LEVEL LIMITS

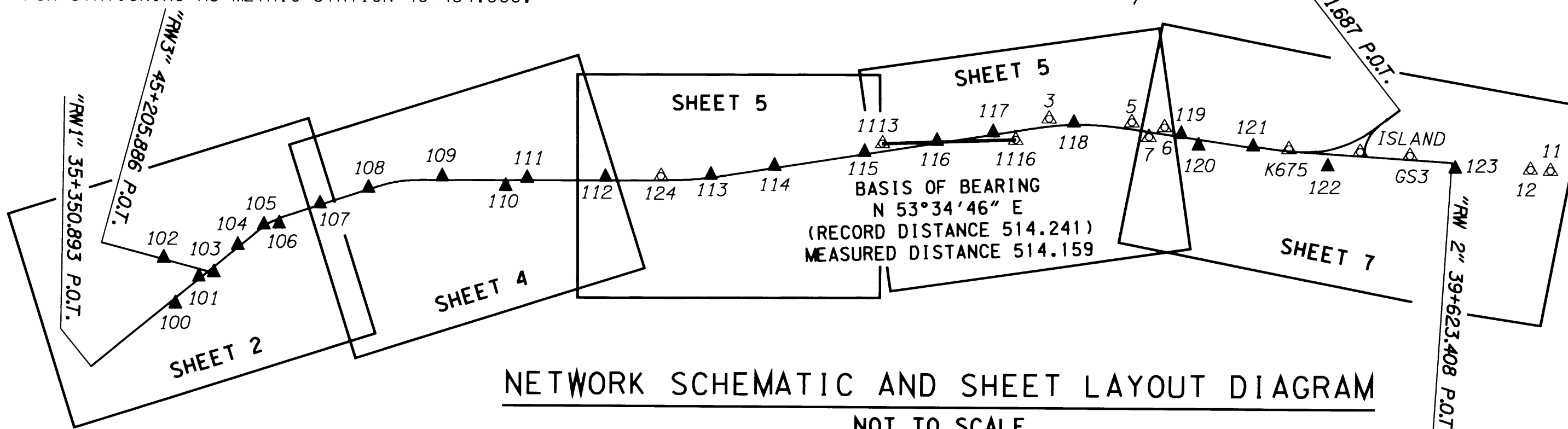
POINT	SEMI MAJOR	SEMI MINOR	ORIENTATION
117	0.001 m	0.001 m	S 42°27'02" E
116	0.002 m	0.001 m	S 39°55'57" E
115	0.002 m	0.001 m	S 41°07'33" E
114	0.007 m	0.001 m	S 44°25'45" E
113	0.010 m	0.001 m	S 44°00'03" E
3	0.002 m	0.001 m	S 50°16'10" E
124	0.014 m	0.002 m	S 42°27'37" E
112	0.019 m	0.002 m	S 40°01'02" E
111	0.026 m	0.002 m	S 38°30'55" E
110	0.028 m	0.002 m	S 39°48'39" E
108	0.043 m	0.002 m	S 38°18'02" E
109	0.035 m	0.002 m	S 37°08'54" E
107	0.048 m	0.003 m	S 40°02'01" E
106	0.053 m	0.003 m	S 42°09'41" E
105	0.055 m	0.003 m	S 42°06'42" E
104	0.059 m	0.004 m	S 44°19'50" E
103	0.063 m	0.006 m	S 47°20'11" E
101	0.065 m	0.006 m	S 47°33'59" E
100	0.069 m	0.008 m	S 60°19'58" E
102	0.069 m	0.005 m	S 44°34'45" E
118	0.003 m	0.001 m	S 43°05'02" E
5	0.006 m	0.001 m	S 37°14'57" E
7	0.007 m	0.001 m	S 30°25'17" E
119	0.008 m	0.001 m	S 32°57'23" E
121	0.013 m	0.001 m	S 30°00'00" E
K675	0.015 m	0.002 m	S 29°29'20" E
122	0.017 m	0.002 m	S 27°04'02" E
120	0.009 m	0.002 m	S 29°02'38" E
6	0.008 m	0.001 m	S 34°39'14" E
ISLAND	0.019 m	0.002 m	S 30°24'31" E
GS3	0.023 m	0.002 m	S 30°36'05" E
123	0.026 m	0.002 m	S 29°23'06" E
12	0.033 m	0.002 m	S 30°04'59" E
11	0.035 m	0.002 m	S 30°10'25" E

NETWORK OBSERVATIONS

AT	TO
1113	1116, 117, 116, 115, 114, 113
115	1116, 3, 117, 116, 114, 113, 1113
114	3, 116, 1113, 115, 113, 124
113	1113, 115, 114, 124, 112, 111
124	114, 113, 112, 111, 110, 108
112	113, 124, 111, 110, 109, 108
111	113, 124, 112, 110, 109, 108
110	124, 112, 111, 109, 108
109	112, 111, 110, 108, 107
108	124, 112, 111, 110, 109, 107, 106
107	109, 108, 106, 105
106	108, 107, 105, 104
105	107, 106, 104, 103, 101, 100
104	106, 105, 103, 101, 100
103	105, 104, 102, 101, 100
101	105, 104, 103, 102, 100
100	105, 104, 103, 101
102	101, 103
116	1113, 115, 1116, 117, 3, 118
117	1113, 115, 116, 1116, 3, 118
1116	1113, 115, 116, 117, 3
3	115, 114, 116, 117, 1116, 118, 5, 7, 119, 115, 121, K675, 122
118	116, 117, 3, 5, 7, 119, 121, K675, 122, 116, 120
5	3, 118, 6, 7, 120, 121, 122
6	5, 7, 119, 120, 121, 122
7	3, 118, 5, 6, 119, 120
119	3, 118, 6, 7, 120, 121, 122, 3, 5
120	118, 5, 6, 119, 121, 122
121	3, 118, 5, 6, 119, 120, 122, K675
K675	3, 118, 121, 122, ISLAND, GS3, 123
ISLAND	K675, 122, 123
GS3	122, 123, 12, K675
123	K675, 122, ISLAND, GS3, 12, 11
12	122, GS3, 123, 11
11	123, 12
122	3, K675, ISLAND, GS3, 123, 12, 3, 118, 5, 6, 119, 120, 121

LEGEND

- ▲ SET MONUMENT
- △ FOUND MONUMENT USED AS NETWORK POINT
- R/W CENTER LINE



NETWORK SCHEMATIC AND SHEET LAYOUT DIAGRAM

NOT TO SCALE



1 METER = 3937 U.S. FEET / 1200
 TO CONVERT A METRIC DISTANCE DIVIDE BY 0.30480061

REGISTERED
 PROFESSIONAL
 LAND SURVEYOR

Christine V. Blewins
 OREGON
 JULY 18, 1994
 CHRISTINE V. BLEWINS
 2669

EXPIRES: DEC. 31, 2003

OREGON DEPARTMENT OF TRANSPORTATION
 HORIZONTAL CONTROL, RECOVERY,
 AND RETRACEMENT MAP
 WINSTON - INTERSTATE 5
 COOS BAY - ROSEBURG HWY.
 DOUGLAS COUNTY
 3500 STEWART PARKWAY, SUITE 140
 ROSEBURG, OREGON 97470

COUNTY SURVEYORS FILE DATA
DO NOT REMOVE FROM OFFICE

FILED
 Date: 4-29-2002 By: DC
 This survey consists of:
 Map: St Hwy 42-007A-H
 Narrative: _____
 Corner Rpt: _____
DOUGLAS COUNTY
SURVEYOR

POINT ID	LDP NORTHING	LDP EASTING	DESCRIPTION
1036	165751.033	372551.069	FOUND 1 1/2" ALUM. CAP STAMPED "OREG. STATE HWY. DIV. R/W 1489+00 45.0".
1038	165784.873	372646.452	FOUND 1 1/4" YELLOW PLASTIC CAP FLUSH WITH ASPHALT CONC. IN GOOD CONDITION. (REF. SURVEY #M112-16)
1040	165807.105	372709.075	FOUND 1 1/2" ALUM. CAP STAMPED "OREG. STATE HWY. DIV. 1494+50 45.0" FLUSH WITH ASPHALT CONC. IN GOOD CONDITION.
1041	165808.747	372713.683	FOUND 5/8" IRON REBAR 50 mm BELOW SURFACE IN GOOD CONDITION. (REF. SURVEY M48-19)
1042	165812.854	372725.252	FOUND 2" ALUM. CAP STAMPED "AA SURV. SERV." FLUSH WITH ASPHALT CONC. IN GOOD CONDITION. (REF. SURVEY #M89-61)
1043	165790.126	372749.305	FOUND 2" ALUM. CAP STAMPED "AA SURV. SERV." FLUSH WITH ASPHALT CONC. IN GOOD CONDITION. (REF. SURVEY #M89-61)
1044	165768.217	372742.927	FOUND 2" ALUM. CAP STAMPED "AA SURV. SERV." 50 mm BELOW SURFACE IN GOOD CONDITION. (REF. SURVEY #M89-61)
1046	165714.021	372727.214	FOUND 1 1/4" PLASTIC CAP STAMPED "AA SURVEYING INC." FLUSH WITH ASPHALT CONC. IN GOOD CONDITION. (REF. SURVEY #M124-52)
1047	165673.636	372715.482	FOUND 1 1/4" PLASTIC CAP STAMPED "AA SURVEYING INC." 50 mm BELOW SURFACE IN FAIR CONDITION. (REF. SURVEY #M124-52)
1049	165640.545	372705.655	FOUND 5/8" IRON ROD FLUSH WITH SURFACE IN FAIR CONDITION. LEANING TO N.E. (REF. SURVEY #M46-6)
1050	165560.693	372682.363	FOUND 1 1/2" ALUM. CAP STAMPED "STATE HWY. DIV. 45.0" 30 mm BELOW SURFACE IN GOOD CONDITION.
1051	165649.514	372736.853	FOUND 1 1/4" PLASTIC CAP STAMPED "BENTZ SUR. INC." FLUSH WITH ASPHALT CONC. IN GOOD CONDITION. (REF. SURVEY #M104-39)
1052	165670.344	372742.923	FOUND 1 1/4" YELLOW PLASTIC CAP STAMPED "BENTZ SUR. INC." FLUSH WITH ASPHALT CONC. IN GOOD CONDITION. (REF. SURVEY #M104-39)
1054	165697.752	372750.933	FOUND 1 1/4" PLASTIC CAP FLUSH WITH ASPHALT CONC. IN GOOD CONDITION. (REF. SURVEY #M104-39)
1055	165715.782	372756.156	FOUND 5/8" IRON ROD FLUSH WITH ASPHALT CONC. IN GOOD CONDITION.
1057	165763.386	372769.979	FOUND 5/8" IRON ROD 30 mm BELOW PAVEMENT IN GOOD CONDITION. (REF. SURVEY #M93-22)
1058	165772.453	372772.740	FOUND 1 1/2" ALUM. CAP STAMPED "OREG. STATE HWY. DIV. 1176+50 45.0" 20 mm BELOW SURFACE IN GOOD CONDITION.
1061	165781.662	372775.388	FOUND 5/8" IRON ROD 40 mm ABOVE SURFACE IN GOOD CONDITION. (REF. SURVEY #M93-22)
1062	165798.872	372780.454	FOUND 1 1/2" ALUM. CAP STAMPED "OREG. STATE HWY. DEPT." 20 mm BELOW ASPHALT CONC. IN GOOD CONDITION.
1064	165847.728	372794.726	FOUND 1 1/2" ALUM. CAP STAMPED "OREG. STATE HWY. DEPT." 30 mm BELOW SURFACE IN GOOD CONDITION.
1077	166159.485	372899.649	FOUND 5/8" IRON ROD FLUSH IN ASPHALT CONC. IN GOOD CONDITION WITH PLASTIC CAP DESTROYED. (REF. SURVEY 1993-0104A)
1078	166187.157	372919.501	FOUND 5/8" IRON ROD WITH A 1 1/4" YELLOW PLASTIC CAP STAMPED "AA SURVEYING INC." 40 mm ABOVE SURFACE IN GOOD CONDITION. (REF. SURVEY 1994-0058A)
1079	166197.531	372926.974	FOUND 5/8" IRON REBAR 50 mm ABOVE SURFACE IN GOOD CONDITION.
1080	166199.552	372928.481	FOUND 1 1/2" ALUM. CAP STAMPED "OREG. STATE HWY. DIV. 1191+70.29 50.0". SET FLUSH IN ASPHALT CONC. IN GOOD CONDITION.
1081	166208.012	372934.878	FOUND 5/8" IRON REBAR 50 mm BELOW SURFACE IN GOOD CONDITION. (REF. SURVEY #M73-45)
1085	165852.403	372761.177	FOUND TACK IN LEAD IN CONC. CURB FLUSH WITH SURFACE IN GOOD CONDITION. (EQUATION STATION 1497+13.66 = 1178+91.51, 64.96 FT. LT.)
1086	165843.021	372793.351	FOUND 5/8" IRON ROD 70 mm BELOW SURFACE IN GOOD CONDITION.
1087	165851.429	372793.064	FOUND TACK IN LEAD IN CONC. CURB IN GOOD CONDITION.
1090	166139.901	372855.274	FOUND 5/8" IRON REBAR 10 mm BELOW SURFACE IN GOOD CONDITION. STA. 1188+77.23 P.S.C., 45.00 FT. LT.
1093	166141.958	372887.048	FOUND 1 1/2" ALUM. CAP STAMPED "OREG. STATE HWY. DIV. 1189+30.29 PCS 45.0 RT." 100 mm BELOW SURFACE IN GOOD CONDITION.
1100	166238.959	372922.118	FOUND 1 1/2" ALUM. CAP STAMPED "OREG. STATE HWY. DIV." FLUSH WITH SURFACE IN GOOD CONDITION.
1102	165749.350	372477.952	FOUND 1" IRON ROD 60 mm BELOW SURFACE IN GOOD CONDITION.
1103	165725.928	372410.126	FOUND 5/8" IRON REBAR 40 mm ABOVE SURFACE IN GOOD CONDITION.
1104	165725.349	372478.708	FOUND 1 1/4" YELLOW PLASTIC CAP STAMPED "BTS ENG SURV" FLUSH WITH SURFACE IN GOOD CONDITION. (REF. SURVEY #2000-0024)
1105	165730.231	372492.399	FOUND 1 1/4" YELLOW PLASTIC CAP STAMPED "BTS ENG. SURV." 40 mm ABOVE SURFACE IN GOOD CONDITION. (REF. SURVEY #2000-0024)
1106	165772.095	372610.415	FOUND 5/8" IRON ROD FLUSH WITH ASPHALT CONC. IN GOOD CONDITION.
1187	165869.782	372689.158	FOUND 1/2" IRON ROD 110 mm BELOW SURFACE IN GOOD CONDITION. (REF. SURVEY #M74-37)
1188	165868.642	372719.487	FOUND 1/2" IRON ROD 300 mm BELOW SURFACE IN GOOD CONDITION. (REF. JUNCTION SUBD., VOL. 6, PG. 18)
1189	165868.345	372727.087	FOUND 1 1/2" O.D. IRON PIPE 470 mm BELOW SURFACE IN GOOD CONDITION. (REF. JUNCTION SUB., VOL. 6, PG. 18)
1190	165881.606	372741.292	FOUND 1 1/2" O.D. IRON PIPE 270 mm BELOW SURFACE IN GOOD CONDITION. (REF. JUNCTION SUB., VOL. 6, PG. 18)
G675	165829.572	372760.872	FOUND 2 3/4" BRASS DISK STAMPED "STATE HIGHWAY DEPARTMENT FEET B.M. NO. G675" SET FLUSH WITH CONC. IN GOOD CONDITION.

REFERENCE SURVEYS:

- 1990-0020
- 1992-0018
- 1992-0019
- 1993-0104A
- 1994-0058A
- 1997-0112
- 1998-0106
- 2000-0024
- JUNCTION SUBD., VOL. 6, PG. 18
- M46-6
- M48-19
- M62-40
- M66-17
- M71-26
- M73-45
- M74-37
- M76-63
- M81-32
- M89-61
- M93-22
- M100-45
- M101-34
- M104-39
- M112-16
- M114-53
- M117-40
- M120-19
- M124-52
- M128-28
- M129-14
- M129-21
- ODOT DRG. NOS. 9B-7-5, 6B-28-22, & 1A-22-13
- ST. HWY. IS-006, A-L
- WINSTON HOMES, VOL.8, PG. 19

REGISTERED
 PROFESSIONAL
 LAND SURVEYOR

Christine V. Blawie

OREGON
 JULY 19, 1994
 CHRISTINE V. BLAWIE
 2669

EXPIRES: DEC. 31, 2003



1 METER = 3937 U.S. FEET / 1200
 TO CONVERT A METRIC DISTANCE DIVIDE BY 0.30480061

OREGON DEPARTMENT OF TRANSPORTATION
 HORIZONTAL CONTROL, RECOVERY,
 AND RETRACEMENT MAP
 WINSTON - INTERSTATE 5
 COOS BAY - ROSEBURG HWY.
 DOUGLAS COUNTY
 3500 STEWART PARKWAY, SUITE 140
 ROSEBURG, OREGON 97470

APRIL 23, 2002
 PROJECT KEY *09841

SHEET 3 OF 8

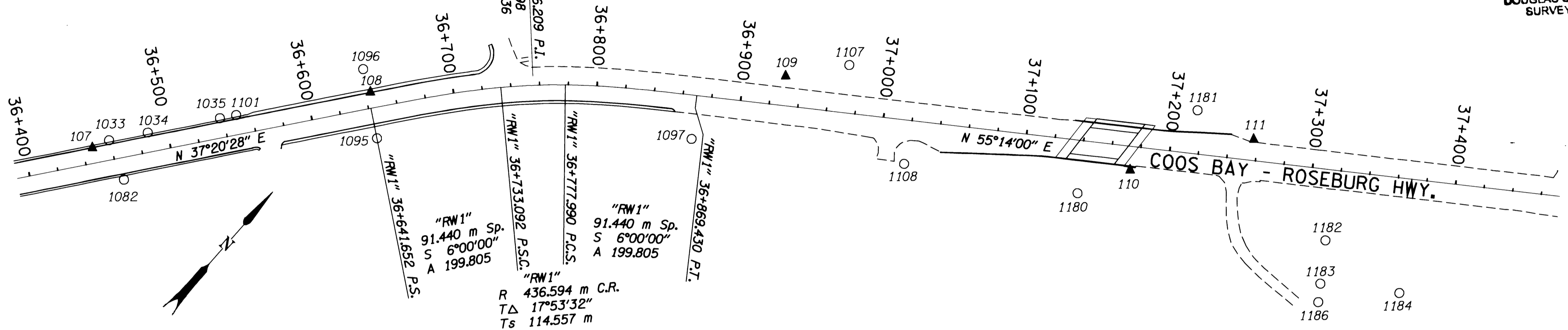
ST. HWY. 42-007C

COUNTY SURVEYORS FILE DATA
DO NOT REMOVE FROM OFFICE

NE 1/4 SEC. 21, SE 1/4 SEC. 16, AND SW 1/4 SEC. 15,
T. 28 S., R. 6 W., W. M.

FILED
Date: 4-29-2002 By: SC
This survey consists of:
Map: ST HWY 42-007A-H
Narrative:
Corner Rpt:

DOUGLAS COUNTY
SURVEYOR



POINT ID	LDP NORTHING	LDP EASTING	DESCRIPTION
107	166314.390	372982.131	SET 29 mm BRASS DISK IN CONC. SIDEWALK STAMPED "ODOT CONTROL 107".
108	166471.007	373101.199	SET 29 mm BRASS DISK IN CONC. SIDEWALK STAMPED "ODOT CONTROL 108".
109	166670.197	373309.796	SET 16 mm X 762 mm IRON REBAR WITH A 38 mm BRASS CAP STAMPED "ODOT CONTROL 109" 50 mm BELOW SURFACE.
110	166779.635	373532.310	SET 16 mm X 762 mm IRON REBAR WITH A 38 mm BRASS CAP STAMPED "ODOT CONTROL 110".
111	166852.472	373582.509	SET 16 mm X 762 mm IRON REBAR WITH A 38 mm BRASS CAP STAMPED "ODOT CONTROL 111" 50 mm BELOW SURFACE.
1033	166325.118	372987.920	FOUND 1 1/2" ALUM. CAP SET FLUSH WITH SURFACE IN FAIR CONDITION. STAMP HAS BEEN DESTROYED.

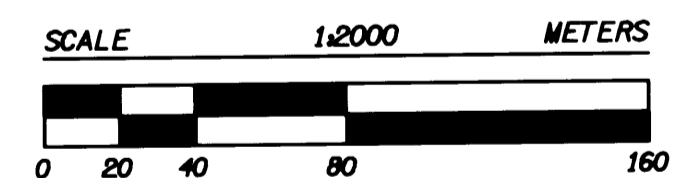
○ 1178

1034	166346.882	373004.542	FOUND 1 1/4" YELLOW PLASTIC CAP STAMPED "ARTMAN RLS2268" FLUSH WITH ASPHALT CONC. IN GOOD CONDITION. (REF. SURVEY *M117-40)
1035	166387.545	373035.575	FOUND 1 1/2" ALUM. CAP STAMPED "OREG. STATE HWY. DIV." 110 mm BELOW SURFACE IN GOOD CONDITION.
1082	166311.450	373013.828	FOUND 5/8" IRON REBAR 100 mm BELOW SURFACE IN GOOD CONDITION. (REF. SURVEY *M73-45)
1095	166449.085	373126.615	FOUND 1 1/2" ALUM. CAP STAMPED "OREG. STATE HWY. DIV. 1202+15.48 71.09" 130 mm BELOW SURFACE IN FAIR CONDITION.
1096	166478.914	373087.470	FOUND 5/8" IRON REBAR WITH 1 1/4" YELLOW PLASTIC CAP STAMPED "I.E. ENG." 140 mm ABOVE SURFACE IN GOOD CONDITION.
1097	166593.307	373290.519	FOUND 5/8" IRON ROD WITH A 1 1/2" ALUM. CAP STAMPED "OREG. STATE HWY. DIV. 1209+62.56 100". PADDLE BOARD NEARBY STA. 1209+62.56, 100 FT. RT.
1101	166396.629	373042.504	FOUND 1 1/4" PLASTIC CAP FLUSH WITH ASPHALT CONC. IN GOOD CONDITION. (MAP *M117-40)
1107	166704.518	373338.476	FOUND 1 1/2" ALUM. CAP STAMPED "OREG. STATE HWY. DEPT. 1213+00 110.0" 300 mm BELOW SURFACE IN GOOD CONDITION. POST AND PADDLE NEARBY 1213+00, 110.0 FT. LT.
1108	166678.049	373412.531	FOUND 5/8" IRON REBAR FLUSH WITH SURFACE IN GOOD CONDITION. POST AND PADDLE BOARD NEARBY R/W 1214+50, 100 FT. RT.
1178	166377.410	373482.233	FOUND GALVANIZED IRON PIPE WITH 2 5/8" BRASS DISK STAMPED "COUNTY SURVEYORS OFFICE 1962 T28S R6W S16 S15 S21 S22". 400 mm ABOVE SURFACE IN GOOD CONDITION.
1180	166742.524	373516.157	FOUND 5/8" IRON ROD WITH A 1 1/2" ALUM. CAP STAMPED "STATE HWY. R/W STATION 1218+50 120" RIGHT. 380 mm BELOW SURFACE IN GOOD CONDITION.
1181	166841.016	373540.461	FOUND 5/8" IRON ROD WITH A 1 1/2" ALUM. CAP STAMPED "OREG. STATE HWY. DIV." FLUSH WITH SURFACE IN GOOD CONDITION. PADDLE BOARD NEARBY MARKED "STA. 1221+00 100" LEFT.
1182	166832.073	373666.794	FOUND 1 1/4" O.D. IRON PIPE BENT TO THE EAST IN POOR CONDITION. TIED WHERE IT ENTERS GROUND. (REF. WINSTON HOMES, VOL. 8, PG. 19)
1183	166807.264	373684.046	FOUND 1 1/4" O.D. IRON PIPE, 100 mm BELOW SURFACE IN FAIR CONDITION. (REF. WINSTON HOMES, VOL. 8, PG. 19)
1184	166838.684	373729.485	FOUND 1 1/4" O.D. IRON PIPE, 70 mm BELOW SURFACE IN GOOD CONDITION. (REF. WINSTON HOMES, VOL. 8, PG. 19)
1185	166798.298	373757.920	FOUND 1 1/4" O.D. IRON PIPE, 100 mm BELOW SURFACE IN GOOD CONDITION. SLIGHTLY TILTED NORTH EAST. (REF. WINSTON HOMES, VOL. 8, PG. 19)
1186	166796.653	373691.445	FOUND 1 1/4" O.D. IRON PIPE, 200 mm BELOW SURFACE IN GOOD CONDITION. (REF. WINSTON HOMES, VOL. 8, PG. 19)

LEGEND

- ▲ SET MONUMENT
- FOUND MONUMENT
- ==== CURB/SIDEWALK
- EDGE OF PAVEMENT
- CONCRETE BARRIER
- R/W CENTER LINE

REGISTERED PROFESSIONAL LAND SURVEYOR
Christine V. Blavin
OREGON JULY 19, 1994
CHRISTINE V. BLAVIN
2009
EXPIRES: DEC. 31, 2003



1 METER = 3937 U.S. FEET / 1200
TO CONVERT A METRIC DISTANCE DIVIDE BY 0.30480061

OREGON DEPARTMENT OF TRANSPORTATION
HORIZONTAL CONTROL, RECOVERY,
AND RETRACEMENT MAP
WINSTON - INTERSTATE 5
COOS BAY - ROSEBURG HWY.
DOUGLAS COUNTY
3500 STEWART PARKWAY, SUITE 140
ROSEBURG, OREGON 97470

APRIL 23, 2002
PROJECT KEY #09841

SHEET 4 OF 8

ST. HWY. 42-007D

COUNTY SURVEYORS FILE DATA
DO NOT REMOVE FROM OFFICE

SW 1/4, NW 1/4, & NE 1/4 SEC. 15, SE 1/4 SEC. 10, AND SW 1/4 SEC. 11,
T. 28 S., R. 6 W., W. M.

FILED
Date: 4-29-2002 By: J.C.
This survey consists of:
Map: ST HWY 42-007A
Narrative: _____
Corner Rpt: _____

DOUGLAS COUNTY
SURVEYOR

"RW1"
R 873.188 m C.L.
TΔ 8°48'15"
Ts 128.225 m

"RW1"
121.920 m Sp.
S 4°00'00"
A 326.281

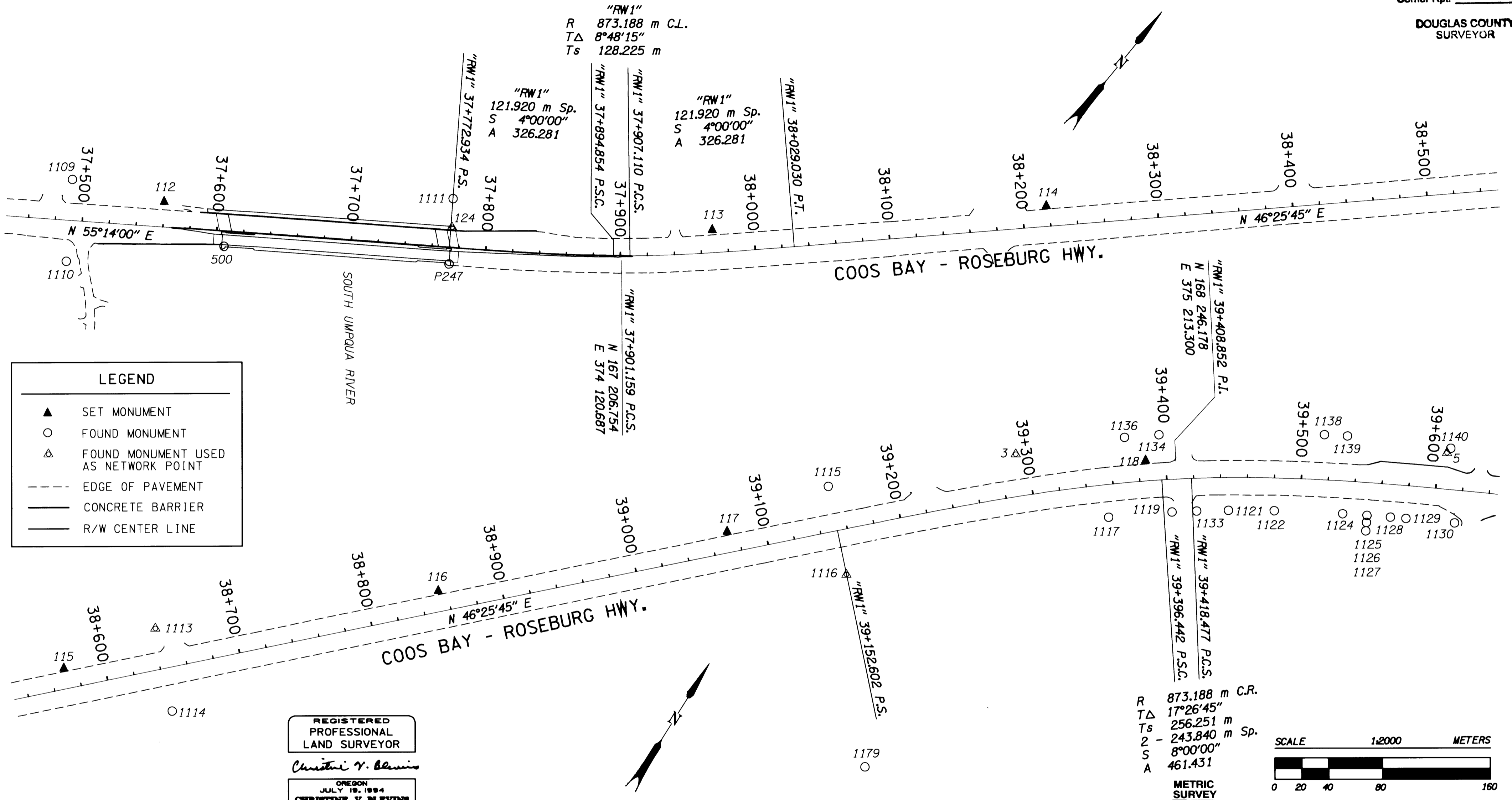
"RW1"
121.920 m Sp.
S 4°00'00"
A 326.281

"RW1" 37+772.934 P.S.
"RW1" 37+894.854 P.S.C.
"RW1" 37+907.110 P.C.S.

"RW1" 38+029.030 P.T.

"RW1" 39+408.852 P.T.
N 168 246.178
E 375 213.300

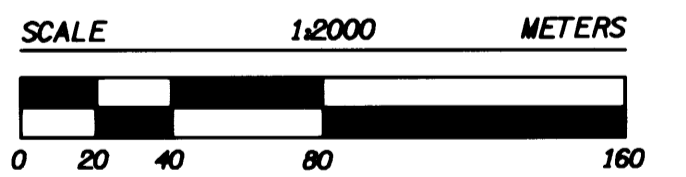
R 873.188 m C.R.
TΔ 17°26'45"
Ts 256.251 m
2 - 243.840 m Sp.
S 8°00'00"
A 461.431



LEGEND

- ▲ SET MONUMENT
- FOUND MONUMENT
- △ FOUND MONUMENT USED AS NETWORK POINT
- - - EDGE OF PAVEMENT
- CONCRETE BARRIER
- R/W CENTER LINE

REGISTERED
PROFESSIONAL
LAND SURVEYOR
Christine V. Blewins
OREGON
JULY 19, 1994
CHRISTINE V. BLEWINS
2669
EXPIRES: DEC. 31, 2003



METRIC SURVEY
1 METER = 3937 U.S. FEET / 1200
TO CONVERT A METRIC DISTANCE DIVIDE BY 0.30480061

POINT ID	LDP NORTHING	LDP EASTING	DESCRIPTION
3	168187.665	375109.689	FOUND 38 mm ALUM. CAP STAMPED "ODOT HORIZ. CONTROL 3" FLUSH WITH SURFACE IN GOOD CONDITION. (REF. SURVEY *M129-21)
5	168358.028	375380.860	FOUND 38 mm ALUM. CAP STAMPED "ODOT HORIZ. CONTROL 5" FLUSH WITH SURFACE IN GOOD CONDITION. (REF. SURVEY *M129-21)
112	167028.251	373828.863	SET 16 mm X 762 mm IRON REBAR WITH A 38 mm BRASS CAP STAMPED "ODOT CONTROL 112" 70 mm BELOW SURFACE.
113	167267.186	374158.006	SET 16 mm X 762 mm IRON REBAR WITH A 38 mm BRASS CAP STAMPED "ODOT CONTROL 113" 50 mm BELOW SURFACE.
114	167437.068	374339.329	SET 16 mm X 762 mm IRON REBAR WITH A 38 mm BRASS CAP STAMPED "ODOT CONTROL 114" 50 mm BELOW SURFACE.
115	167679.836	374594.574	SET 16 mm X 762 mm IRON REBAR WITH A 38 mm BRASS CAP STAMPED "ODOT CONTROL 115" 50 mm BELOW SURFACE.

OREGON DEPARTMENT OF TRANSPORTATION
HORIZONTAL CONTROL, RECOVERY,
AND RETRACEMENT MAP
WINSTON - INTERSTATE 5
COOS BAY - ROSEBURG HWY.
DOUGLAS COUNTY
3500 STEWART PARKWAY, SUITE 140
ROSEBURG, OREGON 97470
APRIL 23, 2002
PROJECT KEY #09841
SHEET 5 OF 8

ST. HWY. 42-007E

**COUNTY SURVEYORS FILE DATA
DO NOT REMOVE FROM OFFICE**

FILED
Date: 4-29-2002 By: JC
This survey consists of:
Map: St. Hwy 42-007A-H
Narrative: _____
Corner Rpt: _____

**DOUGLAS COUNTY
SURVEYOR**

POINT ID	LDP NORTHING	LDP EASTING	DESCRIPTION
116	167875.380	374799.861	SET 16 mm X 762 mm IRON REBAR WITH A 38 mm BRASS CAP STAMPED "ODOT CONTROL 116" 50 mm BELOW SURFACE.
117	168026.319	374958.196	SET 16 mm X 762 mm IRON REBAR WITH A 38 mm BRASS CAP STAMPED "ODOT CONTROL 117" FLUSH WITH SURFACE.
118	168235.653	375193.466	SET 16 mm X 762 mm IRON REBAR WITH A 38 mm BRASS CAP STAMPED "ODOT CONTROL 118" 50 mm BELOW SURFACE.
124	167146.666	374007.334	FOUND 3" BRASS DISK SET IN CONC. BRIDGE IMPACT PANEL STAMPED "DOUGLAS CO. SURVEYORS OFFICE P247 RM2 1978" IN GOOD CONDITION.
500	167029.488	373884.726	FOUND 3" BRASS DISK STAMPED "DOUGLAS CO. SURVEYORS OFFICE P247 RM1 1978" SET IN CONC. BRIDGE SIDEWALK.
1109	166997.552	373765.913	FOUND 1 1/2" ALUM. CAP STAMPED "OREG. STATE HWY. DIV." IN FAIR CONDITION.
1110	166947.470	373800.606	FOUND 1 1/2" ALUM. CAP STAMPED "OREG. STATE HWY. DIV." 30 mm ABOVE SURFACE IN FAIR CONDITION.
1111	167163.728	373994.610	FOUND 1 1/2" ALUM. CAP STAMPED "OREG. STATE HWY." 20 mm ABOVE SURFACE IN FAIR CONDITION.
1113	167739.957	374636.951	FOUND 1 1/2" ALUM. CAP STAMPED "OREG. STATE HWY. DEPT." FLUSH WITH SURFACE IN GOOD CONDITION (STA. 1267+80.00 P.O.T., 100.00 FT. LT.)
1114	167694.641	374680.013	FOUND 1 1/2" ALUM. CAP STAMPED "OREG. STATE HWY. DEPT. R/W 1267+80" FLUSH WITH SURFACE IN GOOD CONDITION. ODOT R/W STA. 1267+80, 105 FT. RT. (ODOT R/W DRG. NO. *9B-7-5)
1115	168093.777	375004.475	FOUND 1 1/2" ALUM. CAP STAMPED "OREG. STATE HWY. DIV. 1284+54.02 110.0" FLUSH WITH SURFACE IN FAIR CONDITION.
1116	168045.217	375050.685	FOUND 1 1/2" ALUM. CAP STAMPED "OREG. STATE HWY. DIV. 1284+54.02 110" FLUSH WITH SURFACE IN GOOD CONDITION (STA. 1284+54.02 P.S., 110.00 FT. RT.)
1117	168184.552	375192.963	FOUND 5/8" IRON REBAR BADLY BENT IN POOR CONDITION. TIED WHERE ROD ENTERS THE GROUND. (REF. SURVEY *1992-0018)
1119	168212.721	375230.815	FOUND 1 1/4" YELLOW PLASTIC CAP STAMPED "LANG SURVEYING" 70 mm BELOW SURFACE. (REF. SURVEY *128-28)
1121	168235.981	375265.640	FOUND 1 1/4" YELLOW PLASTIC CAP STAMPED "LANG SURVEYING" 110 mm ABOVE SURFACE IN GOOD CONDITION. (REF. SURVEY *1992-0018)
1122	168253.734	375294.627	FOUND 1 1/4" YELLOW PLASTIC CAP STAMPED "LANG SURVEYING" 200 mm BELOW SURFACE IN GOOD CONDITION. (REF. SURVEY *1992-0019)
1124	168278.728	375338.916	FOUND 1 1/4" YELLOW PLASTIC CAP STAMPED "LANG SURVEYING" FLUSH WITH SURFACE IN GOOD CONDITION. (REF. SURVEY *1998-0106)
1125	168287.236	375354.931	FOUND 5/8" IRON ROD 70 mm ABOVE SURFACE IN POOR CONDITION. ROD IS BENT AND CAP IS DESTROYED, TIED WHERE IT ENTERS THE GROUND. (REF. SURVEY *1992-0019)
1126	168282.560	375357.399	FOUND 5/8" IRON ROD FLUSH WITH SURFACE. ROD IS SLIGHTLY BENT IN POOR TO FAIR CONDITION, CAP IS DESTROYED. (REF. SURVEY *1998-0106)
1127	168276.939	375360.315	FOUND 1/2" IRON ROD 40 mm ABOVE SURFACE IN GOOD CONDITION. (REF. SURVEY *1992-0019)
1128	168295.327	375370.352	FOUND 1 1/4" YELLOW PLASTIC CAP STAMPED "LANG SURVEYING" 40 mm ABOVE SURFACE IN GOOD CONDITION. (REF. SURVEY *1998-0106)
1129	168300.597	375380.648	FOUND 5/8" IRON REBAR 410 mm BELOW SURFACE IN GOOD CONDITION. (REF. SURVEY *M101-34)
1130	168316.862	375413.037	FOUND 5/8" IRON REBAR 160 mm BELOW SURFACE IN GOOD CONDITION. CAP DESTROYED. (REF. SURVEY *M101-34)
1133	168223.067	375245.905	FOUND 1 1/4" YELLOW PLASTIC CAP STAMPED "LANG SURVEYING" FLUSH WITH SURFACE IN GOOD CONDITION. (REF. SURVEY *128-28)
1134	168256.270	375192.217	FOUND 1 1/2" ALUM. CAP STAMPED "OREG. STATE HWY. DIV. 1292+54.02 P.S.C. 110" FLUSH WITH SURFACE IN GOOD CONDITION.
1136	168241.047	375171.518	FOUND 1 1/4" YELLOW PLASTIC CAP STAMPED "BTS ENG SURV." 400 mm BELOW SURFACE IN GOOD CONDITION. (REF. SURVEY *120-19)
1138	168321.364	375296.330	FOUND 5/8" IRON REBAR FLUSH WITH SURFACE IN POOR CONDITION. REBAR BENT OVER, TIED WHERE REBAR ENTERS GROUND. (REF. SURVEY *120-19)
1139	168329.592	375311.371	FOUND 1 1/2" ALUM. CAP STAMPED "OREG. STATE HWY. 1297" 200 mm BELOW SURFACE IN FAIR TO POOR CONDITION. ABOUT A THIRD OF CAP IS DAMAGED AND UNREADABLE.
1140	168362.344	375381.365	FOUND NAIL IN CONC. SLAB FLUSH WITH SURFACE IN GOOD CONDITION. (REF. SURVEY *M76-63)
1179	167931.340	375137.824	FOUND 2 1/4" BRASS DISK STAMPED "COUNTY SURVEYORS OFFICE 1962 T28S R6W S10 S11 S15 S14" ON A GALVANIZE PIPE 300 mm ABOVE THE SURFACE IN GOOD CONDITION.
P247	167124.098	374022.758	FOUND 3" BRASS DISK STAMPED "STATE HIGHWAY DEPARTMENT BENCH MARK P247 ELEVATION ABOVE MEAN SEA LEVEL FEET RESET" SET FLUSH IN CONC. BRIDGE SIDEWALK

**REGISTERED
PROFESSIONAL
LAND SURVEYOR**

Christine V. Blewins

OREGON
JULY 19, 1994
CHRISTINE V. BLEWINS
2689

EXPIRES: DEC. 31, 2003



1 METER = 3937 U.S. FEET / 1200
TO CONVERT A METRIC DISTANCE DIVIDE BY 0.30480061

**OREGON DEPARTMENT OF TRANSPORTATION
HORIZONTAL CONTROL, RECOVERY,
AND RETRACEMENT MAP
WINSTON - INTERSTATE 5
COOS BAY - ROSEBURG HWY.
DOUGLAS COUNTY
3500 STEWART PARKWAY, SUITE 140
ROSEBURG, OREGON 97470**

APRIL 23, 2002
PROJECT KEY *09841

SHEET 6 OF 8

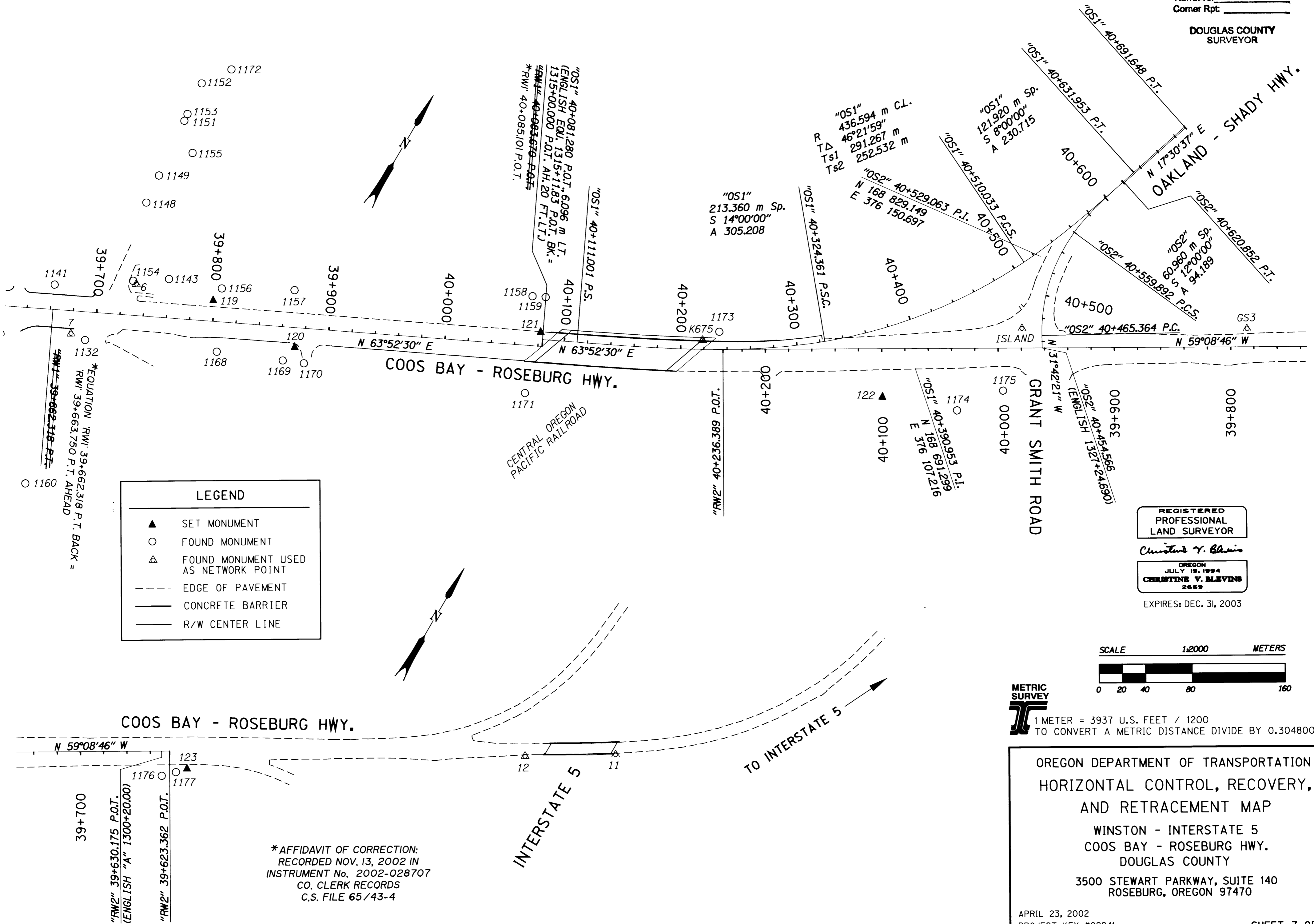
ST. HWY. 42-007F

COUNTY SURVEYORS FILE DATA
DO NOT REMOVE FROM OFFICE

NE 1/4, SE 1/4, & SW 1/4 SEC. 11, T. 28 S., R. 6 W., W. M.

FILED
Date: 4-29-2002 By: JC
This survey consists of:
Map: ST HWY 42-007A - H
Narrative:
Corner Rpt:

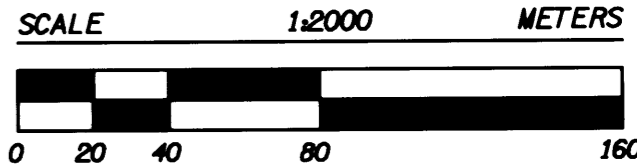
DOUGLAS COUNTY
SURVEYOR



LEGEND

- ▲ SET MONUMENT
- FOUND MONUMENT
- △ FOUND MONUMENT USED AS NETWORK POINT
- - - EDGE OF PAVEMENT
- CONCRETE BARRIER
- R/W CENTER LINE

REGISTERED
PROFESSIONAL
LAND SURVEYOR
Christine V. Mevins
OREGON
JULY 19, 1994
CHRISTINE V. MEVINS
2669
EXPIRES: DEC. 31, 2003



METRIC SURVEY
1 METER = 3937 U.S. FEET / 1200
TO CONVERT A METRIC DISTANCE DIVIDE BY 0.30480061

OREGON DEPARTMENT OF TRANSPORTATION
HORIZONTAL CONTROL, RECOVERY,
AND RETRACEMENT MAP
WINSTON - INTERSTATE 5
COOS BAY - ROSEBURG HWY.
DOUGLAS COUNTY
3500 STEWART PARKWAY, SUITE 140
ROSEBURG, OREGON 97470

*AFFIDAVIT OF CORRECTION:
RECORDED NOV. 13, 2002 IN
INSTRUMENT No. 2002-028707
CO. CLERK RECORDS
C.S. FILE 65/43-4

COUNTY SURVEYORS FILE DATA

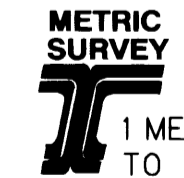
DO NOT REMOVE FROM OFFICE

POINT ID	LDP NORTHING	LDP EASTING	DESCRIPTION
6	168414.038	375494.033	FOUND 38 mm ALUM. CAP STAMPED "ODOT HORIZ. CONTROL 6" FLUSH WITH SURFACE IN GOOD CONDITION. (REF. SURVEY #129-21)
7	168348.760	375467.375	FOUND 38 mm ALUM. CAP STAMPED "ODOT HORIZ. CONTROL 7" FLUSH WITH ASPHALT CONC. IN GOOD CONDITION. (REF. SURVEY #129-21)
11	169127.797	376814.511	FOUND 38 mm BRASS CAP STAMPED "ODOT CONTROL 11" 50 mm BELOW SURFACE IN GOOD CONDITION. ORANGE CARSONITE POST NEARBY. (REF. SURVEY *ST. HWY. IS-006, A-L)
12	169087.101	376748.236	FOUND 38 mm BRASS CAP STAMPED "ODOT CONTROL 12" 50 mm BELOW SURFACE IN GOOD CONDITION. ORANGE CARSONITE WITNESS POST NEARBY. (REF. SURVEY *ST. HWY. IS-006, A-L)
119	168436.192	375557.725	SET 16 mm X 762 mm IRON REBAR WITH A 38 mm BRASS CAP STAMPED "ODOT CONTROL 119". SET IN ASPHALT CONC. WALK FLUSH WITH SURFACE.
120	168436.825	375638.534	SET 16 mm X 762 mm IRON REBAR WITH A 38 mm BRASS CAP STAMPED "ODOT CONTROL 120" FLUSH WITH SURFACE.
121	168555.483	375813.861	SET 16 mm X 762 mm IRON REBAR WITH A 38 mm BRASS CAP STAMPED "ODOT CONTROL 121" 20 mm BELOW SURFACE.
122	168656.580	376094.998	SET 16 mm X 762 mm IRON REBAR WITH A 38 mm BRASS CAP STAMPED "ODOT CONTROL 122" 50 mm BELOW SURFACE.
123	168930.966	376503.147	SET 16 mm X 762 mm IRON REBAR WITH A 38 mm BRASS CAP STAMPED "ODOT CONTROL 123" FLUSH WITH SURFACE.
1132	168350.110	375480.616	FOUND RAIL ROAD SPIKE IN ASPHALT CONC. IN GOOD CONDITION.
1141	168378.029	375433.803	FOUND 1 1/2" UNREADABLE ALUM. CAP WITH ROD BENT OVER. TIED WHERE ROD ENTERS GROUND. (EQUATION STATION 1301+29.44 P.O.T. AH. = 1301+26.31 P.T. BK.)
1143	168431.921	375516.122	FOUND 1 1/4" YELLOW PLASTIC CAP STAMPED "I.E. ENG." 30 mm ABOVE SURFACE IN GOOD CONDITION. (REF. SURVEY #1997-0112)
1148	168478.772	375465.794	FOUND 5/8" IRON REBAR 150 mm BELOW SURFACE FAIR TO POOR CONDITION. ROD LEANS A LITTLE. (REF. SURVEY *M66-17)
1149	168504.396	375463.312	FOUND 5/8" IRON REBAR 20 mm BELOW SURFACE IN GOOD CONDITION. (REF. SURVEY *M62-40)
1151	168556.133	375458.090	FOUND 5/8" IRON REBAR 20 mm BELOW SURFACE IN GOOD CONDITION. (REF. SURVEY *M62-40)
1152	168591.389	375454.562	FOUND 1 1/2" ANGLE IRON 100 mm BELOW SURFACE IN GOOD CONDITION.
1153	168562.500	375457.398	FOUND 1 1/4" YELLOW PLASTIC CAP STAMPED "BTS ENG SURV." FLUSH WITH SURFACE IN GOOD CONDITION. (REF. SURVEY *M63-64)
1154	168415.014	375490.308	FOUND 1 1/4" PLASTIC CAP STAMPED "I.E. ENG." FLUSH WITH SURFACE IN GOOD CONDITION. (REF. SURVEY #1997-0112)
1155	168535.716	375478.317	FOUND 1 1/4" YELLOW PLASTIC CAP STAMPED "I.E. ENG." 100 mm ABOVE SURFACE IN GOOD CONDITION. (REF. SURVEY #1997-0112)
1156	168447.991	375559.301	FOUND 1 1/2" ALUM. CAP STAMPED "OREG. STATE HWY. DIV. 1306 95.0" 400 mm BELOW SURFACE IN GOOD CONDITION. POST AND PADDLE NEARBY 1306+00, 95.0 FT. LT.
1157	168478.381	375613.897	FOUND 1 1/4" YELLOW PLASTIC CAP STAMPED "I.E. ENG." 100 mm ABOVE SURFACE IN GOOD CONDITION. (REF. SURVEY #1997-0112)
1158	168577.760	375792.567	FOUND 1 1/4" YELLOW PLASTIC CAP STAMPED "AA SURVEYING INC." 30 mm ABOVE SURFACE IN GOOD CONDITION. (REF. SURVEY #100-45)
1159	168582.825	375802.689	FOUND 5/8" IRON ROD WITH A 1 1/2" ALUM. CAP STAMPED "OREG. STATE HWY. DIV. R/W EQUA" 150 mm ABOVE SURFACE IN GOOD CONDITION. POST AND PADDLE BOARD NEARBY MARKED "EQ SHRW POT 1315+11.83 BK. POT 1315+00 AH. R/W 140".
1160	168217.752	375499.034	FOUND 5/8" IRON ROD WITH 1 1/4" PLASTIC CAP STAMPED "BENTZ SUR. INC." 40 mm ABOVE SURFACE IN GOOD CONDITION. (REF. SURVEY 1990-0020)
1168	168398.776	375583.320	FOUND 1 1/2" ALUM. CAP STAMPED "OREG. STATE HWY. DIV." FLUSH WITH SURFACE IN GOOD CONDITION. POST AND PADDLE BOARD SHRW 1306+00, 85 FT. RT.
1169	168420.960	375636.004	FOUND 5/8" IRON REBAR WITH A 1 1/4" YELLOW PLASTIC CAP STAMPED "ARTMAN RLS 2268" 100 mm ABOVE SURFACE IN GOOD CONDITION. (REF. SURVEY #114-53)
1170	168428.074	375652.880	FOUND 1 1/4" YELLOW PLASTIC CAP STAMPED "ARTMAN RLS 2268" FLUSH WITH ASPHALT CONC. PAVEMENT IN GOOD CONDITION. (REF. SURVEY #M114-53)
1171	168502.486	375829.405	FOUND 1 1/2" ALUM. CAP STAMPED "OREG. STATE HWY. DIV." FLUSH WITH SURFACE IN GOOD CONDITION. (R/W STATION 1314+75, 135 FT. RT.)
1172	168614.675	375470.447	FOUND 5/8" IRON REBAR WITH A 1 1/4" YELLOW PLASTIC CAP STAMPED "I.E. ENG." 170 mm ABOVE SURFACE IN GOOD CONDITION. (REF. SURVEY #M1997-0112)
1173	168632.907	375946.219	FOUND 1 1/2" ALUM. CAP STAMPED "OREG. STATE HWY. DIV." 80 mm ABOVE SURFACE IN GOOD CONDITION. CAP IS LOOSE, POST NEARBY R/W STATION 1320+00, 50 FT. LT.
1174	168678.416	376156.523	FOUND 1 1/2" ALUM. CAP STAMPED "OREG. STATE HWY. DEPT. 1313+50 175.0" 150 mm BELOW SURFACE IN GOOD CONDITION. POST AND BOARD NEARBY MARKED "SHRW 1313+50 RW 175".
1175	168713.273	376181.928	FOUND 5/8" IRON ROD WITH 1 1/2" ALUM. CAP STAMPED "OREG. STATE HWY. DEPT. 1312+20 100.0" 160 mm ABOVE SURFACE IN GOOD CONDITION. POST AND PADDLE NEARBY SHRW 1312+20 RW 120
1176	168913.949	376487.987	FOUND 1 1/4" YELLOW PLASTIC CAP STAMPED "O.S.H.D. R/W" FLUSH WITH SURFACE IN GOOD CONDITION. POST AND PADDLE MARKED "SHRW 1300+20 70.0 LT."
1177	168922.796	376496.852	FOUND 1 1/4" YELLOW PLASTIC CAP STAMPED "O.S.H.D. R/W" 70 mm BELOW SURFACE IN GOOD CONDITION. POST AND PADDLE BOARD NEARBY MARKED "SHRW 1299+80 60.0 LT."
GS3	168865.885	376335.509	FOUND 38 mm ALUM. CAP STAMPED "ODOT HORIZ. CONTROL 3" FLUSH WITH SURFACE IN GOOD CONDITION. (REF. SURVEY #129-14)
ISLAND	168767.653	376168.724	FOUND 76 mm BRASS CAP STAMPED "OREGON STATE HIGHWAY DIVISION DO NOT DISTURB ISLAND" SET IN CONC. ISLAND. (REF. SURVEY #129-14)
K675	168619.298	375937.560	FOUND 3" BRASS CAP IN CONC. SIDEWALK STAMPED "OREGON STATE HIGHWAY DIV. BENCH MARK K675 1978" IN GOOD CONDITION.

FILED
 Date: 4-29-2002 By: JC
 This survey consists of:
 Map: St Hwy 42-007 A-W
 Narrative:
 Corner Rpt:
 DOUGLAS COUNTY
 SURVEYOR

REGISTERED
 PROFESSIONAL
 LAND SURVEYOR
Christine V. Blavins
 OREGON
 JULY 19, 1994
 CHRISTINE V. BLAVINS
 2669

EXPIRES: DEC. 31, 2003



1 METER = 3937 U.S. FEET / 1200
 TO CONVERT A METRIC DISTANCE DIVIDE BY 0.30480061

OREGON DEPARTMENT OF TRANSPORTATION
 HORIZONTAL CONTROL, RECOVERY,
 AND RETRACEMENT MAP
 WINSTON - INTERSTATE 5
 COOS BAY - ROSEBURG HWY.
 DOUGLAS COUNTY
 3500 STEWART PARKWAY, SUITE 140
 ROSEBURG, OREGON 97470

APRIL 23, 2002
 PROJECT KEY #09841

SHEET 8 OF 8

ST. HWY. 42-007H