

COUNTY SURVEYORS FILE DATA  
DO NOT REMOVE FROM OFFICE

# HORIZONTAL CONTROL, RECOVERY AND RETRACEMENT MAP

FOR THE OREGON DEPARTMENT OF TRANSPORTATION  
LOCATED IN THE S.E. 1/4 OF SEC. 10, S.W. 1/4 OF SEC. 11, & N.E. 1/4 OF SEC. 15, T. 28 S., R. 6 W., W.M.  
DOUGLAS COUNTY

FILED  
Date: 11/19/1998 By: JP  
This survey consists of: 2 PGS  
Map: M129-21A  
Narrative: \_\_\_\_\_  
Corner Plat: \_\_\_\_\_  
DOUGLAS COUNTY SURVEYOR

## Horizontal Control Network

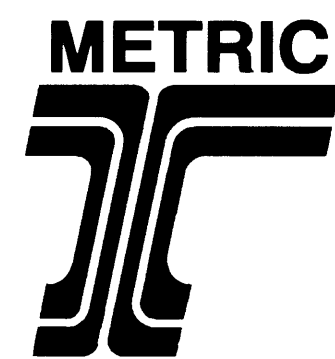
### Set Monuments

Point	DESCRIPTION	NORTH (M)	EAST (M)	ELEV. (M)
3	SET 13MM SO. IRON ROD 760 MM LONG W/38 MM DIA. ALUM. CAP STAMPED "ODOT HORIZ. CONTROL 3"	168187.258	375109.149	167.245
4	SET 13MM SO. IRON ROD 760 MM LONG W/38 MM DIA. ALUM. CAP STAMPED "ODOT HORIZ. CONTROL 4"	168248.435	375277.455	159.515
5	SET 13MM SO. IRON ROD 760 MM LONG W/38 MM DIA. ALUM. CAP STAMPED "ODOT HORIZ. CONTROL 5"	168357.324	375380.503	158.072
6	SET 13MM SO. IRON ROD 760 MM LONG W/38 MM DIA. ALUM. CAP STAMPED "ODOT HORIZ. CONTROL 6"	168413.216	375493.738	155.306
7	SET 13MM SO. IRON ROD 760 MM LONG W/38 MM DIA. ALUM. CAP STAMPED "ODOT HORIZ. CONTROL 7"	168347.967	375467.010	155.301

### Found Monuments

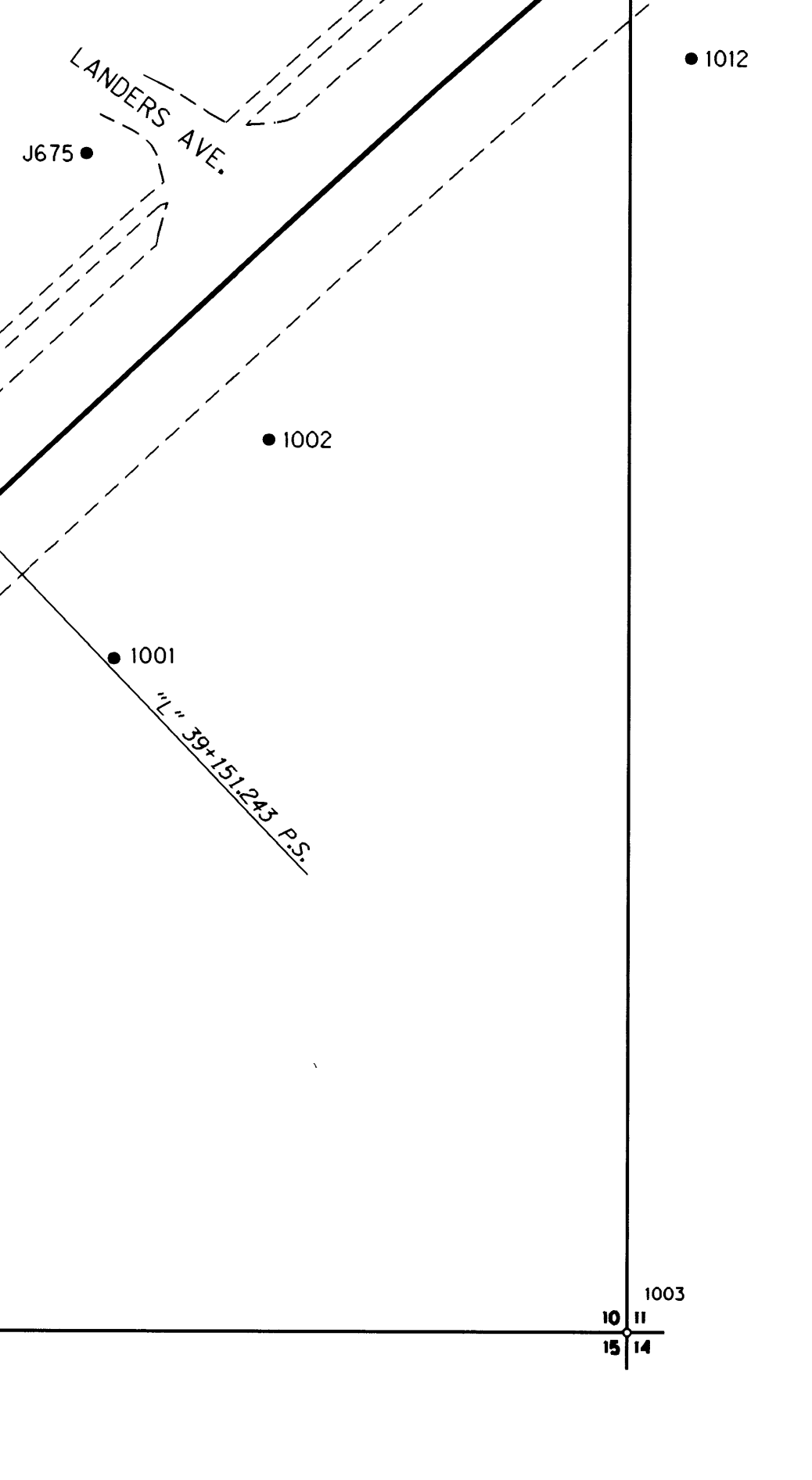
1	FD PK NAIL SET IN CONCRETE. ODOT RW STA 1276+50 90' LT.	167920.166	374830.407	
2	FD 16 MM (5/8") IRON ROD W/38 MM (1-1/2") ALUM. CAP STAMPED "OREG. STATE HWY. DIV" R/W STA. 1283+00, 90' LT.	168056.757	374973.988	160.466
J675	J675 FD 68 MM (2-3/4") BRASS CAP SET IN CONC. STAMPED "STATE HIGHWAY DEPARTMENT ELEVATION FT BM NO. J675"	168130.561	375045.128	162.839
1000	FD 16 MM (5/8") IRON ROD W/38 MM (1-1/2") ALUM. CAP STAMPED "OREG. STATE HWY. DIV" R/W STA. 1284+54.02 P.S. 110' LT.	168093.472	375003.845	
1001	FD 16 MM (5/8") IRON ROD W/38 MM (1-1/2") ALUM. CAP STAMPED "OREG. STATE HWY. DIV" R/W STA. 1284+54.02 P.S. 110' RT.	168044.855	375049.989	
1002	FD 16 MM (5/8") IRON ROD W/38 MM (1-1/2") ALUM. CAP STAMPED "OREG. STATE HWY. DIV" R/W STA. 1286+00 80' RT.	168082.094	375076.051	
1003	SECTION CORNER 10, 11, 14, 15. 2-1/2" BRASS CAP MOUNTED ON 1/4" O.D. GALV. PIPE	167930.911	375137.036	
1004	FD 16 MM (5/8") IRON ROD	168184.087	375192.407	
1005	FD 16 MM (5/8") IRON ROD W/38 MM (1-1/2") ALUM. CAP STAMPED "OREG. STATE HWY. DIV" R/W STA. 1292+54.02 P.S.C. 80' RT.	168208.728	375225.350	
1006	FD 16 MM (5/8") IRON ROD W/38 MM (1-1/2") ALUM. CAP STAMPED "OREG. STATE HWY. DIV" R/W STA. 1293+26.31 P.C.S. 80' RT.	168220.867	375242.889	
1007	FD 16 MM (5/8") IRON ROD W/32 MM (1-1/4") PLASTIC CAP STAMPED "LANG SURVEYING" (DCSO 1992-0018)	168235.408	375265.150	
1008	FD 16 MM (5/8") IRON ROD W/32 MM (1-1/4") PLASTIC CAP STAMPED "LANG SURVEYING" (DCSO 1992-0018)	168253.140	375294.149	
1009	FD 16 MM (5/8") IRON ROD W/32 MM (1-1/4") PLASTIC CAP STAMPED "LANG SURVEYING"	168240.576	375171.040	

NOTE: ALL COORDINATES ON THIS MAP ARE METRIC, ON A LOCAL DATUM PLANE, WHICH REPRESENTS TRUE GROUND DISTANCES. TO CONVERT COORDINATES TO ENGLISH, DIVIDE THE METRIC COORDINATES BY 0.3048



BASIS OF BEARING  
N 46° 25' 45" E  
198.173 m

COOS BAY - ROSEBURG HWY (HWY 42)



## Horizontal Control Network

### Found Monuments

POINT	DESCRIPTION	NORTH (M)	EAST (M)	ELEV. (M)
1010	FD 16 MM (5/8") IRON ROD W/38 MM (1-1/2") ALUM. CAP STAMPED "OREG. STATE HWY. DIV" R/W STA. 1292+54.02 P.S.C.	168255.782	375191.759	
1011	FD 16 MM (5/8") IRON ROD W/38 MM (1-1/2") ALUM. CAP STAMPED "OREG. STATE HWY. DIV" R/W STA. 1293+26.31 P.C.S.	168268.815	375210.491	
1012	FD 16 MM (5/8") IRON ROD W/32 MM (1-1/4") PLASTIC CAP STAMPED "LANG SURVEYING" (DCSO 1992-0018)	168146.822	375147.259	
1013	FD 16 MM (5/8") IRON ROD W/32 MM (1-1/4") PLASTIC CAP STAMPED "BTS ENG - SURV"	168285.026	375235.323	
1014	FD 16 MM (5/8") IRON ROD W/32 MM (1-1/4") PLASTIC CAP STAMPED "BTS ENG - SURV"	168320.745	375295.950	
1015	FD 16 MM (5/8") IRON ROD W/38 MM (1-1/2") ALUM. CAP STAMPED "OREG. STATE HWY. DIV" R/W STA. 1297+00 110' LT.	168328.950	375310.986	
1016	FD NAIL IN CONC. SLAB R/W STA. 1299+50, 100' LT.	168361.632	375381.018	
1017	FD 16 MM (5/8") IRON ROD W/32 MM (1-1/4") PLASTIC CAP STAMPED "LANG SURVEYING" (DCSO 1992-0018)	168286.578	375354.461	
1018	FD 16 MM (5/8") IRON ROD W/32 MM (1-1/4") PLASTIC CAP STAMPED "LANG SURVEYING" (DCSO 1992-0018)	168276.224	375359.887	
1019	FD 16 MM (5/8") IRON ROD W/32 MM (1-1/4") PLASTIC CAP STAMPED "LANG SURVEYING" (DCSO 1992-0018)	168268.907	375352.450	
1020	FD 16 MM (5/8") IRON ROD W/32 MM (1-1/4") PLASTIC CAP	168299.891	375380.233	
1021	FD 16 MM (5/8") IRON ROD W/32 MM (1-1/4") PLASTIC CAP	168316.131	375412.634	
1022	FD 16 MM (5/8") IRON ROD W/38 MM (1-1/2") ALUM. CAP, PUNCHED	168377.271	375433.490	
1023	FD 16 MM (5/8") IRON ROD W/38 MM (1-1/2") ALUM. CAP STAMPED "OREG. STATE HWY. DIV" R/W STA. 1306+00, 95' LT.	168447.107	375559.041	
1024	FD 16 MM (5/8") IRON ROD W/38 MM (1-1/2") ALUM. CAP STAMPED "OREG. STATE HWY. DIV" R/W STA. 1306+00, 85' RT.	168397.864	375583.012	
1025	FD RAILROAD SPIKE SET IN AC STAMPED "LS"	168349.302	375480.252	

REGISTERED PROFESSIONAL LAND SURVEYOR

ROBERT G. PAPPE  
JANUARY 29, 1991  
ROBERT G. PAPPE  
2483

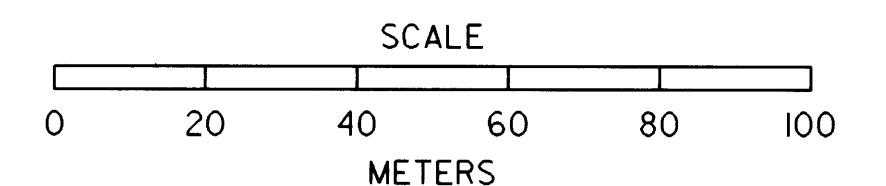
EXPIRES 12-31-98

ROBERT G. PAPPE P.L.S.  
Oregon Department of Transportation  
3500 N.W. Stewart Parkway  
Roseburg, Oregon 97470

SURVEY COMPLETED 11 JUNE, 1997

### LEGEND

- △ SET MONUMENT
- FOUND MONUMENT



Scale 1:1000

PAGE 1 OF 2