

SURVEY NARRATIVE

SURVEY FOR: OREGON DEPARTMENT OF TRANSPORTATION
3500 STEWART PARKWAY, SUITE 140
ROSEBURG, OR. 97470

LOCATION: IN THE SE 1/4 OF SECTION 22, IN THE SW 1/4 OF SECTION 23,
IN THE NE 1/4, SW 1/4 AND SE 1/4 OF SECTION 25,
IN THE NE 1/4 OF SECTION 26, AND IN THE NE 1/4 OF SECTION 27, T. 28 S,
R. 7 W, W.M.

PURPOSE: TO MONUMENT RIGHT-OF-WAY CHANGES ALONG HIGHWAY 42 (COOS BAY -
ROSEBURG HIGHWAY) AS A RESULT OF THE RECENTLY COMPLETED HIGHWAY
CONSTRUCTION PROJECT.

PROCEDURE: RIGHT-OF-WAY MONUMENTATION WAS SET AFTER THE COMPLETION OF THE
CONSTRUCTION PROJECT "OLALLA CREEK TO HOOVER HILL ROAD" USING THE
HORIZONTAL CONTROL SET DURING THE LOCATION PHASE OF THE PROJECT (SEE
MAP M119-63A, NARRATIVE C.S. 63/164-1 FILED AT THE DOUGLAS COUNTY
SURVEYOR'S OFFICE). MONUMENTS SET WERE 30-INCH LONG, 3/8" REBAR
WITH 1-1/4" DIAMETER YELLOW PLASTIC CAPS STAMPED "O.S.H.D. R/W"
ACCOMPANIED BY OSHD PADDLES SET ACCORDING TO R/W MAP 10B-8-II.
FOR PREVIOUS RIGHT OF WAY SEE R/W MAPS 6B-28-15 AND 10C-54-2. FIELD
WORK WAS COMPLETED IN NOVEMBER 1996. PROJECT STATIONING REFERS TO
ENGINEERS CENTERLINE.

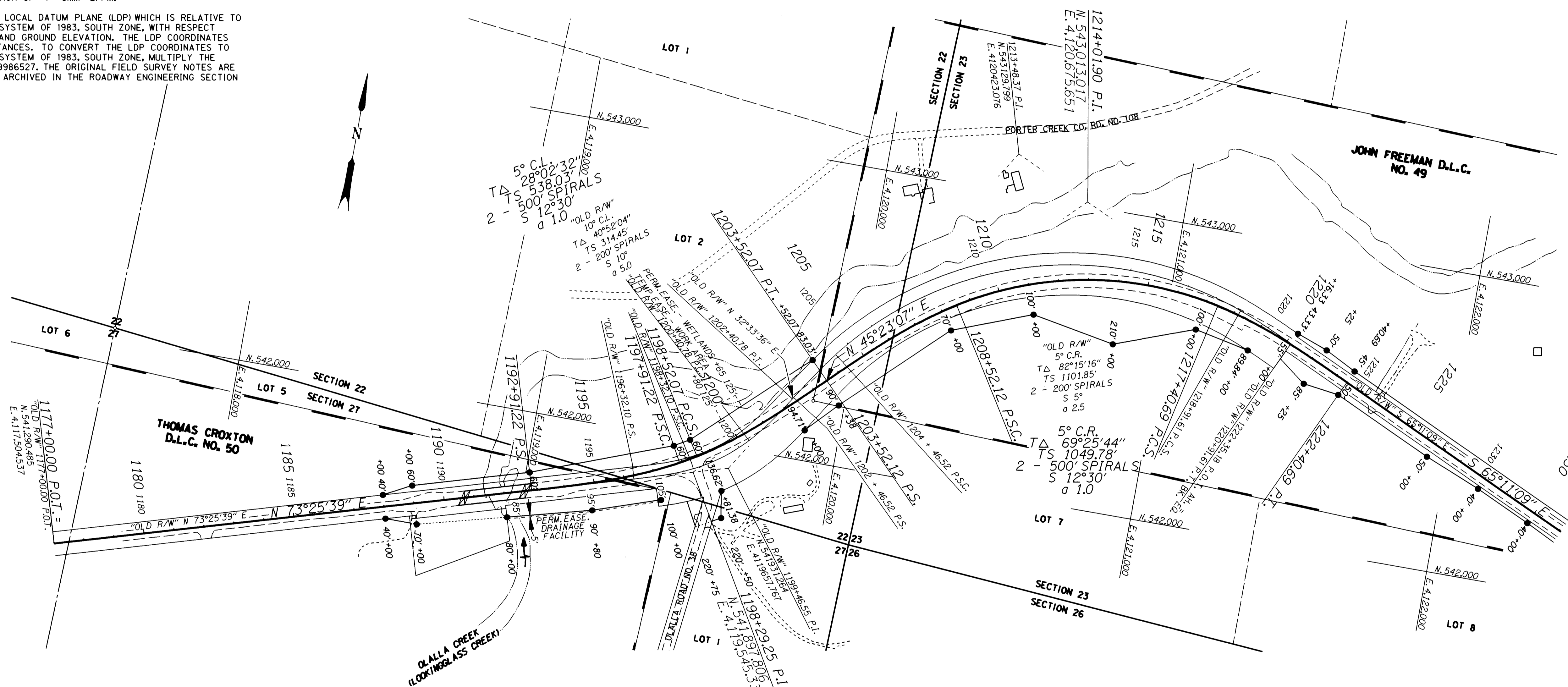
EQUIPMENT: A LEICA T1610 ELECTRONIC THEODOLITE WITH A D11600 DISTANCE METER
WAS USED TO SET THE R/W MONUMENTS. THE T1610 THEODOLITE HAS
A STANDARD ANGULAR ERROR OF +/- 1.5 SECONDS, AND THE D11600 HAS
A STANDARD DISTANCE ERROR OF +/- 3MM- 2PPM.

HORIZONTAL DATUM: THIS DRAWING UTILIZES A LOCAL DATUM PLANE (LDP) WHICH IS RELATIVE TO
THE OREGON COORDINATE SYSTEM OF 1983, SOUTH ZONE, WITH RESPECT
TO THE LOCAL LATITUDE AND GROUND ELEVATION. THE LDP COORDINATES
DEFINE TRUE GROUND DISTANCES. TO CONVERT THE LDP COORDINATES TO
THE OREGON COORDINATE SYSTEM OF 1983, SOUTH ZONE, MULTIPLY THE
LDP COORDINATES BY 0.99986527. THE ORIGINAL FIELD SURVEY NOTES ARE
CONTAINED IN BOOK 3393, ARCHIVED IN THE ROADWAY ENGINEERING SECTION
IN SALEM, OR.

RIGHT OF WAY MONUMENTATION MAP

BY THE OREGON DEPARTMENT OF TRANSPORTATION
FOR OLALLA CREEK BRIDGE TO HOOVER HILL ROAD SECTION
COOS BAY - ROSEBURG HIGHWAY #42
DOUGLAS COUNTY
(PAGE 1 OF 2)

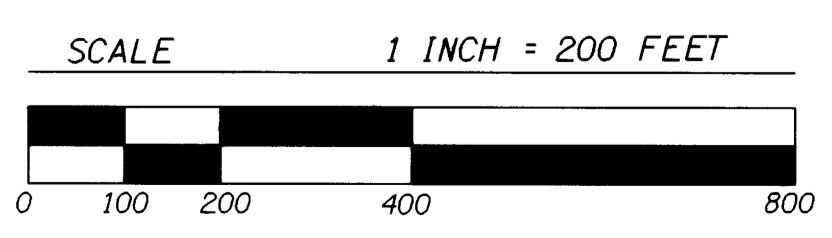
FILED
Date: 10-19-1998 By: JP
This survey consists of: 2 Pgs
Map: M129-18A
Narrative:
Corner Rpt:
SC DOUGLAS COUNTY SURVEYOR



LEGEND

- NEW CONST. & R/W E
- OLD R/W LINE
- NEW R/W LINE
- - - EASEMENT LINE
- R/W MONUMENT SET

REGISTERED PROFESSIONAL LAND SURVEYOR
Robert G. Pappe
ROBERT G. PAPPE
2483
EXPIRES DEC. 31, 1998



OREGON DEPARTMENT OF TRANSPORTATION
RIGHT OF WAY MONUMENTATION MAP
COOS BAY-ROSEBURG HIGHWAY
DOUGLAS COUNTY
ADDRESS - 3500 STEWART PARKWAY, SUITE 140
ROSEBURG, OREGON 97470
CADD FILE: 06930RWM.DGN